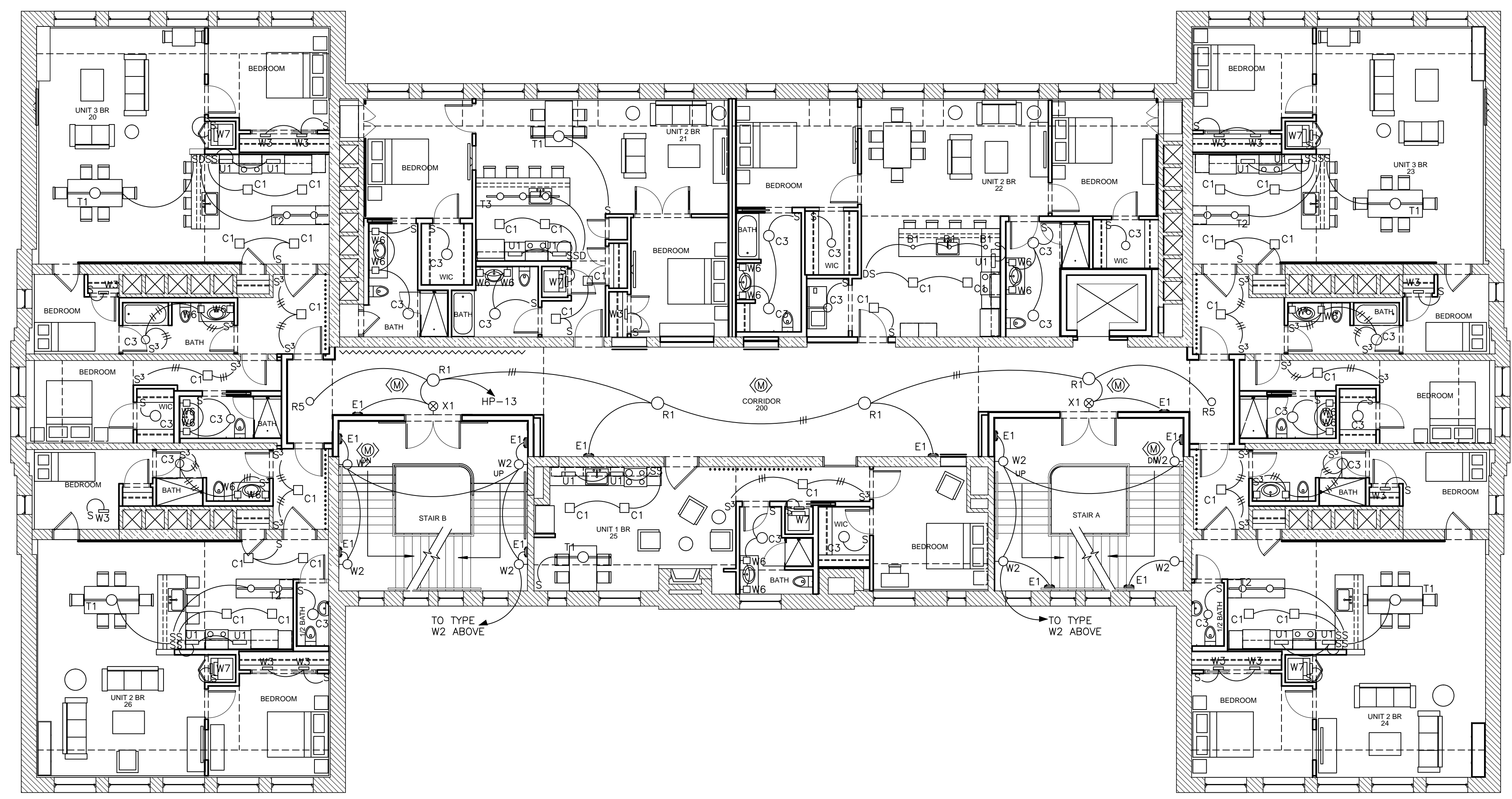
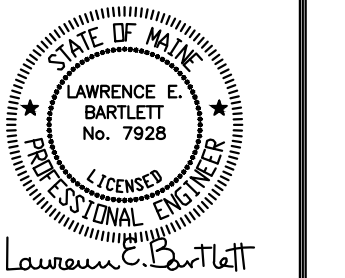


2 | SECOND FLOOR - ELECTRICAL PLAN
 1/8" = 1'-0"
 0 2' 4' 8' 16'



1 | SECOND FLOOR - LIGHTING PLAN
 1/8" = 1'-0"
 0 2' 4' 8' 16'



Prepared For:
Developers Collaborative

Consultant:
Bartlett Design
 48 UNION WHARF STREET, PORTLAND, MAINE 04101
 TEL: (207) 443-3447 FAX: (207) 443-0600

Architect:
NATHAN CLIFFORD SCHOOL REDEVELOPMENT
 80 FAIRMOUTH STREET, PORTLAND, MAINE 04101
 (207) 772-6022 ARCHTYPE@ARCHTYPEPA.COM

Project:
NATHAN CLIFFORD SCHOOL REDEVELOPMENT
 80 FAIRMOUTH STREET, PORTLAND, MAINE 04101

Revisions:

Date: 15 JAN 2013
 Scale: 1/8" = 1'-0"
SECOND FLOOR LIGHTING & ELECTRICAL PLANS

E1.03