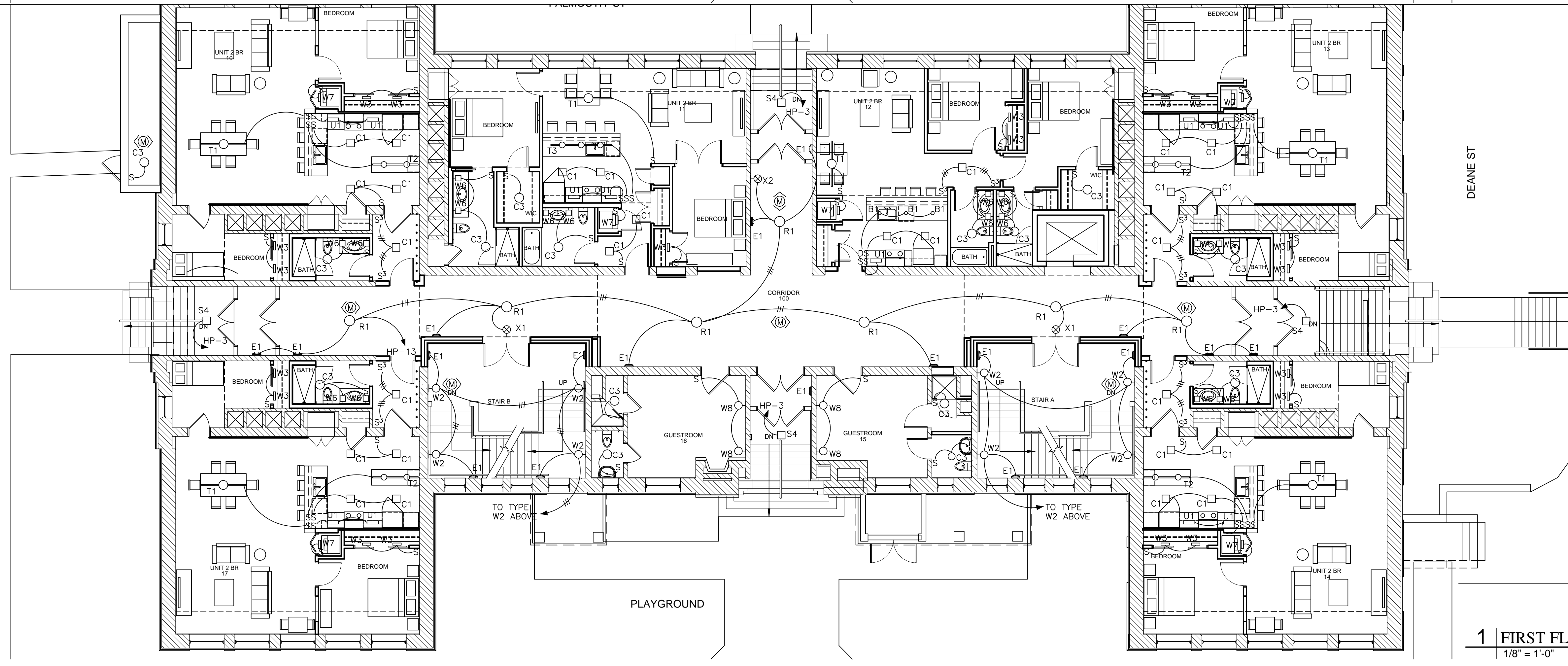
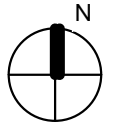
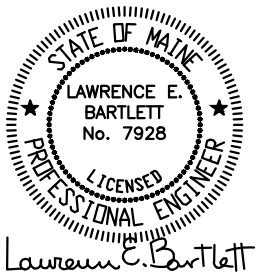
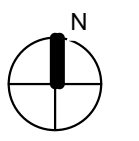


2 | FIRST FLOOR - ELECTRICAL PLAN  
1/8" = 1'-0"



1 | FIRST FLOOR - LIGHTING PLAN  
1/8" = 1'-0"



Developers  
Collaborative

Consultant:  
**Bartlett Design**  
148 COLLEGE STREET  
PORTLAND, MAINE 04101  
TEL: (207) 445-3447  
FAX: (207) 445-0600

Architect:  
**NATHAN CLIFFORD**  
48 Union Wharf Portland, Maine 04101  
(207) 772-6022 ARCHTYPE@ARCHTYPEPA.COM

Project:  
**NATHAN CLIFFORD**  
**SCHOOL**  
**REDEVELOPMENT**  
80 Falmouth Street Portland, Maine

Revisions:

Date: 18 DEC 2013  
Scale: 1/8" = 1'-0"  
**FIRST FLOOR**  
**LIGHTING &**  
**ELECTRICAL PLANS**

**E1.02**