

Developers
Collaborative

Prepared For:
Bartlett Design
148 UNION WHARF STREET
PORTLAND, MAINE 04101
TEL: (207) 442-3447 FAX: (207) 442-3447

Consultant:
Architect:
48 Union Wharf Portland, Maine 04101
(207) 772-6022 ARCHTYPE@ARCHTYPEPA.COM

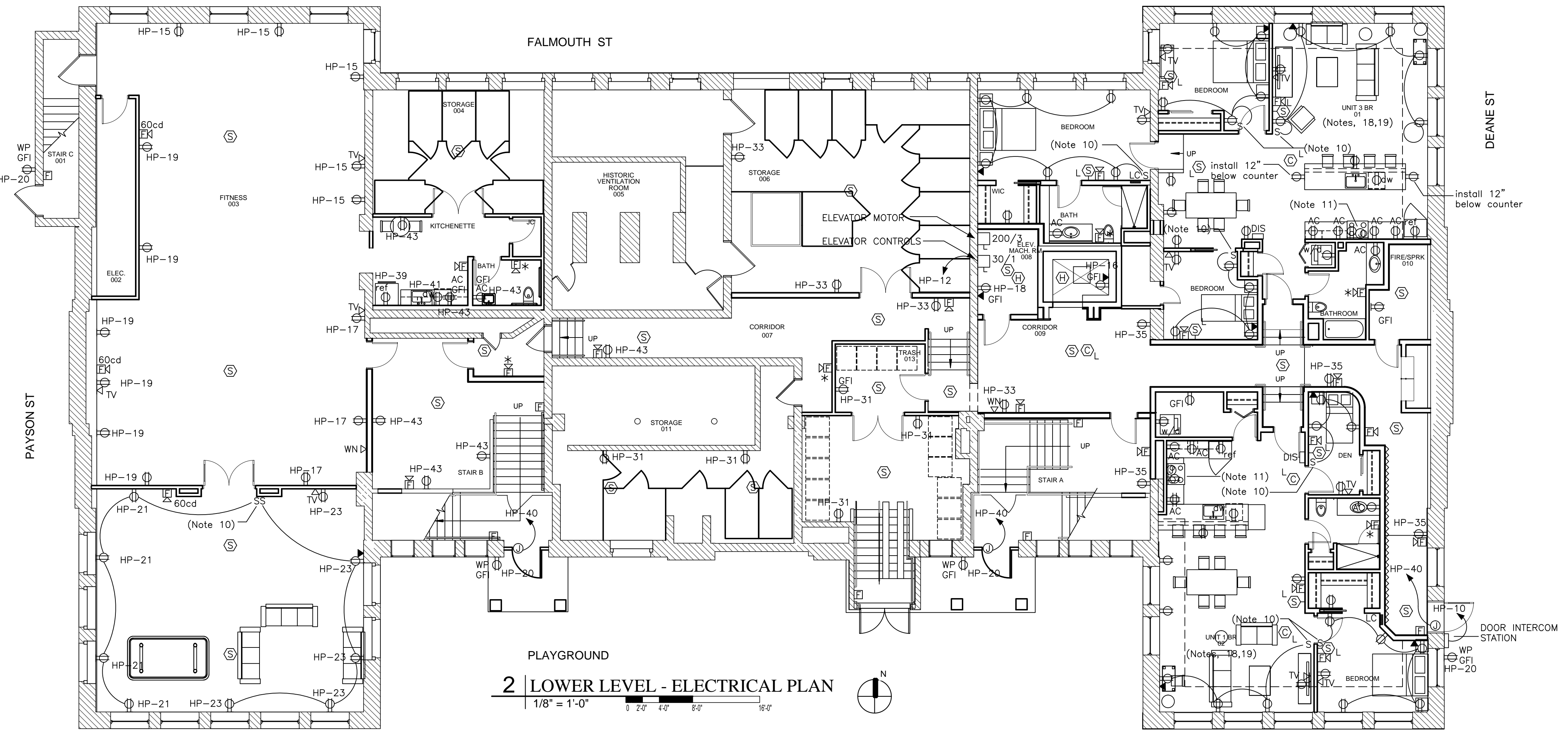
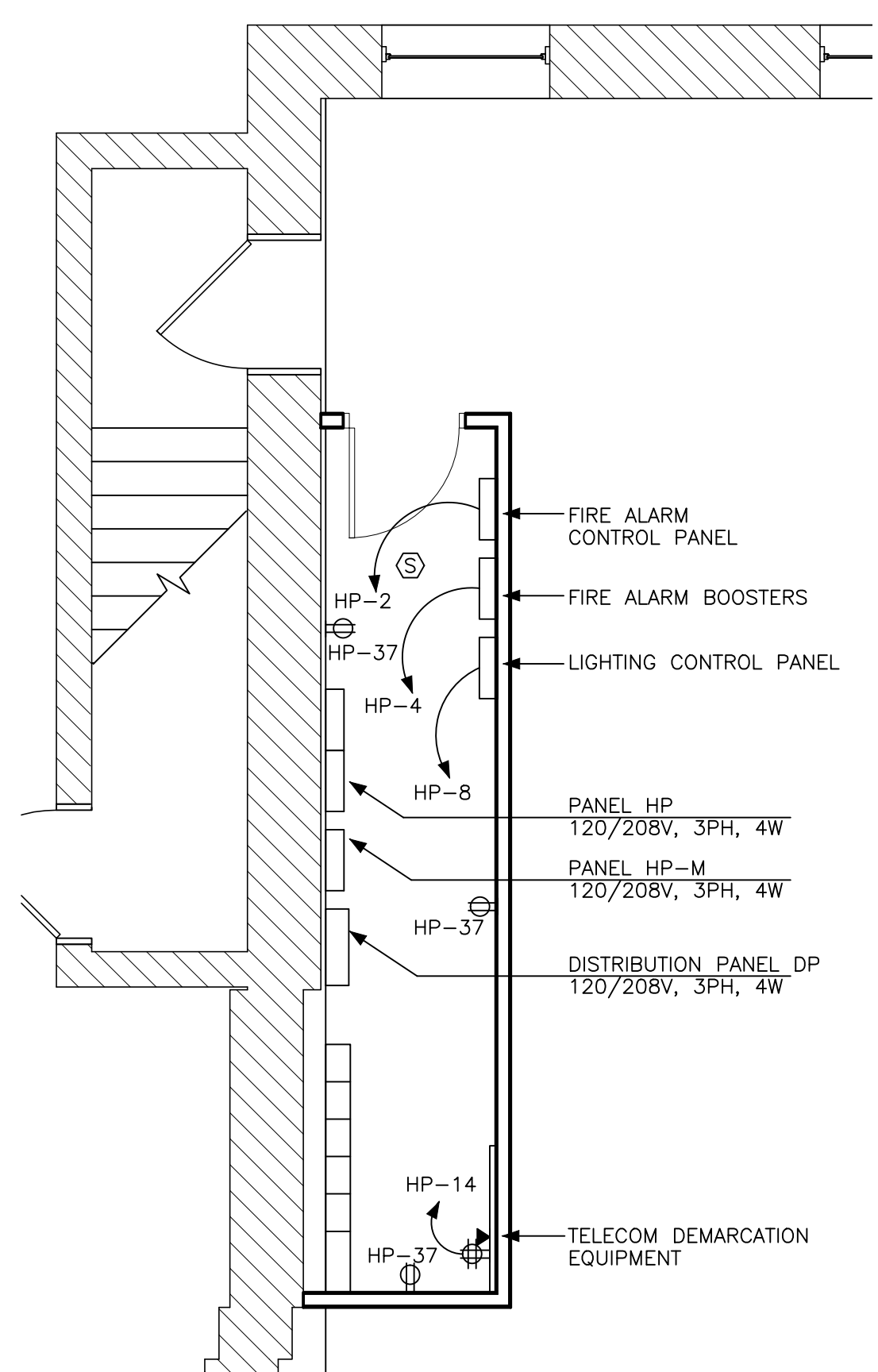
Project:
**NATHAN CLIFFORD
SCHOOL
REDEVELOPMENT**
80 Falmouth Street Portland, Maine

Revisions:

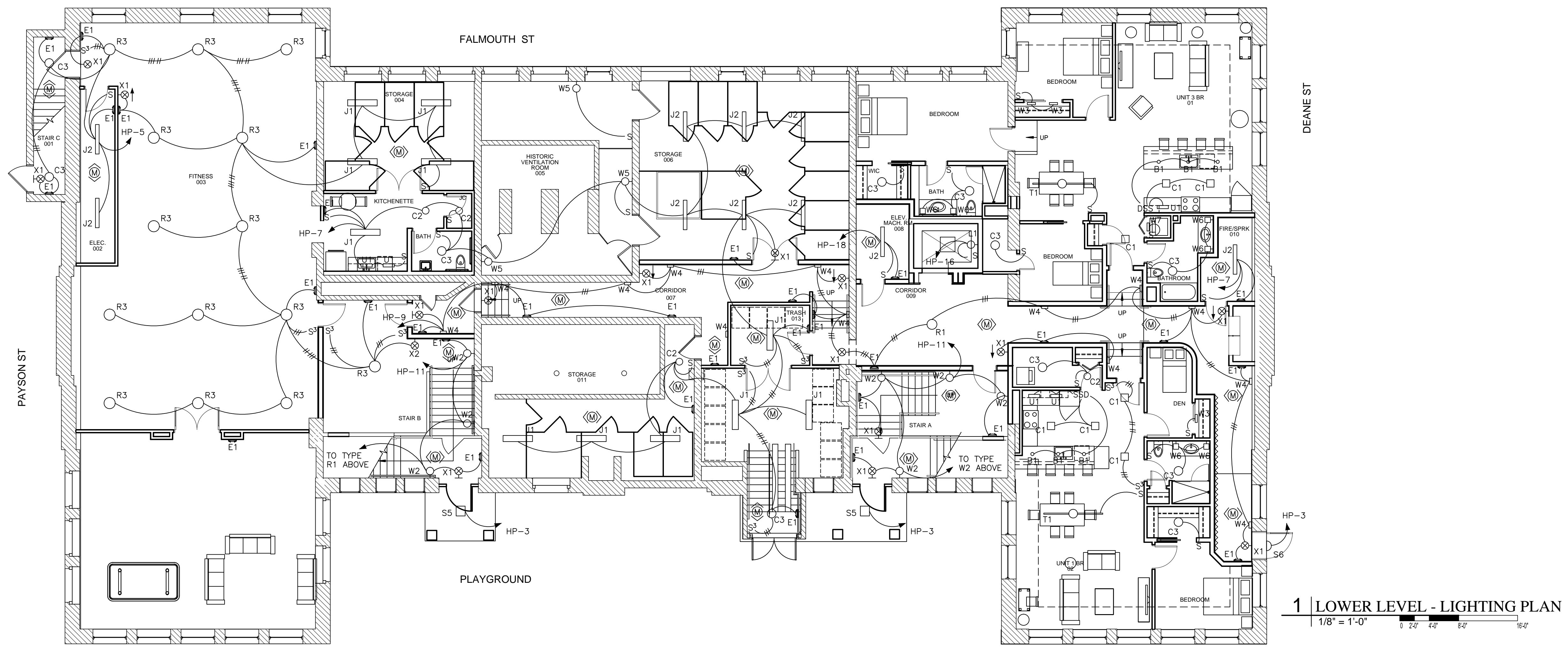
Date: 18 DEC 2013
Scale: 1/8" = 1'-0"
**LOWER LEVEL
LIGHTING &
ELECTRICAL PLANS**

E1.01

3 ELECTRICAL 002
1/4" = 1'-0"



2 LOWER LEVEL - ELECTRICAL PLAN
1/8" = 1'-0"



1 LOWER LEVEL - LIGHTING PLAN
1/8" = 1'-0"