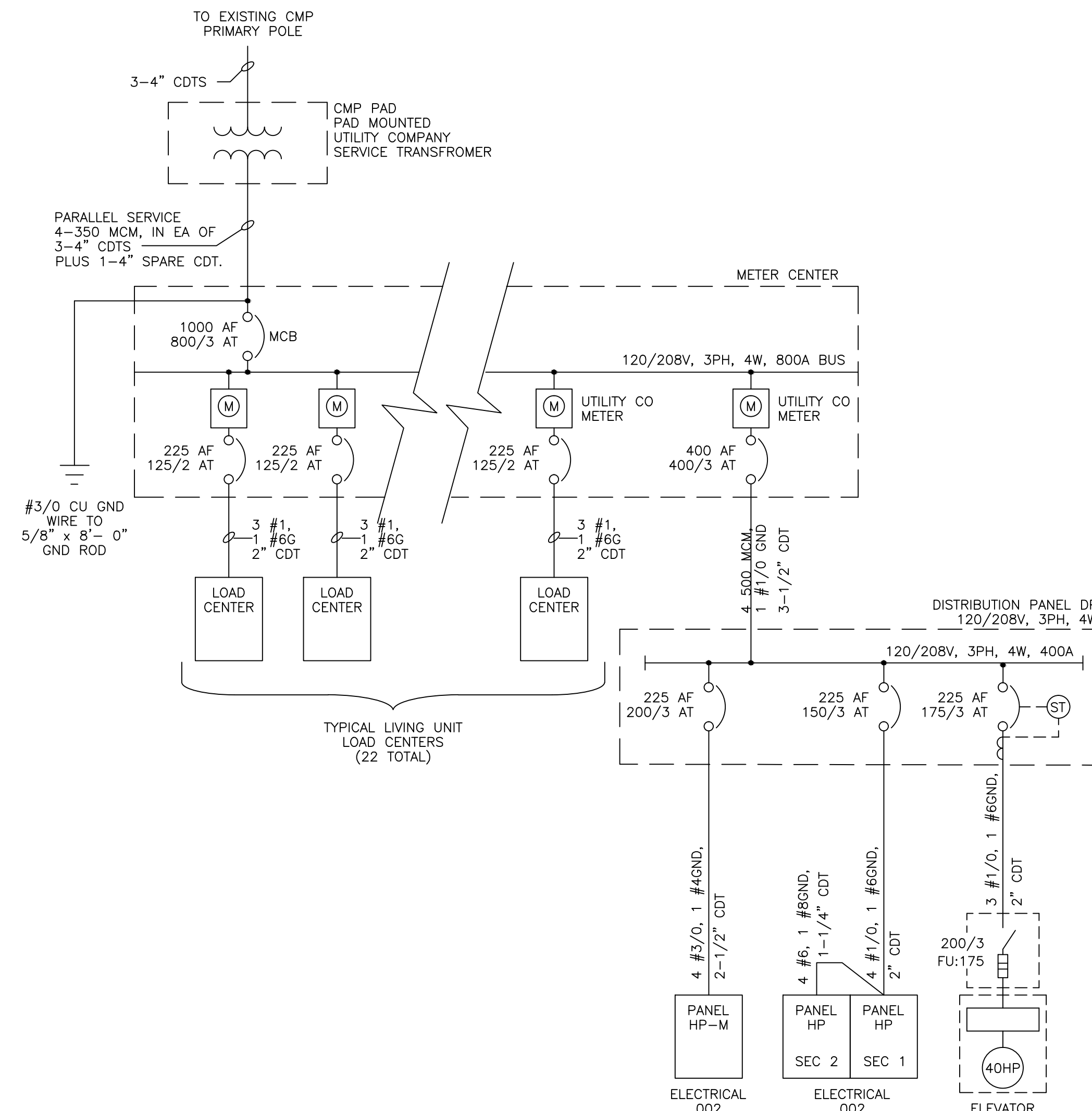
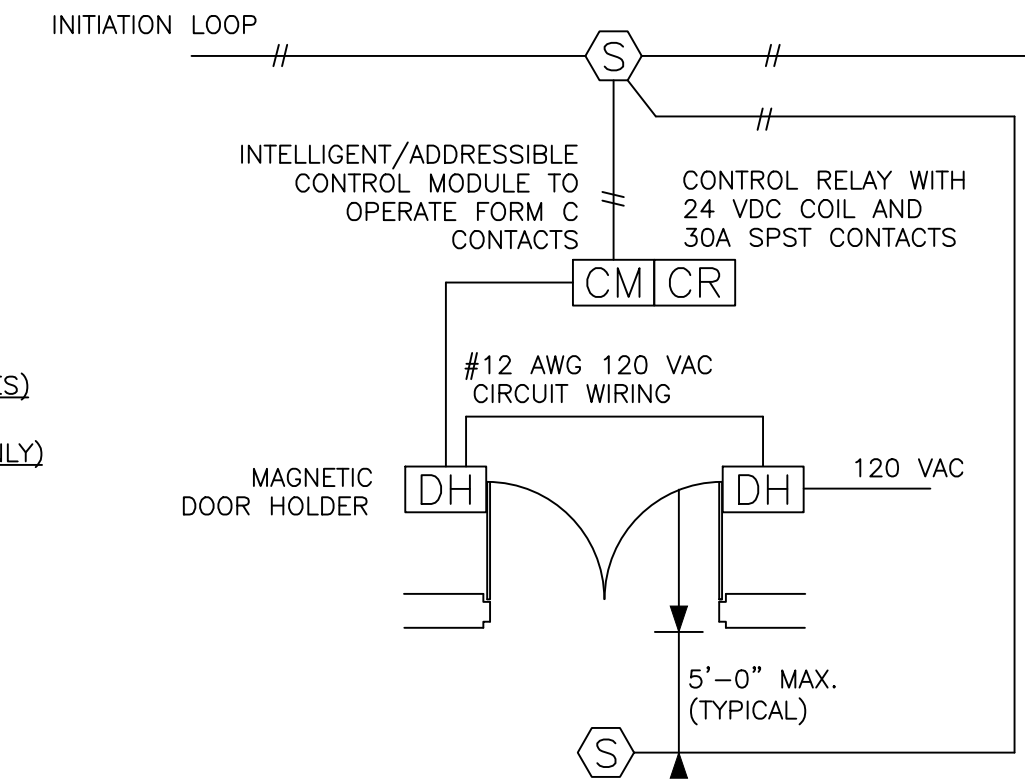


2 | MODULAR METER CENTER DETAIL
No Scale

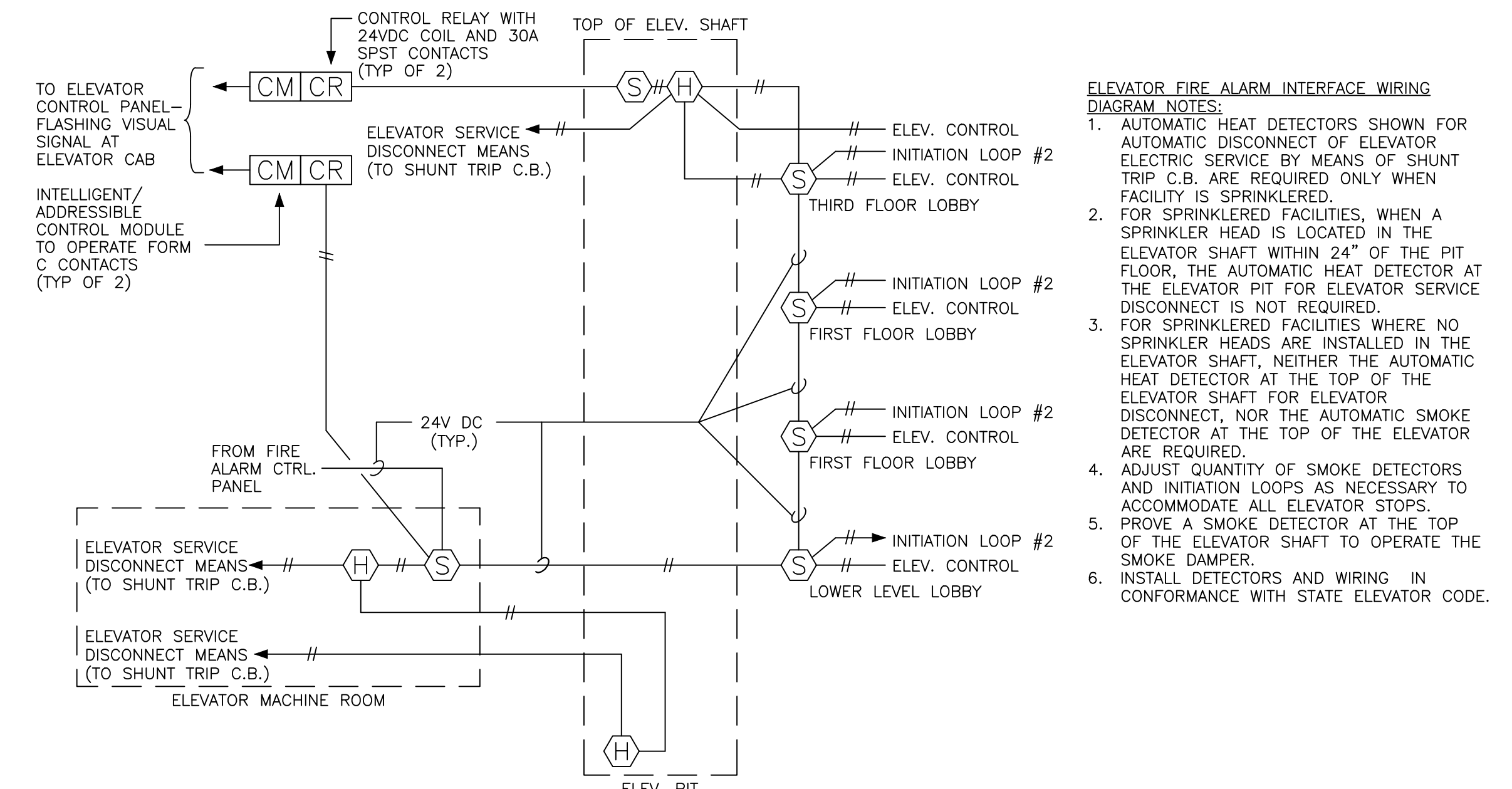


1 | SINGLE LINE DIAGRAM
No Scale

DOOR HEAD HT. EQUALS 24" (OR LESS BOTH SIDES)
PROVIDE DETECTOR ON CEILING ONE SIDE ONLY
DOOR HEAD HT. GREATER THAN 24" (ONE SIDE ONLY)
PROVIDE DETECTOR ON CEILING ON SIDE WITH
HEAD HEIGHT GREATER THAN 24" ONLY
DOOR HEAD HT. GREATER THAN 24" (BOTH SIDES)
PROVIDE DETECTORS ON CEILING BOTH SIDES

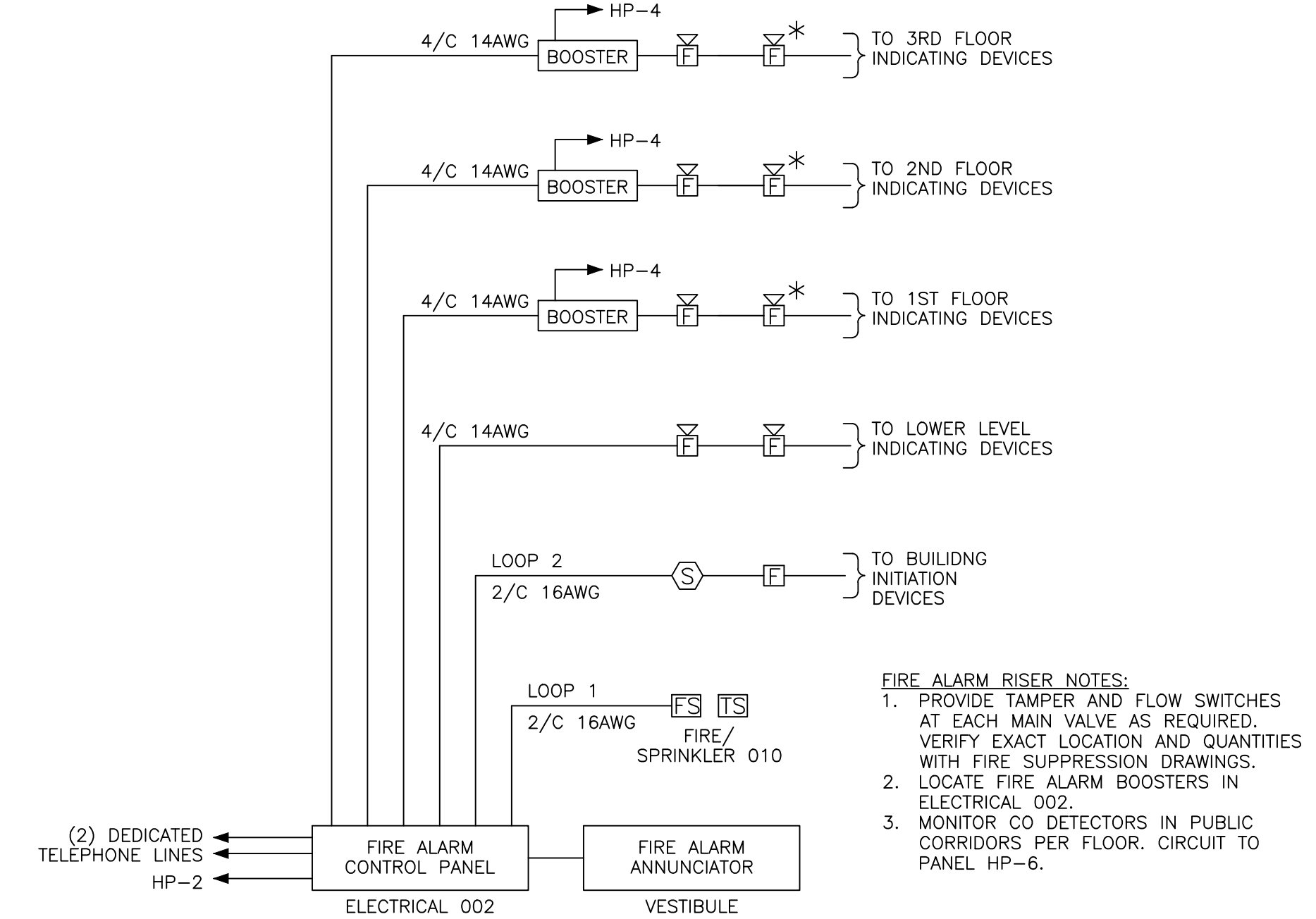


2 | DOOR HOLDER FIRE ALARM INTERFACE WIRING DIAGRAM
No Scale



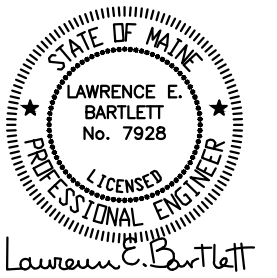
- ELEVATOR FIRE ALARM INTERFACE WIRING DIAGRAM NOTES:**
1. AUTOMATIC HEAT DETECTORS SHOWN FOR AUTOMATIC DISCONNECT OF ELEVATOR ELECTRIC SERVICE BY MEANS OF SHUNT TRIP C.B. ARE REQUIRED ONLY WHEN FACILITY IS SPRINKLERED.
 2. FOR SPRINKLERED FACILITIES, WHEN A SPRINKLER HEAD IS LOCATED IN THE ELEVATOR SHAFT WITHIN 24" OF THE PIT FLOOR, THE AUTOMATIC HEAT DETECTOR AT THE ELEVATOR PIT FOR ELEVATOR SERVICE DISCONNECT IS NOT REQUIRED.
 3. FOR SPRINKLERED FACILITIES WHERE NO SPRINKLER HEADS ARE INSTALLED IN THE ELEVATOR SHAFT, NEITHER THE AUTOMATIC HEAT DETECTOR AT THE TOP OF THE ELEVATOR SHAFT FOR ELEVATOR SERVICE DISCONNECT, NOR THE AUTOMATIC SMOKE DETECTOR AT THE TOP OF THE ELEVATOR ARE REQUIRED.
 4. ADJUST QUANTITY OF SMOKE DETECTORS AND INITIATION LOOPS AS NECESSARY TO ACCOMMODATE ALL ELEVATOR STOPS.
 5. PROVE A SMOKE DETECTOR AT THE TOP OF THE ELEVATOR SHAFT TO OPERATE THE SMOKE DAMPER.
 6. INSTALL DETECTORS AND WIRING IN CONFORMANCE WITH STATE ELEVATOR CODE.

2 | ELEVATOR RECALL FIRE ALARM WIRING INTERFACE DIAGRAM
No Scale



- FIRE ALARM RISER NOTES:**
1. PROVIDE TAMPER AND FLOW SWITCHES AT EACH MAIN VALVE AS REQUIRED. VERIFY EXACT LOCATION AND QUANTITIES WITH FIRE SUPPRESSION DRAWINGS.
 2. LOCATE FIRE ALARM BOOSTERS IN ELECTRICAL 002.
 3. MONITOR CO DETECTORS IN PUBLIC CORRIDORS PER FLOOR. CIRCUIT TO PANEL HP-6.

2 | FIRE ALARM RISER DIAGRAM
No Scale



Developers
Collaborative

Prepared For:
Bartlett Design
1000 Commercial Street
Portland, ME 04101
TEL: (207) 443-3447 FAX: (207) 443-0600

Consultant:
48 Union Wharf Portland, Maine 04101
(207) 772-4022 ARCHTYPE@ARCHTYPEPA.COM

Project:
NATHAN CLIFFORD SCHOOL REDEVELOPMENT
80 Fulmouth Street Portland, Maine

Revisions:

Date: 18 DEC 2013
Scale: AS NOTED
ELECTRICAL DETAILS

E0.02