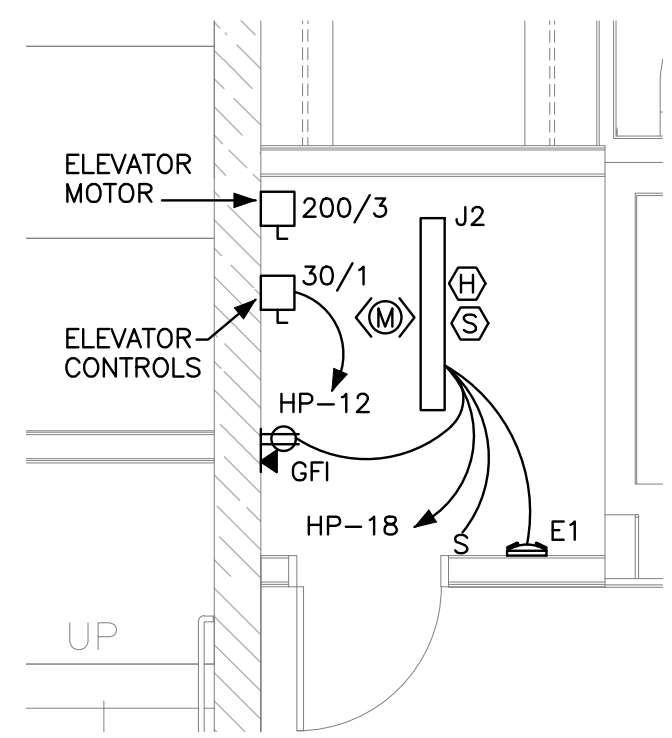
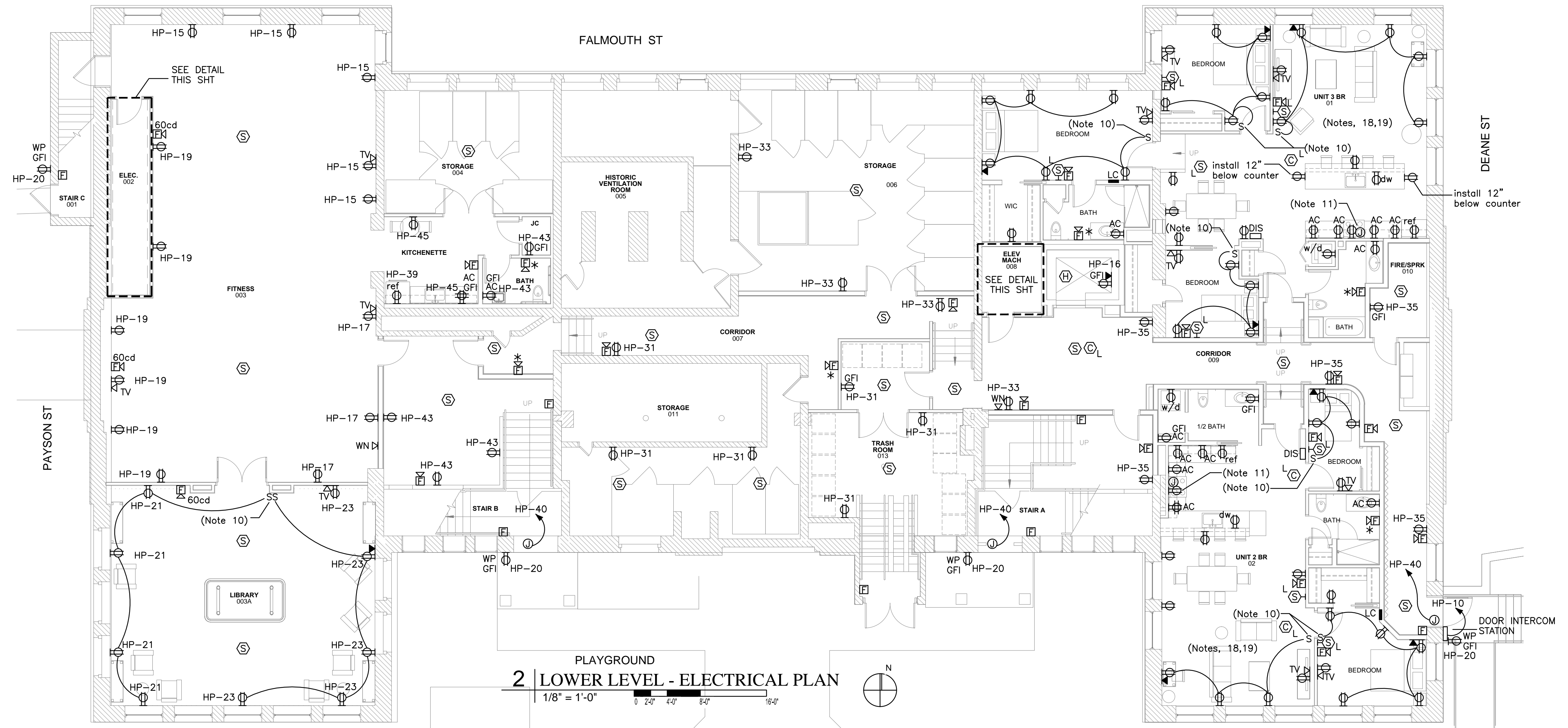


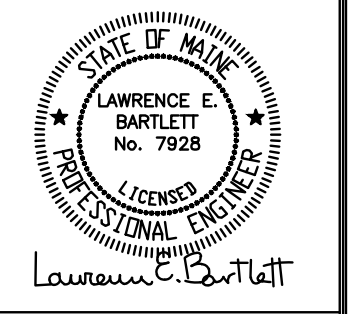
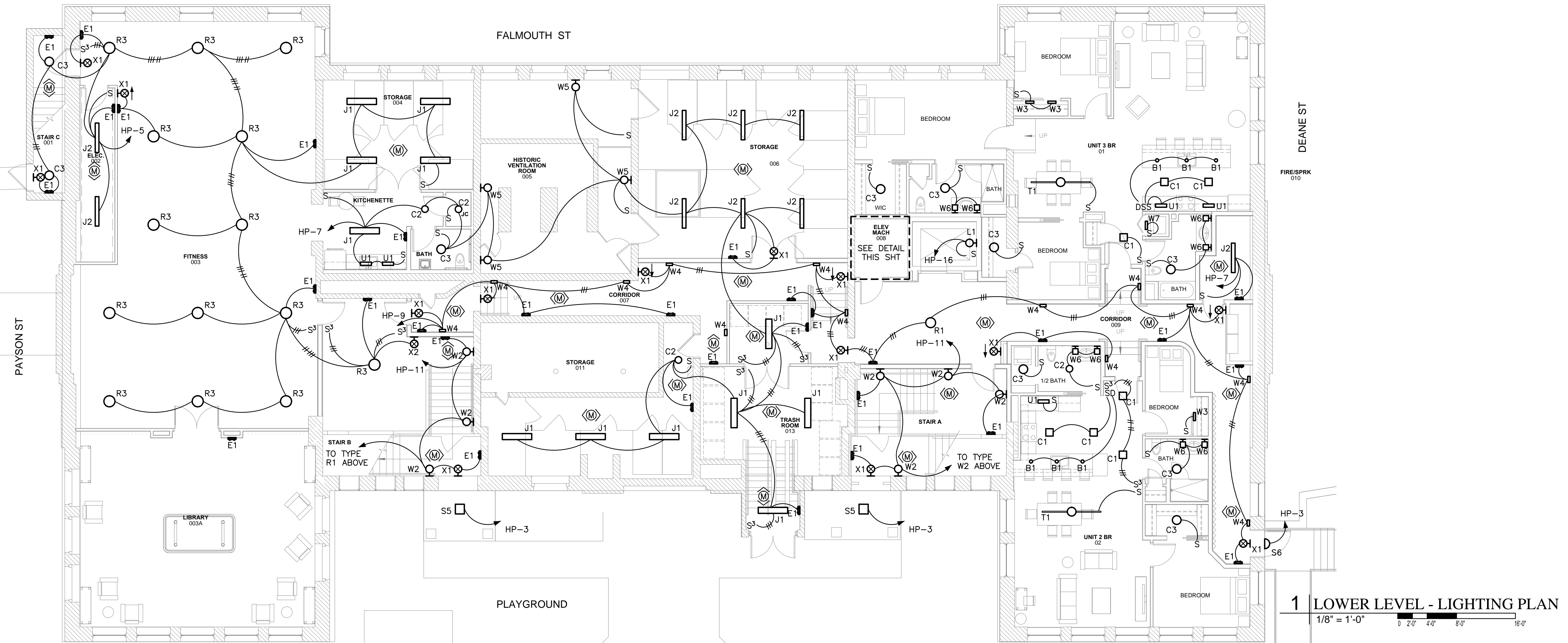
3 ELECTRICAL 002

1/4" = 1'-0"



4 ELEV MACH RM 008

1/4" = 1'-0"



Prepared For:
Developers Collaborative

Consultant:
Bartlett Design
LIGHTING & ELECTRICAL ENGINEERING
48 Union Wharf Portland, Maine 04101
TEL: (207) 443-3447 FAX: (207) 443-5800

Architect:
ARCHETYPE architects
48 Union Wharf Portland, Maine 04101
(207) 772-6022 ARCHETYPE@ARCHETYPEPA.COM

Project:
NATHAN CLIFFORD SCHOOL REDEVELOPMENT
80 Falmouth Street Portland, Maine

Revisions:

Date: 15 JAN 2013
Scale: 1/8" = 1'-0"
LOWER LEVEL LIGHTING & ELECTRICAL PLANS

E1.01