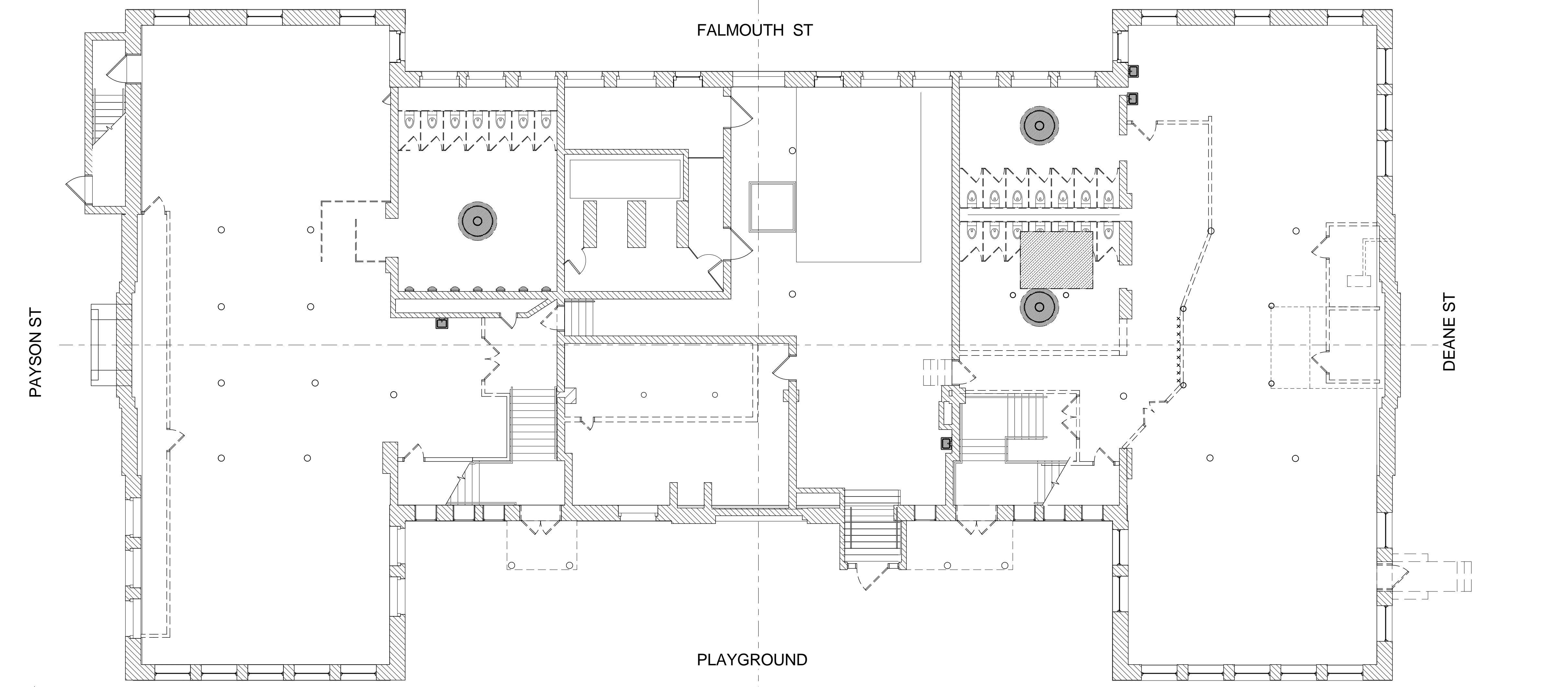


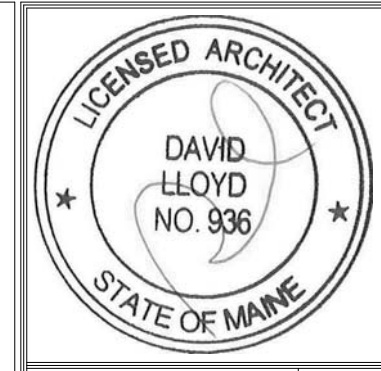
2 FIRST FLOOR PLASTER CONDITIONS PLAN
1/8" = 1'-0"



1 LOWER LEVEL PLASTER CONDITIONS PLAN
1/8" = 1'-0"

PLASTER REPAIR NOTES:
 PLASTER PLANS ARE PROVIDED TO ESTABLISH THE AREAS OF REPAIR.
 ALL PLASTER (HORIZ. OR VERTICAL) LEFT EXPOSED TO FINISHED SPACES AT THE COMPLETION OF WORK IS TO BE TREATED AS NECESSARY TO RECEIVE NEW FINISHES. SEE FINISH SCHEDULE FOR PROJECT FINISHES.
 REMOVE ALL CLASSROOM FF&E AND REPAIR PLASTER TO RECEIVE NEW FINISHES.
 SEE DEMO PLANS FOR EXTENT OF COATHOOKS AND CHALKBOARDS TO BE REMOVED.
 REPAIR PLASTER AT ALL BLEMISHES DOCUMENTED IN PLASTER PLANS.

EXISTING PLASTER BLEMISH LEGEND	
1	HOLE IN PLASTER - SEE PLAN FOR DIAMETER
2	CRACK IN PLASTER - SEE PLAN FOR LENGTH
3	DAMAGED PLASTER - SEE PLAN FOR SIZE



Prepared For:
Developers Collaborative
 17 Chestnut Street
 Portland, ME 04101

Consultant:
ARCHETYPE architects
 48 Union Wharf Portland, Maine 04101
 (207) 772-6022 ARCHETYPE@ARCHETYPEPA.COM

Project:
NATHAN CLIFFORD SCHOOL REDEVELOPMENT
 180 Falmouth Street Portland, Maine

Revisions:

Date: 15 JAN 2014
 Scale: 1/8" = 1'-0"
PLASTER CONDITIONS

A4.06