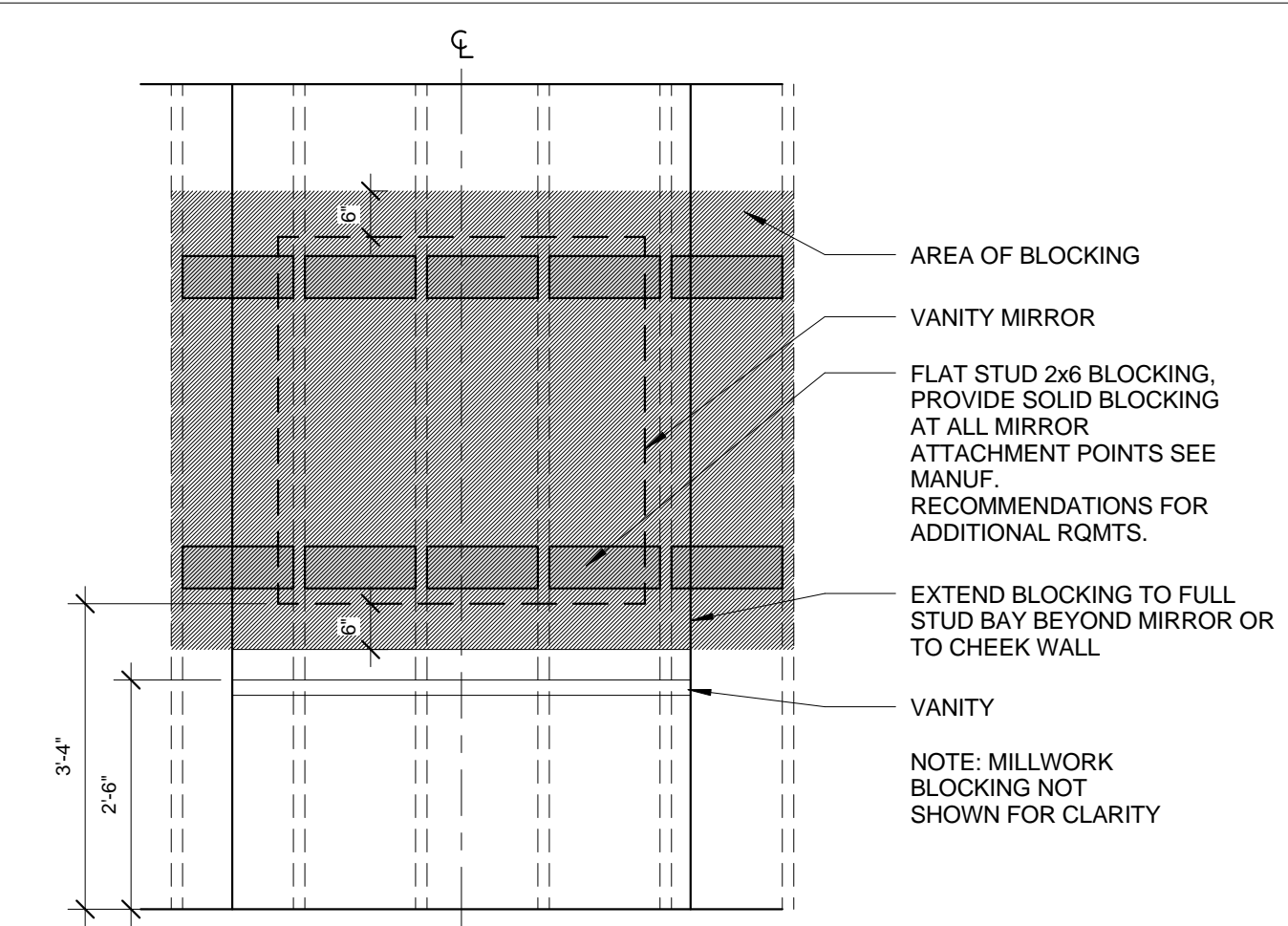


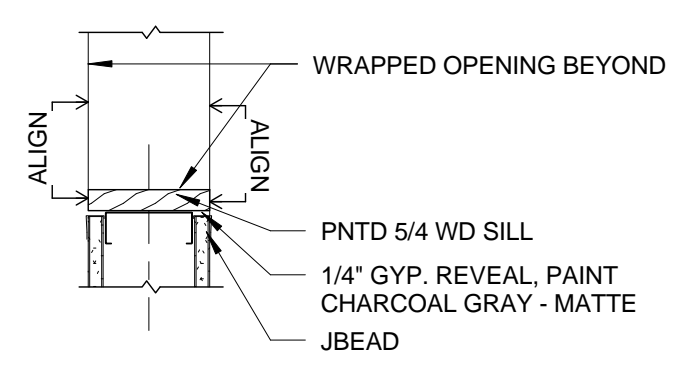
8 | CORRIDOR SECTION AT EAST ENTRY STAIR

1/4" = 1'-0" 0 1'-0" 2'-0" 4'-0" 8'-0"



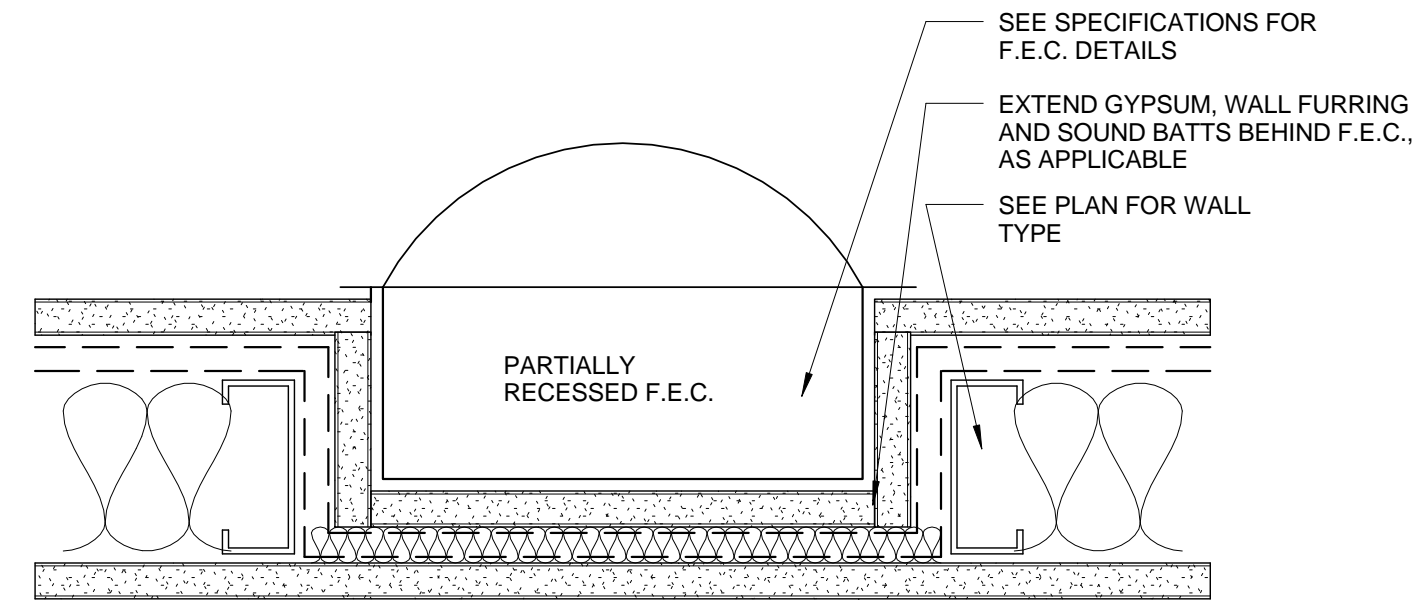
4 | BLOCKING DETAIL - VANITY MIRROR

1/2" = 1'-0" 0 1'-0" 2'-0" 4'-0"



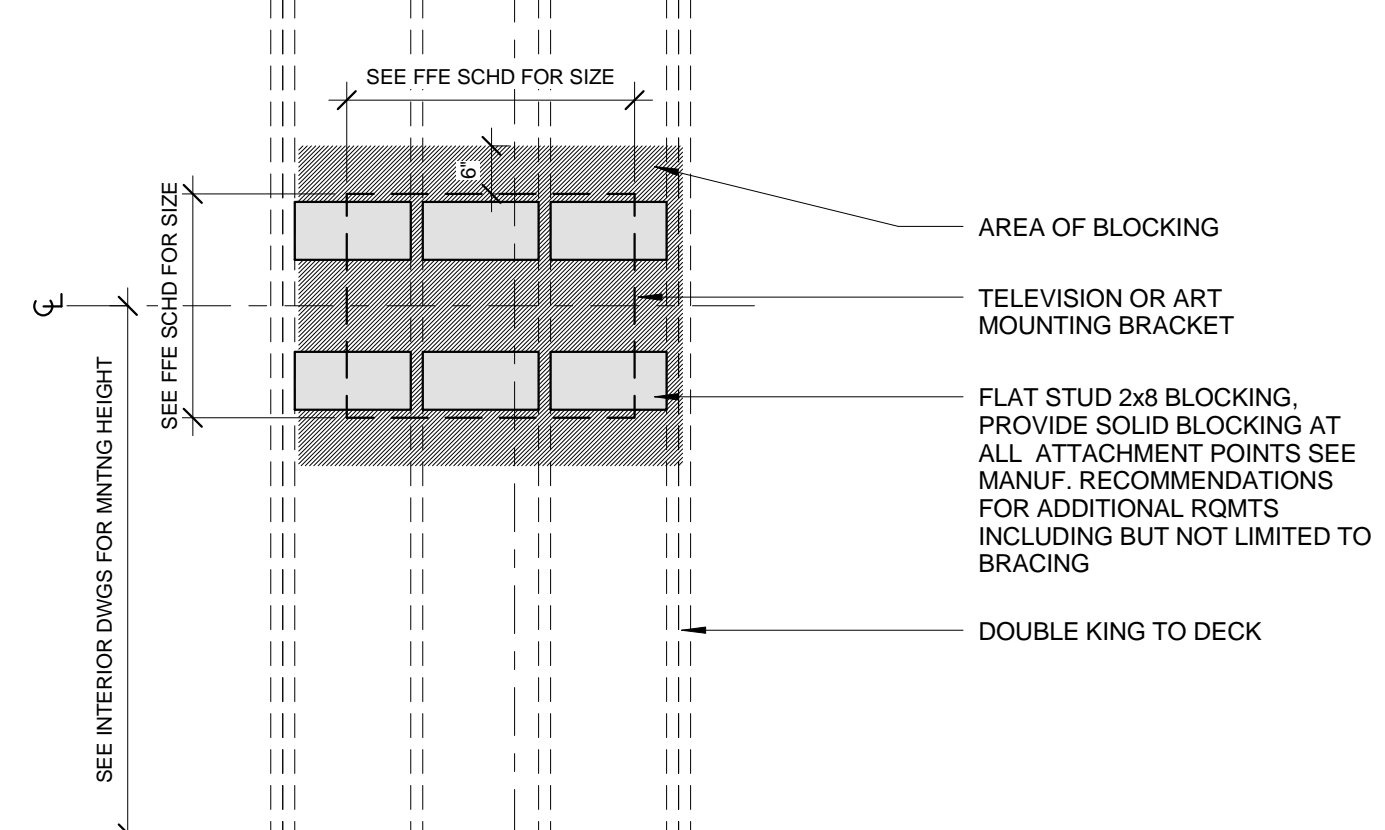
11 | PUNCHED OPENING SILL DETAIL

1 1/2" = 1'-0" 0 3' 6' 1'-0" 2'-0"



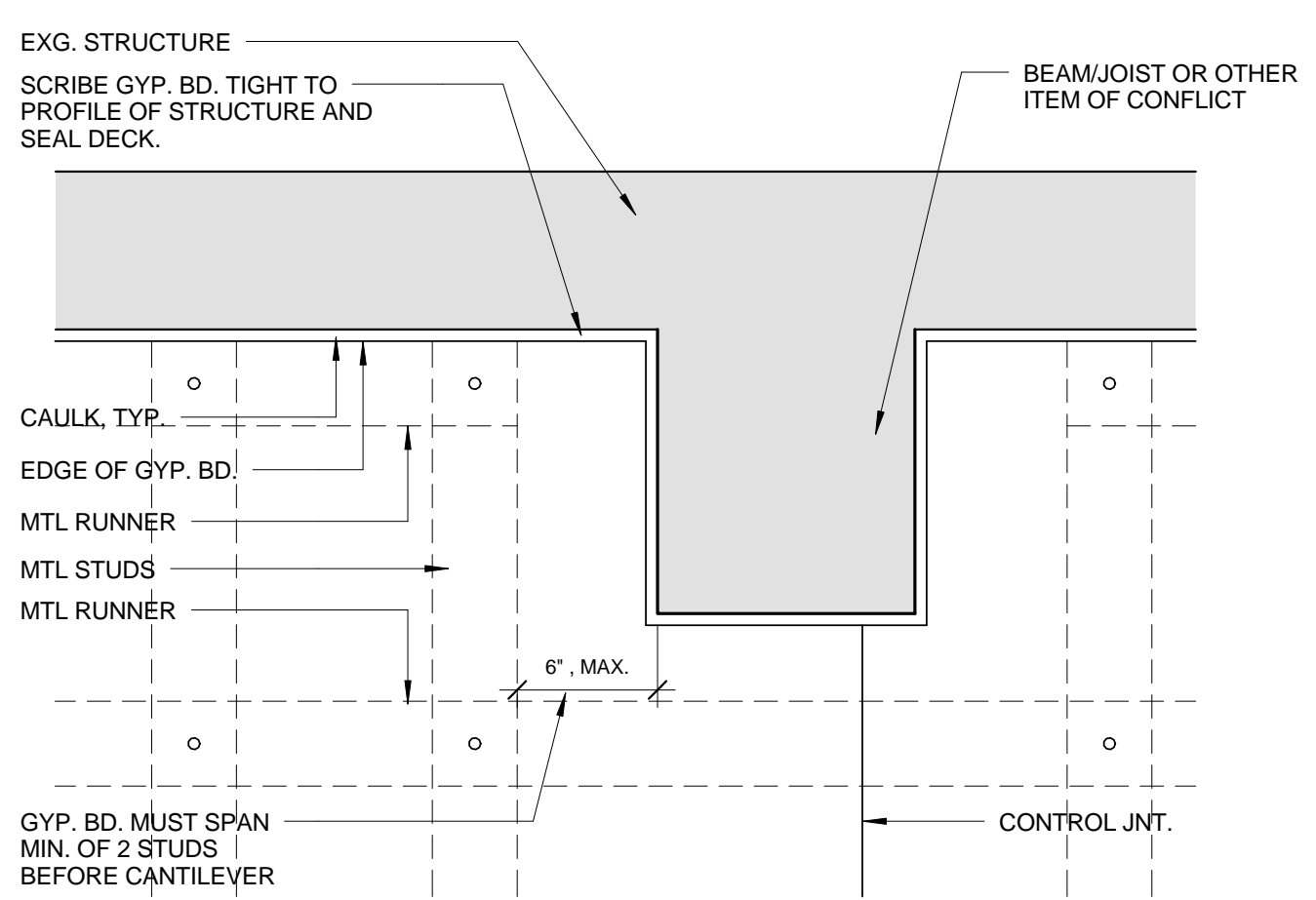
7 | RECESSED F.E.C. CABINET DETAIL

3" = 1'-0" 0 1'-0" 3' 6' 1'-0"



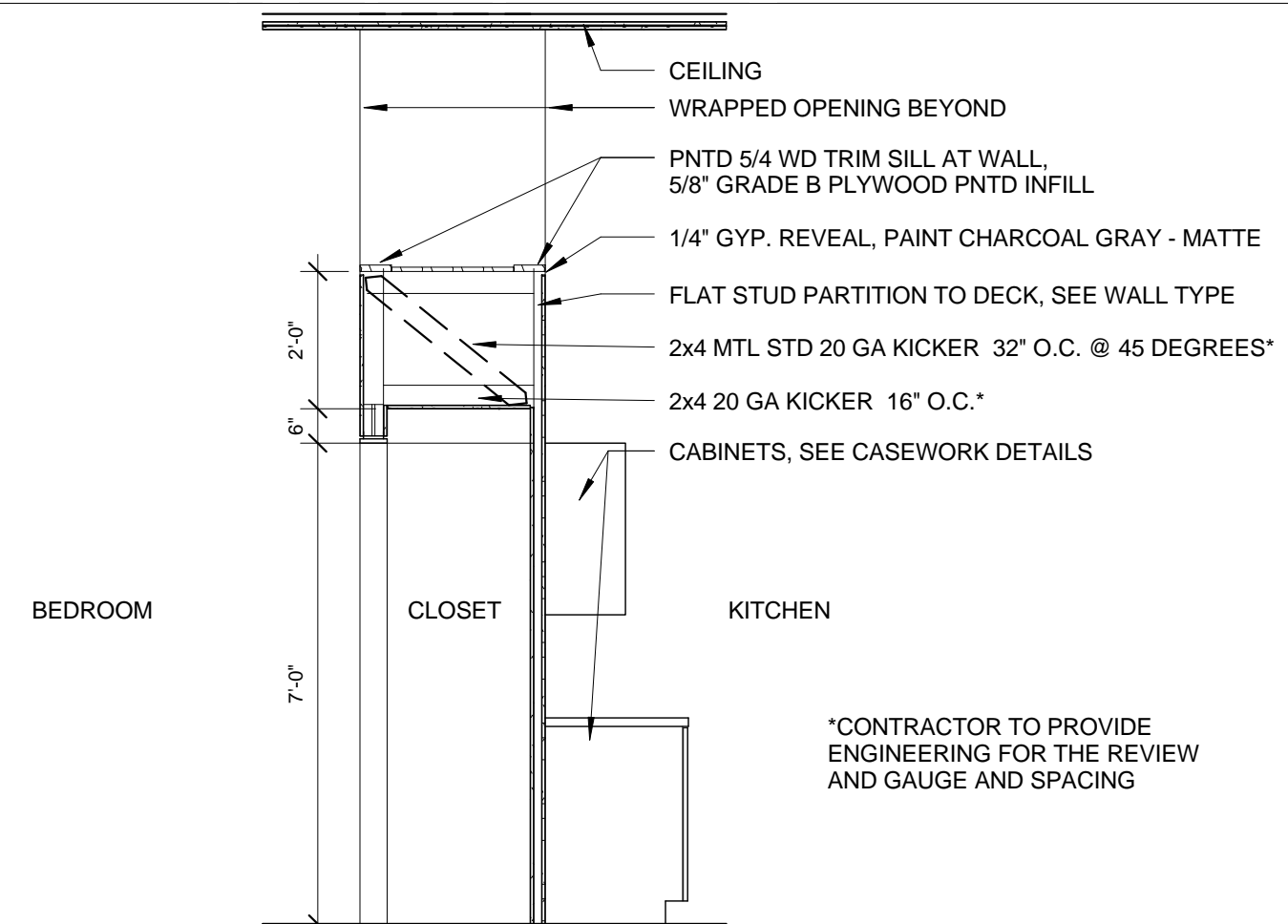
3 | BLOCKING DETAIL - WALL MOUNTED TV

1/2" = 1'-0" 0 1'-0" 2'-0" 4'-0"



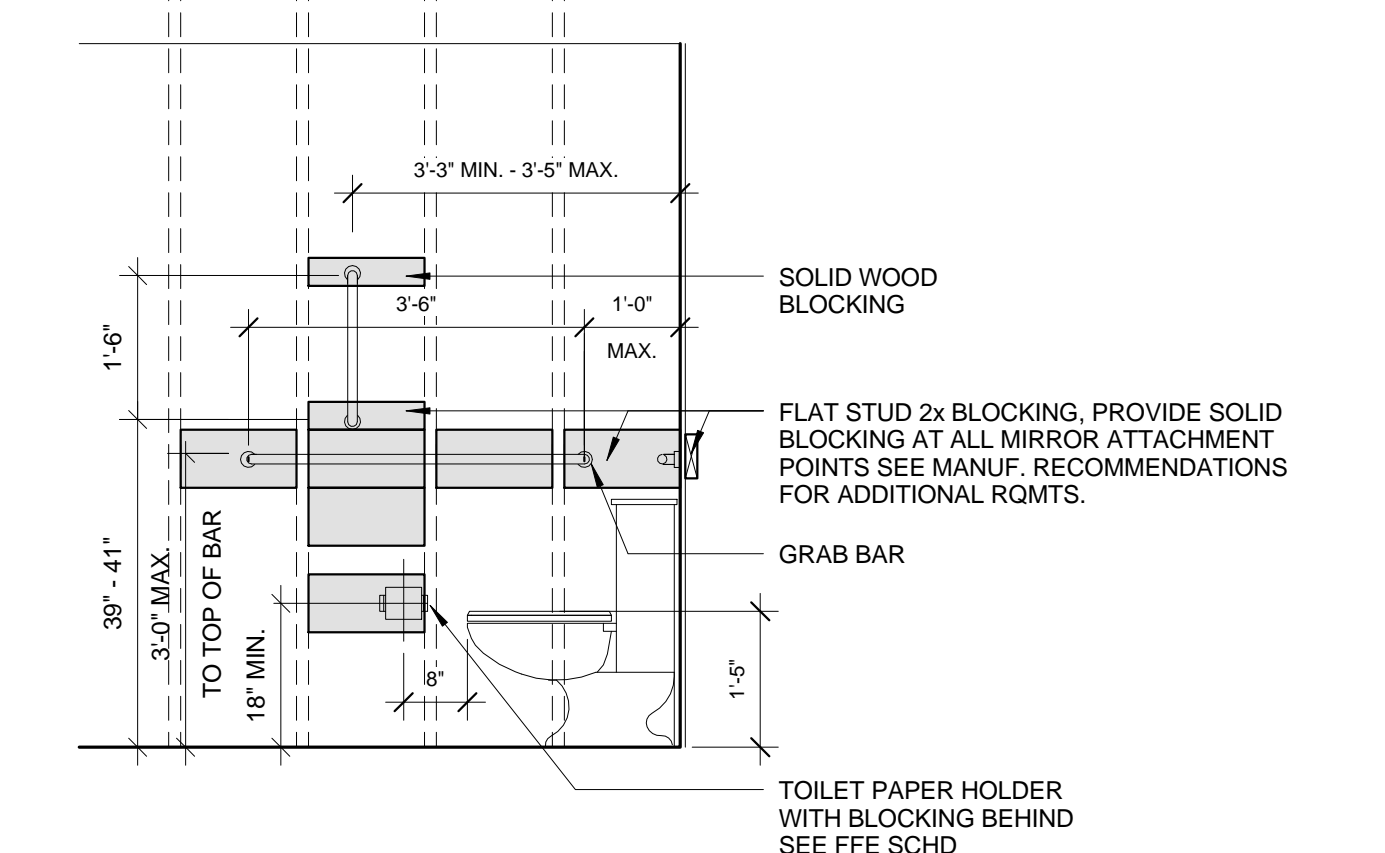
10 | PARTITION PERPENDICULAR TO OBSTRUCTION

1 1/2" = 1'-0" 0 3' 6' 1'-0" 2'-0"



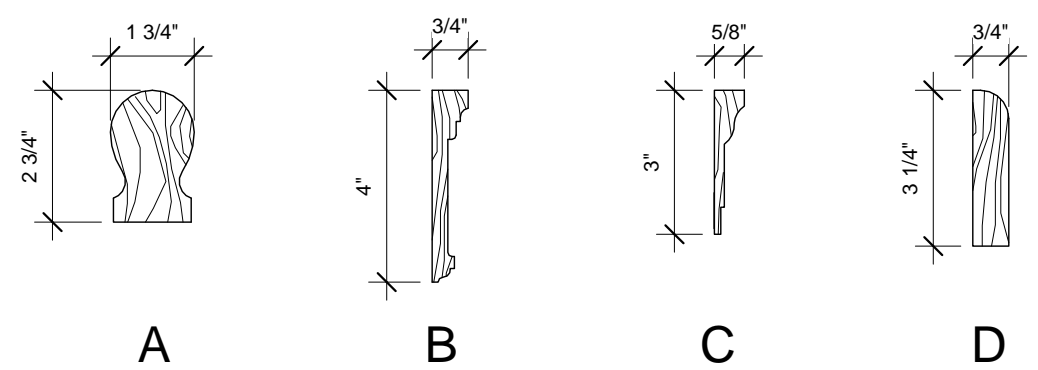
6 | FLAT STUD DETAIL

3/8" = 1'-0" 0 1'-0" 2'-0" 4'-0" 8'-0"



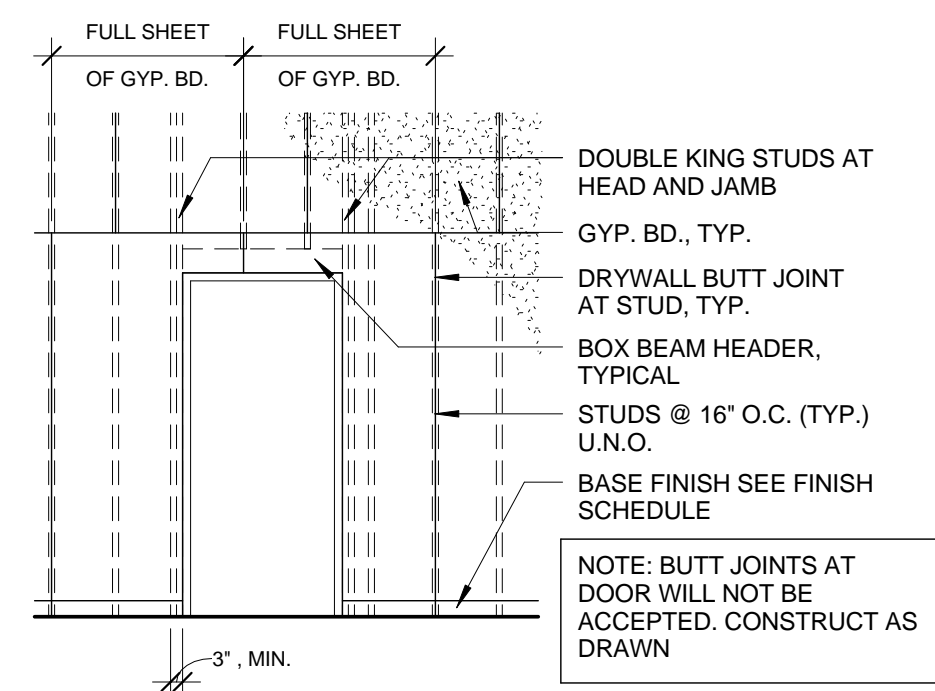
2 | BLOCKING DETAIL - TOILET

1/2" = 1'-0" 0 1'-0" 2'-0" 4'-0"



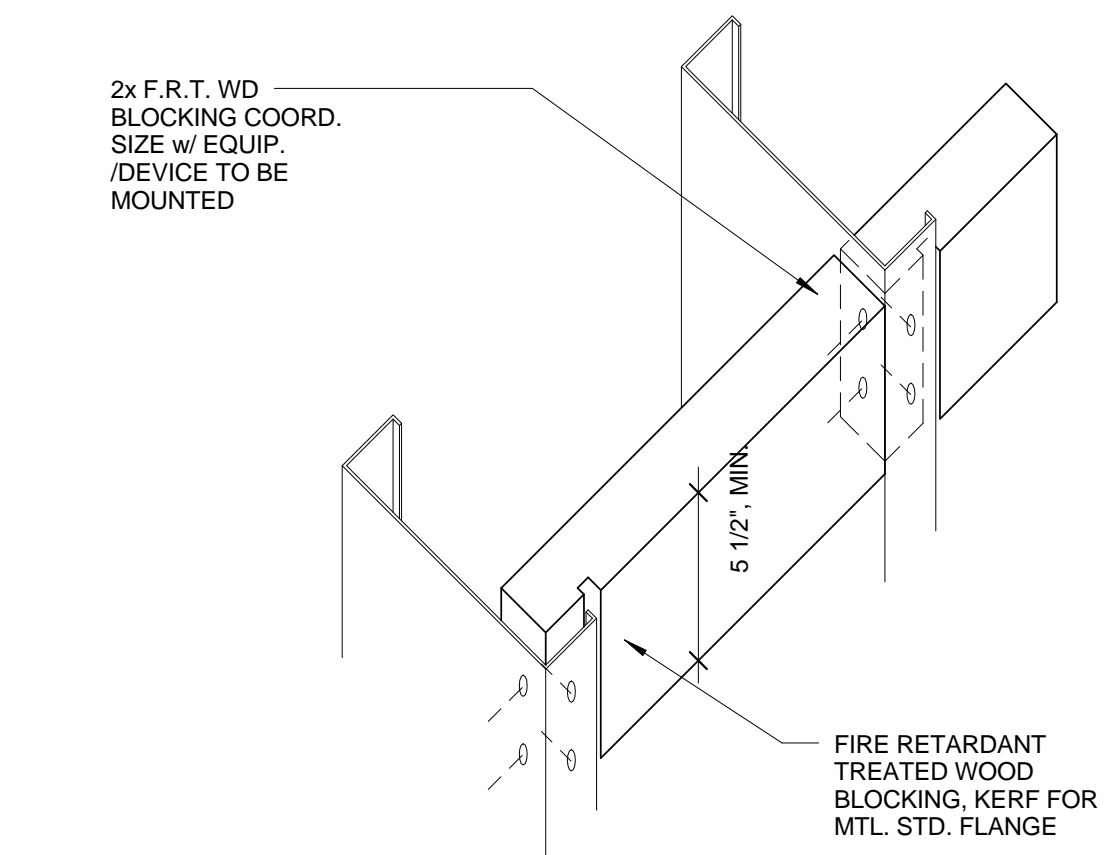
9 | EXISTING HANDRAIL & MOULDING PROFILES

3" = 1'-0" 0 1'-0" 3' 6' 1'-0"



5 | PLAN DETAIL AT SOUND CRITICAL PARTITION

1/4" = 1'-0" 0 1'-0" 2'-0" 4'-0" 8'-0"



1 | BLOCKING DETAIL (TYP.)

3" = 1'-0" 0 1'-0" 3' 6' 1'-0"