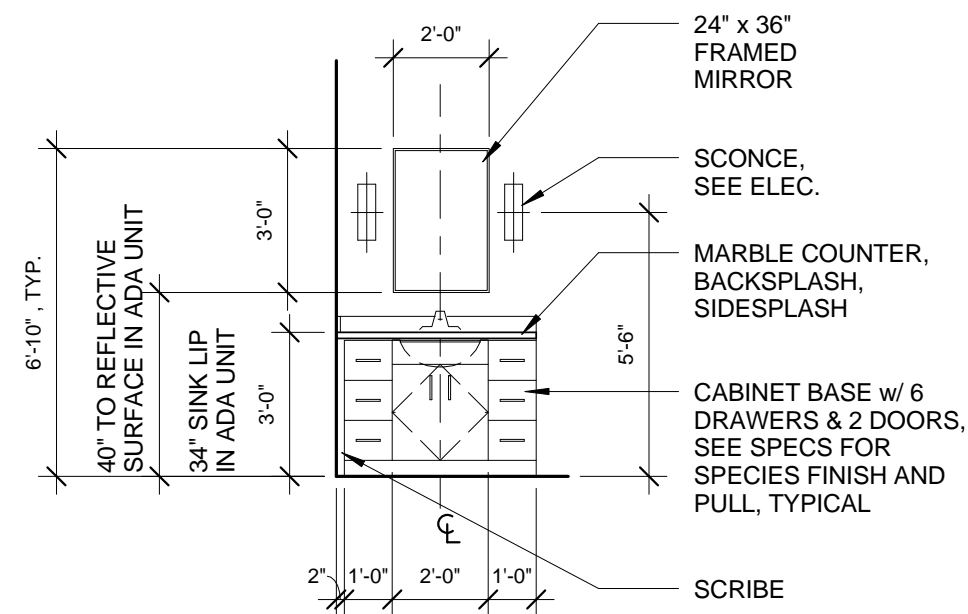


9 | TYP. SHOWER DOOR SECTION, ELEVATION & RCP

1/4" = 1'-0"

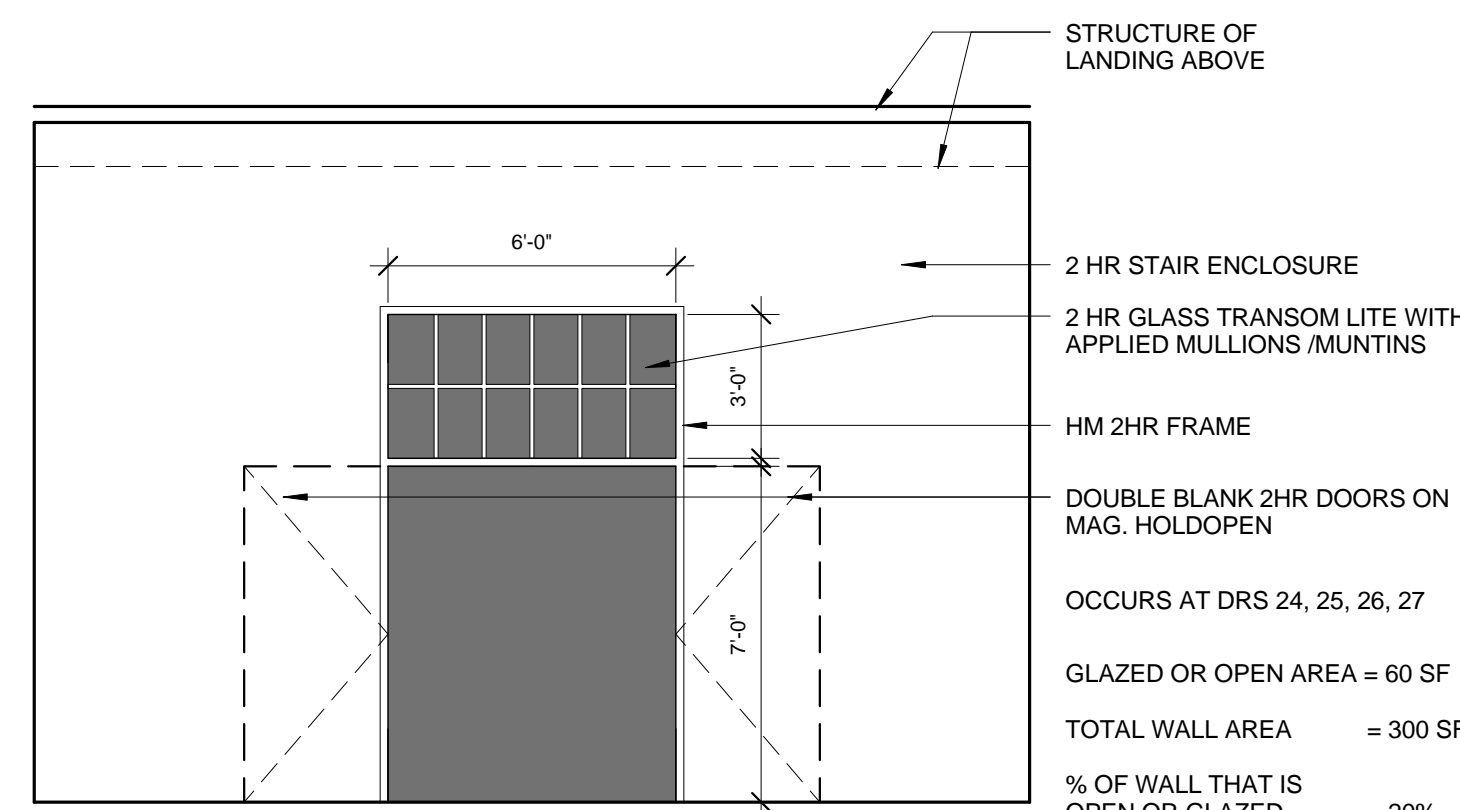
0 1'-0" 2'-0" 4'-0" 6'-0"



10 | TYPICAL BATHROOM VANITY

1/4" = 1'-0"

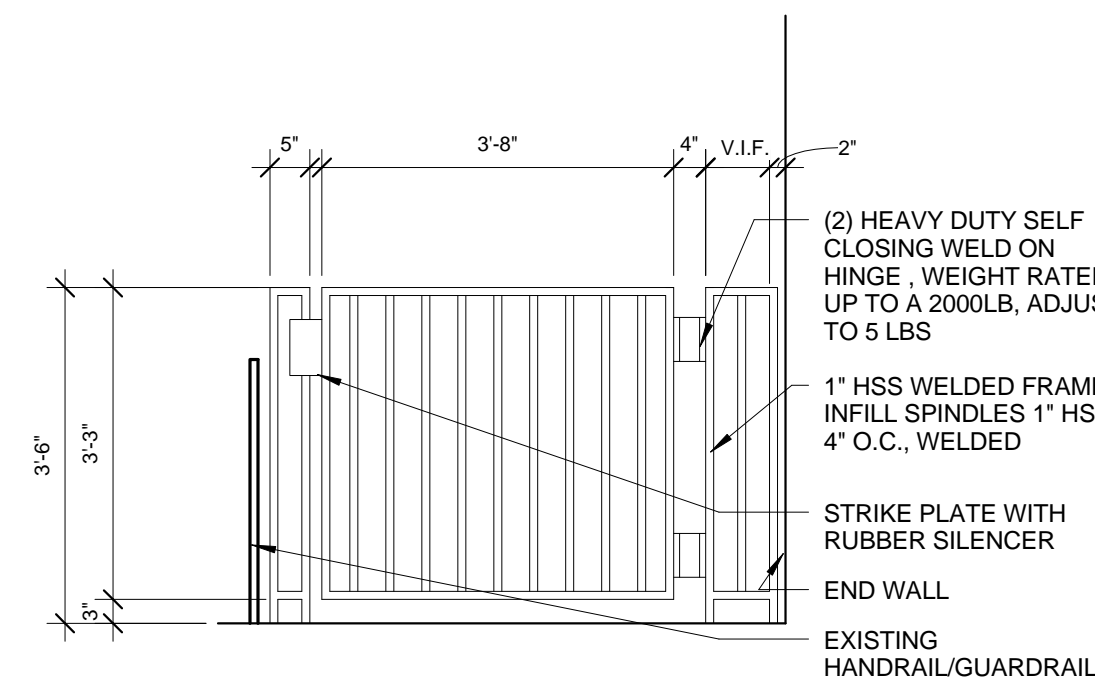
0 1'-0" 2'-0" 4'-0" 6'-0"



8 | STAIR GLAZING

1/4" = 1'-0"

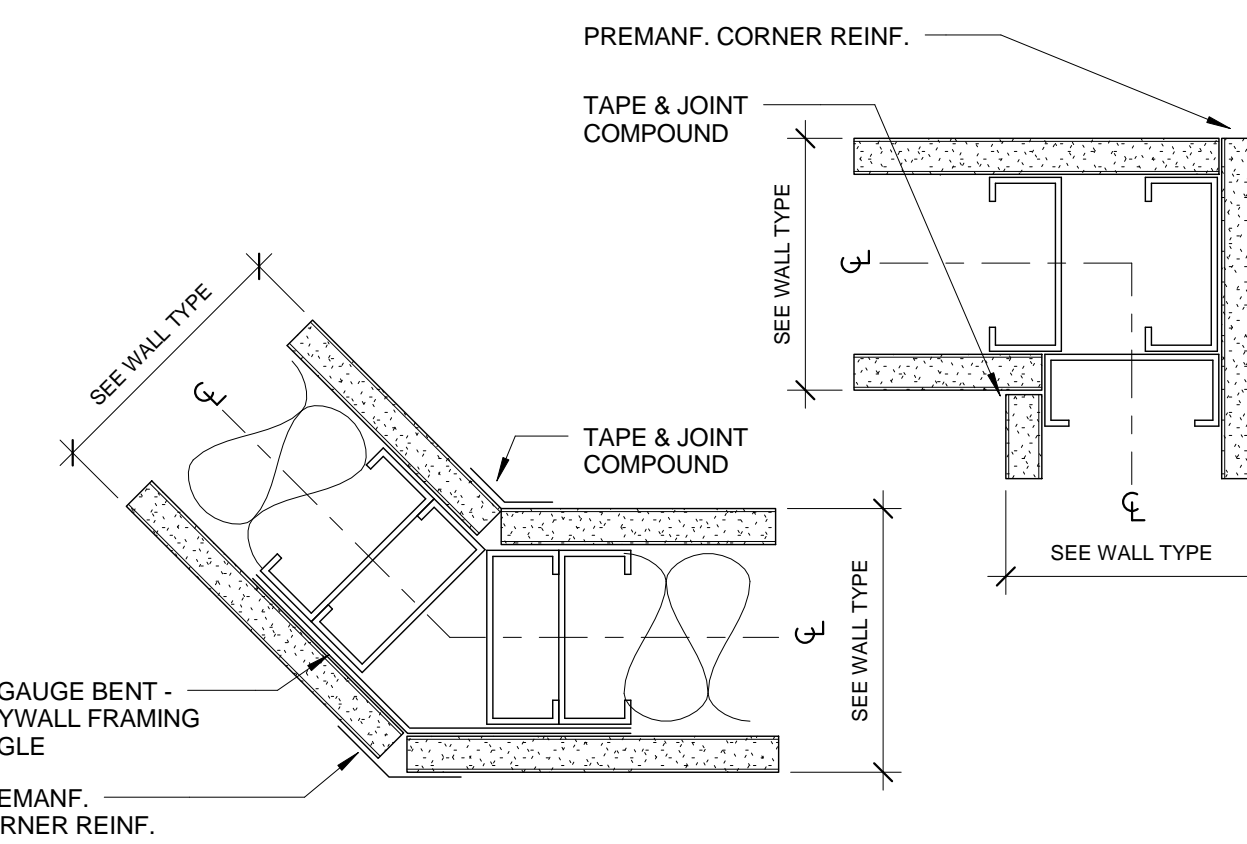
0 1'-0" 2'-0" 4'-0" 6'-0"



7 | EGRESS GATE

1/2" = 1'-0"

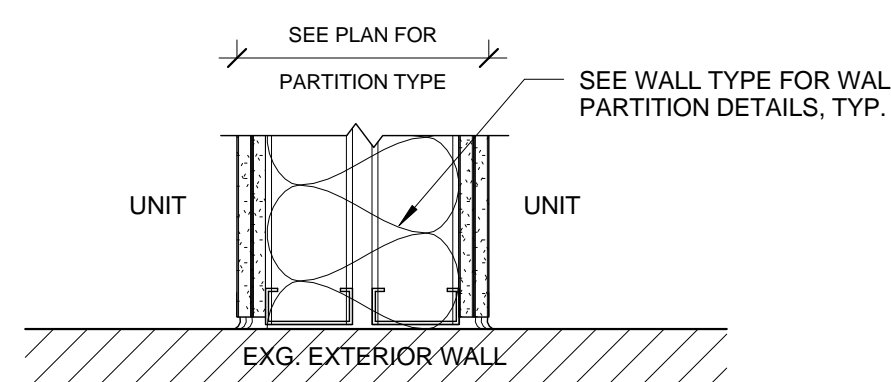
0 1'-0" 2'-0" 4'-0"



6 | TYPICAL CORNER DETAIL

3" = 1'-0"

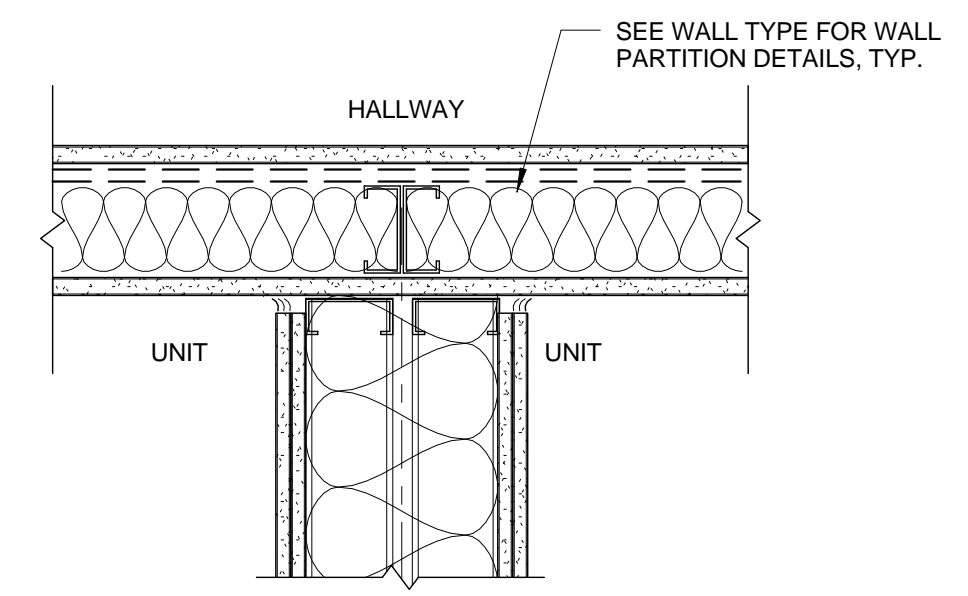
0 1'-0" 2'-0" 4'-0"



5 | PLAN DETAIL AT DEMISING WALL INTERSECTION

1 1/2" = 1'-0"

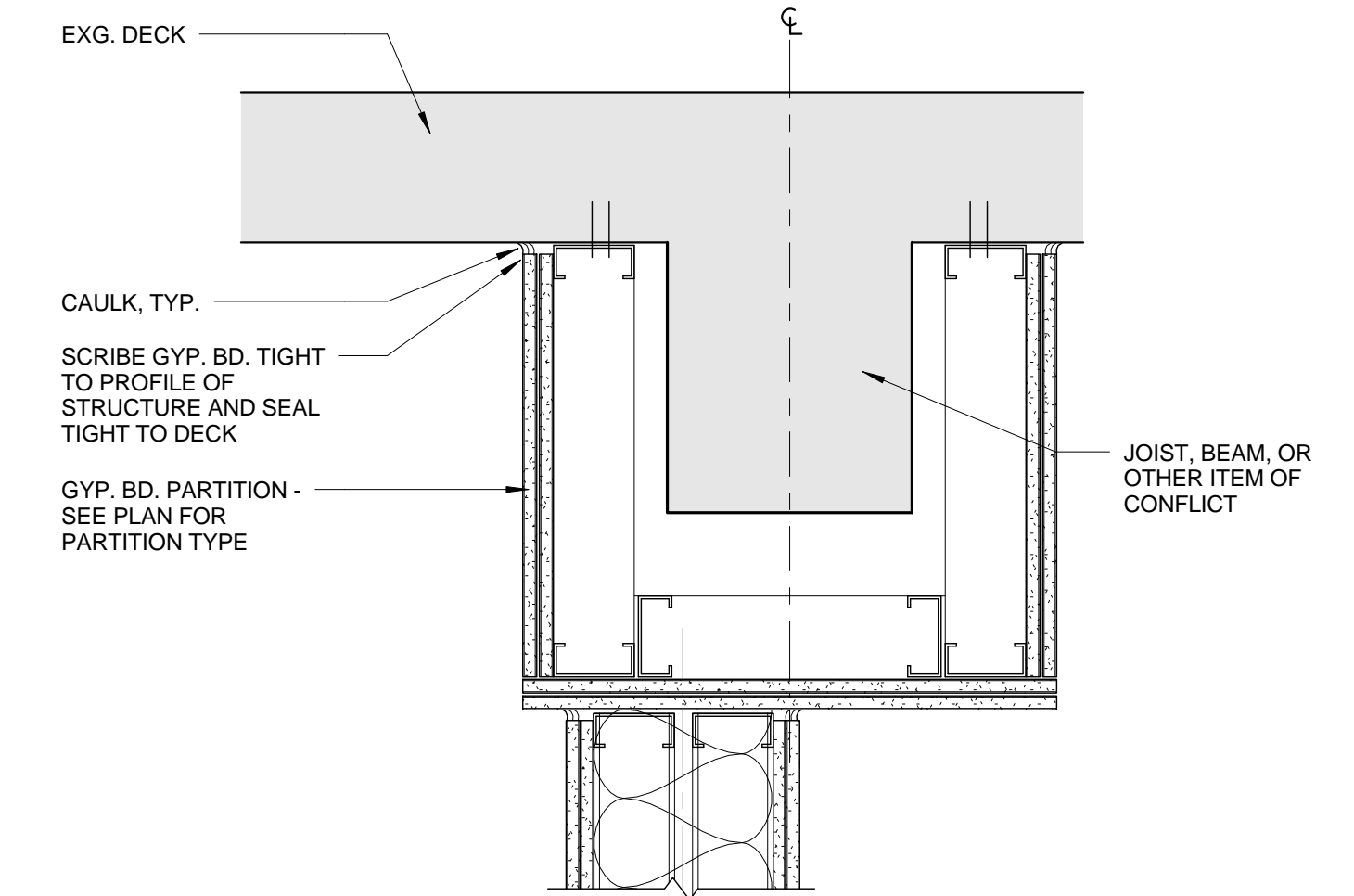
0 1'-0" 2'-0" 4'-0"



4 | PLAN DETAIL AT DEMISING WALL INTERSECTION

1 1/2" = 1'-0"

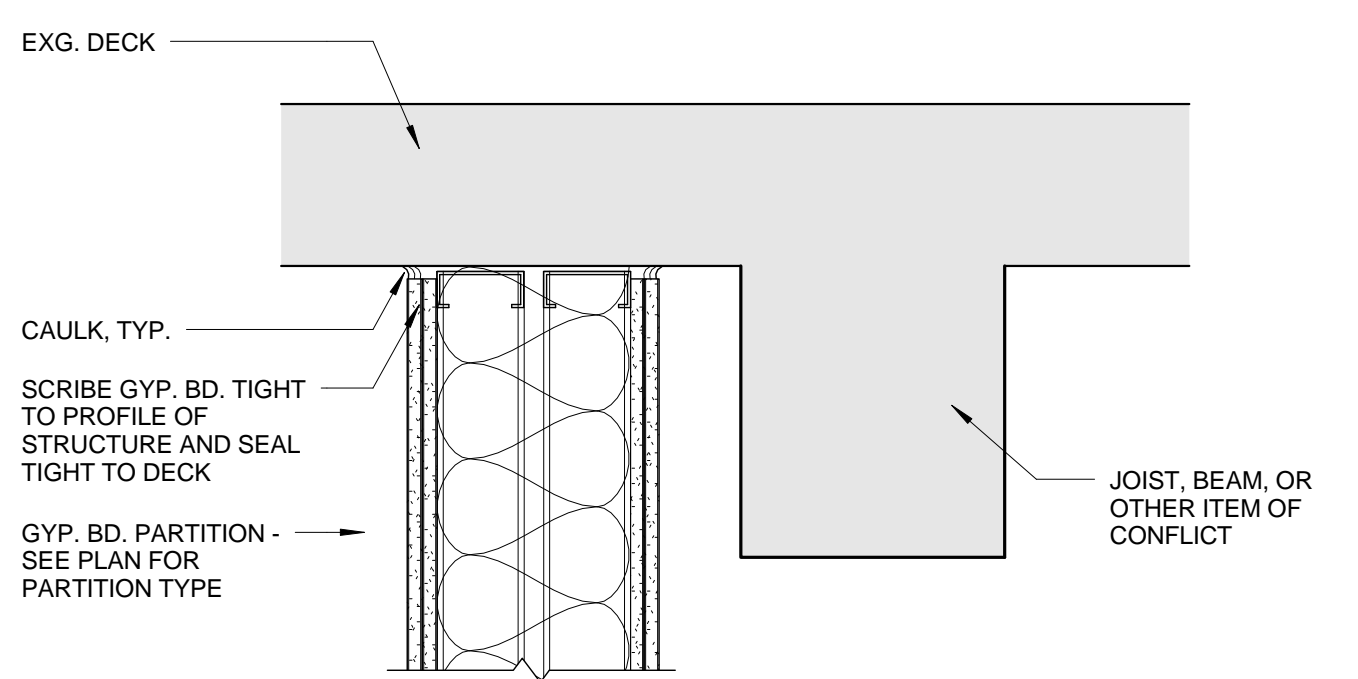
0 1'-0" 2'-0" 4'-0"



3 | PARTITION UNDER OBSTRUCTION - TYPICAL

1 1/2" = 1'-0"

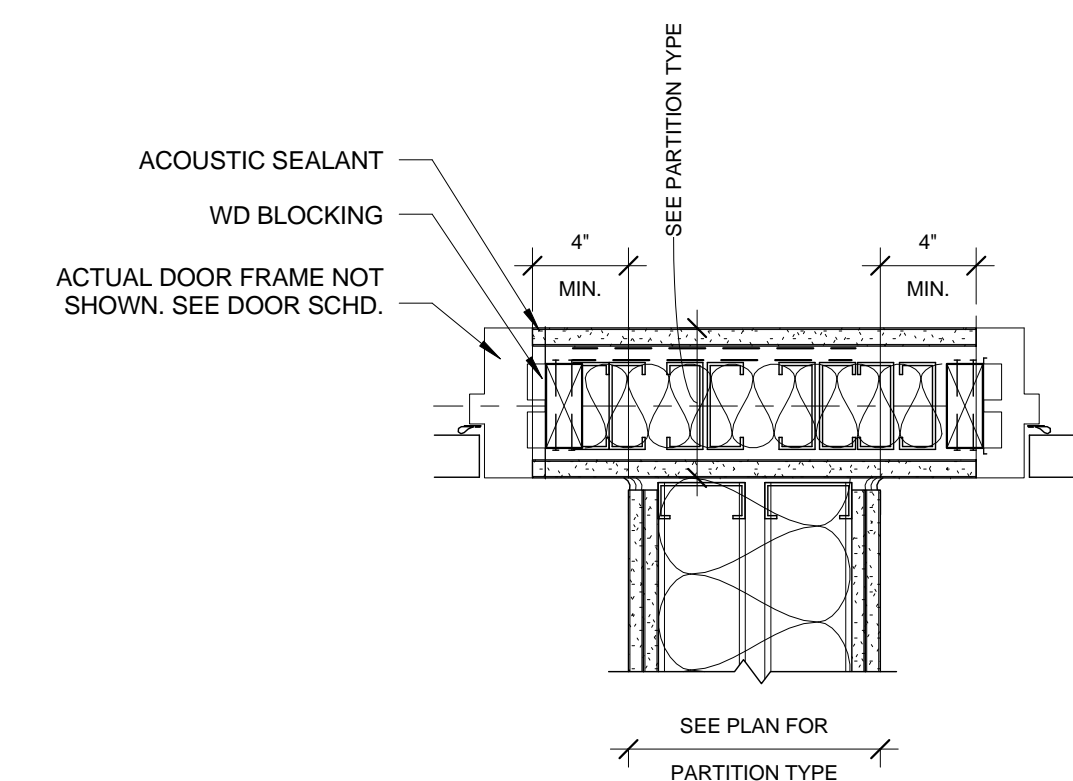
0 1'-0" 2'-0" 4'-0"



2 | PARTITION ADJACENT TO OBSTRUCTION - TYPICAL

1 1/2" = 1'-0"

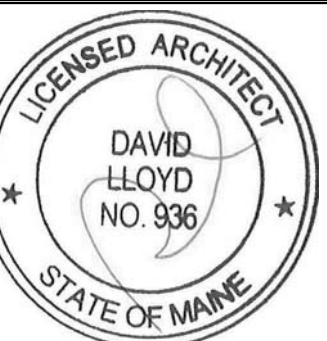
0 1'-0" 2'-0" 4'-0"



1 | TYPICAL GYPSUM DETAIL AT DOOR FRAME

1 1/2" = 1'-0"

0 1'-0" 2'-0" 4'-0"



Developers Collaborative
17 Chestnut Street
Portland, ME 04101

Architect: ARCHETYPE architects
48 Union Wharf Portland, Maine 04101
(207) 772-6022 ARCHETYPE@ARCHETYPEA.COM

Project: NATHAN CLIFFORD SCHOOL REDEVELOPMENT
180 Falmouth Street Portland, Maine

Revisions:

Date: 15 JAN 2014
Scale: As indicated
INTERIOR PARTITION DETAILS

A4.03