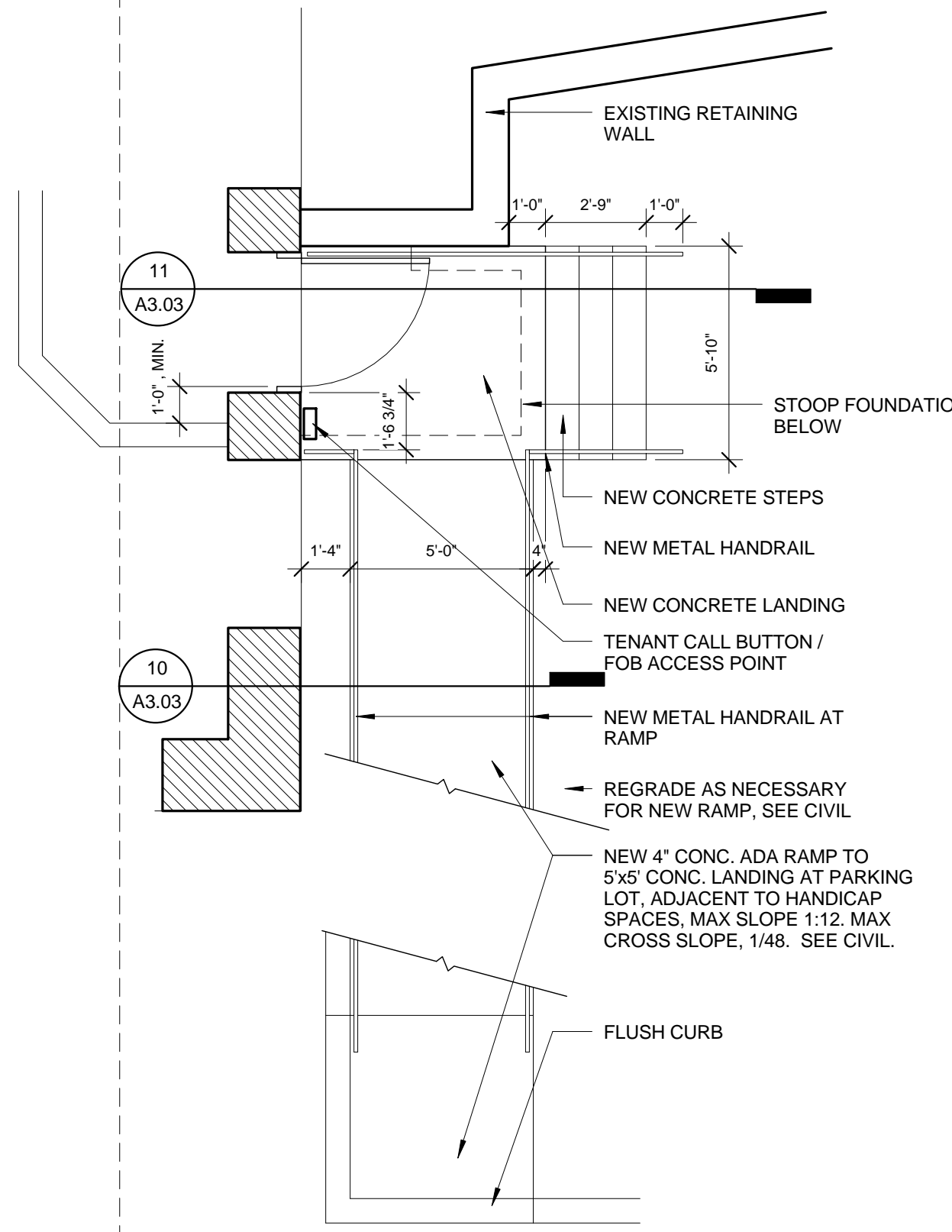


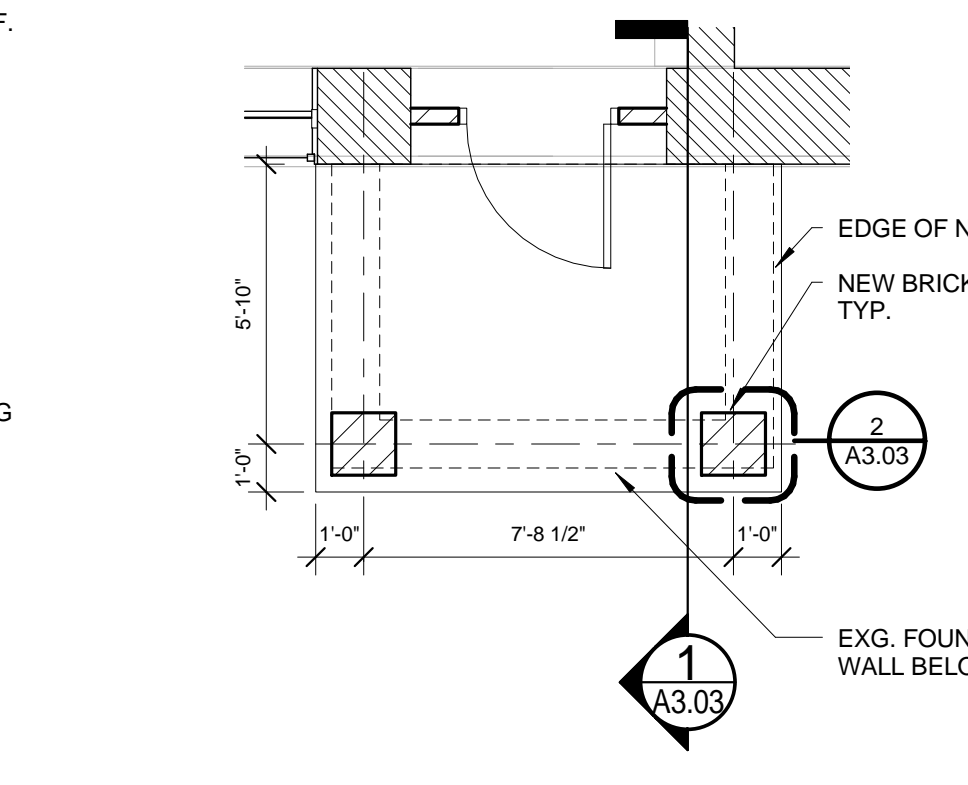


**8 | SOUTH ELEVATION - DETAIL**  
1/4" = 1'-0"

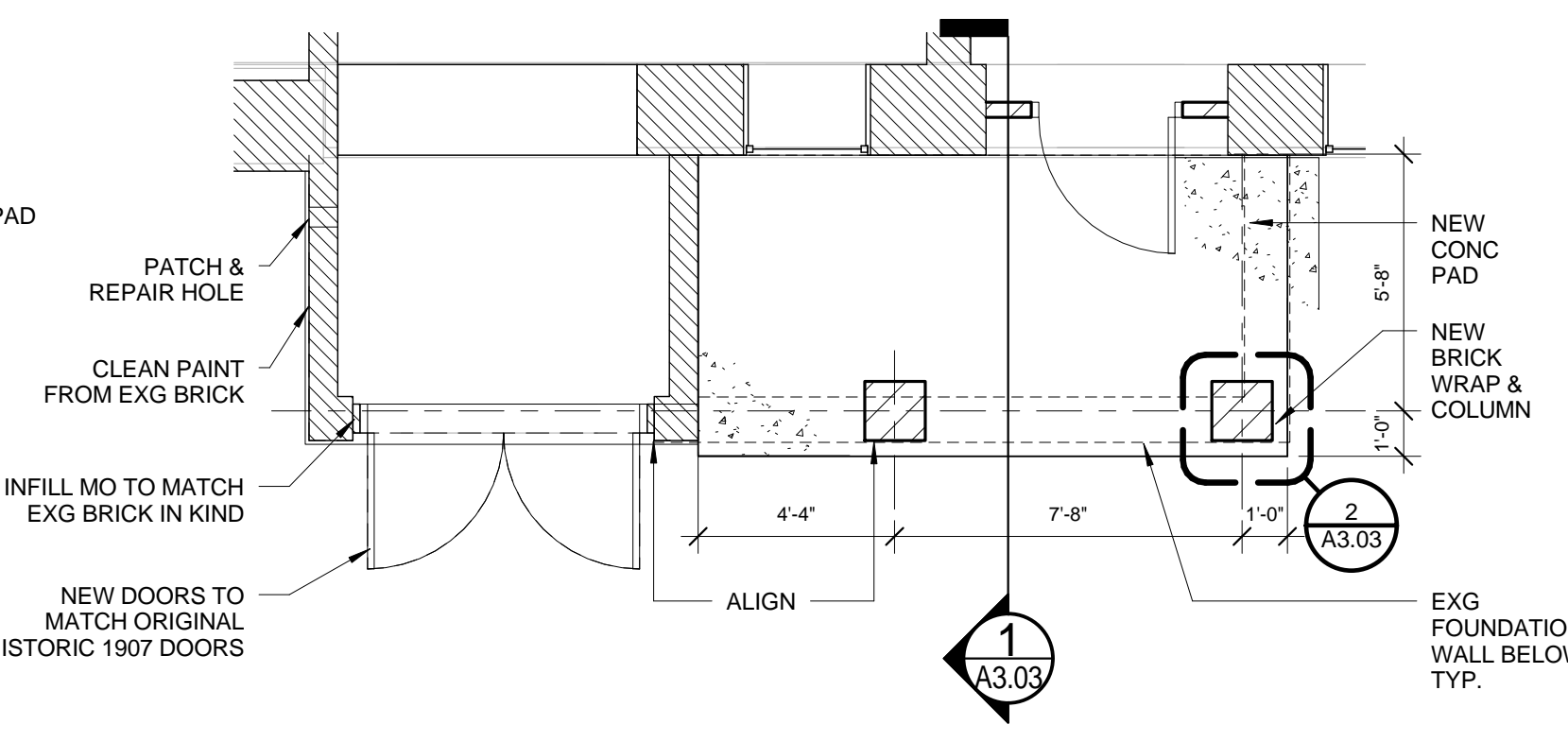
**EXTERIOR CONC:**  
 Fc = 400 PSI  
 Max W/C = 0.48  
 AIR ENTRAINED 7 +/-%  
 SLUMP 3" +/- 1"  
 3 1/2 GAL/CY DCI-S or RHEOCRETE CNI  
 WATER TO BE POTABLE & CHLOR. FREE



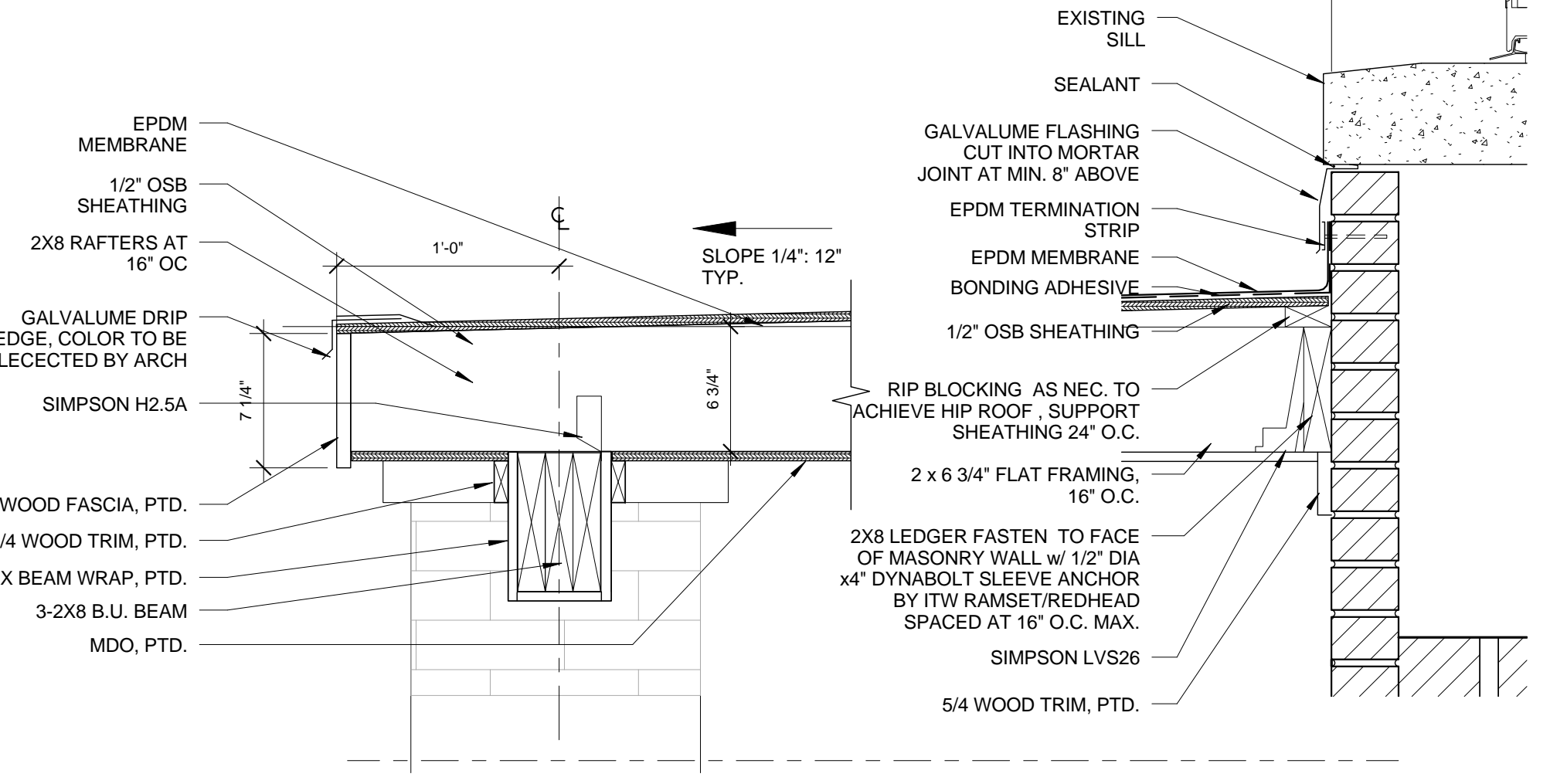
**9 | ADA RAMP**  
1/4" = 1'-0"



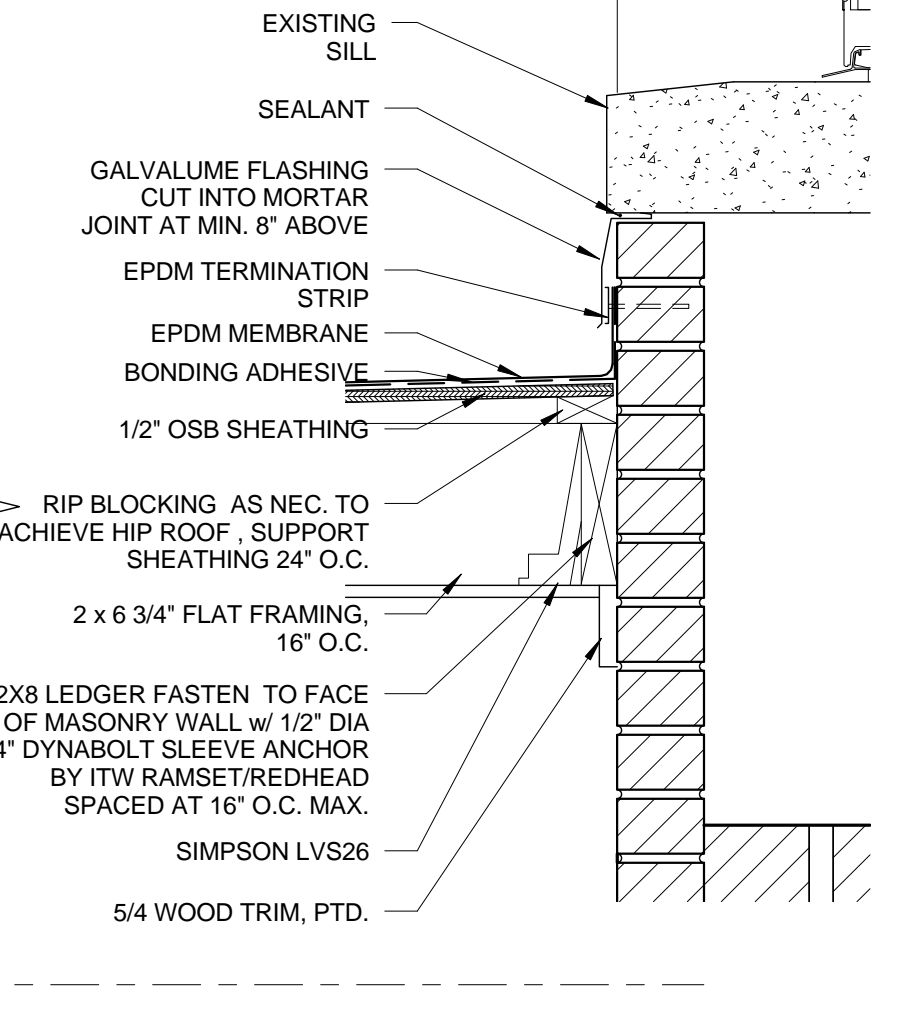
**7 | COVERED ENTRY AT STAIR B**  
1/4" = 1'-0"



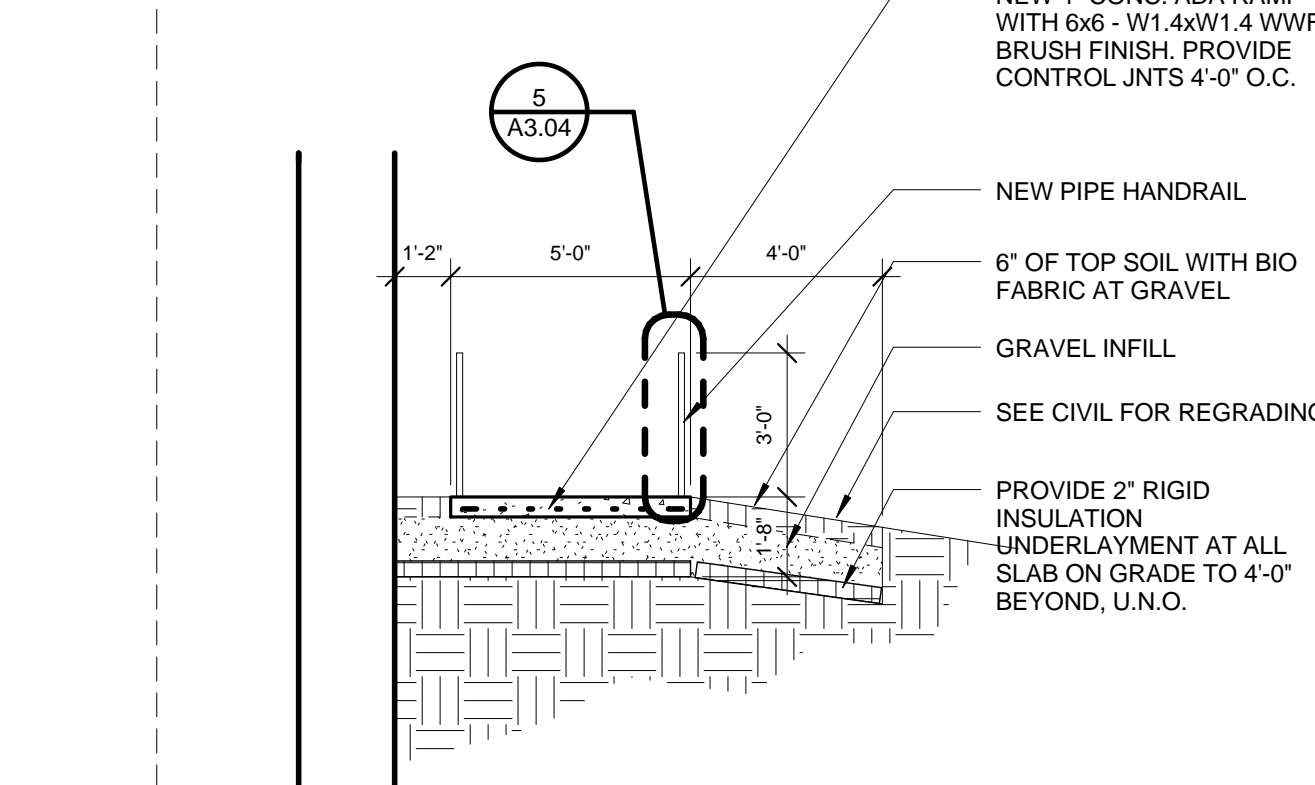
**6 | COVERED ENTRY AT STAIR A**  
1/4" = 1'-0"



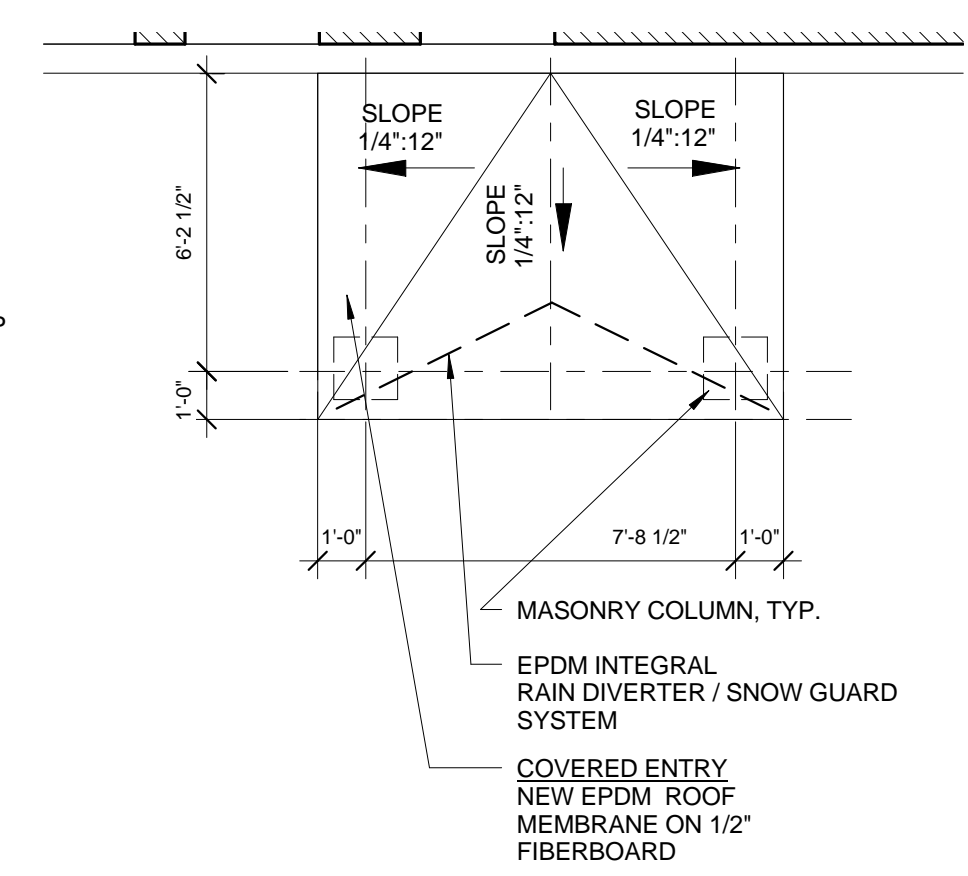
**4 | COVERED ENTRY - ROOF DETAIL**  
1 1/2" = 1'-0"



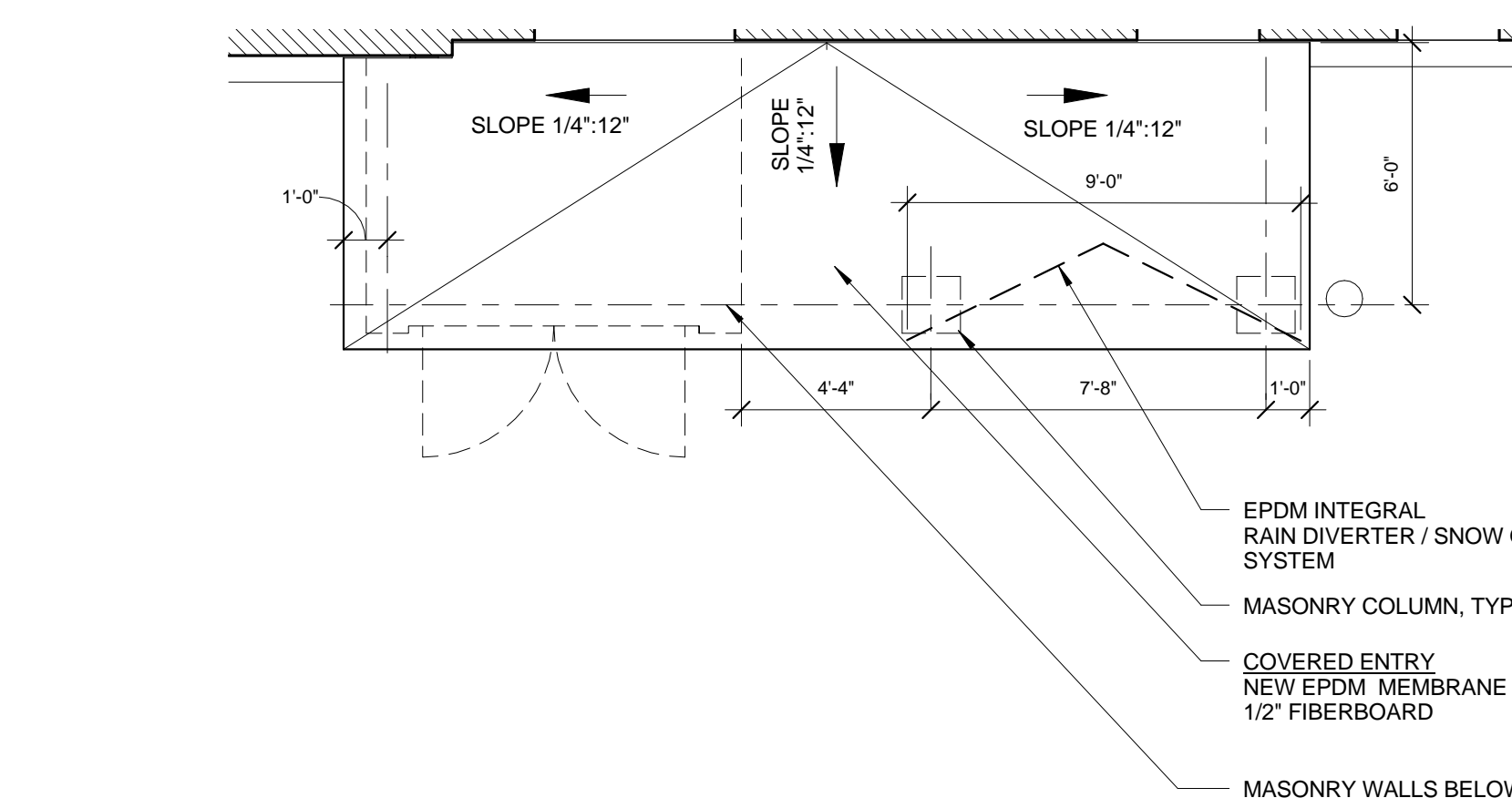
**3 | COVERED ENTRY - ROOF DETAIL**  
1 1/2" = 1'-0"



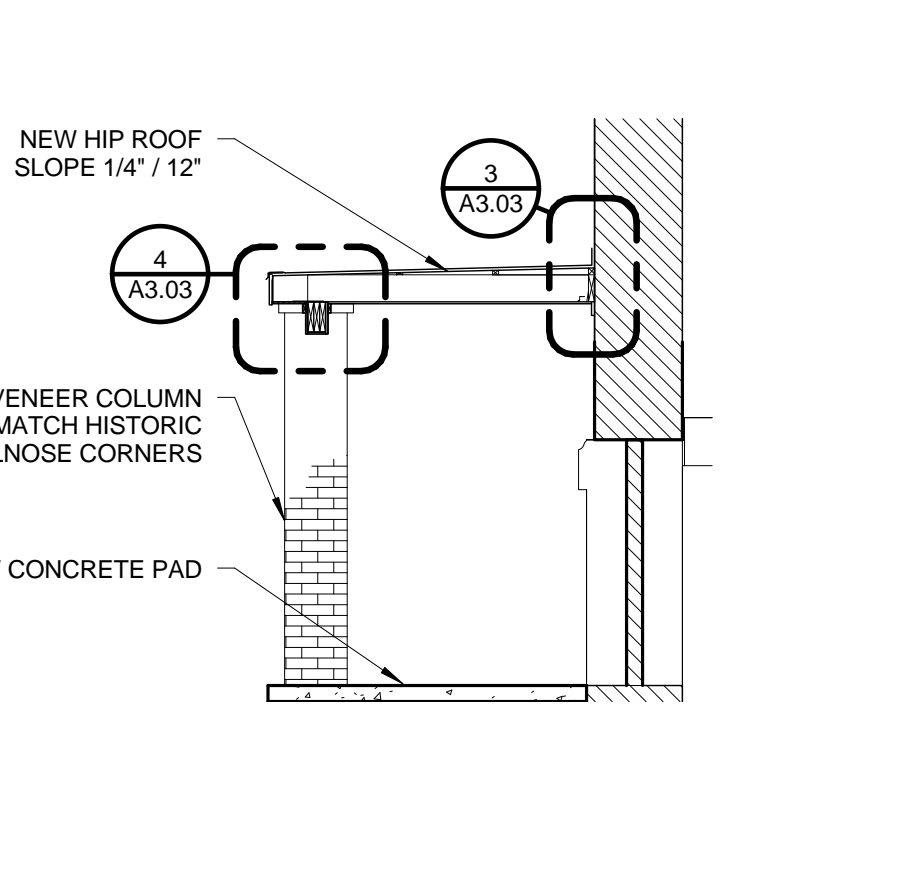
**10 | ADA RAMP SECTION A**  
1/4" = 1'-0"



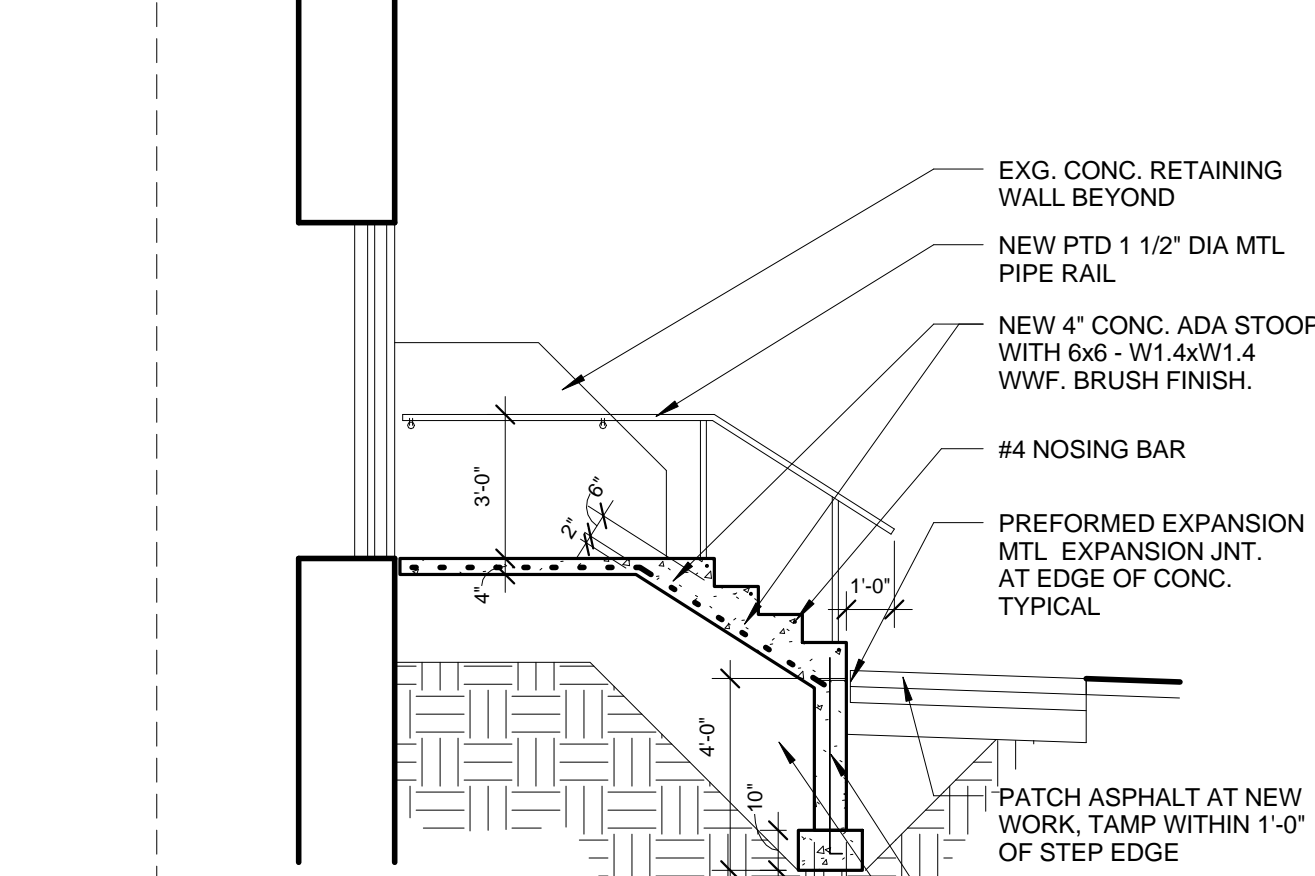
**5 | ROOF PLAN AT COVERED ENTRIES**  
1/4" = 1'-0"



**2 | COVERED ENTRY - COLUMN DETAIL**  
3/4" = 1'-0"



**1 | COVERED ENTRY - SECTION**  
1/4" = 1'-0"



**11 | ADA RAMP SECTION B**  
1/4" = 1'-0"