

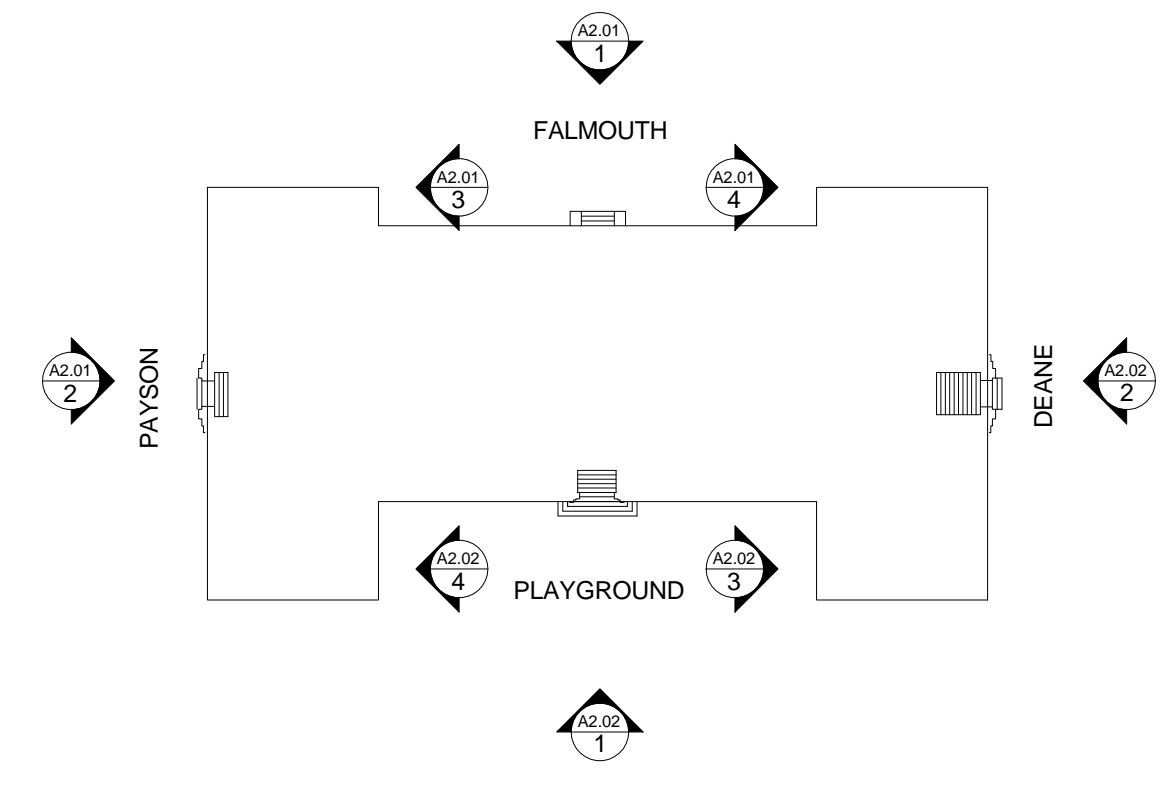
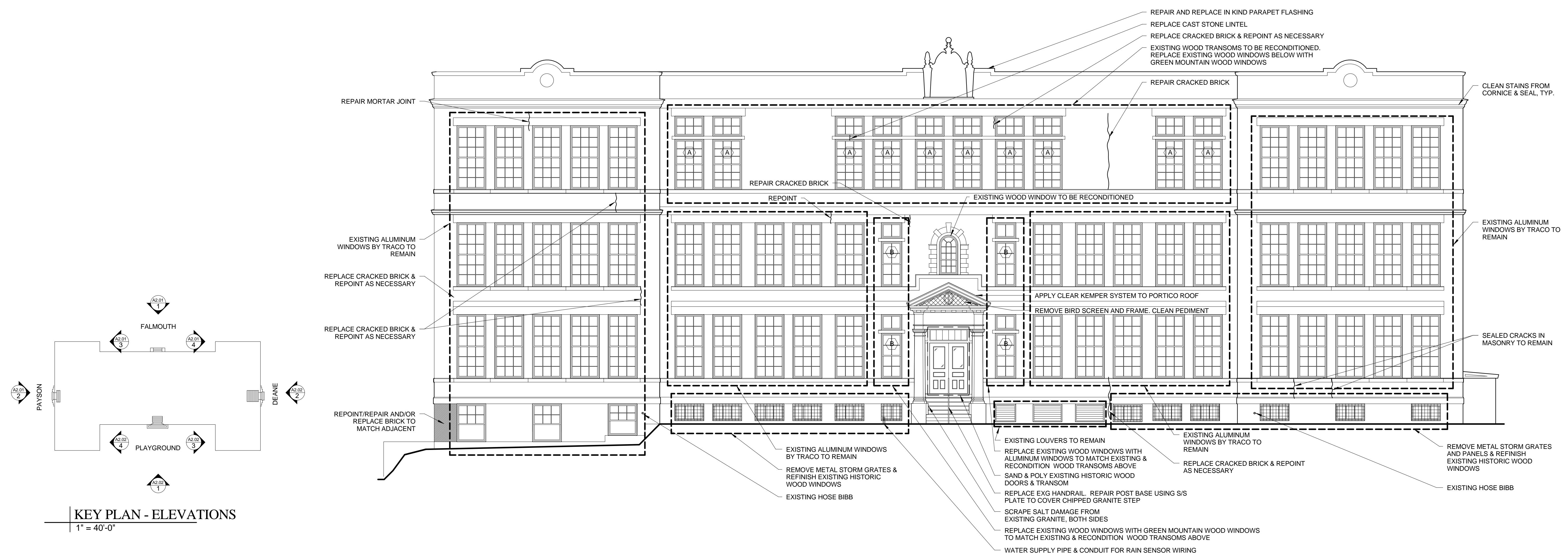
Prepared For:
Developers Collaborative
 17 Chestnut Street
 Portland, ME 04101

Consultant:
ARCHETYPE architects
 48 Union Wharf Portland, Maine 04101
 (207) 772-0022 ARCHETYPE@ARCHETYPEPA.COM

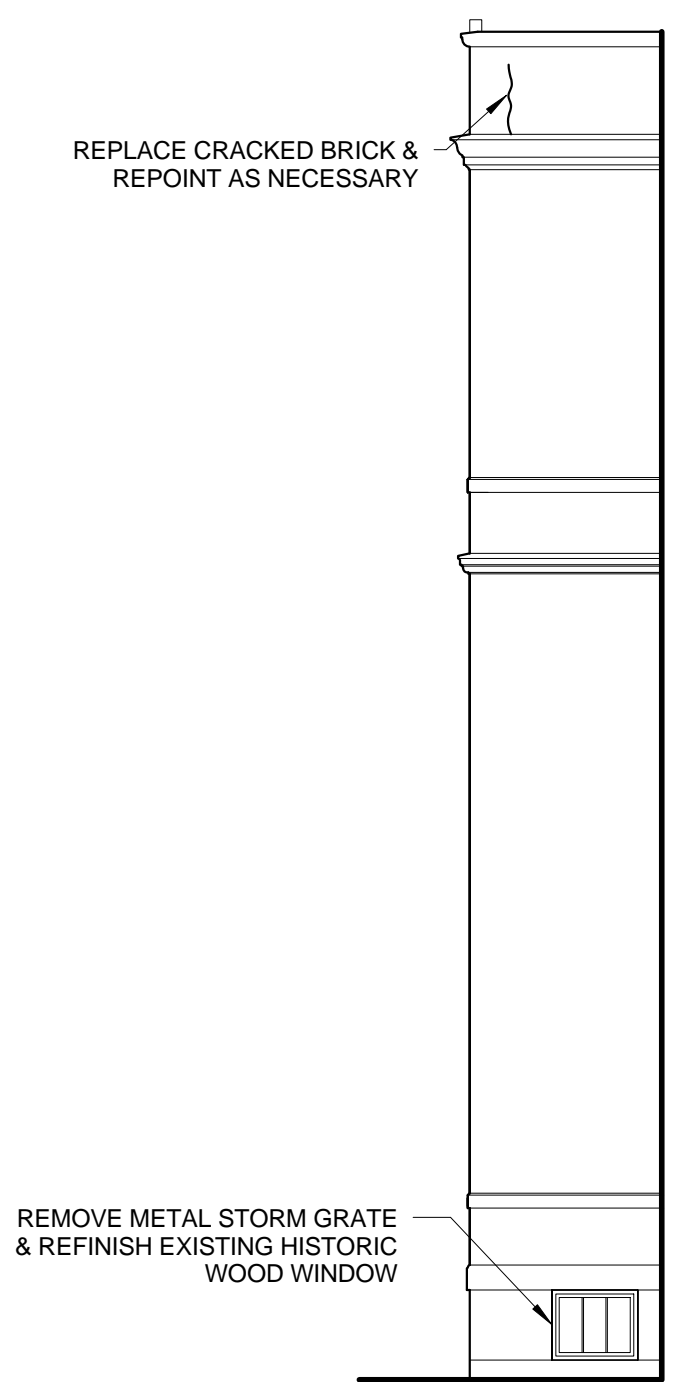
Project:
NATHAN CLIFFORD SCHOOL REDEVELOPMENT
 180 Falmouth Street Portland, Maine

Revisions:
 Scale: As indicated
BUILDING ELEVATIONS
 Date: 15 JAN 2014

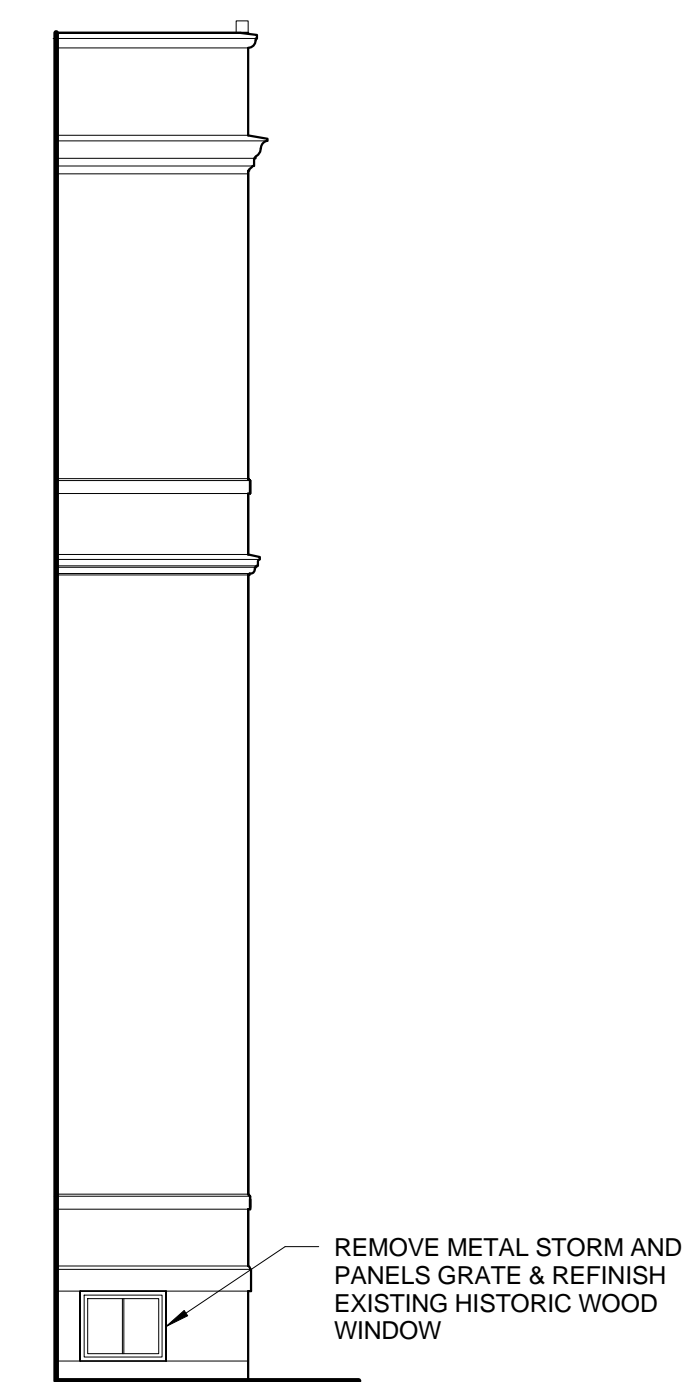
A2.01



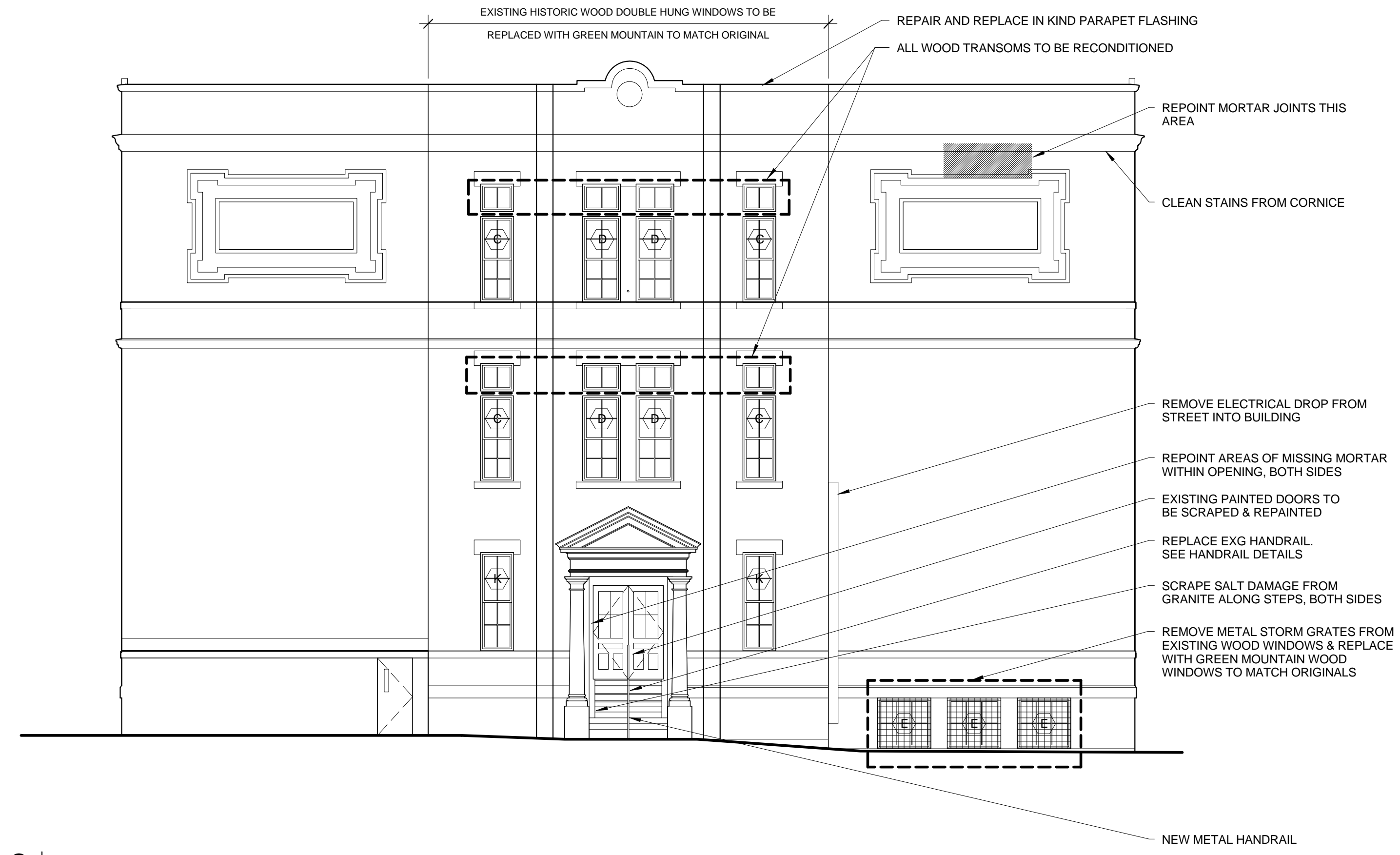
1 | NORTH ELEVATION
 1/8" = 1'-0"
 0 2'-0" 4'-0" 8'-0" 16'-0"



4 | NORTH ELEVATION - INSIDE EAST
 1/8" = 1'-0"
 0 2'-0" 4'-0" 8'-0" 16'-0"



3 | NORTH ELEVATION - INSIDE WEST
 1/8" = 1'-0"
 0 2'-0" 4'-0" 8'-0" 16'-0"



2 | WEST ELEVATION
 1/8" = 1'-0"
 0 2'-0" 4'-0" 8'-0" 16'-0"