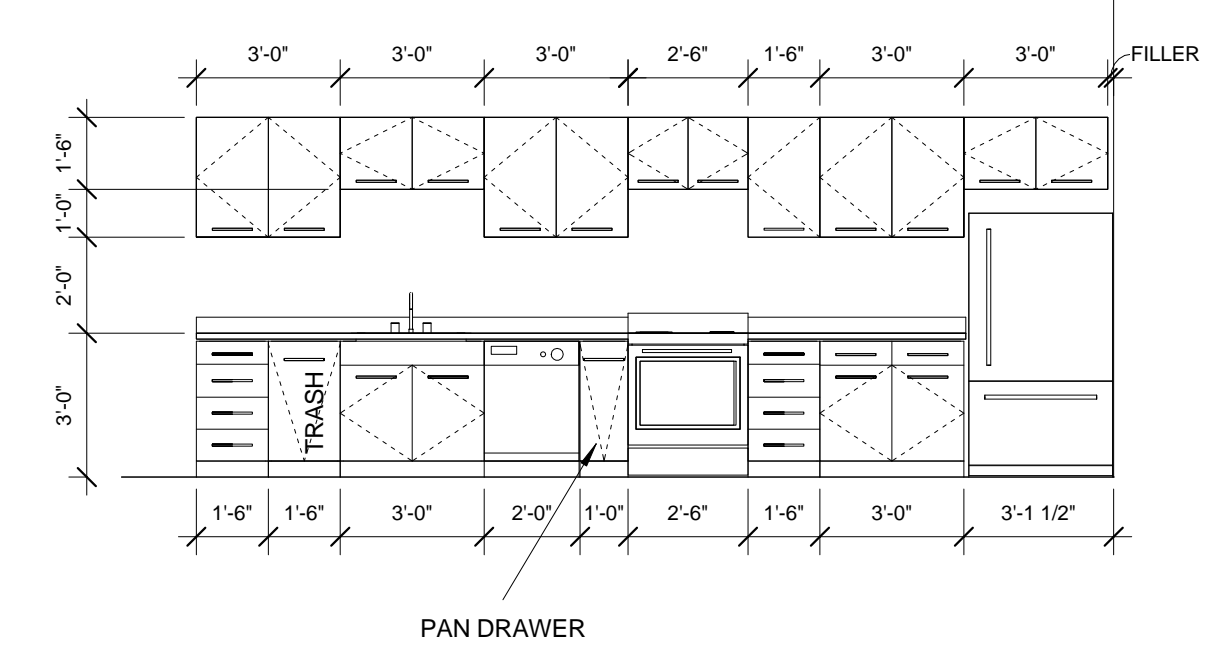
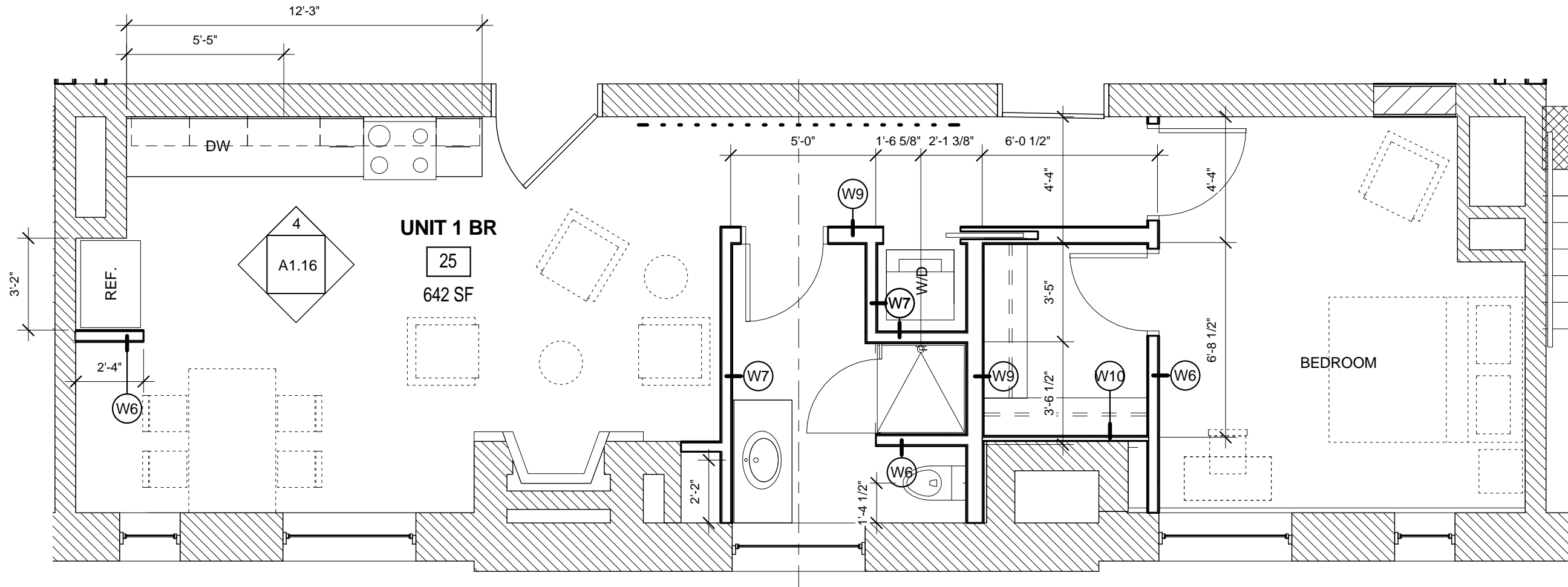


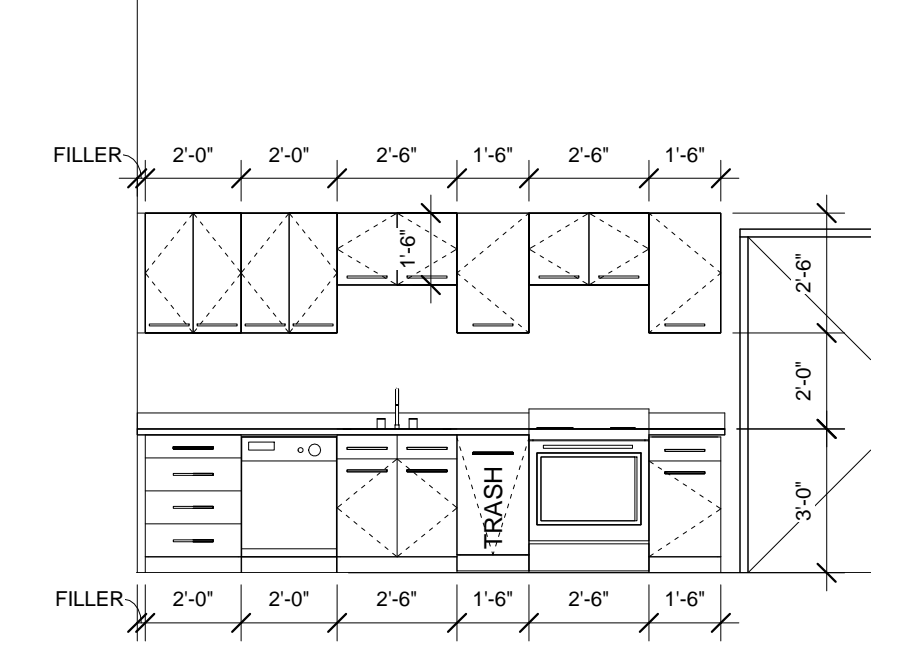
7 | THIRD FLOOR - UNIT 35
1/4" = 1'-0"



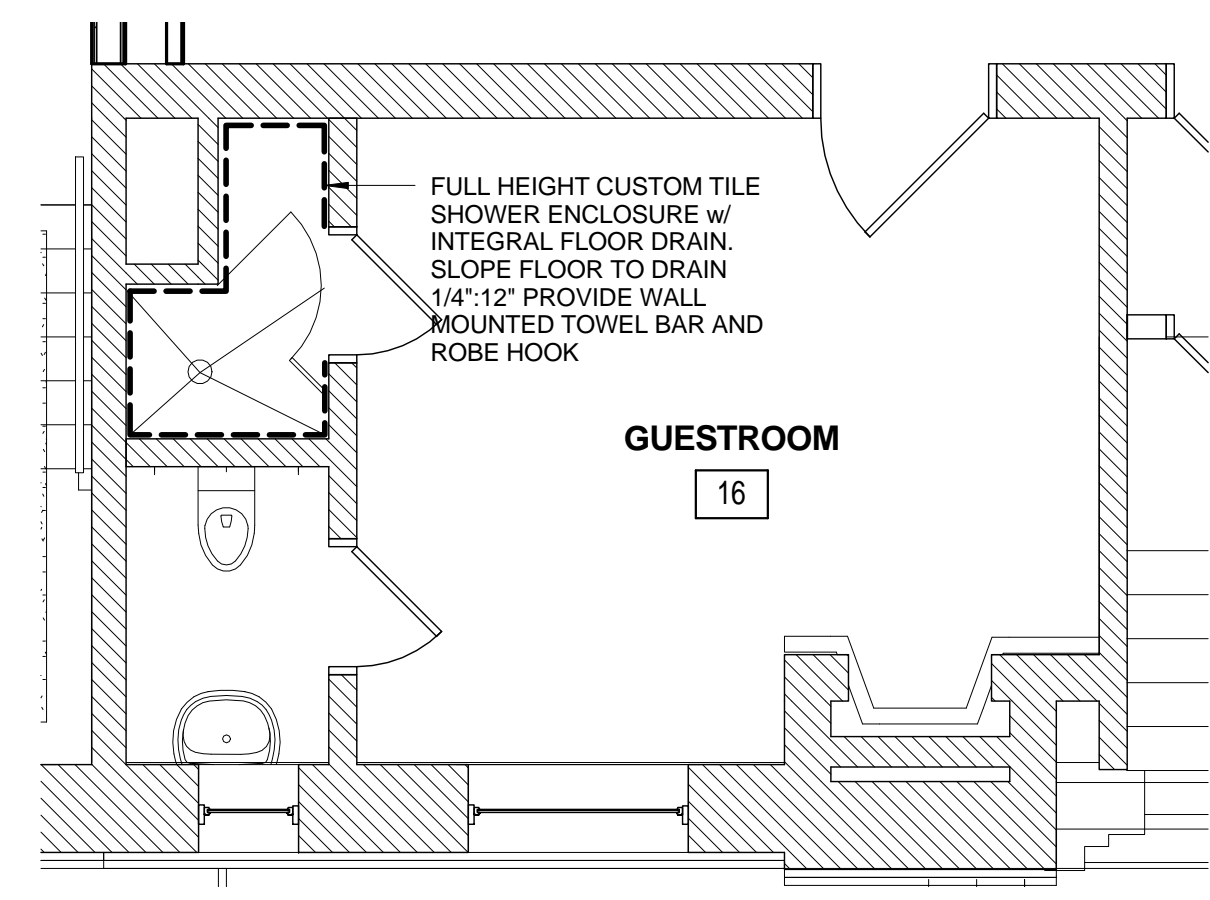
6 | KITCHEN ELEVATION - UNIT 35
1/4" = 1'-0"



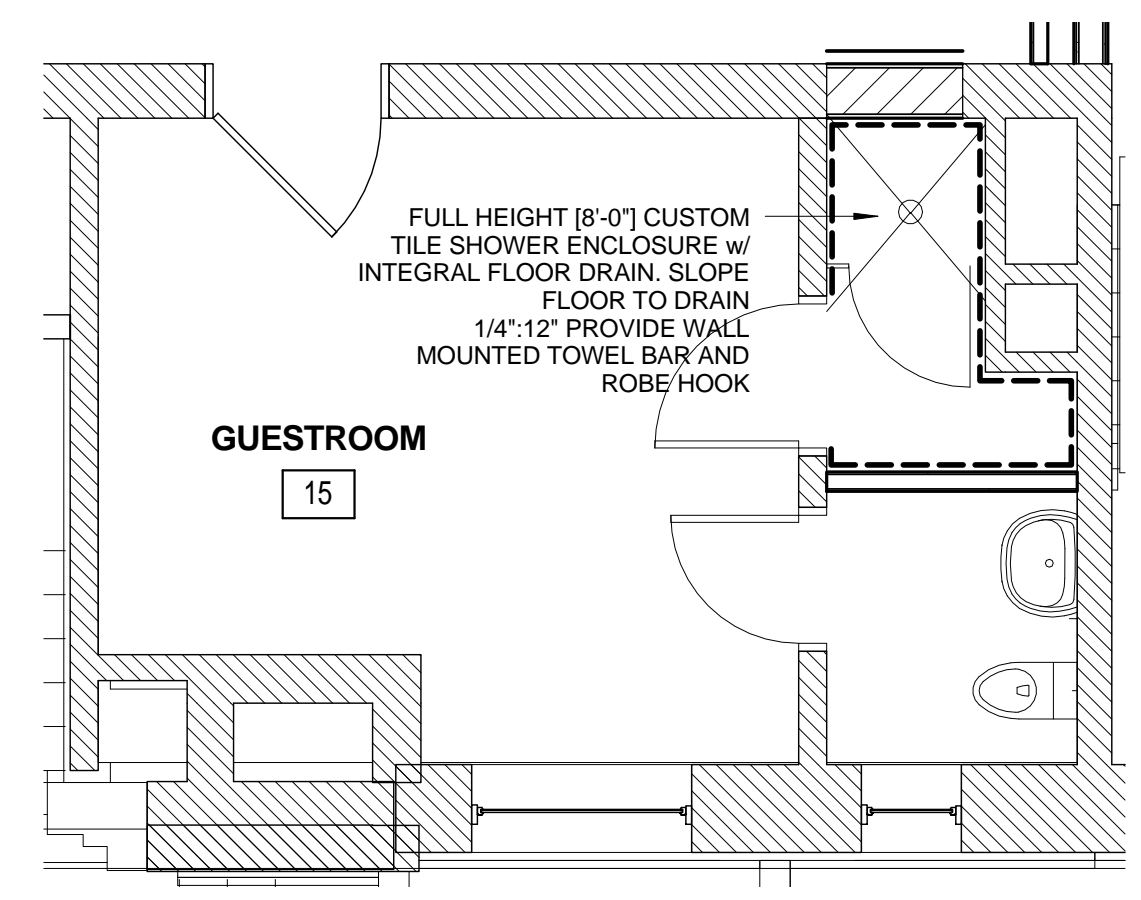
5 | SECOND FLOOR - UNIT 25
1/4" = 1'-0"



4 | KITCHEN ELEVATION - UNIT 25
1/4" = 1'-0"



3 | FIRST FLOOR - UNIT 16 - GUESTROOM
1/4" = 1'-0"



2 | FIRST FLOOR - UNIT 17 - GUESTROOM
1/4" = 1'-0"

CASEWORK GENERAL NOTES

1. ALL UPPERS ARE TO BE 14" DEEP, U.N.O.
2. ALL FULL HEIGHT UTILITY CABINETS ARE TO MATCH BASE CABINET DEPTH, U.N.O.
3. OPEN SHELVES, TYP. SHELVES SUPPORTED BY CABLE AND ROD SYSTEM TO CEILING ABOVE AND COUNTER BELOW. BASIS OF DESIGN: B&N INDUSTRIES - CABLE AND ROD SYSTEM. PROVIDE BLOCKING AS NECESSARY TO EXG STRUCTURE AT CEILING AND AT WALL AND AS RECOMMENDED BY MANF.