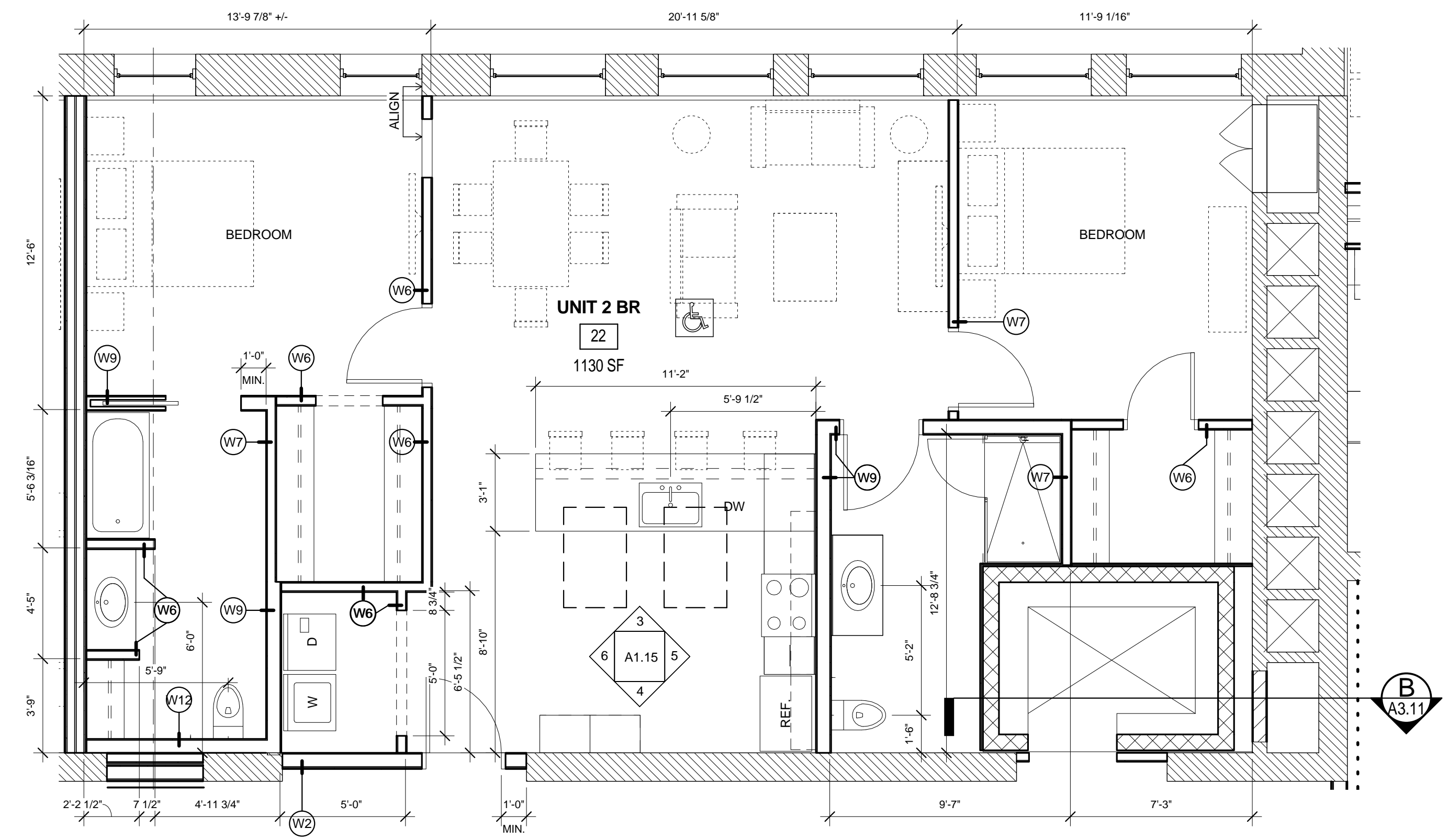


**CASEWORK GENERAL NOTES**

1. ALL UPPERS ARE TO BE 14" DEEP, U.N.O.
2. ALL FULL HEIGHT UTILITY CABINETS ARE TO MATCH BASE CABINET DEPTH, U.N.O.
3. OPEN SHELVES, TYP. SHELVES SUPPORTED BY CABLE AND ROD SYSTEM TO CEILING ABOVE AND COUNTER BELOW. BASIS OF DESIGN: B&N INDUSTRIES - CABLE AND ROD SYSTEM. PROVIDE BLOCKING AS NECESSARY TO EXG STRUCTURE AT CEILING AND AT WALL AND AS RECOMMENDED BY MANF.

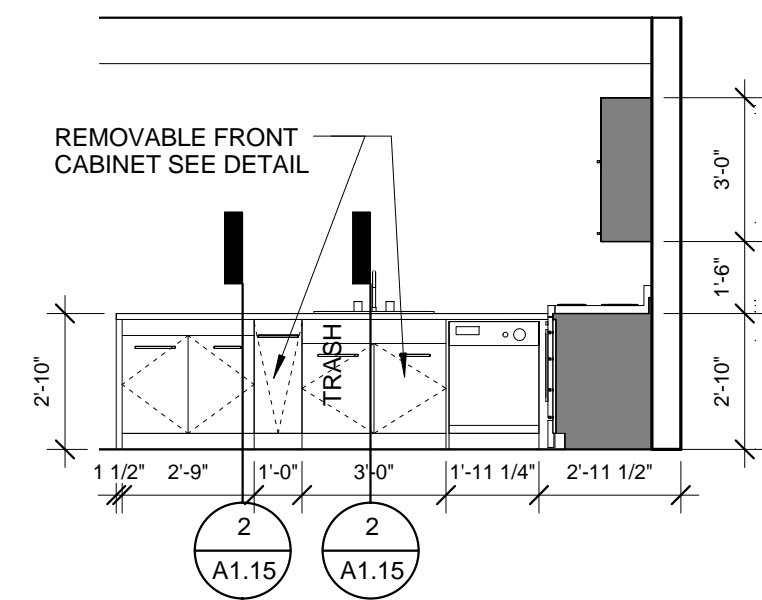
**ADA UNIT NOTES**

- PROVIDE ADA VERSIONS OF RESIDENTIAL EQUIPMENT & COMPATIBLE WITH 34" COUNTER, INCLUDING SIDE BY SIDE WASHER DRYER, REFRIGERATOR, RANGE, AND DISHWASHER.
- MOUNT HARDWARE AT HEIGHTS NOT TO EXCEED 48" AFF
- ALL MILLWORK IN THIS UNIT IS TO BE CONSTRUCTED THAT THE RIM OF COUNTER MOUNTED SINKS DOES NOT EXCEED 34" A.F.F. OR THE IN COUNTERS WITHOUT SINKS THE COUNTER HEIGHT IS NOT TO EXCEED 34" A.F.F.
- CLOSET RODS ARE TO BE MOUNTED AT 48" A.F.F.



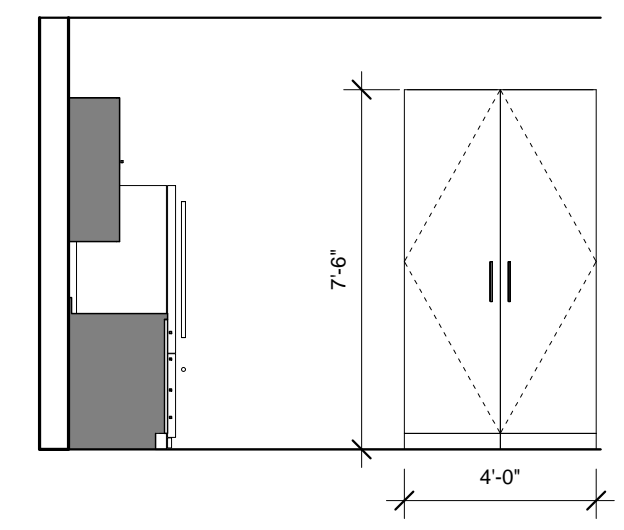
**1 | SECOND FLOOR - UNIT 22**

1/4" = 1'-0" 0 1'-0" 2'-0" 4'-0" 8'-0"



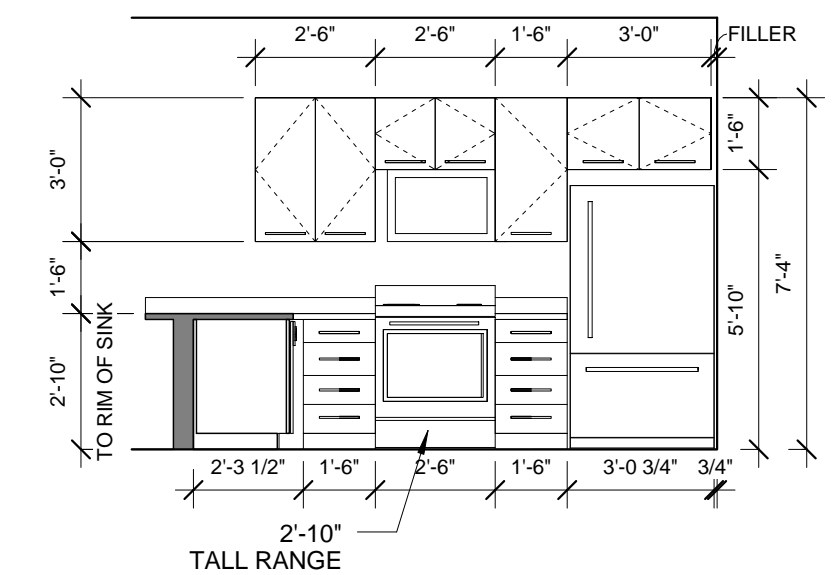
**3 | SECOND FLOOR - UNIT 22 - ELEV A**

1/4" = 1'-0" 0 1'-0" 2'-0" 4'-0" 8'-0"



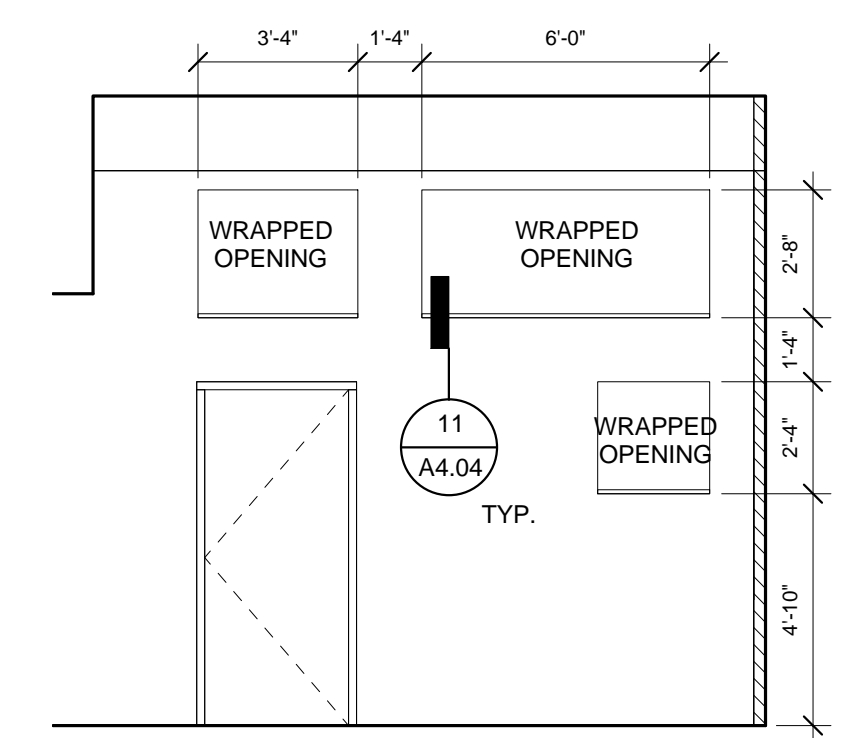
**4 | SECOND FLOOR - UNIT 22 - ELEV B**

1/4" = 1'-0" 0 1'-0" 2'-0" 4'-0" 8'-0"



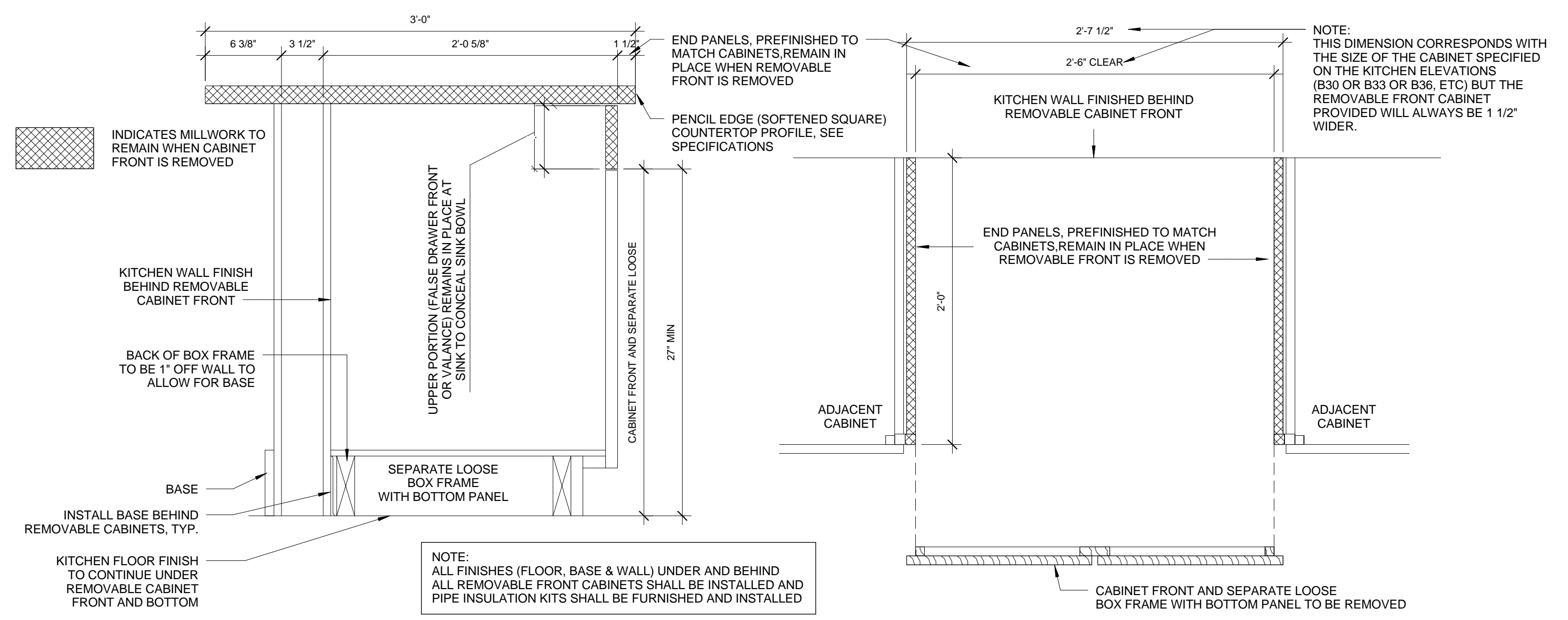
**5 | SECOND FLOOR - UNIT 22 - ELEV C**

1/4" = 1'-0" 0 1'-0" 2'-0" 4'-0" 8'-0"



**6 | SECOND FLOOR - UNIT 22 - ELEV D**

1/4" = 1'-0" 0 1'-0" 2'-0" 4'-0" 8'-0"



**2 | ADA KITCHEN DETAILS**

1 1/2" = 1'-0" 0 3' 6' 12' 24'