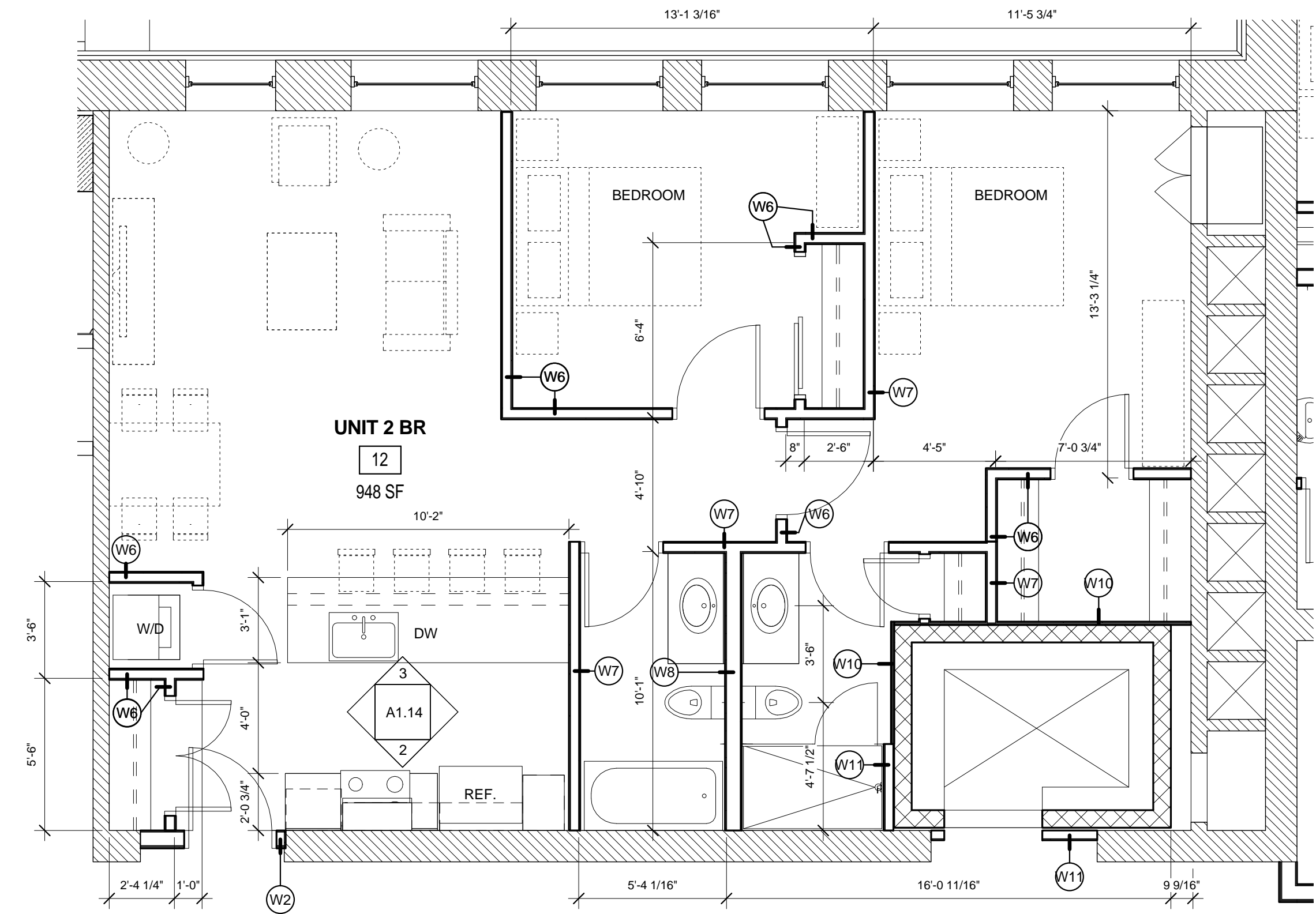


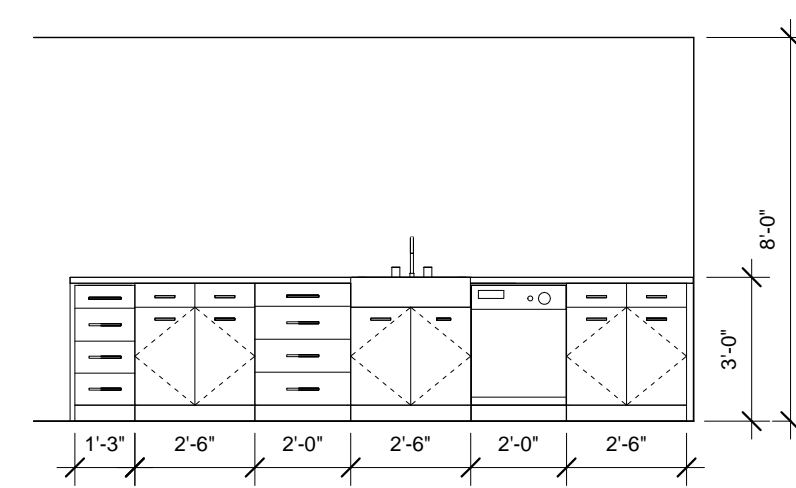
8 | THIRD FLOOR - UNIT 32

1/4" = 1'-0"



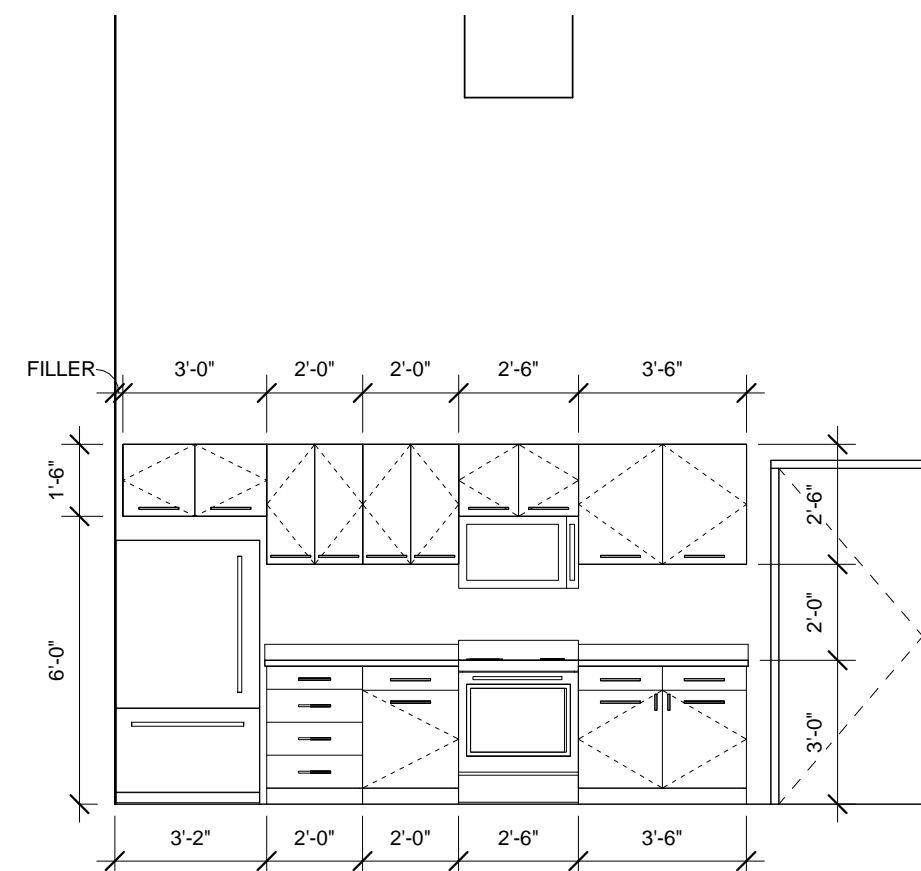
7 | FIRST FLOOR - UNIT 12

1/4" = 1'-0"



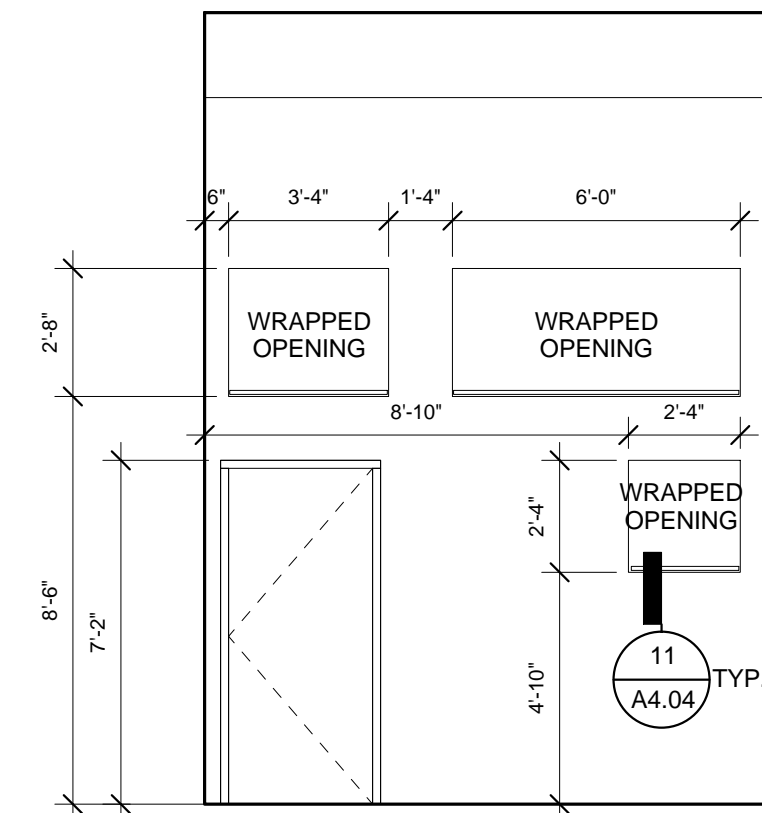
6 | UNIT X2 - KITCHEN ELEV. C

1/4" = 1'-0"



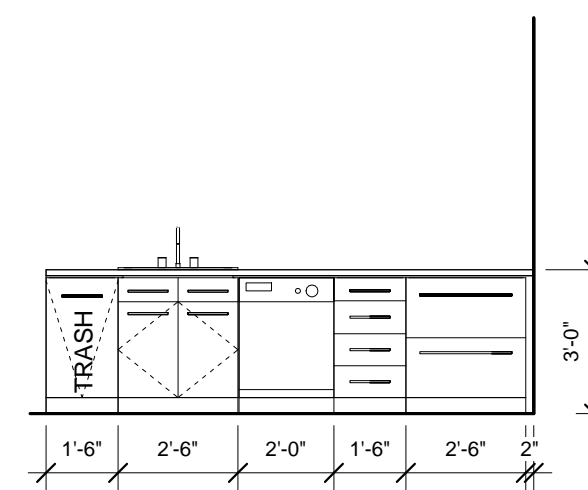
5 | UNIT X2 - KITCHEN ELEV. D

1/4" = 1'-0"



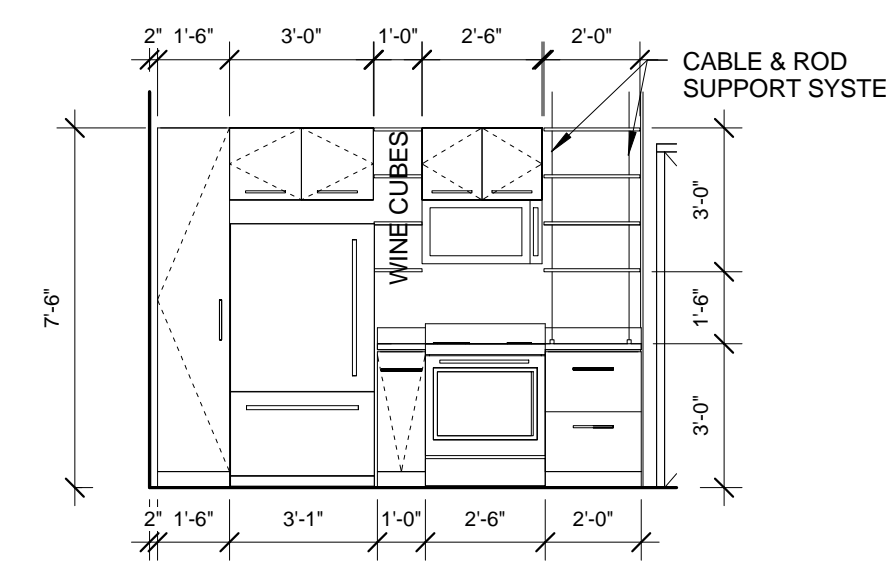
4 | TYP. BEDROOM WALL ELEV.

1/4" = 1'-0"



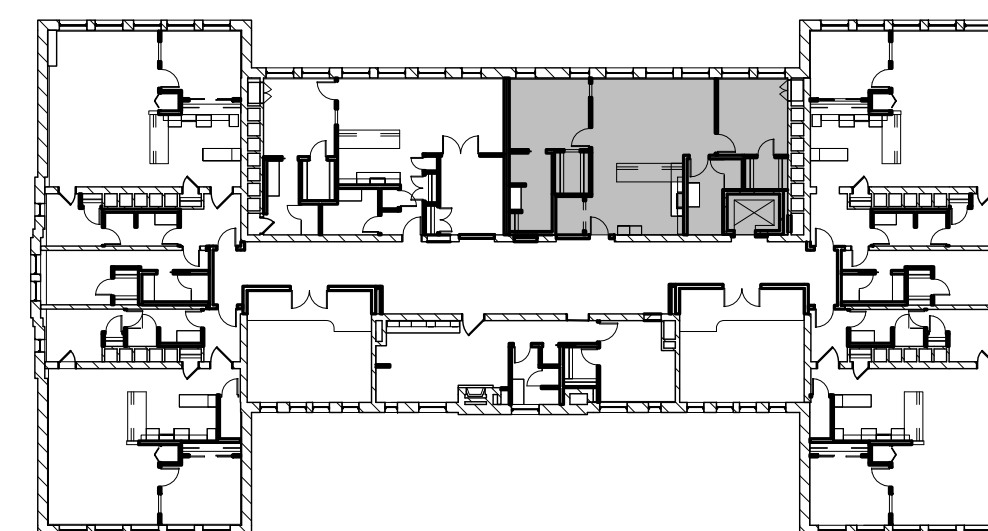
3 | UNIT X2 - KITCHEN ELEV. B

1/4" = 1'-0"



2 | UNIT X2 - KITCHEN ELEV. A

1/4" = 1'-0"

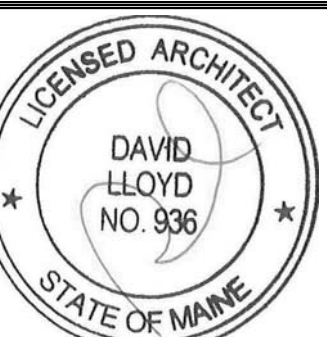


1 | KEY PLAN

1/32" = 1'-0"

CASEWORK GENERAL NOTES

1. ALL UPPERS ARE TO BE 14" DEEP, U.N.O.
2. ALL FULL HEIGHT UTILITY CABINETS ARE TO MATCH BASE CABINET DEPTH, U.N.O.
3. OPEN SHELVES, TYP. SHELVES SUPPORTED BY CABLE AND ROD SYSTEM TO CEILING ABOVE AND COUNTER BELOW, BASIS OF DESIGN; B&N INDUSTRIES - CABLE AND ROD SYSTEM. PROVIDE BLOCKING AS NECESSARY TO EXG STRUCTURE AT CEILING AND AT WALL AND AS RECOMMENDED BY MANF.



Developers  
Collaborative  
17 Chestnut Street  
Portland, ME 04101

Consultant:

ARCHETYPE  
architects  
48 Union Wharf Portland, Maine 04101  
(207) 772-6022 ARCHETYPE@ARCHETYPEA.COM

Architect:

Project:  
NATHAN CLIFFORD  
SCHOOL  
REDEVELOPMENT  
180 Falmouth Street Portland, Maine

Revisions:

Date: 15 JAN 2014  
Scale: As indicated  
TYP. UNITS - X2

A1.14