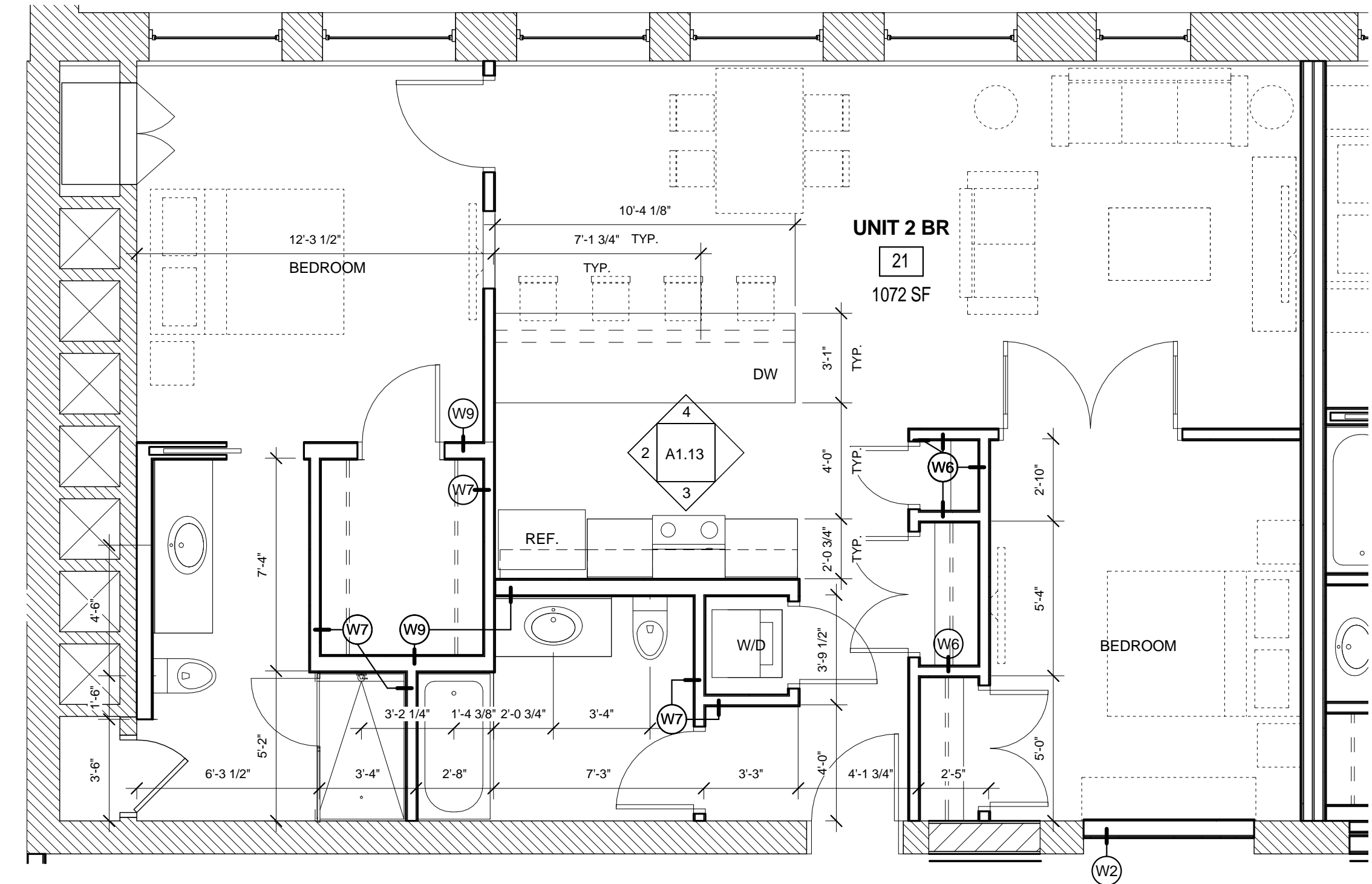


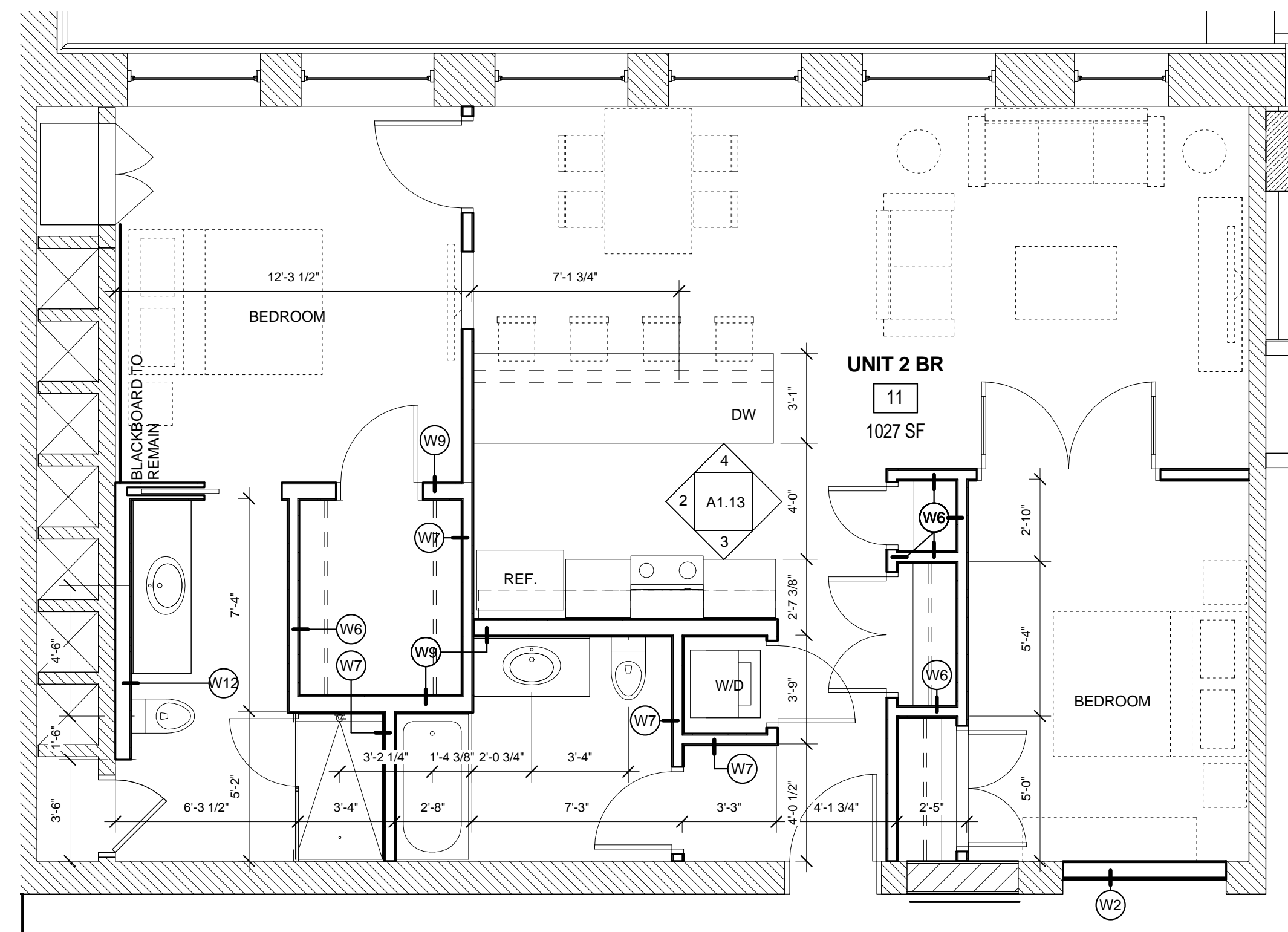
7 | THIRD FLOOR - UNIT 31

1/4" = 1'-0" 0 1'-0" 2'-0" 4'-0" 8'-0"



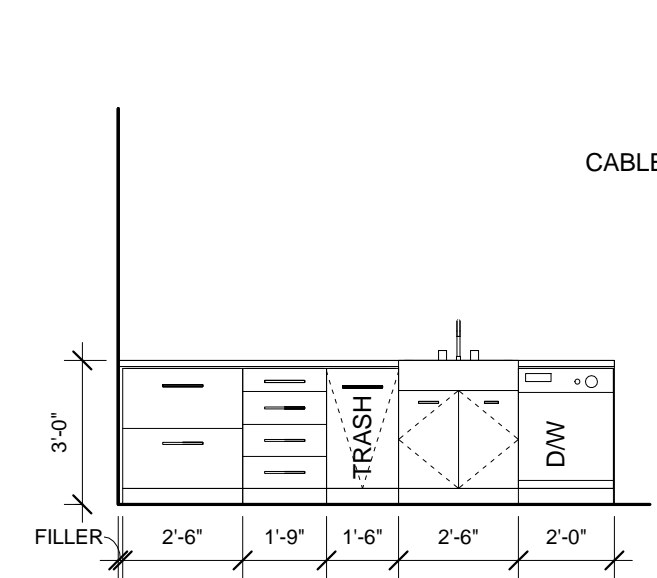
6 | SECOND FLOOR - UNIT 21

1/4" = 1'-0" 0 1'-0" 2'-0" 4'-0" 8'-0"



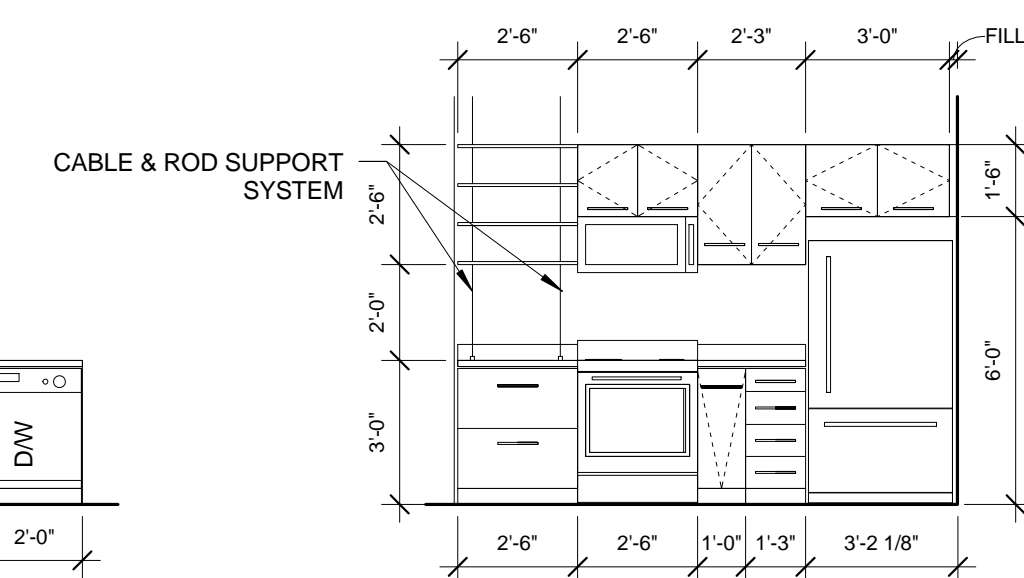
5 | FIRST FLOOR - UNIT 11

1/4" = 1'-0" 0 1'-0" 2'-0" 4'-0" 8'-0"



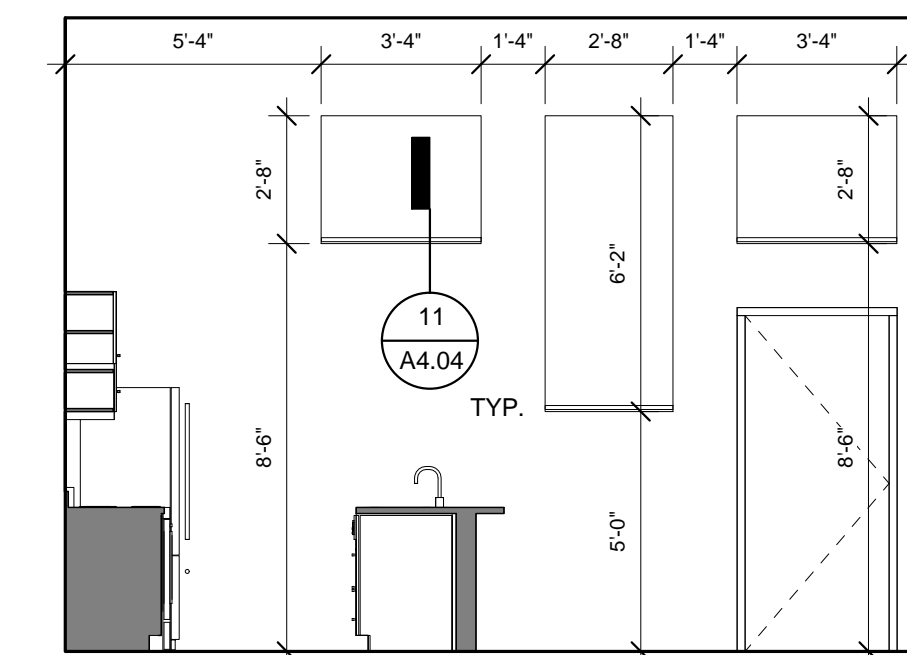
4 | UNIT X1 - KITCHEN ELEV. B

1/4" = 1'-0" 0 1'-0" 2'-0" 4'-0" 8'-0"



3 | UNIT X1 - KITCHEN ELEV. A

1/4" = 1'-0" 0 1'-0" 2'-0" 4'-0" 8'-0"

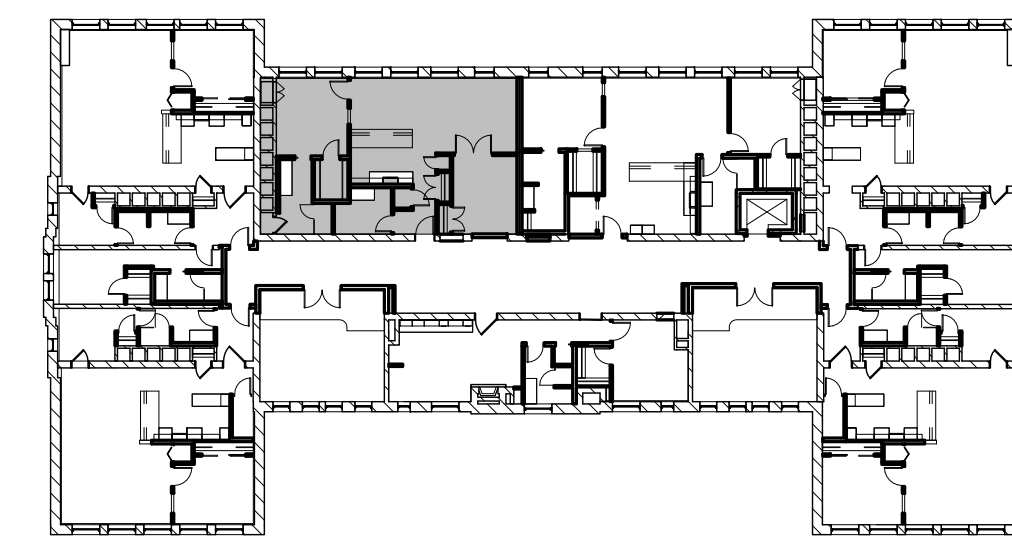


2 | UNIT X1 - KITCHEN ELEV. C

1/4" = 1'-0" 0 1'-0" 2'-0" 4'-0" 8'-0"

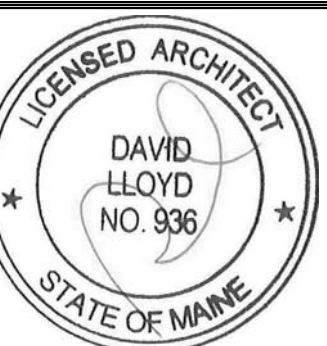
CASEWORK GENERAL NOTES

1. ALL UPpers ARE TO BE 14" DEEP, U.N.O.
2. ALL FULL HEIGHT UTILITY CABINETS ARE TO MATCH BASE CABINET DEPTH, U.N.O.
3. OPEN SHELVES, TYP. SHELVES SUPPORTED BY CABLE AND ROD SYSTEM TO CEILING ABOVE AND COUNTER BELOW. BASIS OF DESIGN: B&N INDUSTRIES - CABLE AND ROD SYSTEM. PROVIDE BLOCKING AS NECESSARY TO EXG STRUCTURE AT CEILING AND AT WALL AND AS RECOMMENDED BY MANF.



1 | KEY PLAN

1/32" = 1'-0"



Prepared For:
Developers Collaborative
17 Chestnut Street
Portland, ME 04101

Consultant:
ARCHETYPE architects
48 Union Wharf Portland, Maine 04101
(207) 772-6022 ARCHETYPE@ARCHETYPE.COM

Project:
NATHAN CLIFFORD SCHOOL REDEVELOPMENT
180 Falmouth Street Portland, Maine

Revisions:

Scale: As indicated
TYP. UNITS - X1

Date: 15 JAN 2014

A1.13