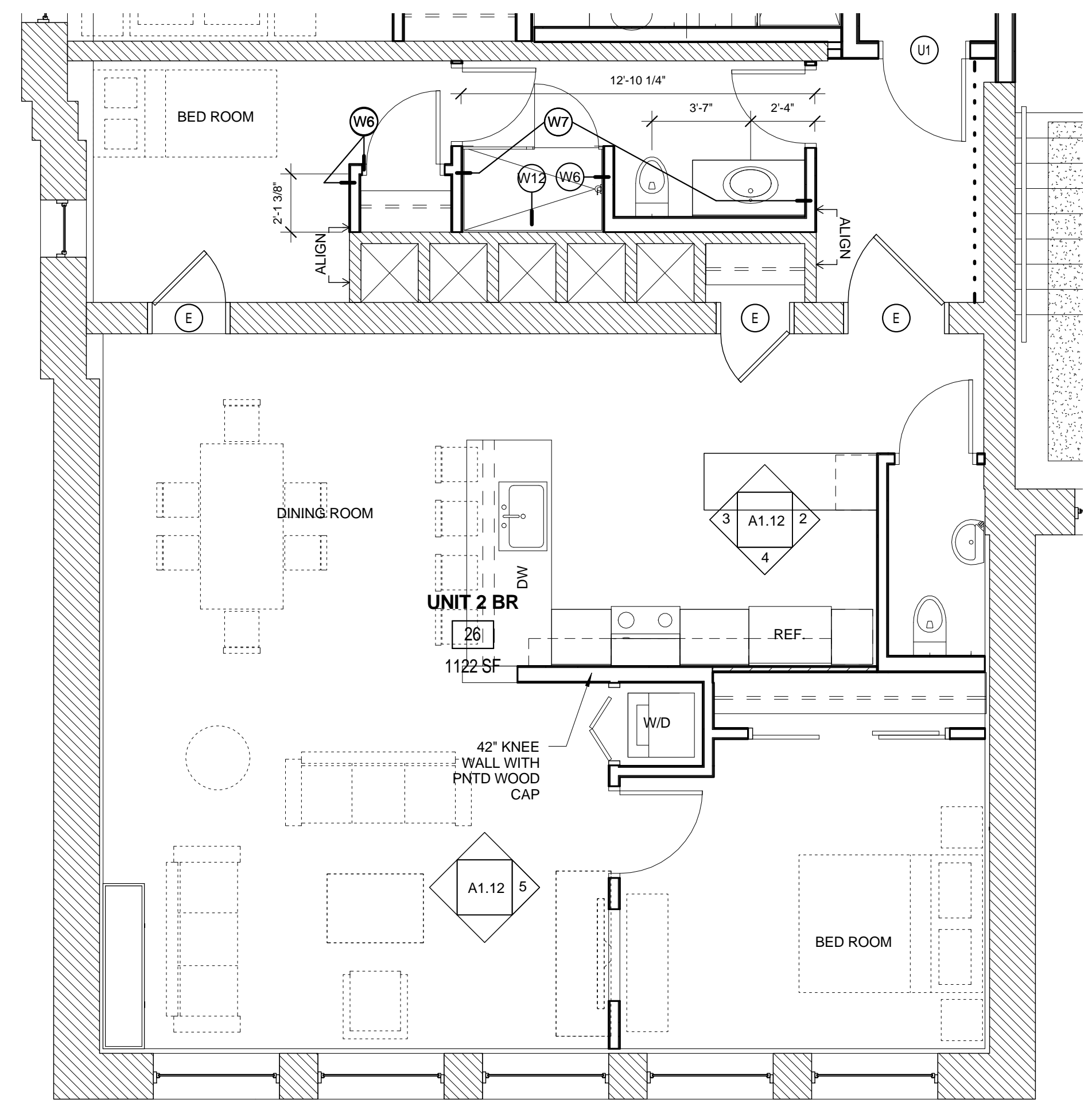
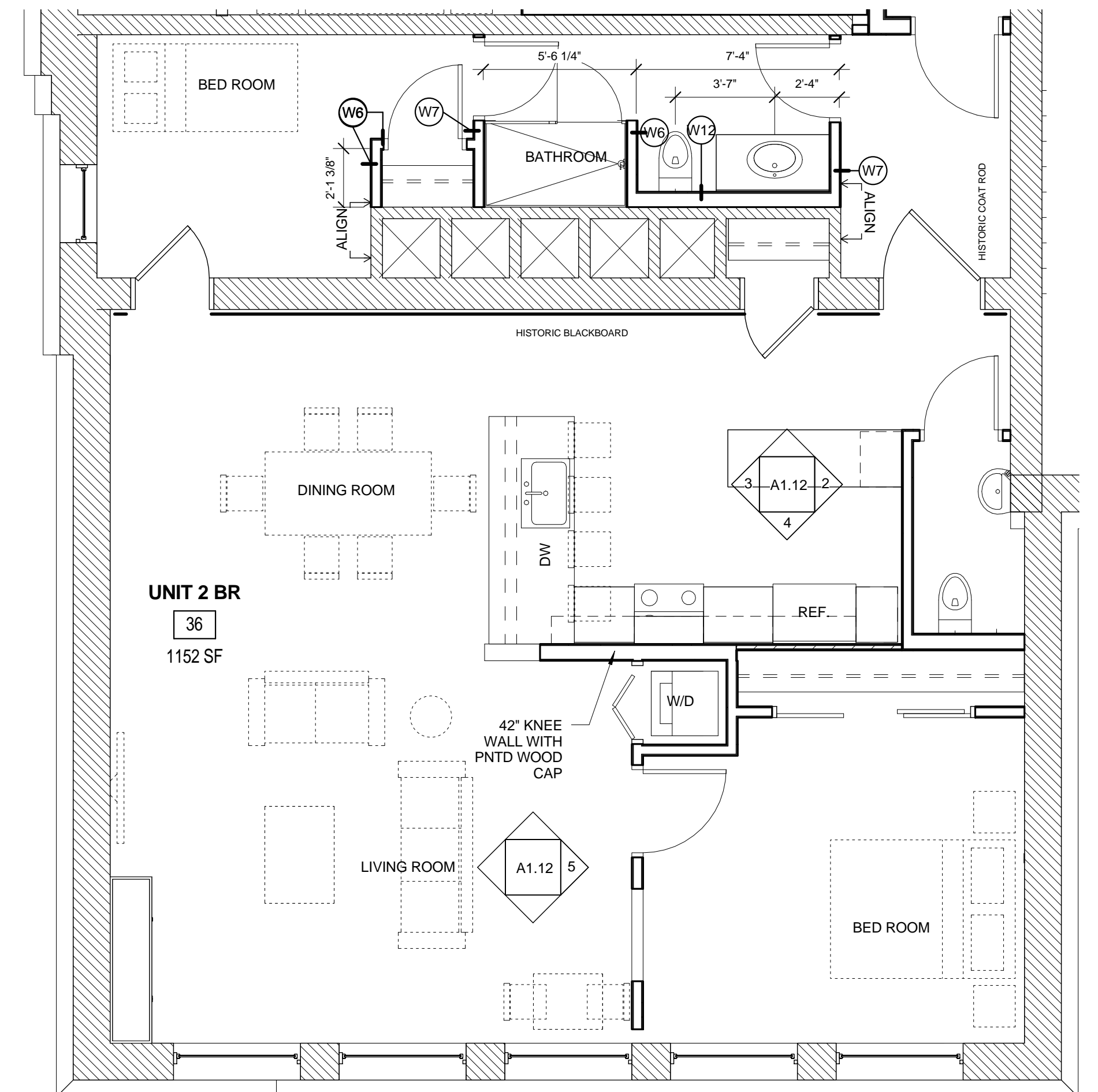


9 | FIRST FLOOR - UNIT 17
 1/4" = 1'-0"



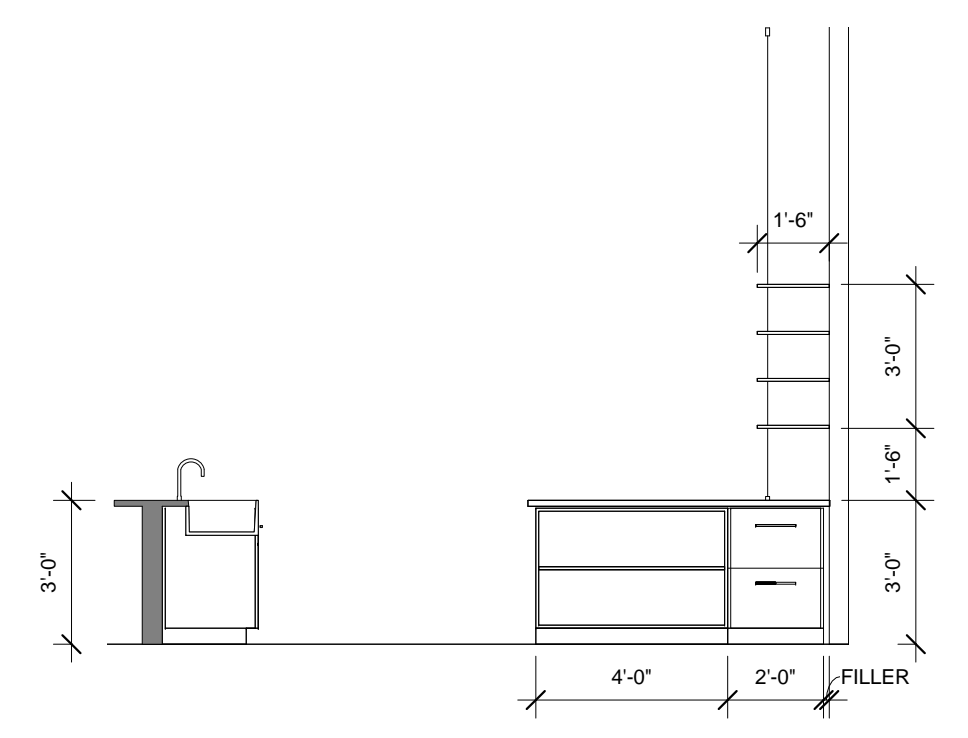
8 | SECOND FLOOR - UNIT 26
 1/4" = 1'-0"



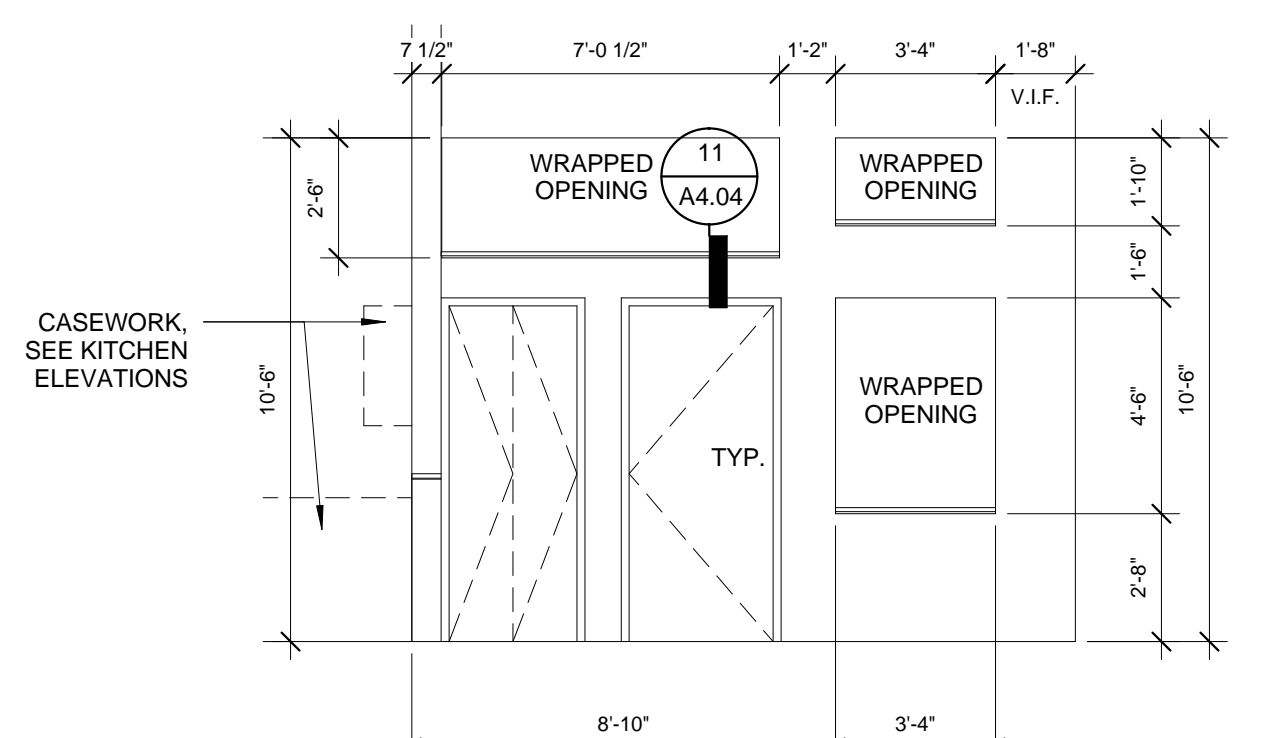
7 | THIRD FLOOR - UNIT 36
 1/4" = 1'-0"

CASEWORK GENERAL NOTES

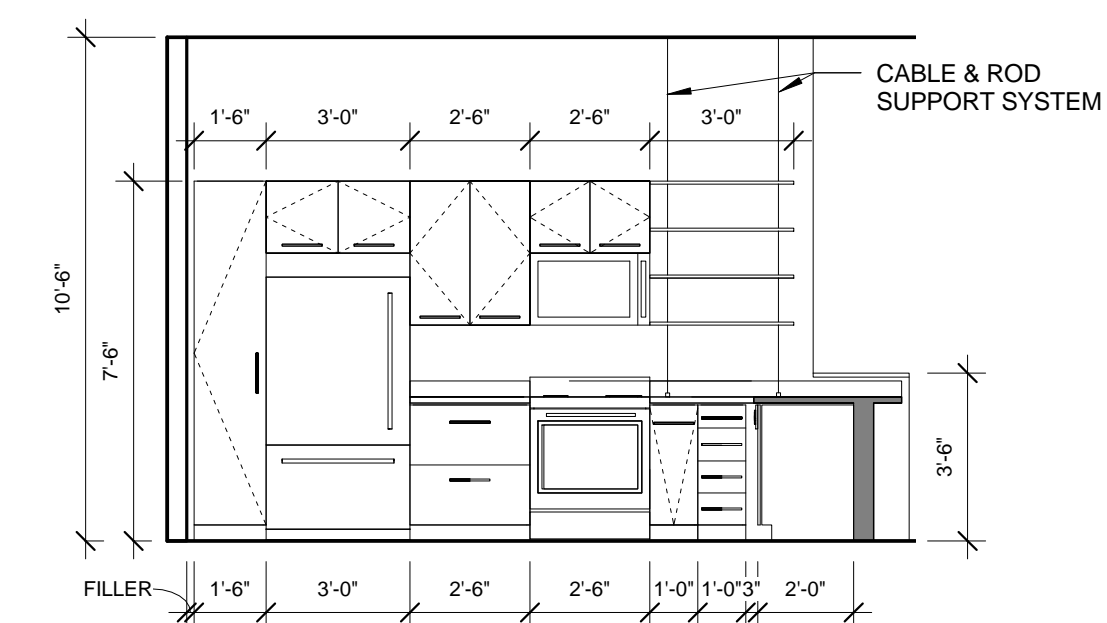
1. ALL UPpers ARE TO BE 14" DEEP, U.N.O.
2. ALL FULL HEIGHT UTILITY CABINETS ARE TO MATCH BASE CABINET DEPTH, U.N.O.
3. OPEN SHELVES, TYP. SHELVES SUPPORTED BY CABLE AND ROD SYSTEM TO CEILING ABOVE AND COUNTER BELOW. BASIS OF DESIGN; B&N INDUSTRIES - CABLE AND ROD SYSTEM, PROVIDE BLOCKING AS NECESSARY TO EXG STRUCTURE AT CEILING AND AT WALL AND AS RECOMMENDED BY MANF.



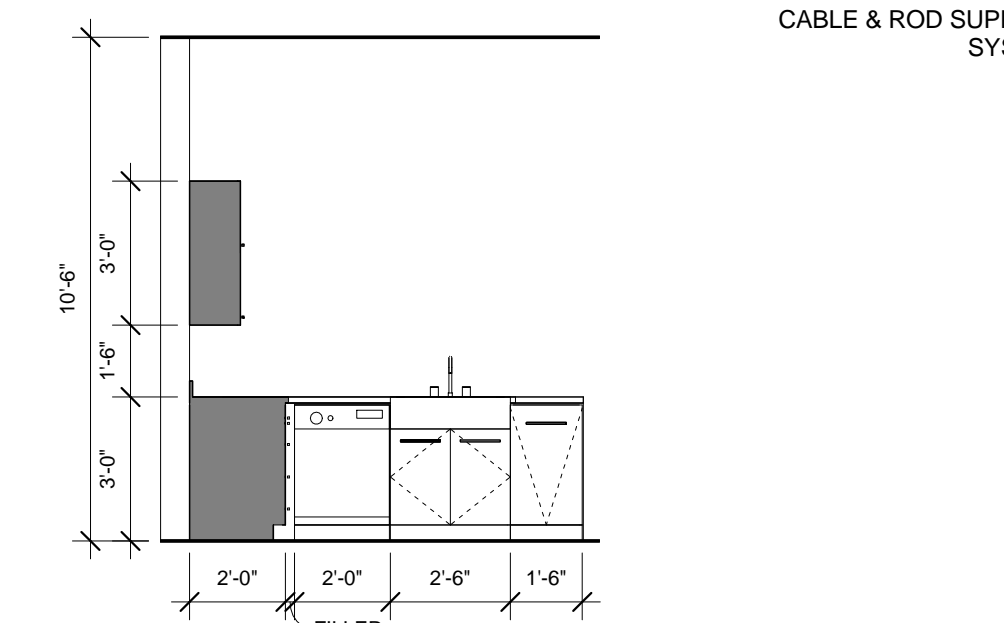
6 | S. CORNER UNIT - ELEVATION D
 1/4" = 1'-0"



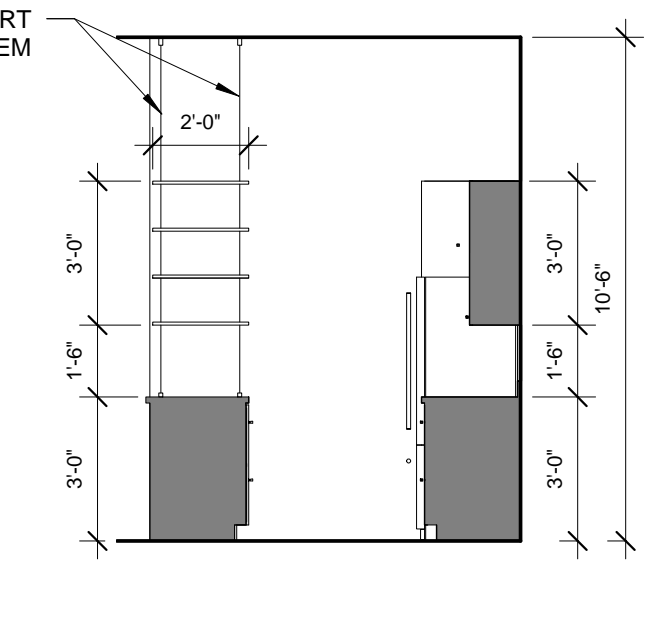
5 | CORNER UNIT TYPICAL ELEVATION
 1/4" = 1'-0"



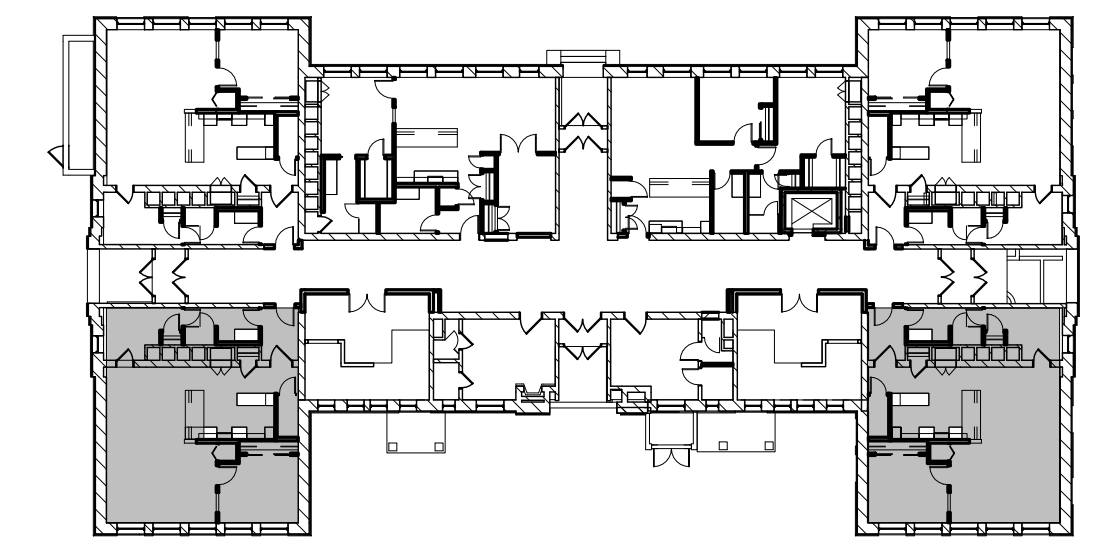
4 | S. CORNER UNIT - KITCHEN ELEV. A
 1/4" = 1'-0"



3 | S. CORNER UNIT - KITCHEN ELEV. B
 1/4" = 1'-0"



2 | S. CORNER UNIT - KITCHEN ELEV. C
 1/4" = 1'-0"



1 | KEY PLAN
 1/32" = 1'-0"