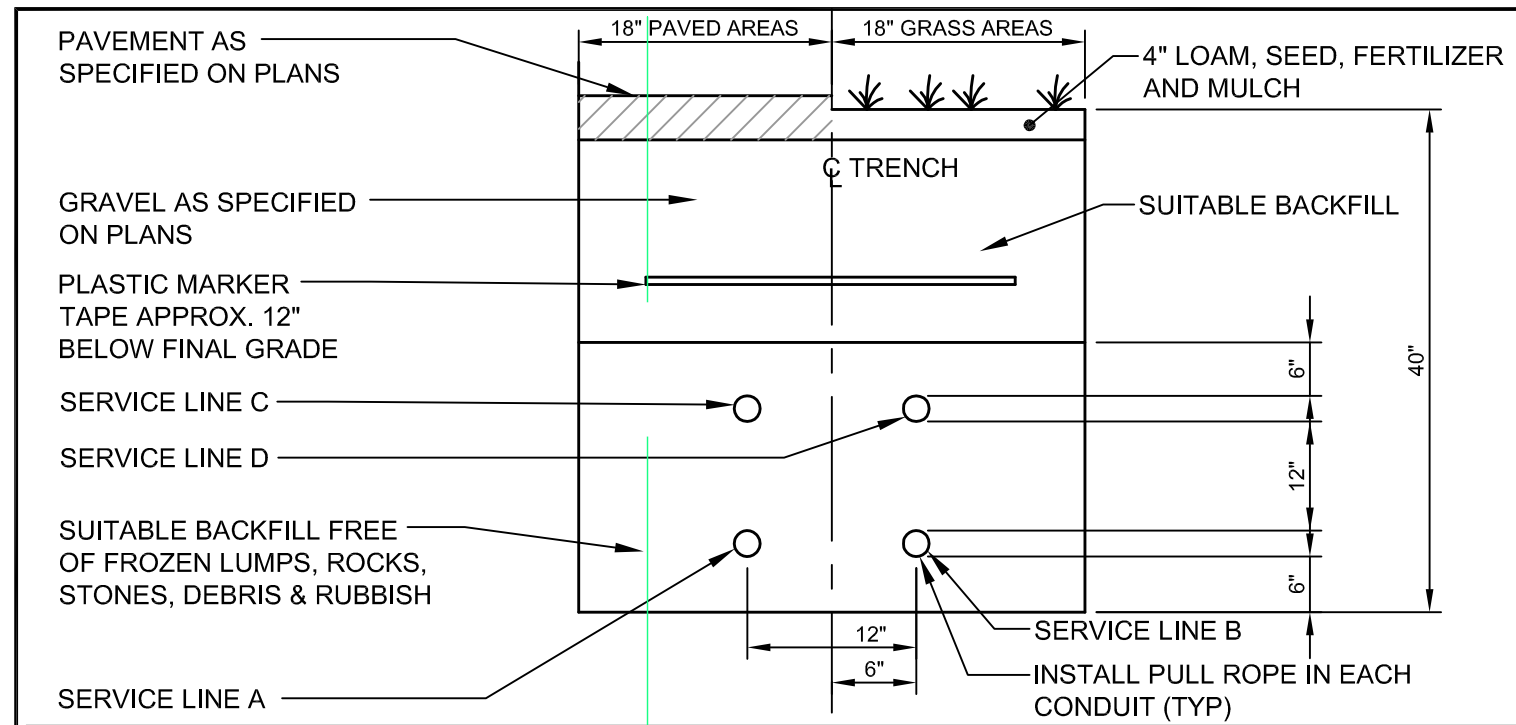


STANDARD CROSSWALK MARKINGS
POSTED SPEED ≤ 35 mph

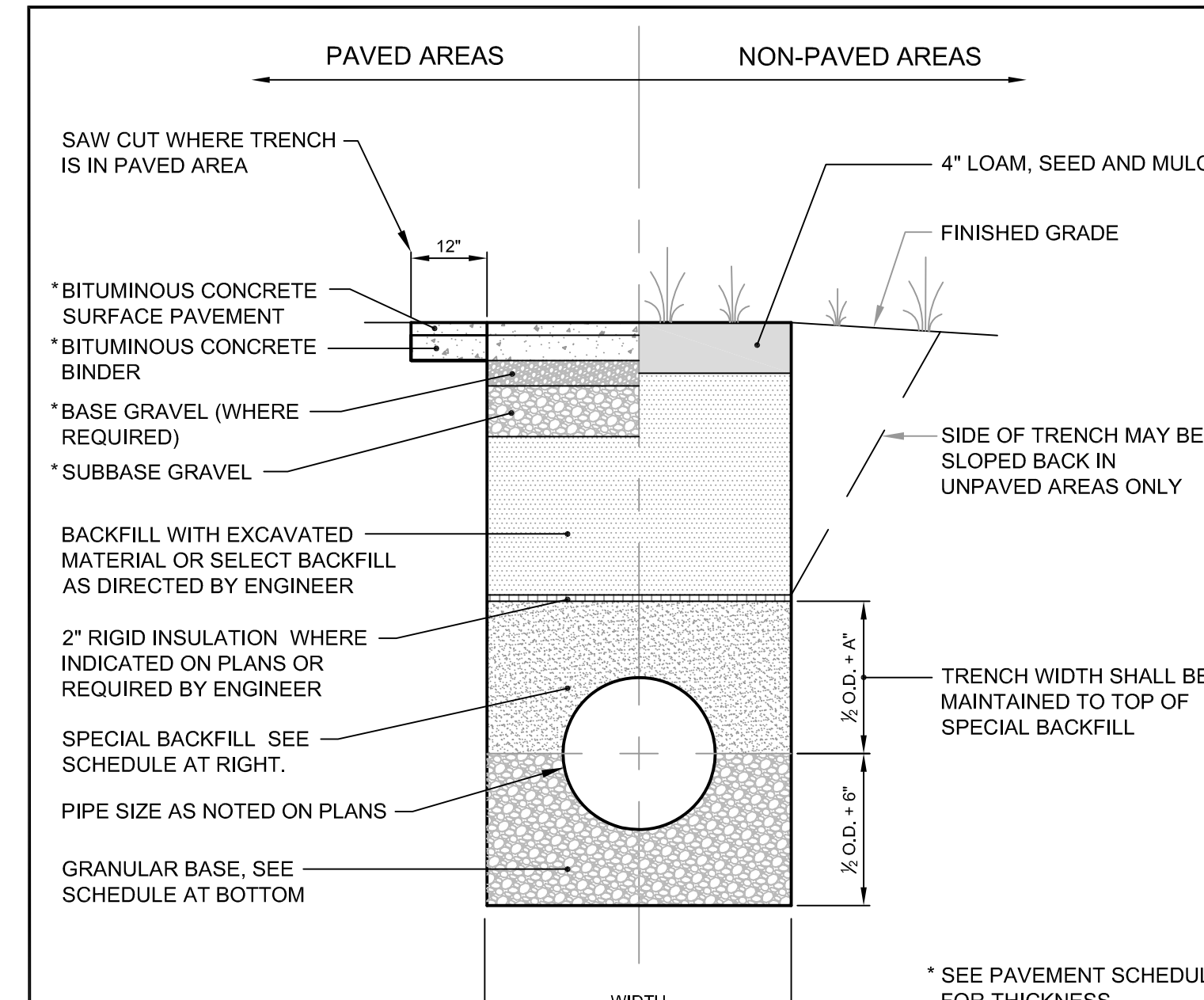
A TYPICAL CROSSWALK MARKINGS
N.T.S.



SERVICE	CONDUIT SIZE	CONDUIT TYPE		UTILITY	REMARKS
		GRASS AREAS	PAVED AREAS		
A	2-5"	SCHEDULE 40 PVC ELECTRICAL GRADE	RIGID GALVANIZED STEEL, ASTM A120	POWER	SEE NOTE
B	2-4"	SCHEDULE 40 PVC	RIGID GALVANIZED STEEL, ASTM A120	TELEPHONE	SEE NOTE
C	2-4"	SCHEDULE 40 PVC	RIGID GALVANIZED STEEL, ASTM A120	COMMUNICATION	SEE NOTE
D	2-4"	SCHEDULE 40 PVC	RIGID GALVANIZED STEEL, ASTM A120	SPARES	SEE NOTE

NOTE: ONE CONDUIT CAPPED FOR SPARE. PROVIDE GALVANIZED STEEL LONG SWEEP AT RISER POLE AND EXTEND GALVANIZED CONDUIT TO 10' ABOVE GRADE AT POLE WITH STAND-OFF BRACKETS. COORDINATE WITH ELECTRICAL SITE PLANS BY BARTLETT DESIGN.

D UTILITY TRENCH - PRIMARY ELECTRIC, TELEPHONE & COMMUNICATIONS
N.T.S.

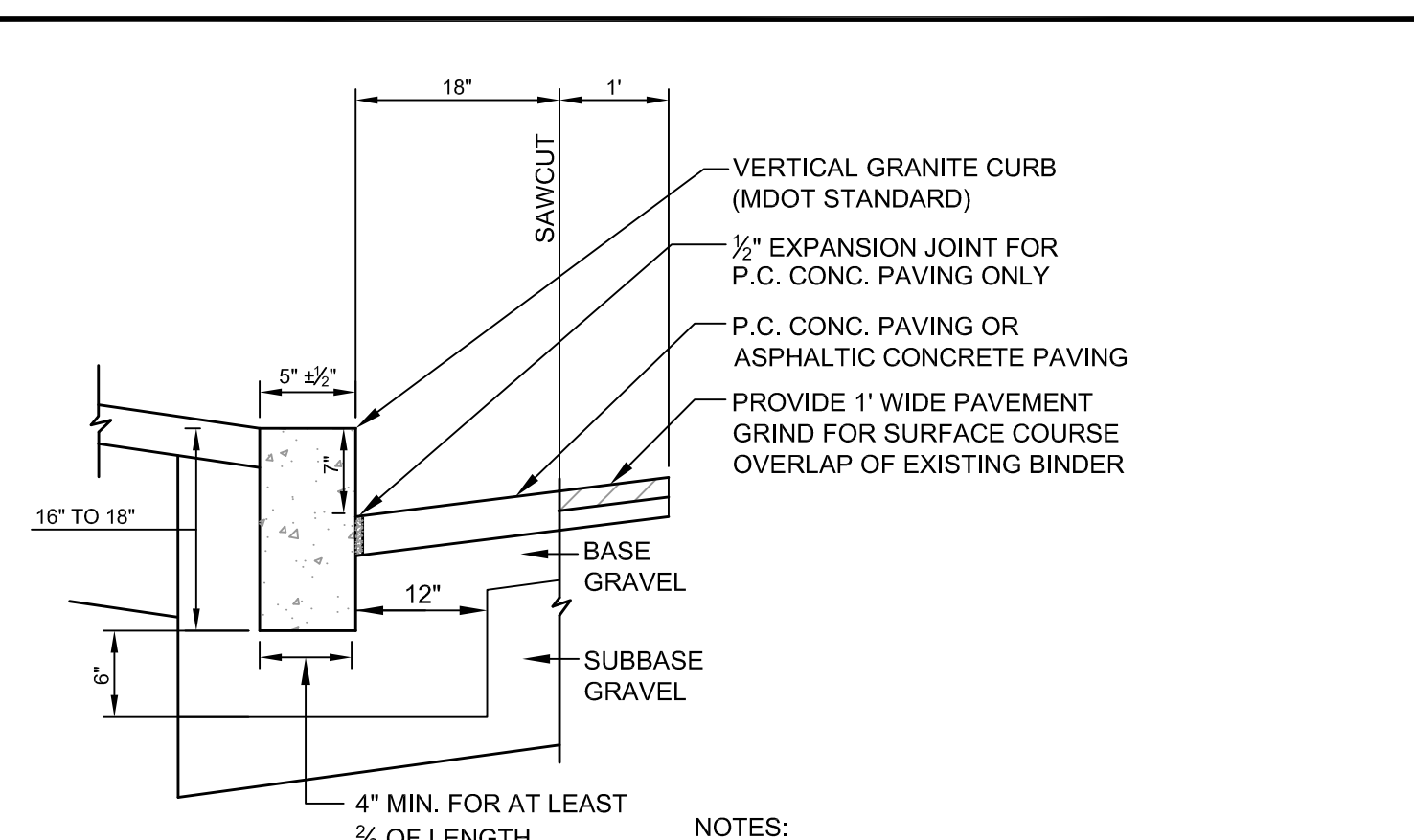


NOTE: SERVICES TO BE SIMILAR EXCEPT MINIMUM PAY WIDTH IS 2 1/2 FT. WHERE APPLICABLE

SCHEDULE OF BASE BACKFILL				
TYPE OF PIPE	BEDDING MATERIAL	SPECIAL BACKFILL	SPECIAL BACKFILL COVER "A" (IN)	SELECT BACKFILL
CONCRETE	GRANULAR AASHTO M145 49-A-3 OR BETTER	GRANULAR AASHTO M145 49-A-3 OR BETTER	12	GRANULAR AASHTO M145 49-A-3 OR BETTER
PVC	3/4" CRUSHED STONE	GRANULAR AASHTO M145 49-A-3 OR BETTER	6	GRANULAR AASHTO M145 49-A-3 OR BETTER
CMP	3/4" CRUSHED STONE	GRANULAR AASHTO M145 49-A-3 OR BETTER	6	GRANULAR AASHTO M145 49-A-3 OR BETTER
D.I.	GRANULAR AASHTO M145-49-A-3 OR BETTER	GRANULAR AASHTO M145 49-A-3 OR BETTER	6	GRANULAR AASHTO M145 49-A-3 OR BETTER

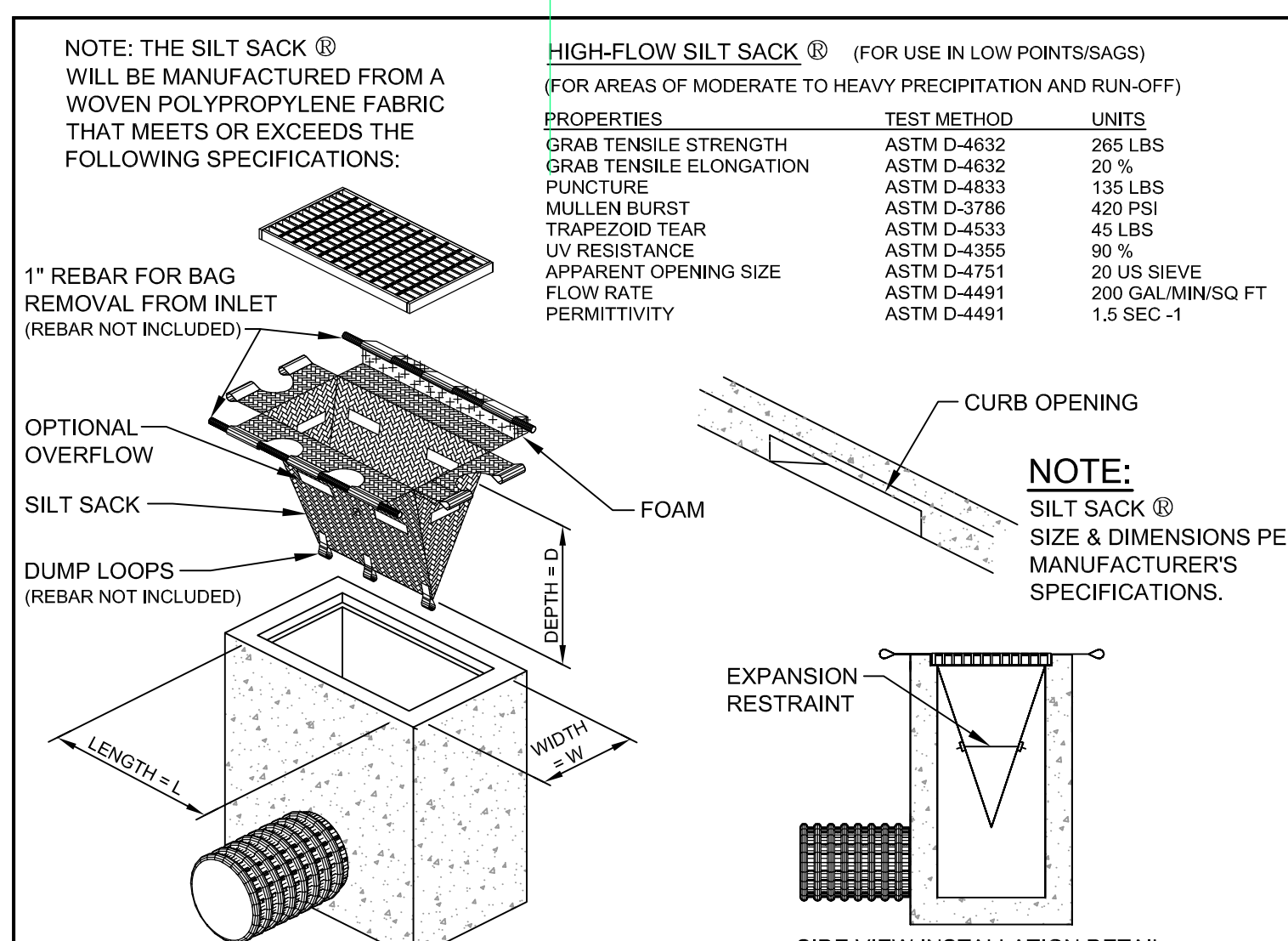
NOTE: BRACING AND SHEETING OR OTHER TRENCH PROTECTION TO BE PROVIDED TO MEET APPLICABLE STATE AND O.S.H.A. SAFETY STANDARDS. ALL SUCH TRENCH PROTECTION TO BE THE RESPONSIBILITY OF THE CONTRACTOR.

G TYPICAL TRENCH DETAIL
N.T.S.

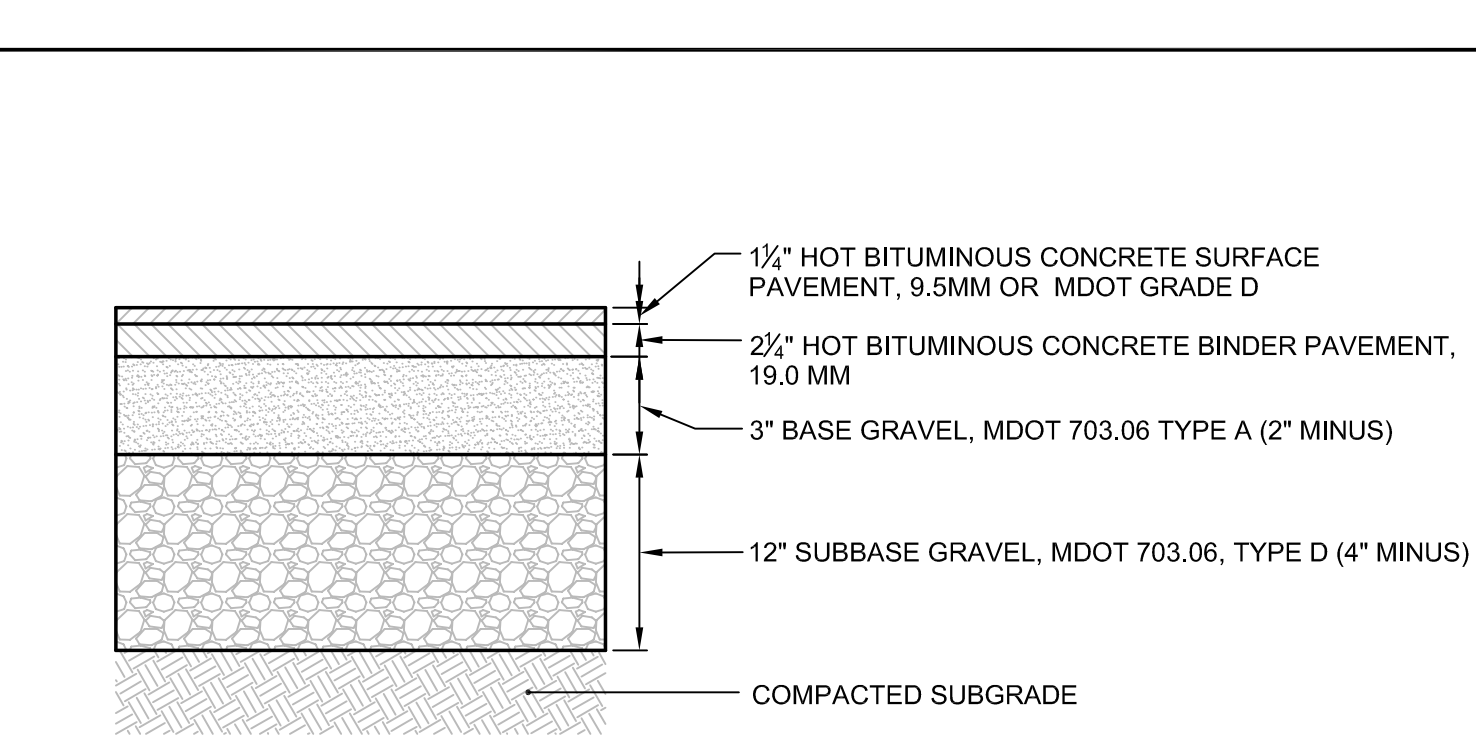


- NOTES:
1. MAXIMUM LENGTH OF STRAIGHT CURB STONES = 8'
 2. MINIMUM LENGTH OF STRAIGHT CURB STONES = 3'
 3. CIRCULAR CURB REQUIRED FOR RADIUS LESS THAN 50'
 4. GROUT OR CALK ALL CURB JOINTS OVER 1/2" IN WIDTH. INSTALL STRIP OF FILTER FABRIC BEHIND EACH CURB JOINT.

B VERTICAL GRANITE CURB
N.T.S.

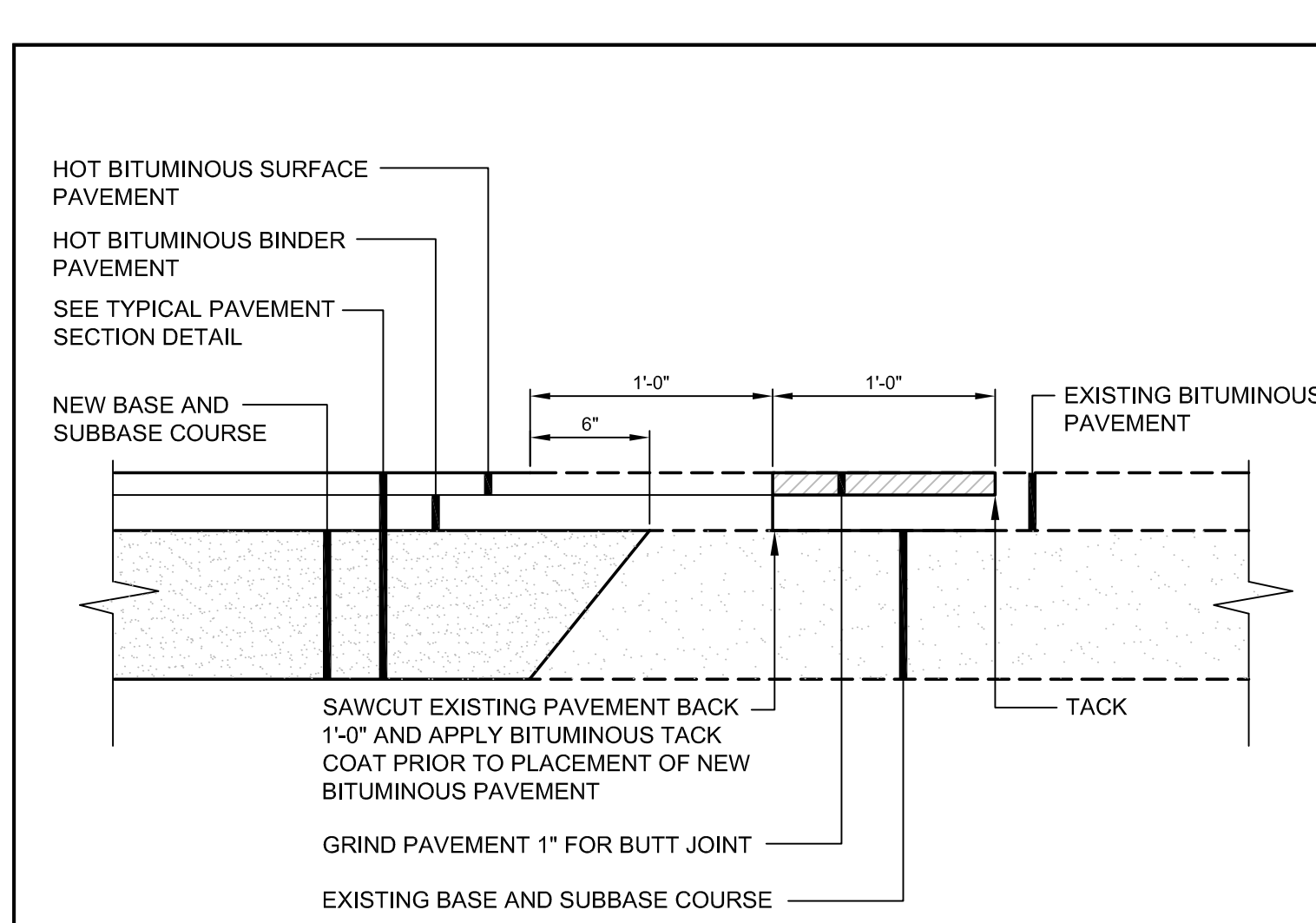


E SILT SACK® DETAIL & SPECIFICATIONS
N.T.S.

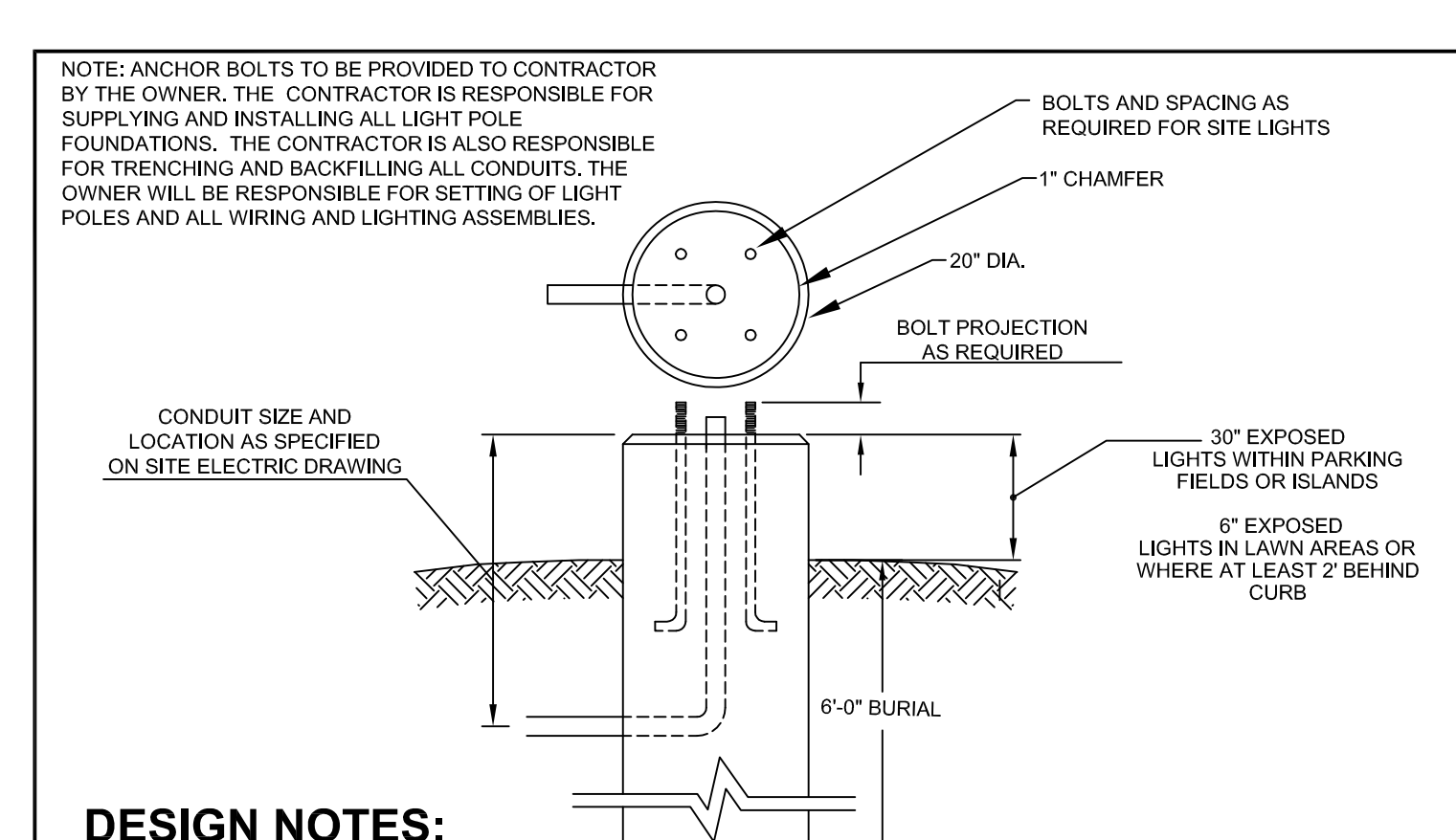


- NOTES:
1. APPLY TACK COAT BETWEEN BINDER AND SURFACE COURSES.
 2. ALL MATERIALS SHALL CONFORM TO MDOT SPECIFICATIONS, LATEST REVISION. COMPACTION OF ALL MATERIALS TO BE IN ACCORDANCE WITH THE SPECIFICATIONS AND THE GEOTECHNICAL REPORT.

C BITUMINOUS CONCRETE PAVEMENT SECTION
N.T.S.

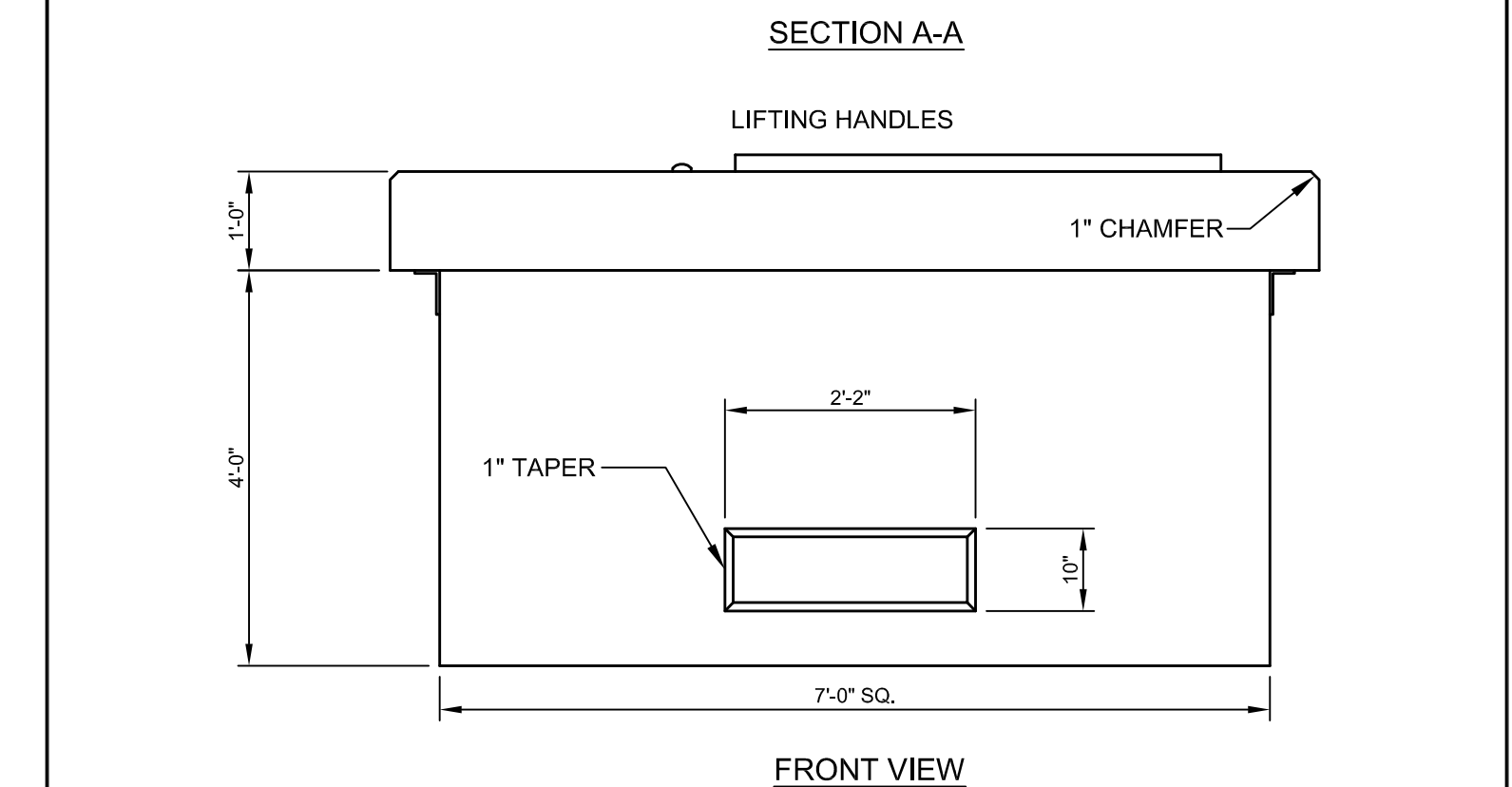
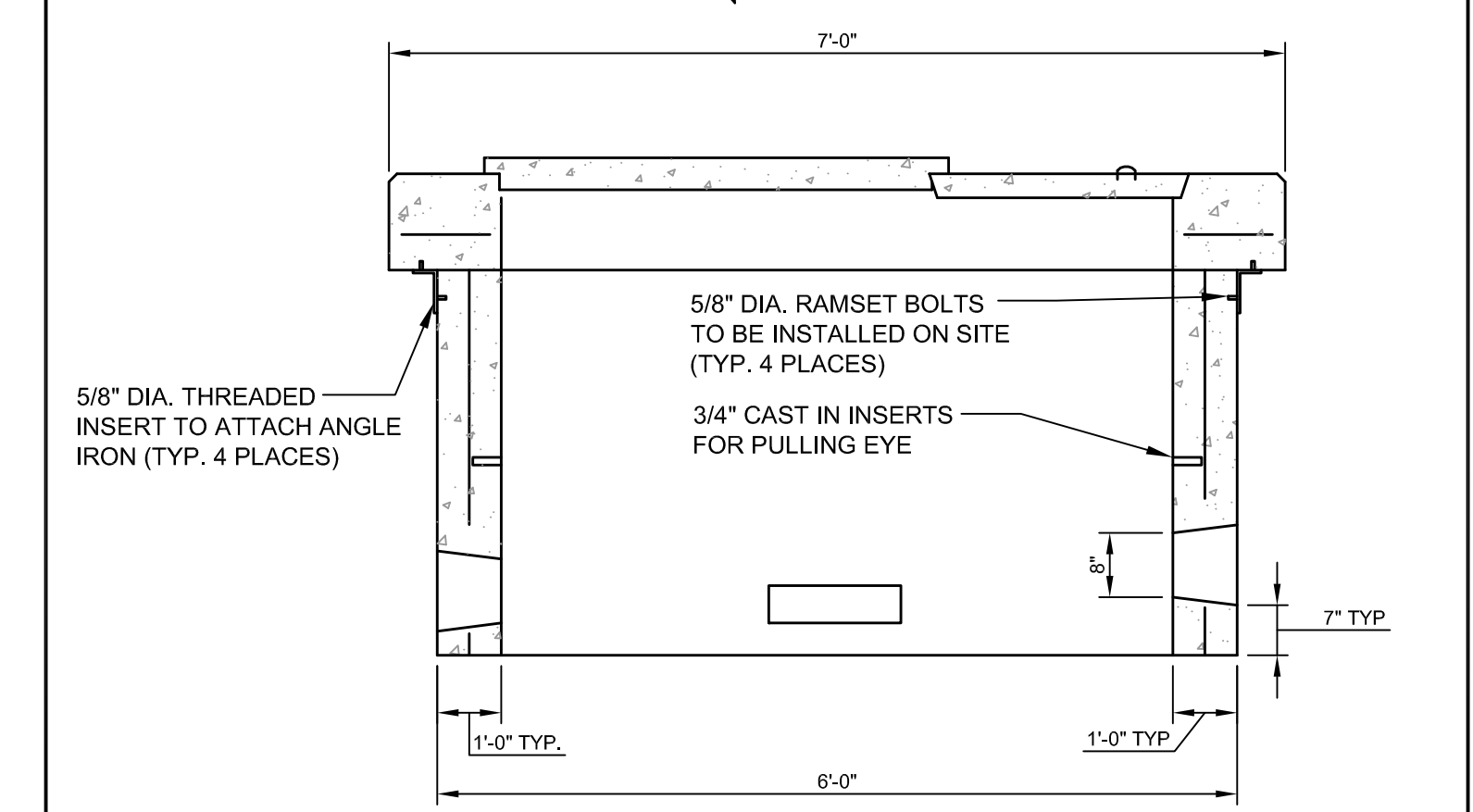
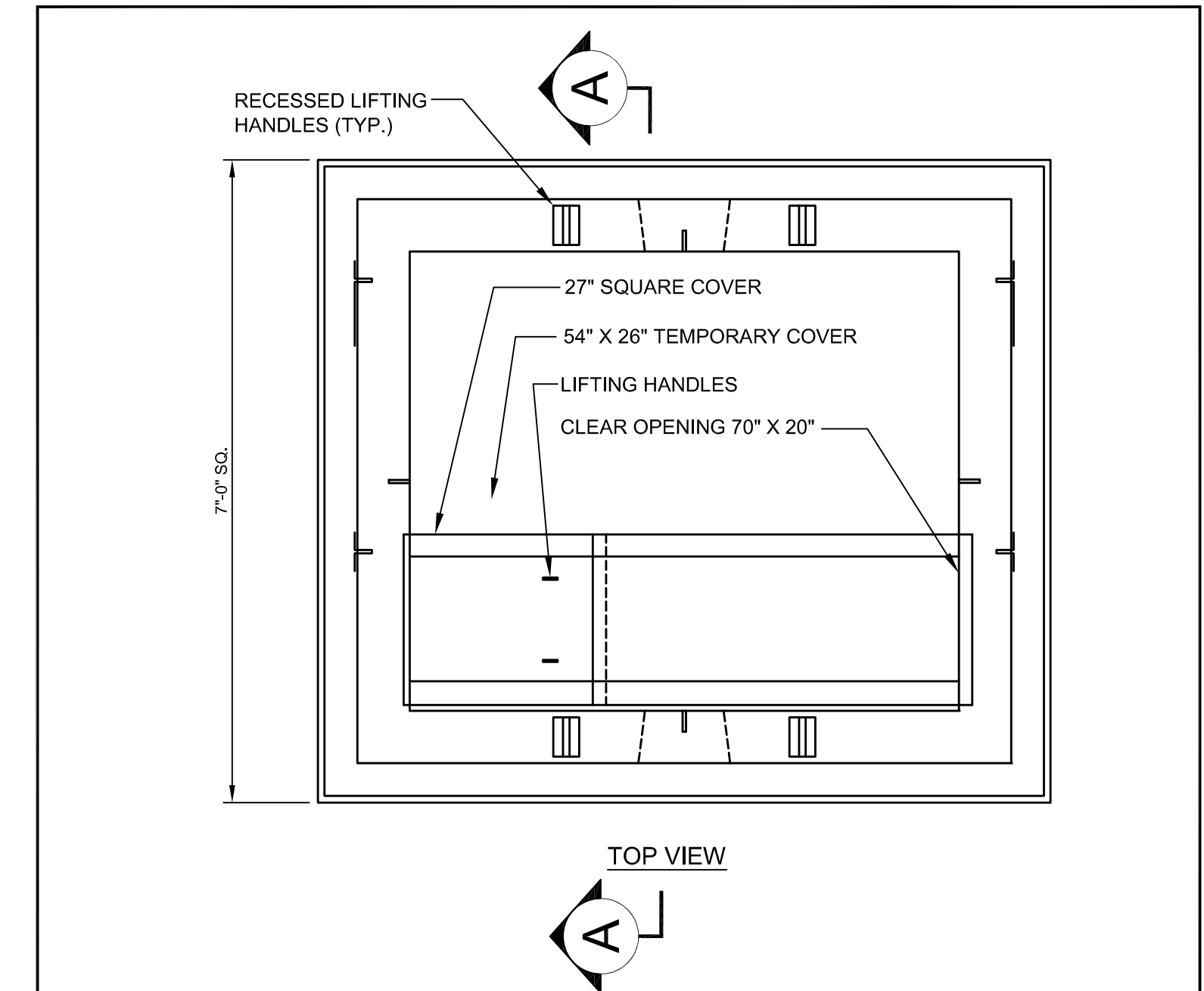


F PAVEMENT SAWCUT DETAIL
N.T.S.



- DESIGN NOTES:**
1. CONCRETE 4,000 PSI AT 28 DAYS
 2. REINFORCING IS AS SPECIFIED. (TYP. 4 - #4 VERTICALLY AND #3 STIRRUPS 12" O.C. HORIZONTALLY)
 3. ANCHOR BOLTS AND GROUNDING AS SPECIFIED AND REQUIRED BY SUPPLIER.
 4. EXPOSED PORTION OF CONCRETE FOUNDATION TO BE PAINTED WITH 2 COATS OF ACRYLIC PAINT. COLOR TO MATCH POLE COLOR.
 5. FOR POLE HEIGHTS EQUAL TO OR LESS THAN 25' TALL.

H 20" ROUND PRECAST CONCRETE LIGHT POLE FOUNDATION
N.T.S.



- DESIGN NOTES:**
1. CONCRETE 4,000 PSI AT 28 DAYS
 2. REINFORCING #4 BARS AT 6" O.C. EACH WAY
 3. DUCT OPENINGS SHOWN ARE TYPICAL AND CAN BE MODIFIED PER REQUEST
 4. CENTRAL MAINE POWER COMPANY SPECIFICATION
 5. TEMPORARY COVER HAS (2) 5/8" THREADED LIFTING INSERTS CAST IN

NOTE: CONFIRM TRANSFORMER PAD SIZES WITH OWNER AND/OR ELECTRICAL SITE PLANS. DIVISION 2 CONTRACTOR IS RESPONSIBLE FOR FURNISHING AND INSTALLING THE TRANSFORMER PAD.

I 7'-0" TRANSFORMER PAD
N.T.S.

Prepared For: DEVELOPERS COLLABORATIVE PREDEVELOPMENT L.L.C.	Project: NATHAN CLIFFORD SCHOOL REDEVELOPMENT	Revisions: 12.20.13 - RELEASED FOR BIDS 11.19.13 - FINAL PLAN SUBMISSION 11.12.13 - FINAL PLAN SUBMISSION 11.05.13 - FINAL PLAN SUBMISSION 10.16.13 - REV. PLAN SUBMISSION 10.01.13 - PRELIMINARY PLAN SUBMISSION TO CITY
17 CHESTNUT STREET PORTLAND, ME 04101	FALMOUTH STREET PORTLAND, MAINE	Date: OCT. 2012
Architect: ARCHETYPE Architects 48 Union Wharf Portland, Maine 04101 (207) 772-6022 Fax (207) 772-4056	Scale: N.T.S.	C-7.0