

FIG. 302.3 - OPENINGS IN FLOOR OR GROUND SURFACES

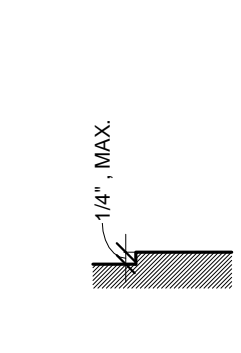


FIG. 303.2 - VERTICAL CHANGES IN LEVEL

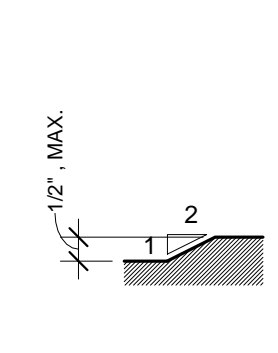


FIG. 303.3 - BEVELED CHANGES IN LEVEL

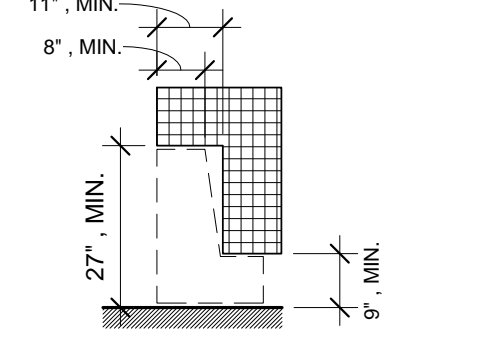


FIG. 306.3 - KNEE CLEARANCE

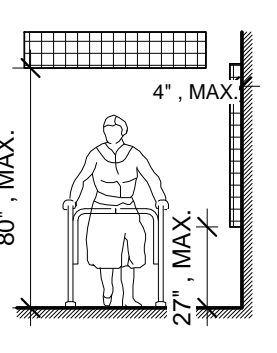


FIG. 307.2 - LIMITS OF PROTRUDING OBJECTS

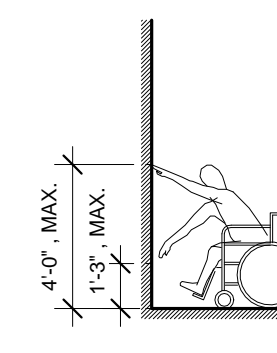


FIG. 308.2.1 - UNOBSTRUCTED FORWARD REACH

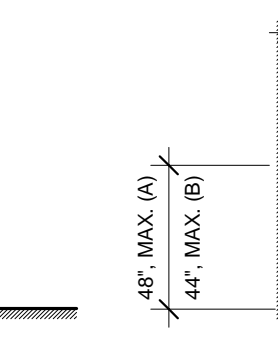


FIG. 308.2.2 - OBSTRUCTED HIGH FORWARD REACH

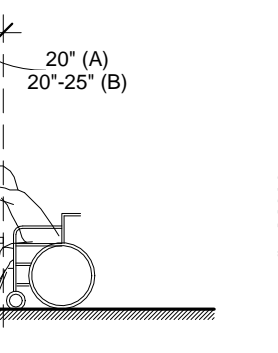


FIG. 308.3.1 - UNOBSTRUCTED SIDE REACH

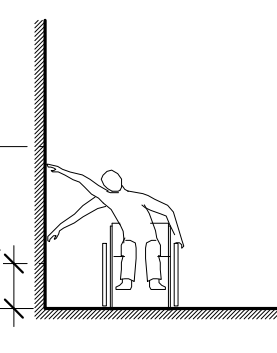
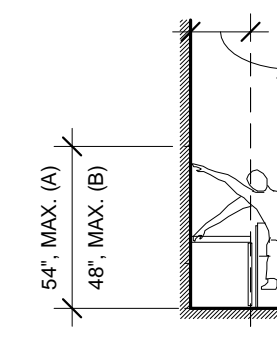


FIG. 308.3.2 - OBSTRUCTED SIDE REACH



FIRE EXTINGUISHING CABINET MOUNTING HEIGHT

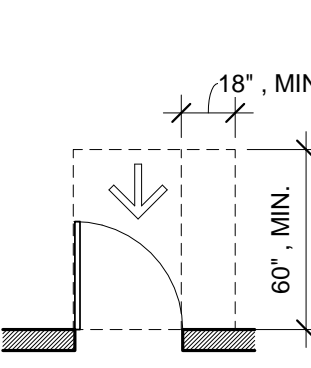
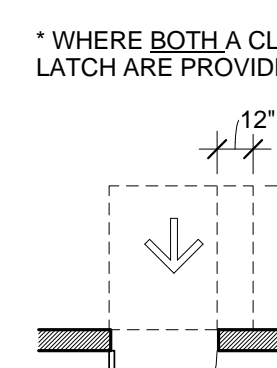
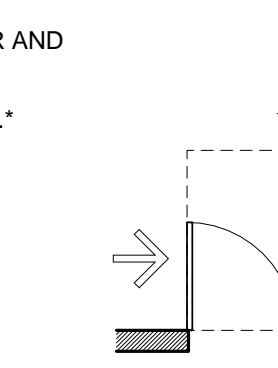


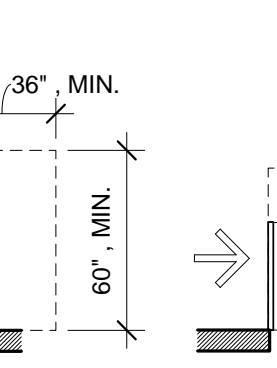
FIG. 404.2.1 - MANEUVERING CLEARANCE AT SWING DOOR



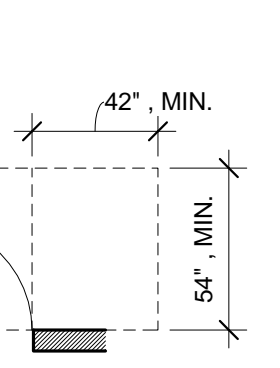
(A) FRONT APPROACH, PULL SIDE



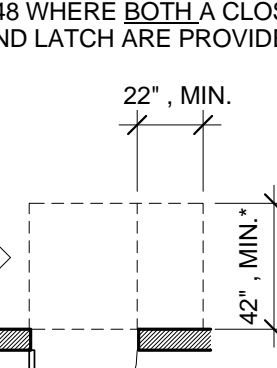
(B) FRONT APPROACH, PUSH SIDE



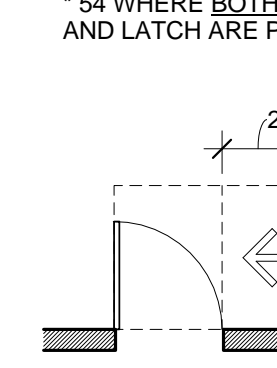
(C) HINGE APPROACH, PULL SIDE



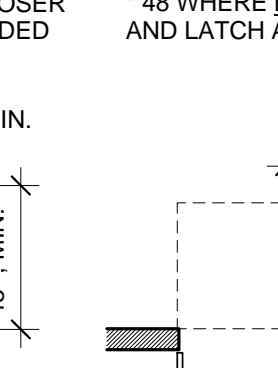
(D) HINGE APPROACH, PUSH SIDE



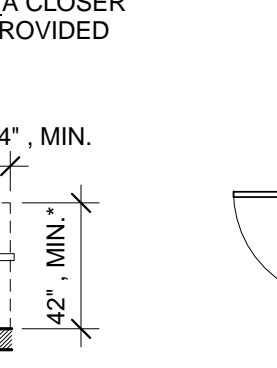
(E) HINGE APPROACH, PULL SIDE



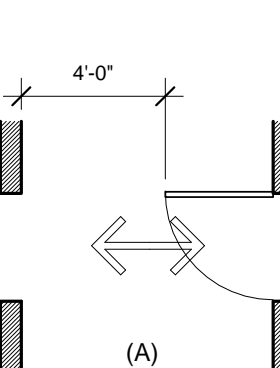
(F) LATCH APPROACH, PUSH SIDE



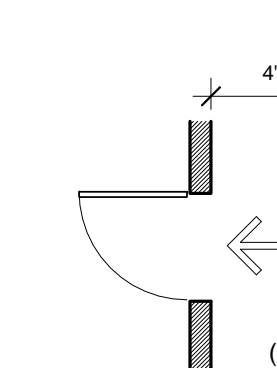
(G) LATCH APPROACH, PULL SIDE



* 48 WHERE BOTH A CLOSER AND LATCH ARE PROVIDED



* 54 WHERE BOTH A CLOSER AND LATCH ARE PROVIDED



* 48 WHERE BOTH A CLOSER AND LATCH ARE PROVIDED

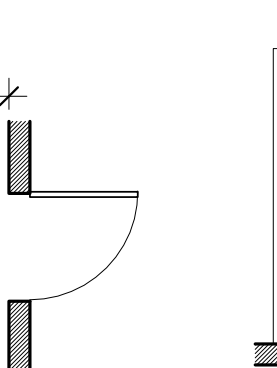


FIG. 404.2.6 TWO DOORS IN A SERIES (A) AND (B)

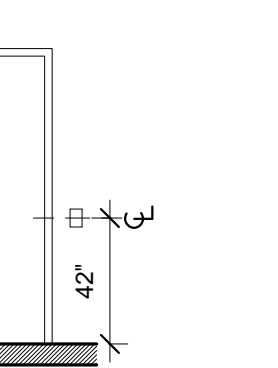


FIG. 407.2.2 ELEV. CALL BUTTONS

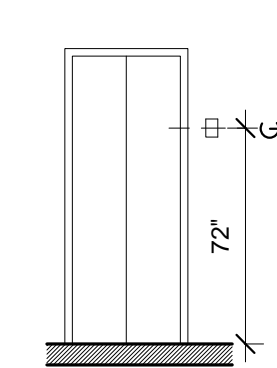


FIG. 407.2.3.1 HEIGHT OF ELEV. VISIBLE SIGNALS

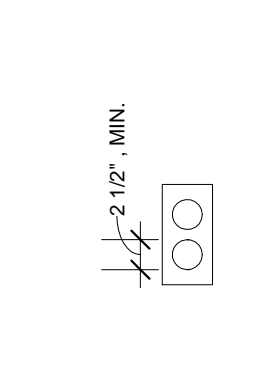


FIG. 407.2.3.2.2 SIZE OF ELEV. VISIBLE SIGNALS

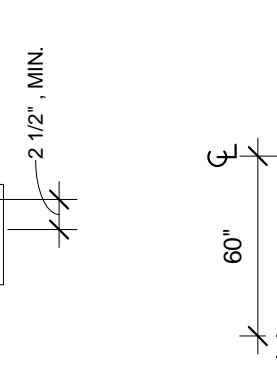


FIG. 407.2.4 TACTILE CHARACTERS ON ELEV. HOISTWAY ENTRANCES

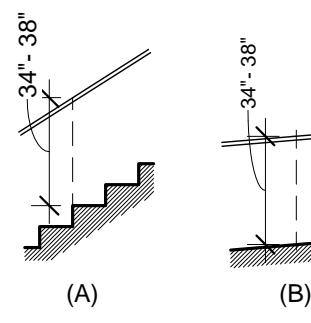


FIG. 505.4 HANDRAIL HEIGHT (A) STAIRS (B) RAMPS

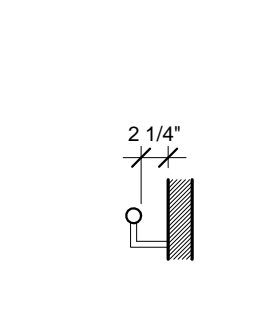


FIG. 505.5 HANDRAIL CLEARANCE

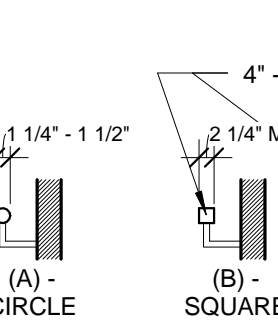
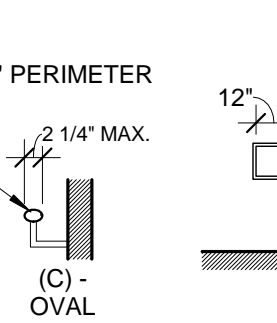
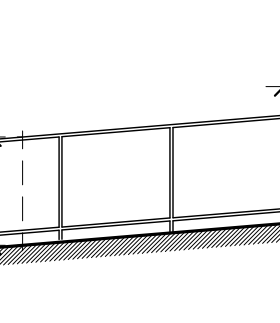


FIG. 505.7 HANDRAIL CROSS SECTION (A) CIRCULAR (B) AND (C) NON CIRCULAR



(B) - SQUARE



(C) - OVAL

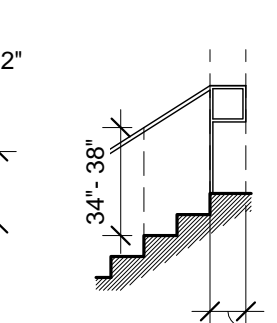


FIG. 505.10.1 TOP AND BOTTOM HANDRAIL EXTENSIONS AT RAMPS

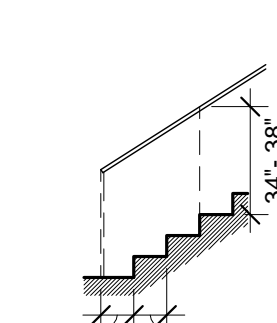


FIG. 505.10.2 TOP HANDRAIL EXTENSION AT STAIRS

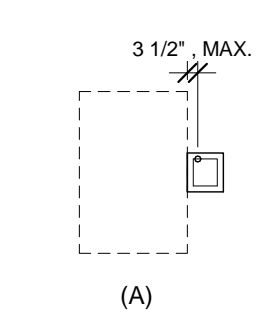


FIG. 505.10.3 TOP HANDRAIL EXTENSION AT STAIRS

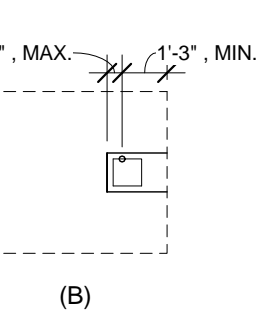
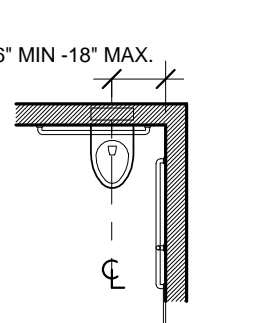


FIG. 602.5 DRINKING FOUNTAIN SPOUT LOCATION (A) PARALLEL APPROACH (B) FORWARD APPROACH



(B) FORWARD APPROACH

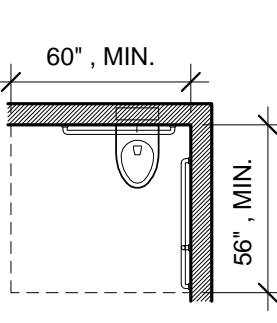


FIG. 604.2 WATER CLOSET LOCATION

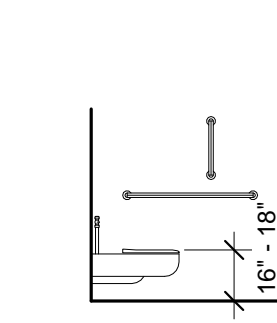


FIG. 604.3.1 SIZE OF CLEARANCE FOR WATER CLOSET

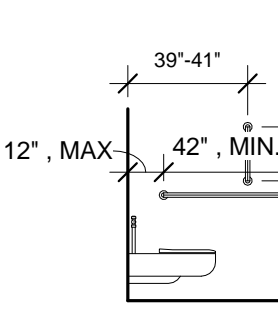


FIG. 604.4 HEIGHT TO TOP OF SEAT

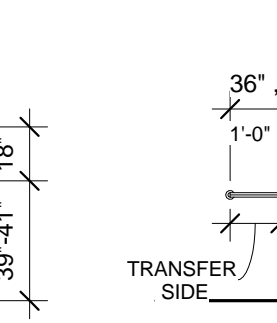


FIG. 604.5.1 SIDE WALL GRAB BAR FOR WATER CLOSET

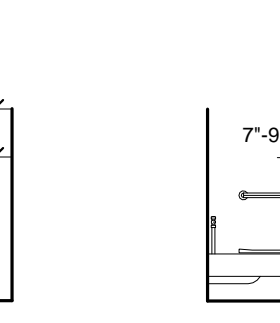


FIG. 604.5.2 REAR WALL GRAB BAR FOR WATER CLOSET

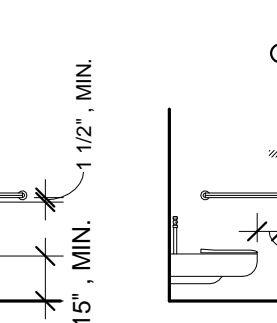


FIG. 604.7 DISPENSER LOCATION (A) BELOW GRAB BAR (B) ABOVE GRAB BAR

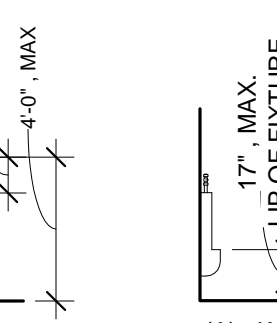


FIG. 605.2 HEIGHT OF URINALS (A) - WALL TYPE (B) - LIP OF FIXTURE

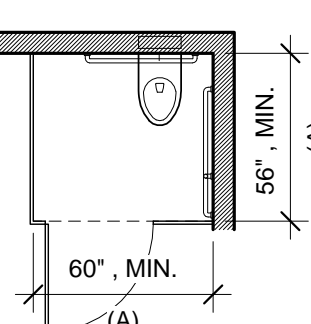
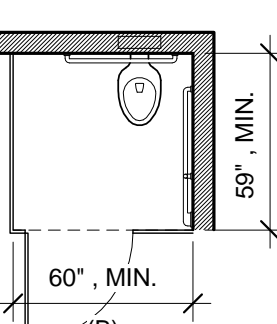


FIG. 604.8.1.1 WHEELCHAIR ACCESSIBLE TOILET COMPARTMENTS



(B)

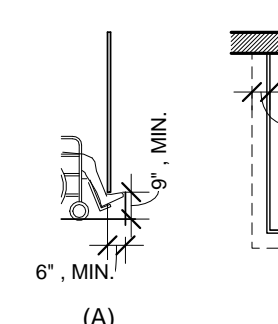


FIG. 604.8.1.4 TOILET COMPARTMENT TOES CLEARANCE (A) ELEVATION (B) PLAN

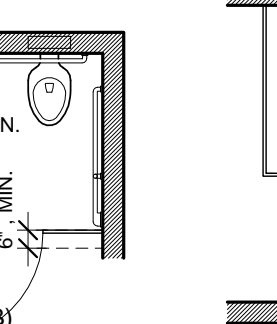


FIG. 604.8.3 TOILET COMPARTMENT DOORS

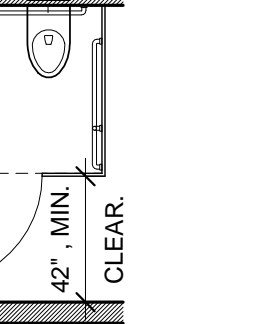


FIG. 606.3 - HEIGHT OF LAVATORIES AND SINKS

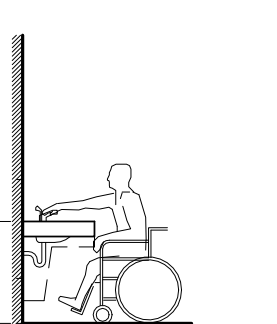
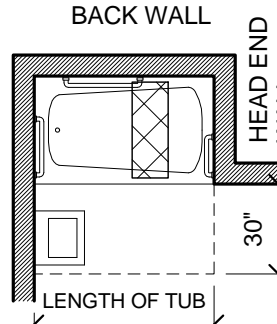


FIG. 607.2 CLEARANCE FOR BATHTUBS (A) WITHOUT PERMANENT SEAT (B) WITH PERMANENT SEAT



(B) WITH PERMANENT SEAT

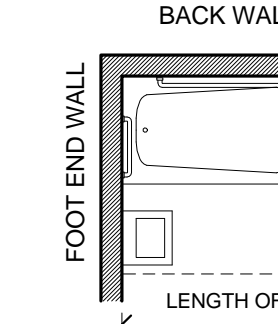


FIG. 607.4.2 GRAB BARS FOR BATHTUB WITHOUT PERMANENT SEATS SECTION AND PLAN

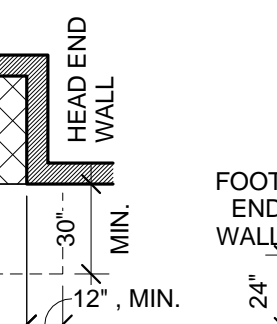


FIG. 607.4.1 GRAB BARS FOR BATHTUB WITH PERMANENT SEATS SECTION AND PLAN

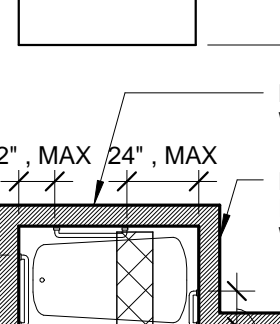
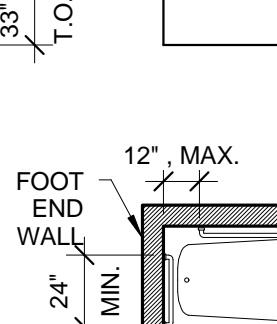


FIG. 610.2 BATHTUB SEAT (A) REMOVABLE IN-TUB SEAT SECTION AND PLAN (B) PERMANENT SEAT SECTION AND PLAN



(B) PERMANENT SEAT SECTION AND PLAN

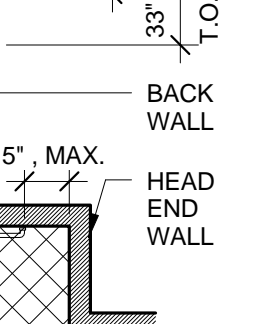


FIG. 609.2 SIZE OF GRAB BARS (A) CIRCULAR (B) AND (C) NON CIRCULAR

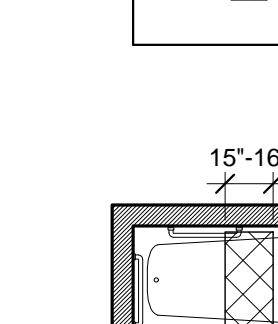


FIG. 609.3 SPACING OF GRAB BARS

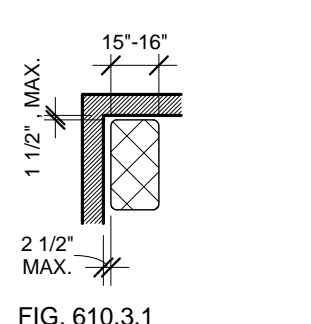


FIG. 610.3.1 RECTANGULAR SHOWER COMPARTMENT SEAT

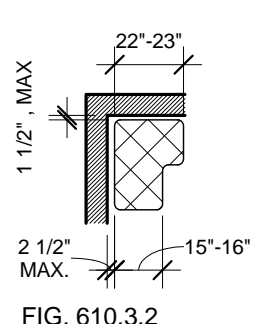


FIG. 610.3.2 L-SHAPED SHOWER COMPARTMENT SEAT

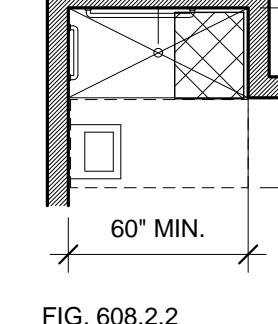


FIG. 608.2.2 STANDARD ROLL-IN-TYPE SHOWER COMPARTMENT

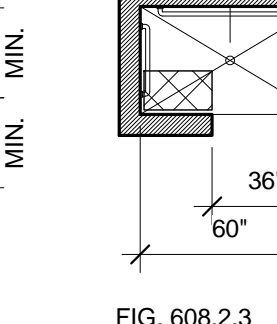


FIG. 608.2.3 ALTERNATE ROLL-IN-TYPE SHOWER COMPARTMENT

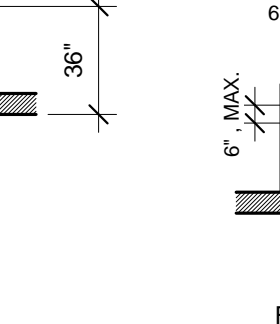
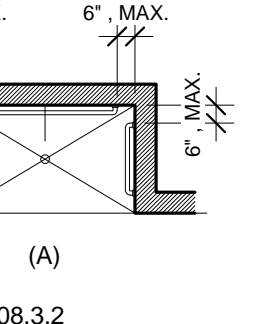
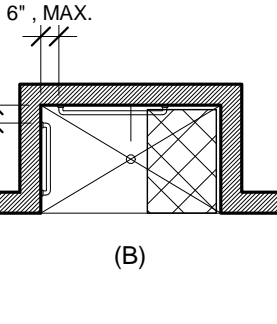


FIG. 608.3.2 GRAB BARS IN ROLL-IN-TYPE (A) STANDARD ROLL-IN-TYPE SHOWER (B) ROLL-IN-TYPE SHOWER WITH SEAT (C) ALTERNATE ROLL-IN-TYPE SHOWER



(B) ROLL-IN-TYPE SHOWER WITH SEAT



(C) ALTERNATE ROLL-IN-TYPE SHOWER

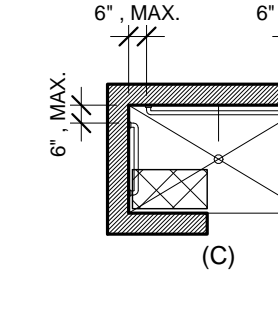


FIG. 608.2.1 TRANSFER-TYPE SHOWER COMPARTMENT

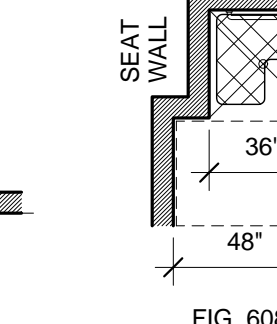


FIG. 608.3.1 GRAB BARS IN TRANSFER-TYPE SHOWERS

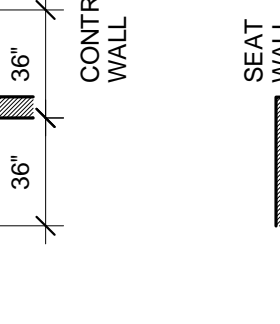
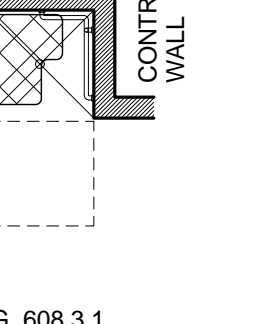
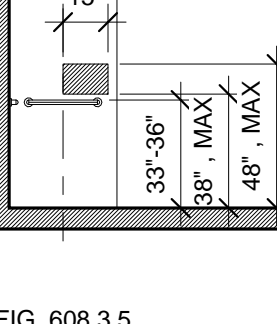


FIG. 608.3.5 CONTROLS IN TRANSFER-TYPE SHOWERS



(A) CAN BE LOCATED ON ANY WALL OF THE SHOWER



(B) WITH SEAT

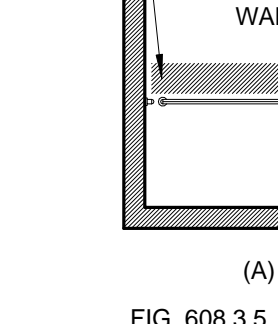
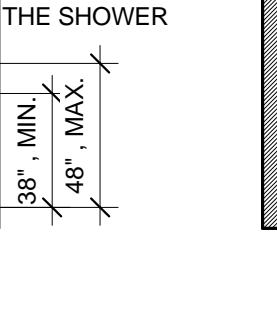
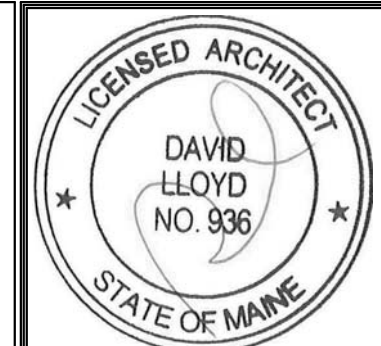


FIG. 608.3.5 CONTROLS IN TRANSFER-TYPE SHOWERS



(B) WITH SEAT



Developers Collaborative
Developers Collaborative
Portland, ME 04101

Consultant:
ARCHETYPE architects
48 Union Wharf Portland, Maine 04101
(207) 772-6022 ARCHETYPE@ARCHETYPEPA.COM

Project:
NATHAN CLIFFORD SCHOOL REDEVELOPMENT
180 Falmouth Street Portland, Maine

Date: 15 JAN 2014
Scale: As indicated
ACCESSIBILITY STANDARDS

AS1.1