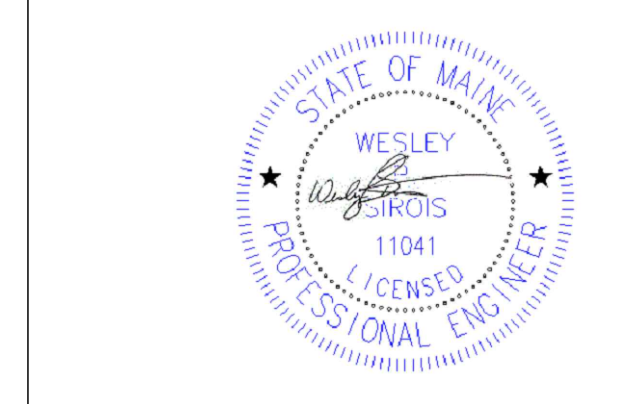
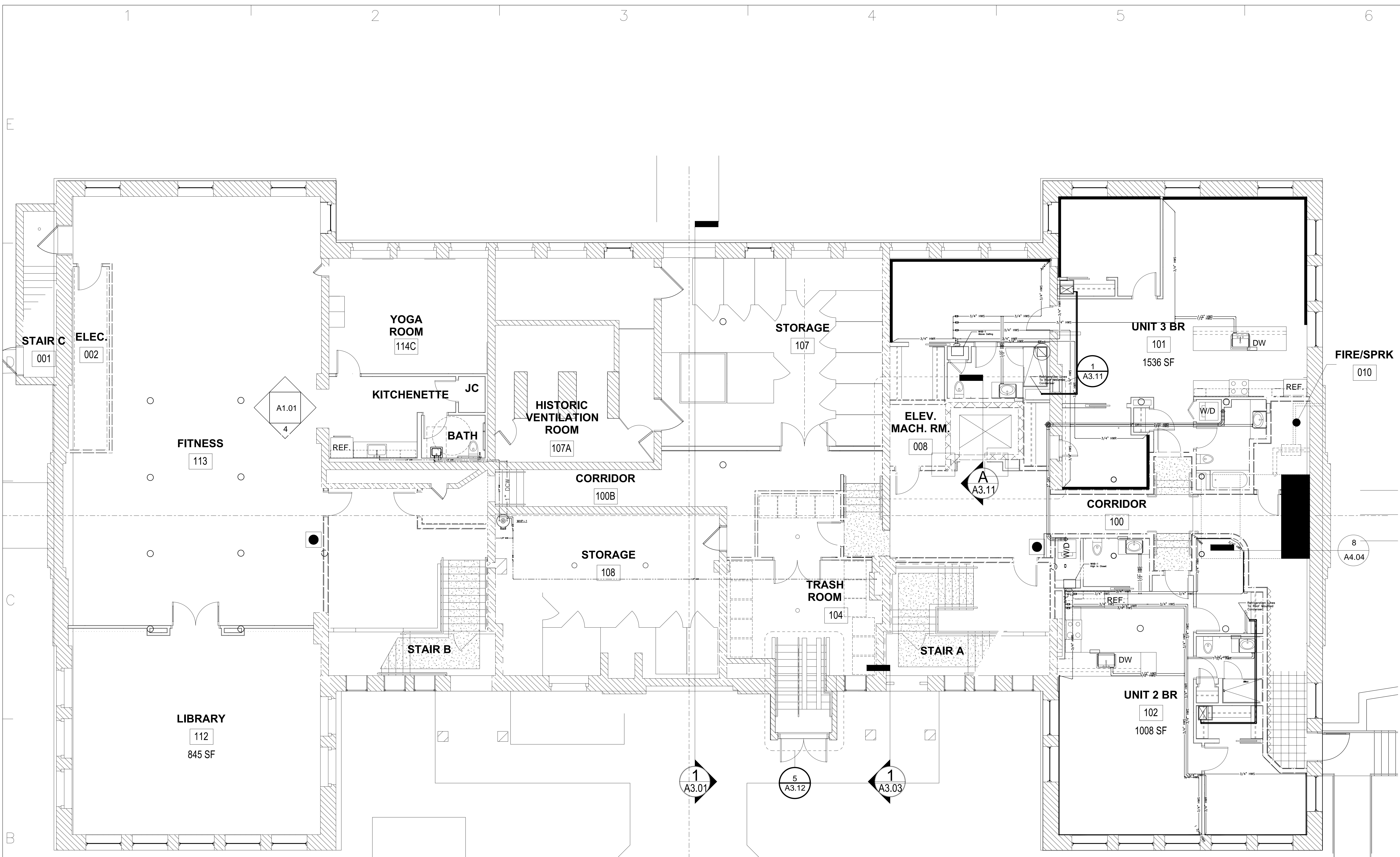


Nathan Clifford
Falmouth ST.
Portland, Maine

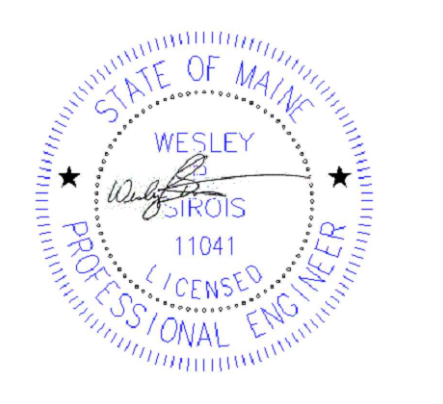


REV. NO.	1/21/12	Final Drawings
MARK	DATE	DESCRIPTION
SCALE: 1/2" = 1'		
PROJECT NO.	----	
CAD DWG FILE:	NE M&P BASEMENT.DWG	
DRAWN BY:	WPS	
CHK'D BY:	-----	
COPYRIGHT:	-----	

SHEET TITLE
Basement Floor HVAC

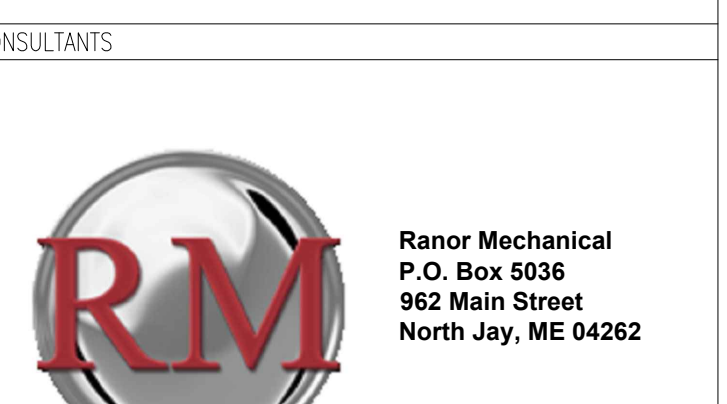
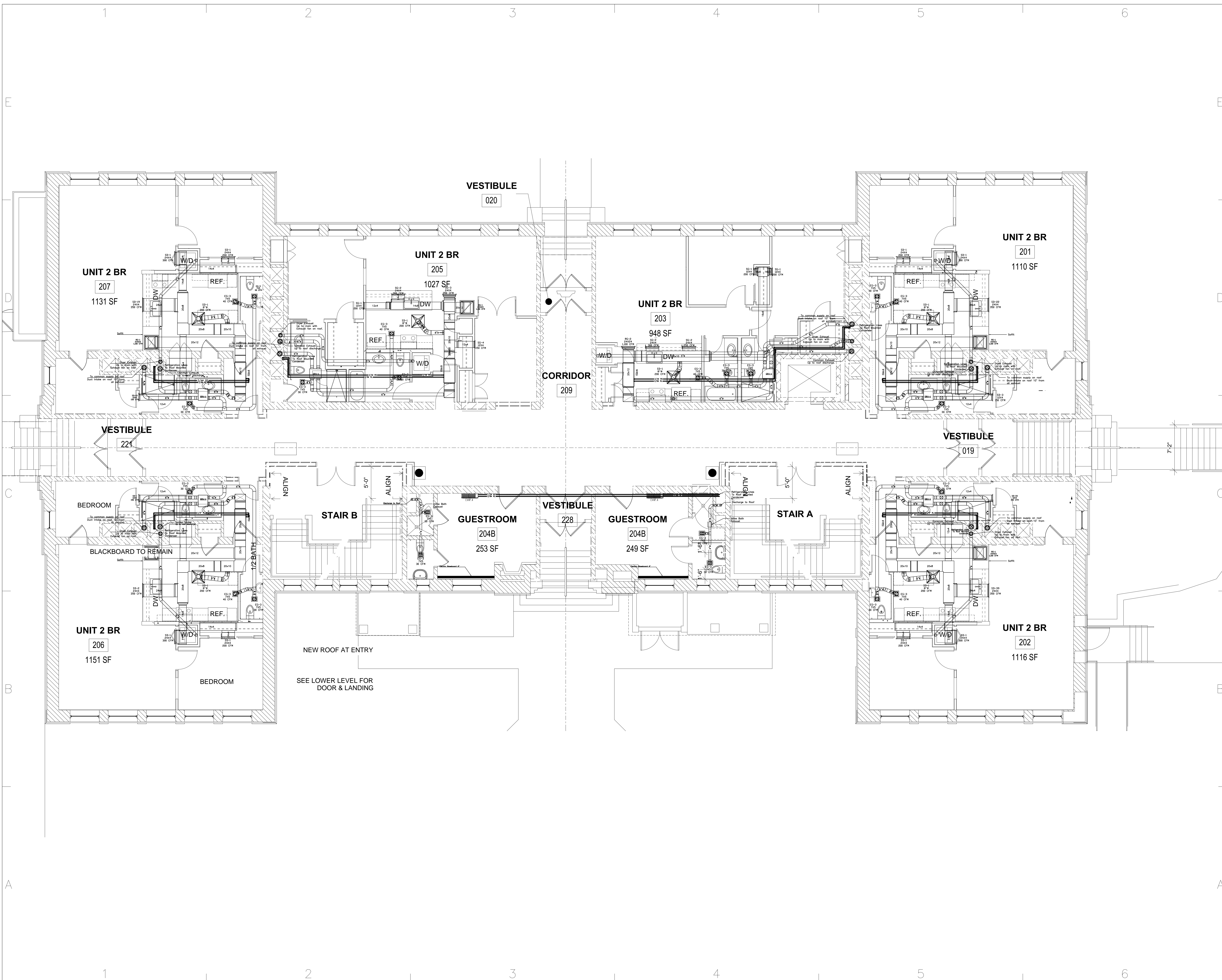


OWNER
Nathan Clifford
Falmouth ST.
Portland, Maine

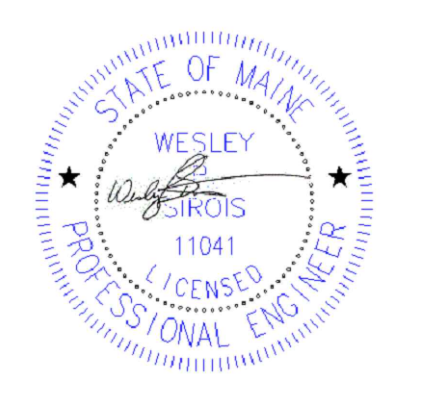


REV. NO.	1/21/12	Final Drawings
MARK	DATE	DESCRIPTION
SCALE: 1/2" = 1'		
PROJECT NO.	----	
CAD DWG FILE:	NE M&P BASEMENT.DWG	
DRAWN BY:	WPS	
CHK'D BY:	-----	
COPYRIGHT:	-----	

SHEET TITLE
Basement Floor Heating Layout



OWNER
Nathan Clifford
Falmouth ST.
Portland, Maine



REV.	DATE	DESCRIPTION

SCALE: 3/4" = 1'
PROJECT NO.: ----
CAD DWG FILE: NC M&P 1ST FLOOR.DWG
DRAWN BY: WPS
CHK'D BY:
COPYRIGHT:

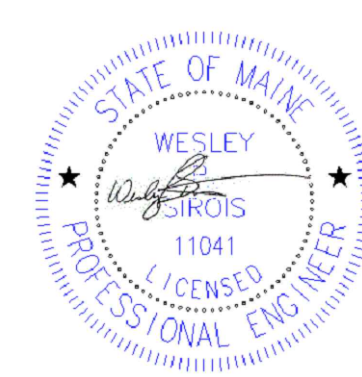
SHEET TITLE
1st Floor HVAC



Ranor Mechanical
P.O. Box 5036
962 Main Street
North Jay, ME 04262

Nathan Clifford
Falmouth ST.
Portland, Maine

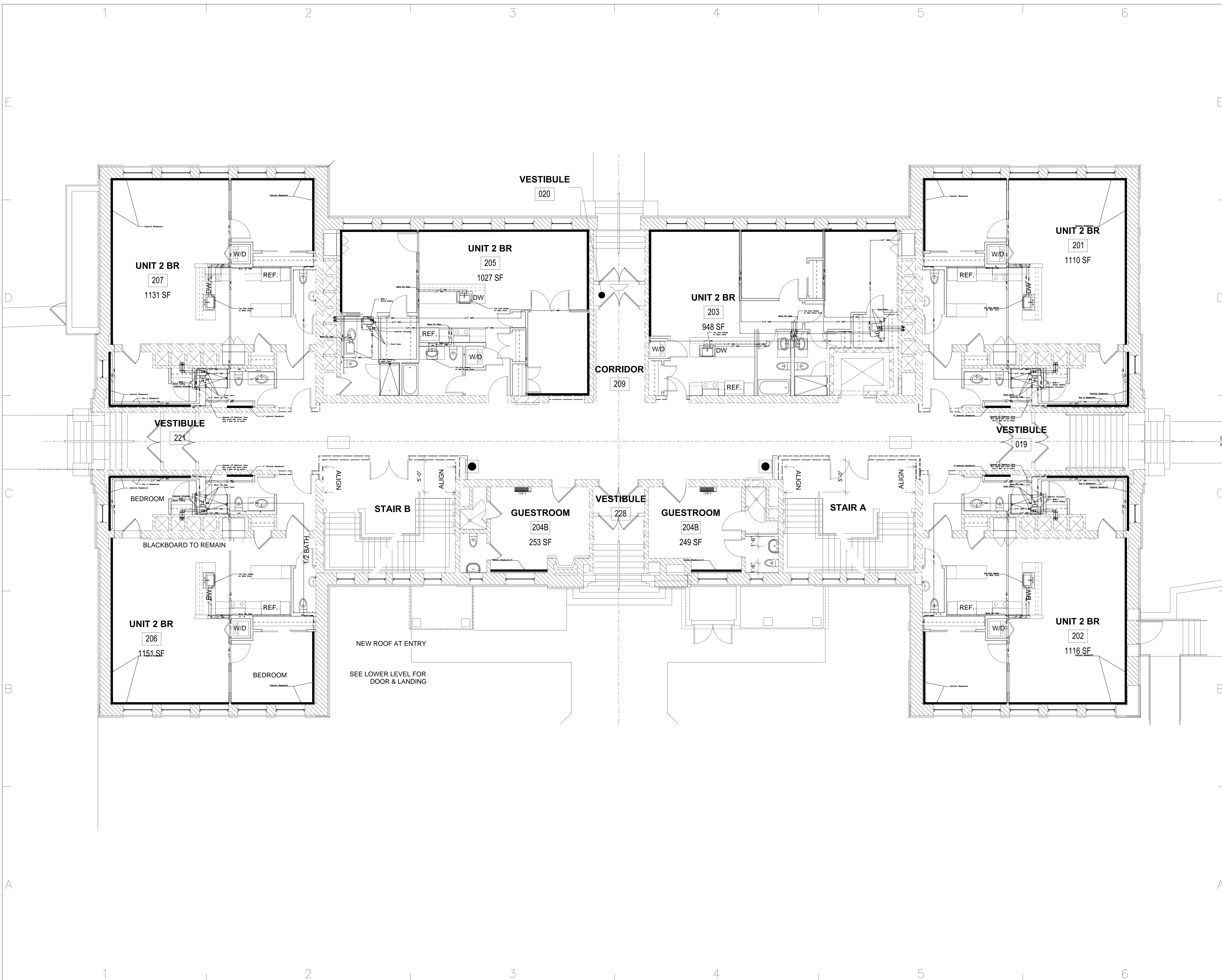
OWNER



REV.	DATE	DESCRIPTION

SCALE: 3/4" = 1'
PROJECT NO: ----
CAD DWG FILE: NC M&P 1ST FLOOR.DWG
DRAWN BY: WPS
CHK'D BY:
COPYRIGHT:

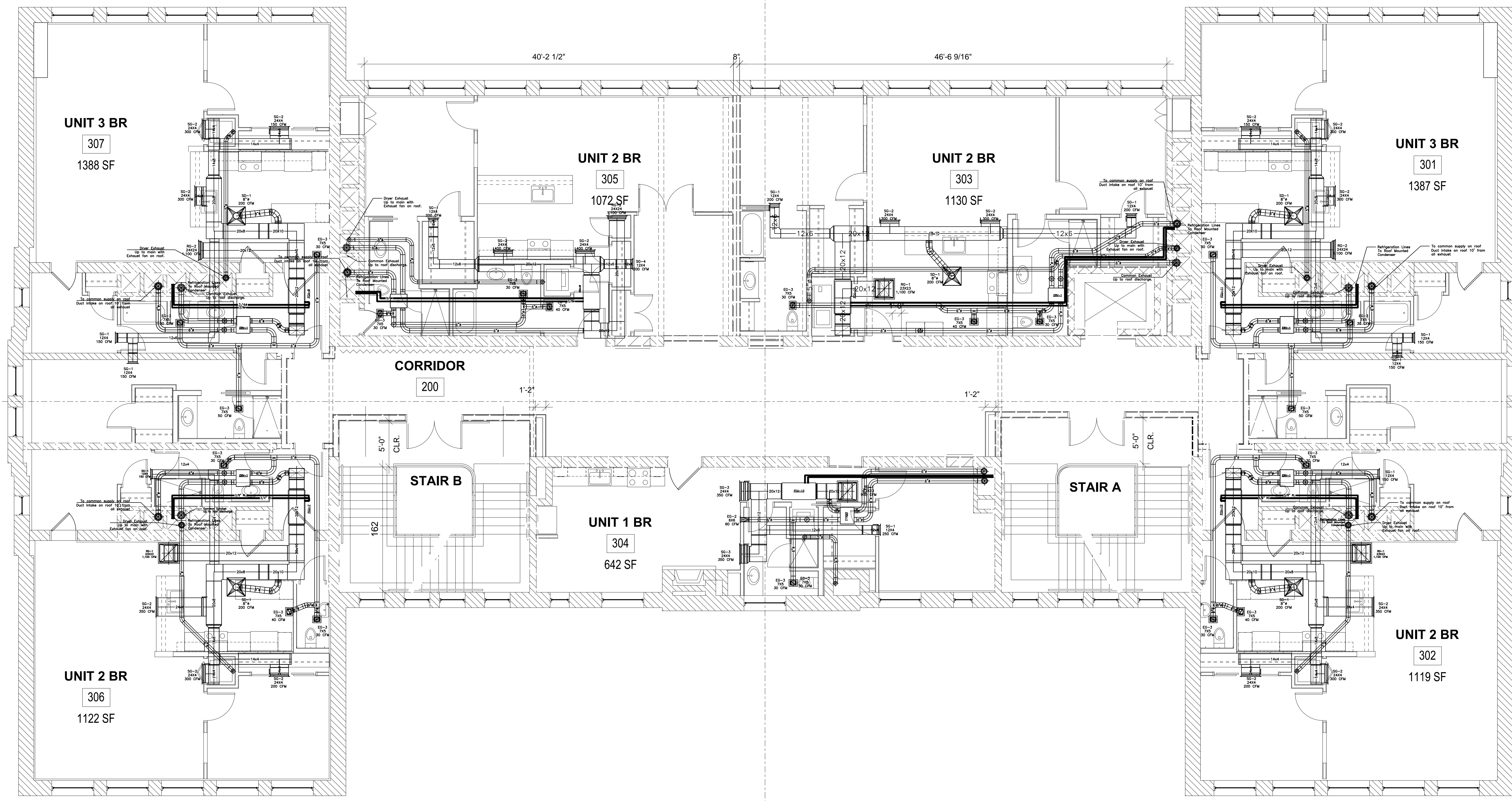
SHEET TITLE
1st Floor Heating Layout



CONSULTANTS



OWNER
Nathan Clifford
Falmouth ST.
Portland, Maine



REV. #	DATE	DESCRIPTION

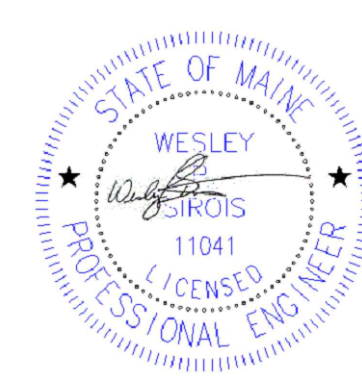
SCALE: 3/4" = 1"
 PROJECT NO: ----
 CAD DWG FILE: NC M&P 2ND FLOOR.DWG
 DRAWN BY: WPS
 CHK'D BY:
 COPYRIGHT:

SHEET TITLE
2nd Floor HVAC



Nathan Clifford
Falmouth ST.
Portland, Maine

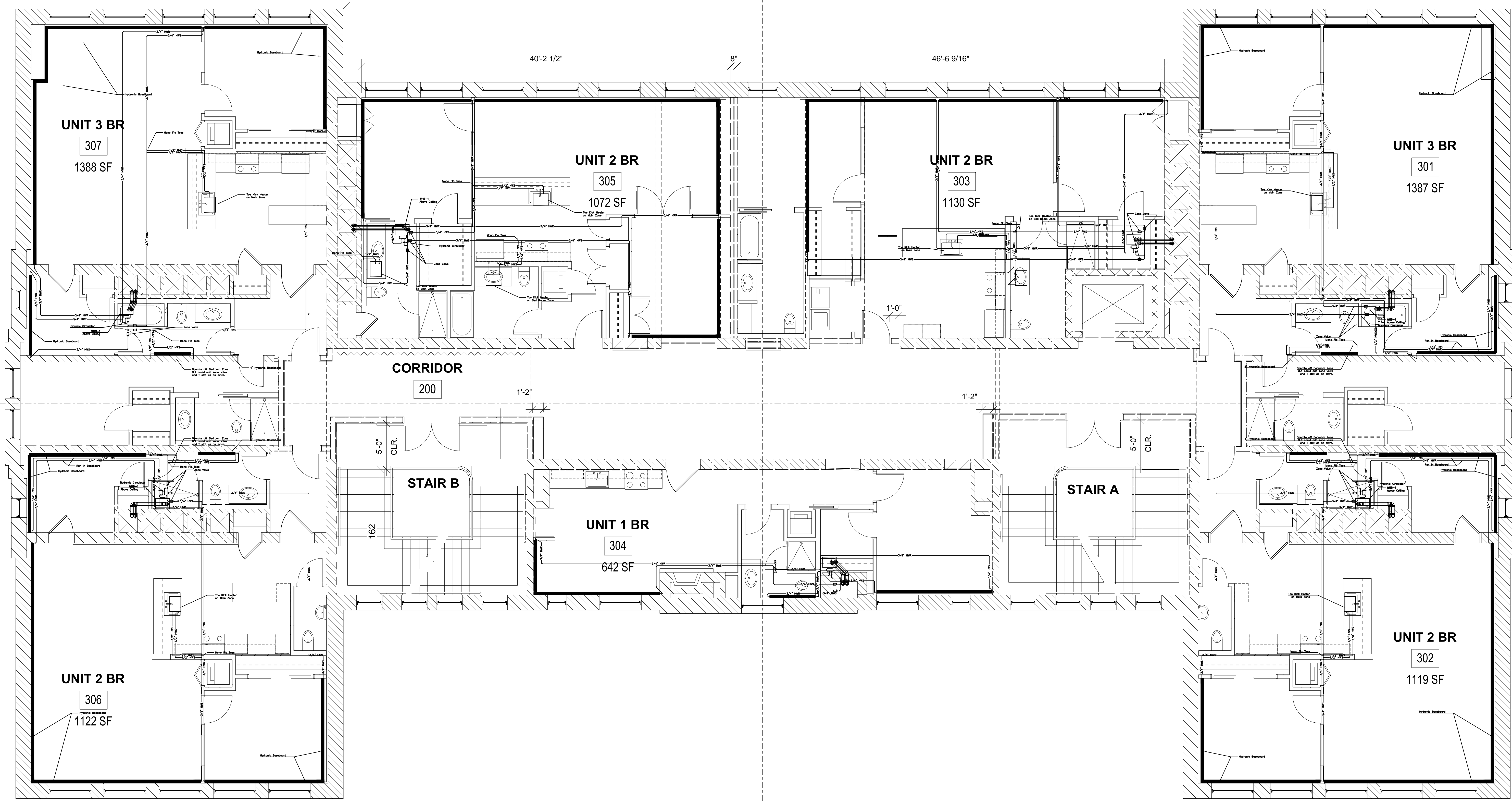
OWNER



REV.	DATE	DESCRIPTION

SCALE: 3/4" = 1'
PROJECT NO: ----
CAD DWG FILE: NE M&P 2ND FLOOR.DWG
DRAWN BY: WPS
CHK'D BY:
COPYRIGHT:

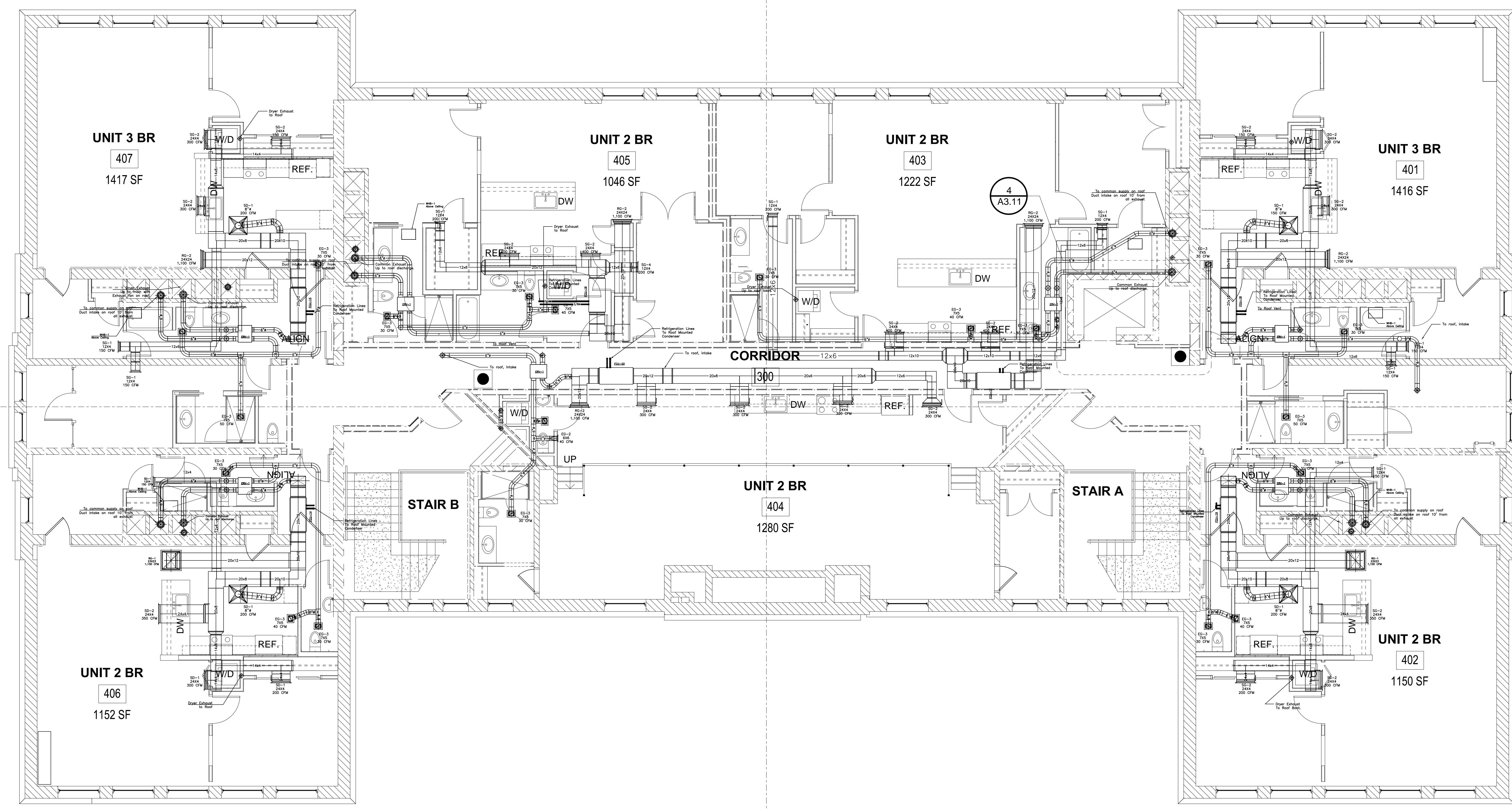
SHEET TITLE
2nd Floor Heating Layout



CONSULTANTS



OWNER
Nathan Clifford
Falmouth ST.
Portland, Maine



REV. #	DATE	DESCRIPTION

SCALE: 3/4" = 1'
 PROJECT NO: ----
 CAD DWG FILE: NC M&P 3RD FLOOR.DWG
 DRAWN BY: WPS
 CHK'D BY:
 COPYRIGHT:

SHEET TITLE
3rd Floor HVAC

CONSULTANTS



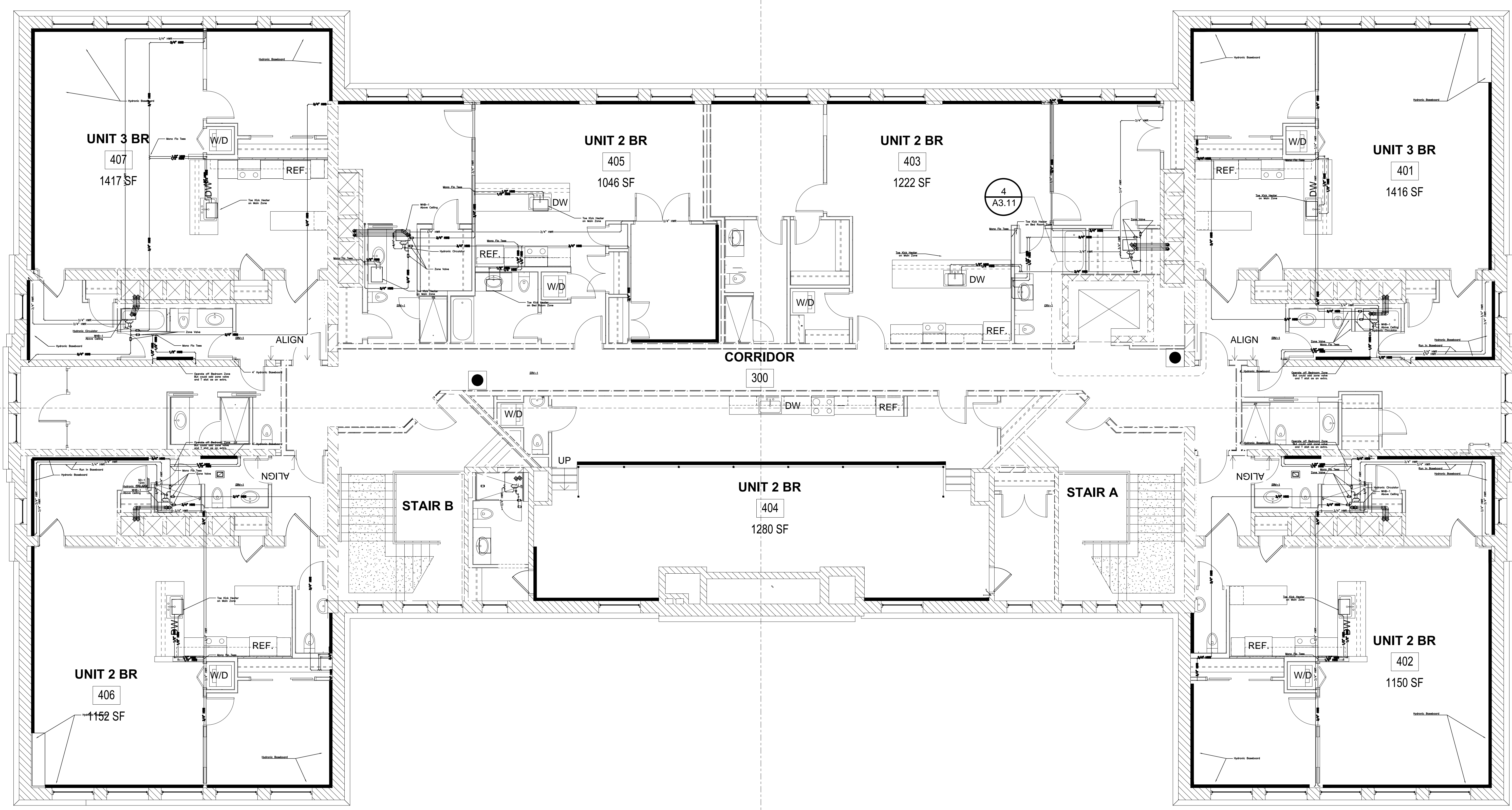
OWNER
Nathan Clifford
Falmouth ST.
Portland, Maine

OWNER



REV.	DATE	DESCRIPTION

SHEET TITLE
3rd Floor Heating Layout



A

CONSULTANTS



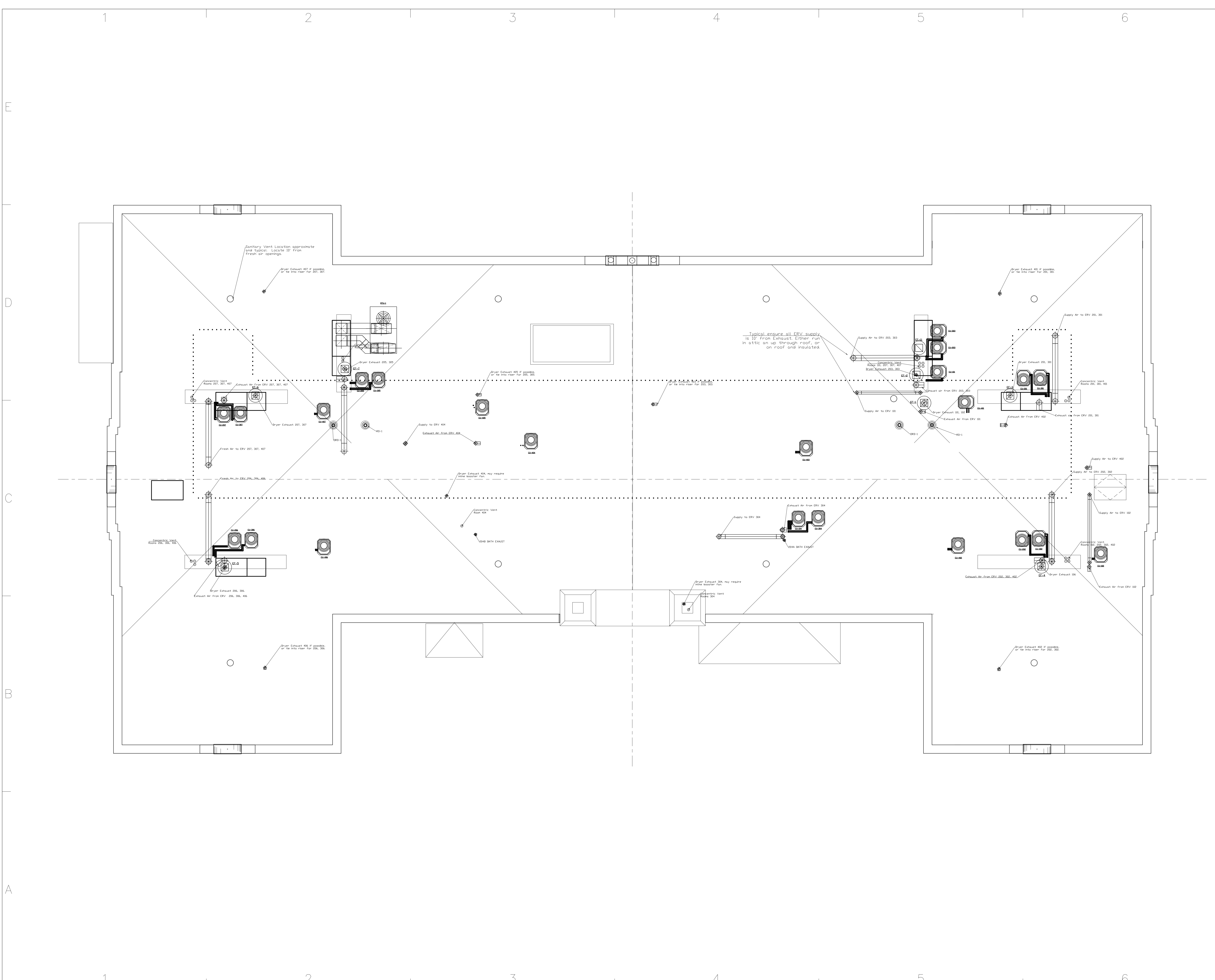
Nathan Clifford
Falmouth ST.
Portland, Maine

OWNER



REV. #	DATE	DESCRIPTION

SHEET TITLE
Roof Plan



Sanitary Vent Location approximate
and typical. Locate 10' from
fresh air openings.

Dryer Exhaust 407 if possible
or the into riser for 205, 307.

Dryer Exhaust 405, 305

Dryer Exhaust 405 if possible
or the into riser for 205, 305.

Dryer Exhaust 403 if possible
or the into riser for 203, 303.

Typical ensure all ERV supply
is 10' from Exhaust either run
in attic or up through roof, or
on roof and insulated.

Supply Air to ERV 205, 305

Dryer Exhaust 401 if possible
or the into riser for 201, 301.

Supply Air to ERV 201, 301

Concentric Vent
Room 207, 307, 407

Exhaust Air from ERV 207, 307, 407

Dryer Exhaust 207, 307

Fresh Air to ERV 207, 307, 407

Fresh Air to ERV 206, 306, 406

Concentric Vent
Room 206, 306, 406

Exhaust Air from ERV 206, 306, 406

Dryer Exhaust 206, 306

Dryer Exhaust 404, may require
extra booster fan.

Concentric Vent
Room 404

204B BATH EXHAUST

Supply Air to ERV 304

Exhaust Air from ERV 304

204A BATH EXHAUST

Supply Air to ERV 402

Supply Air to ERV 200, 300

Supply Air to ERV 402

Supply Air to ERV 200, 300

Supply Air to ERV 302

Concentric Vent
Room 202, 302, 402

Exhaust Air from ERV 202, 302, 402

Dryer Exhaust 202

Concentric Vent
Room 202, 302, 402

Exhaust Air from ERV 202, 302, 402

Dryer Exhaust 202

Exhaust Air from ERV 202

Supply Air to ERV 202

Supply Air to ERV 202

Supply Air to ERV 202

Supply Air to ERV 202

Supply Air to ERV 202

Supply Air to ERV 202

Supply Air to ERV 202

Supply Air to ERV 202

Supply Air to ERV 202

Supply Air to ERV 202

Supply Air to ERV 202

Supply Air to ERV 202

Supply Air to ERV 202

Supply Air to ERV 202

Supply Air to ERV 202

Supply Air to ERV 202

Supply Air to ERV 202

Supply Air to ERV 202

Supply Air to ERV 202

ELECTRIC HEATER SCHEDULE							
TAG #	MANUFACTURER	MODEL	BTU/HR	KW	V/Ø	AMPS	LOCATION
CUH-1	Qmark	SSHO4008	13,650	4	208/1	19.2	FALMOUTH ST VESTIBULE
CUH-2	Qmark	SSHO4008	13,650	4	208/1	19.2	DEANE ST VESTIBULE
CUH-3	Qmark	SSHO4008	13,650	4	208/1	19.2	PLAYGROUND VESTIBULE
CUH-4	Qmark	SSHO4008	13,650	4	208/1	19.2	PAYSON ST VESTIBULE
CUH-5	Qmark	SSHO4008	13,650	4	208/1	19.2	STAIR A
CUH-6	Qmark	SSHO4008	13,650	4	208/1	19.2	STAIR B

MINI - MULTI SPLIT OUTDOOR UNITS										
QTY	Tag #	Manufacturer	Model	Cooling Capacity BTUH	Heating Capacity BTUH	SEER	V/Ø	MCA	MROPD	Areas Served
1	CU-104	Fujitsu	AOU48RLXFZ1	51100	57000	17	208/1	23.7	40	1st Floor Guest, 1,2,3 Corridor

MINI - MULTI SPLIT INDOOR UNITS										
QTY	Tag #	Manufacturer	Model	Cooling Capacity BTUH	Heating Capacity BTUH	SEER	V/Ø	MCA	MROPD	Areas Served
2	EVAP. 1	Fujitsu	ASU9RLF	12000	13500	17	208/0	0.15		1st Floor Guest
3	EVAP. 2	Fujitsu	ASU12RLF	12000	13500	17	208/1	0.19		Corridor 1,2,3

FINTUBE PERFORMANCE SCHEDULE										
TAG #	OUTPUT (MBH/FT) @ 180 F	FLOW RATE(GPM)	MOUNT'G HEIGHT(IN)	ENCLOSURE HEIGHT(IN)	ELEMENT LENGTH(FT)	ENCLOSURE LENGTH(FT)	TUBE SIZE(IN)	FINS/FT	VALVE TAG	ROD MODEL
FTR-1	900	4	0	-	*	**	3/4"	55	V-1	HAYDEN HEAT BASE 958-2

* - ELEMENT LENGTH SHALL BE AS REQUIRED TO MEET THE LOAD REQUIREMENTS INDICATED ON THE DRAWINGS
 ** - ENCLOSURE LENGTH SHALL BE ELEMENT LENGTH PLUS 12" OR WALL TO WALL

FAN SCHEDULE																	
TAG	SERVICE	MANUFACTURER	MODEL	CFM	EXTERNAL PD (INWG)	FAN RPM	SONES	ELECTRICAL						DAMPER	DISCHARGE	ROOF OPENING	NOTES
								HP	VOLT	PHASE	DRIVE	AMP	WATTS				
EF-1	DRYER RISER 1	Greenheck	TBD	500	TBD	TBD	TBD	TBD	115	1						PRESSURE CONTROL	
EF-2	DRYER RISER 2	Greenheck	TBD	500	TBD	TBD	TBD	TBD	115	1						PRESSURE CONTROL	
EF-3	DRYER RISER 3	Greenheck	TBD	500	TBD	TBD	TBD	TBD	115	1						PRESSURE CONTROL	
EF-4	DRYER RISER 4	Greenheck	TBD	500	TBD	TBD	TBD	TBD	115	1						PRESSURE CONTROL	
EF-5	DRYER RISER 5	Greenheck	TBD	500	TBD	TBD	TBD	TBD	115	1						PRESSURE CONTROL	
EF-6	DRYER RISER 6	Greenheck	TBD	500	TBD	TBD	TBD	TBD	115	1						PRESSURE CONTROL	
EF-7	DRYER RISER 7	Greenheck	TBD	500	TBD	TBD	TBD	TBD	115	1						PRESSURE CONTROL	
EF-11	LL TRASH, LL Bath, LL JC	Greenheck	TBD	600	TBD	TBD	TBD	TBD	115	1							

ERU (Energy Recovery Unit) Schedule																						
TAG	QTY	FAN						POWER												MANUFACTURER	MODEL #	Service Area
		OA (CFM)	ESP (IN. WG)	Total SP (IN. WG)	EX. (CFM)	ESP (IN. WG)	Total SP (IN. WG)	OA OPER. HP	OA FAN MOTOR HP	OA FAN RPM	EX. FAN OPER. HP	EX. FAN MOTOR HP	EX. FAN RPM	V/Ø	MCA	MROPD						
ERU-1	22	40-110	0.28	0.6	90	0.28	0.6	0.03	0.03	-	0.03	0.03	?	120/1	0.35	15	Renewaire GR-90		Guest Rooms-Corridors			

RTU SCHEDULE																							
TAG	SERVICE	MFR	MODEL	OUTDOOR AIR CFM	SUPPLY CFM	EXT SP INWG	TOTAL SP INWG	FAN DIA INCHES	QTY	FAN TYPE	FAN SPEED	DRIVE TYPE	BHP	HP	V/P/C	FLA	MCA	MOP	FUSE	COOLING CAPACITY TONS	HEATING CAPACITY (out) MBH	WEIGHT LBS	NOTES
RTU-1	LOWER LEVEL-CORRIDORS	Trane	YCH120E3RHA	400 min	4000	0.42	1.42	-	-	-	1564		2.64	-	208-230/60/3	11.2	48.9	60	-	10	200	1369	SUPPLY WITH OPTIONS 1, 2, 3, 4, 5, 6

FAN COIL UNIT SCHEDULE																								
TAG	INDOOR SECTION															OUTDOOR SECTION								
	EVAPORATOR COIL				FAN			FAN POWER		ELECTRIC HEAT			TOTAL POWER			CONDENSER					TAG	Service Area		
	Nom. Cap. Ton	TOT. MBH	SENS. MBH	MANUFACTURER - MODEL #	CFM	ESP. IN	FAN HP	RPM	V/Ø	MCA	V/Ø	KW	MCA	V/Ø	MCA	MROPD	Nom. Cap. Ton	V/Ø	MCA	MROPD			MANUFACTURER MODEL #	
FCU-1 TO 22	3	36.6	28	GAM5A0C42M31SA	1200	0.5	0.5	1050	208/1	5	NA	NA	NA	208/1	48	50	CU-1 TO 22	3	208/1	18	30	4TWB3036	EACH APARTMENT	

COMBI BOILER SCHEDULE																							
TAG #	QTY	MANUFACTURER	MODEL	TOTAL INPUT BTU/HR	TOTAL OUTPUT BTU/HR	EFF. %	DOMESTIC OUTPUT GPM	DOMESTIC TEMP RISE @ GPM	WATER PRESSURE (HYDRONIC/DHW)	TURNDOWN RATIO	WATER INLET (INCHES)	WATER OUTLET (INCHES)	COMBUSTION AIR, DIA (INCHES)	VENT DIA (INCHES)	TYPE	FUEL GAS	CONN	ELECTRICAL REQUIREMENTS	DIMENSIONS	WEIGHT LBS	LOCATION	REMARKS	
WHB-1	22	NAVLEN	CH-240ASME	199,000	181,090	91%	4.5	77	7-30 PSI	10:1	1"	1"	3"	3"	NG	3/4"		120 V	2 AMPS	17Wx28Hx12D	84	ABOVE KITCHEN	SUPPLY WITH ACCESSORIES 1,2,3,4,5,6

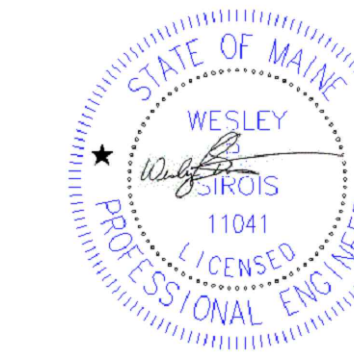
- CH QUICK-INSTALL MANIFOLD KIT
- PLUMB EASY VALVE SET
- READY LINK COMMUNICATION CABLE
- CONDENSATE NEUTRALIZER
- OUTDOOR RESET SENSOR
- CONDENSATE DRAIN HOSE

CONSULTANTS



Nathan Clifford
Falmouth ST.
Portland, Maine

OWNER



REV. 0
MARK DATE DESCRIPTION
SCALE: NTS
PROJECT NO: ----
CAD DWG FILE: NC M&P 3RD FLOOR.DWG
DRAWN BY: WPS
CHK'D BY:
COPYRIGHT:

SHEET TITLE
Mechanical Schedule