

CONSULTANTS



Nathan Clifford  
Falmouth ST.  
Portland, Maine

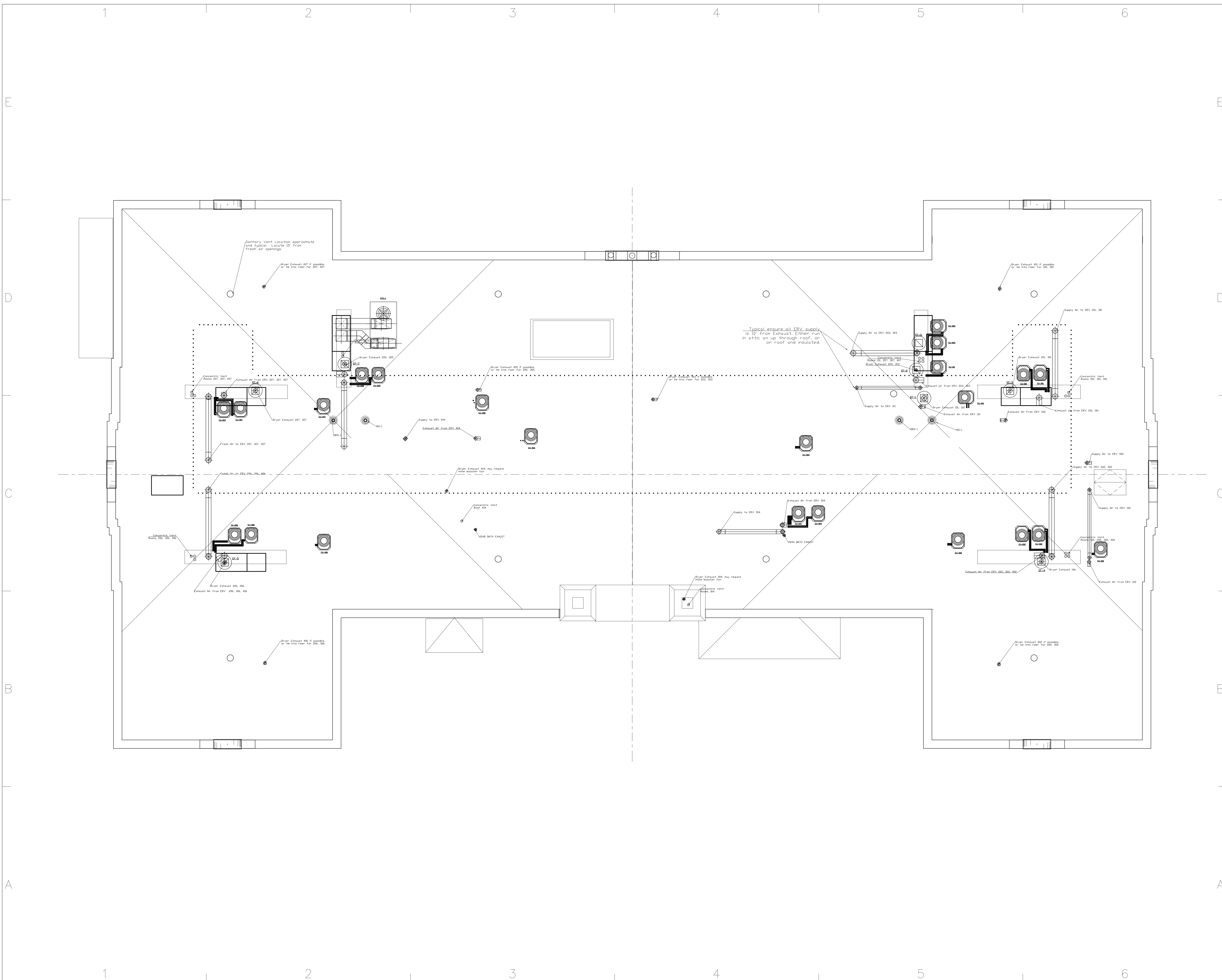
OWNER



REV. #	DATE	DESCRIPTION

SHEET TITLE  
**Roof Plan**

M-500  
SHEET SHEET INDEX OF TOTAL SHEETS



Sanitary Vent Location approximate  
and typical. Locate 10' from  
fresh air openings.

Dryer Exhaust 407 if possible  
or the into riser for 205, 307.

Dryer Exhaust 405, 305

Dryer Exhaust 405 if possible  
or the into riser for 205, 305.

Dryer Exhaust 405 if possible  
or the into riser for 205, 305.

Typical ensure all ERV supply  
is 10' from Exhaust either run  
in attic or up through roof, or  
on roof and insulated.

Supply Air to ERV 205, 305

Dryer Exhaust 407 if possible  
or the into riser for 205, 307.

Supply Air to ERV 205, 305

Concentric Vent  
Room 205, 307, 407

Exhaust Air from ERV 205, 307, 407

Fresh Air to ERV 205, 307, 407

Fresh Air to ERV 205, 305, 405

Concentric Vent  
Room 205, 305, 405

Dryer Exhaust 205, 305

Exhaust Air from ERV 205, 305, 405

Dryer Exhaust 405 if possible  
or the into riser for 205, 305.

Dryer Exhaust 404, may require  
extra booster fan.

Concentric Vent  
Room 404

2048 BATH EXHAUST

Dryer Exhaust 304, may require  
extra booster fan.

Concentric Vent  
Room 304

Supply Air to ERV 304

Exhaust Air from ERV 304

2044 BATH EXHAUST

Supply Air to ERV 303

Exhaust Air from ERV 303

Exhaust Air from ERV 303

Exhaust Air from ERV 402

Exhaust Air from ERV 201, 301

Supply Air to ERV 402

Supply Air to ERV 200, 300

Supply Air to ERV 302

Concentric Vent  
Room 200, 300, 400

Exhaust Air from ERV 200, 300, 400

Dryer Exhaust 200

Exhaust Air from ERV 202

Dryer Exhaust 402 if possible  
or the into riser for 200, 300.