

MADE WITH A TRIAL COPY OF
SmartDraw

MADE WITH A TRIAL COPY OF
SmartDraw

MADE WITH A TRIAL COPY OF
SmartDraw

MADE WITH A TRIAL COPY OF
SmartDraw

MADE WITH A TRIAL COPY OF
SmartDraw

MADE WITH A TRIAL COPY OF
SmartDraw

MADE WITH A TRIAL COPY OF
SmartDraw

MADE WITH A TRIAL COPY OF
SmartDraw

MADE WITH A TRIAL COPY OF
SmartDraw

MADE WITH A TRIAL COPY OF
SmartDraw

MADE WITH A TRIAL COPY OF
SmartDraw

MADE WITH A TRIAL COPY OF
SmartDraw

MADE WITH A TRIAL COPY OF
SmartDraw

MADE WITH A TRIAL COPY OF
SmartDraw

MADE WITH A TRIAL COPY OF
SmartDraw

MADE WITH A TRIAL COPY OF
SmartDraw

MADE WITH A TRIAL COPY OF
SmartDraw

MADE WITH A TRIAL COPY OF
SmartDraw

MADE WITH A TRIAL COPY OF
SmartDraw

MADE WITH A TRIAL COPY OF
SmartDraw

MADE WITH A TRIAL COPY OF
SmartDraw

MADE WITH A TRIAL COPY OF
SmartDraw

MADE WITH A TRIAL COPY OF
SmartDraw

MADE WITH A TRIAL COPY OF
SmartDraw

MADE WITH A TRIAL COPY OF
SmartDraw

MADE WITH A TRIAL COPY OF
SmartDraw

MADE WITH A TRIAL COPY OF
SmartDraw

MADE WITH A TRIAL COPY OF
SmartDraw

MADE WITH A TRIAL COPY OF
SmartDraw

MADE WITH A TRIAL COPY OF
SmartDraw

MADE WITH A TRIAL COPY OF
SmartDraw

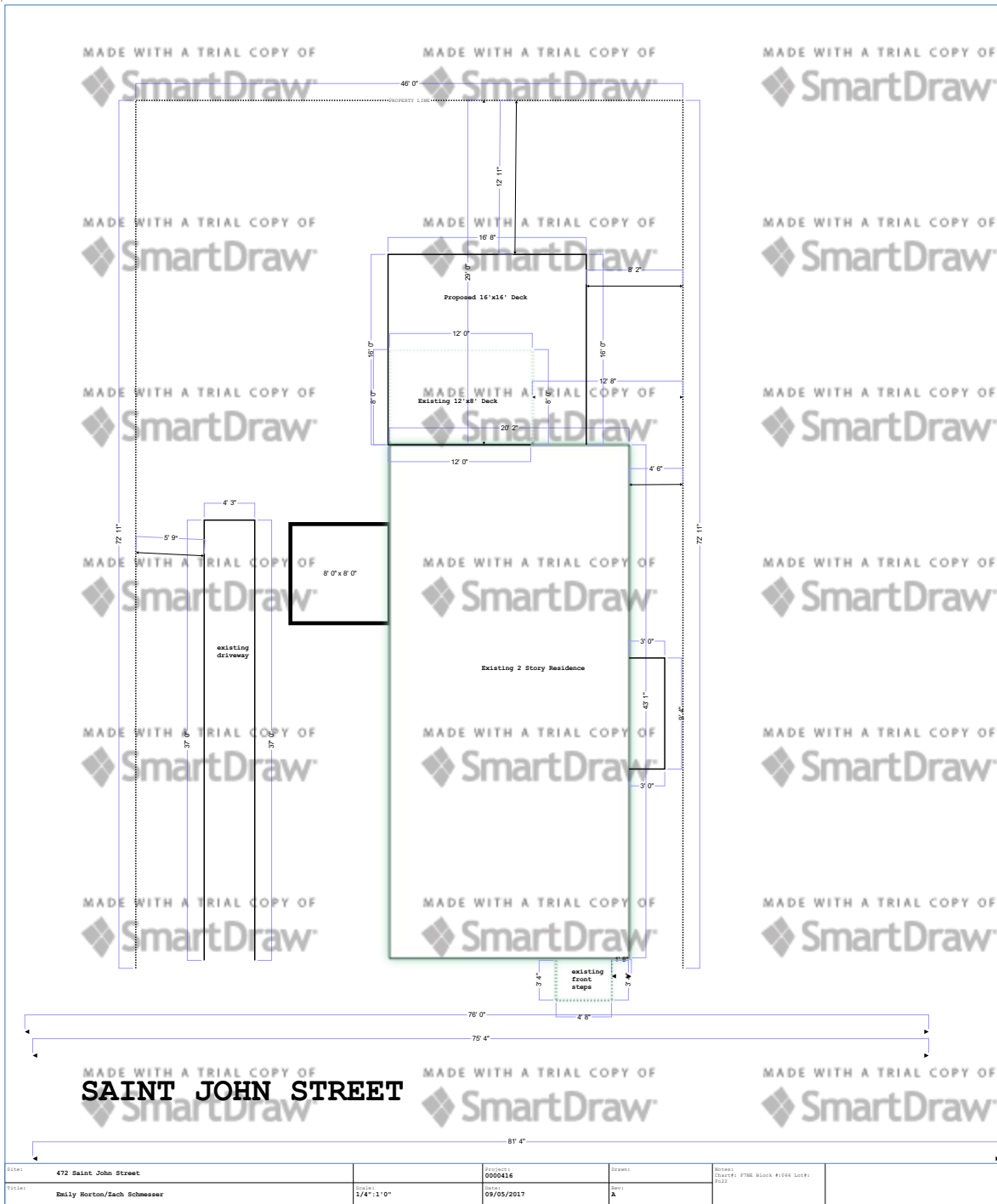
MADE WITH A TRIAL COPY OF
SmartDraw

MADE WITH A TRIAL COPY OF
SmartDraw

MADE WITH A TRIAL COPY OF
SmartDraw

MADE WITH A TRIAL COPY OF
SmartDraw

MADE WITH A TRIAL COPY OF
SmartDraw



Site:	472 Saint John Street	Project:	0000416	Drawn:		Notes:	Sheet: F780 STACK FLOOR LIFT 2022
Client:	Rhily Horton/Zach Schmesser	Scale:	1/4"=1'-0"	Date:	09/05/2017	Rev:	A