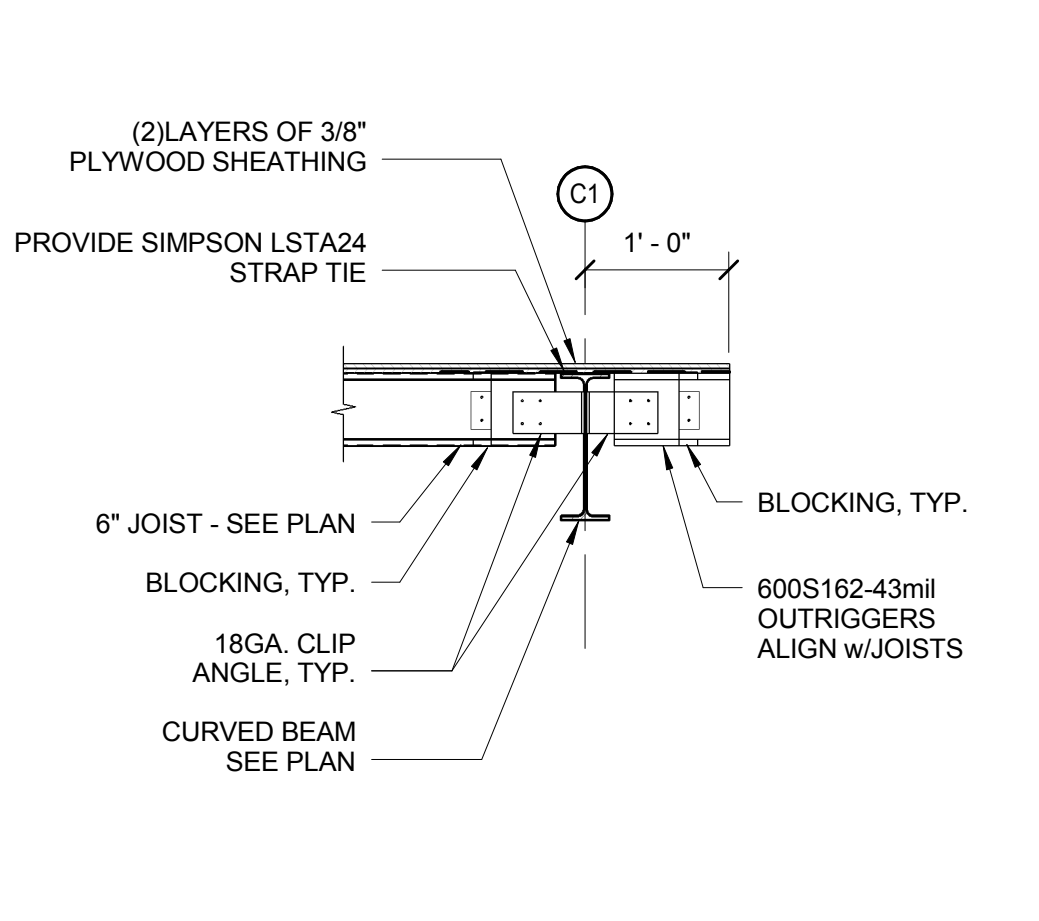
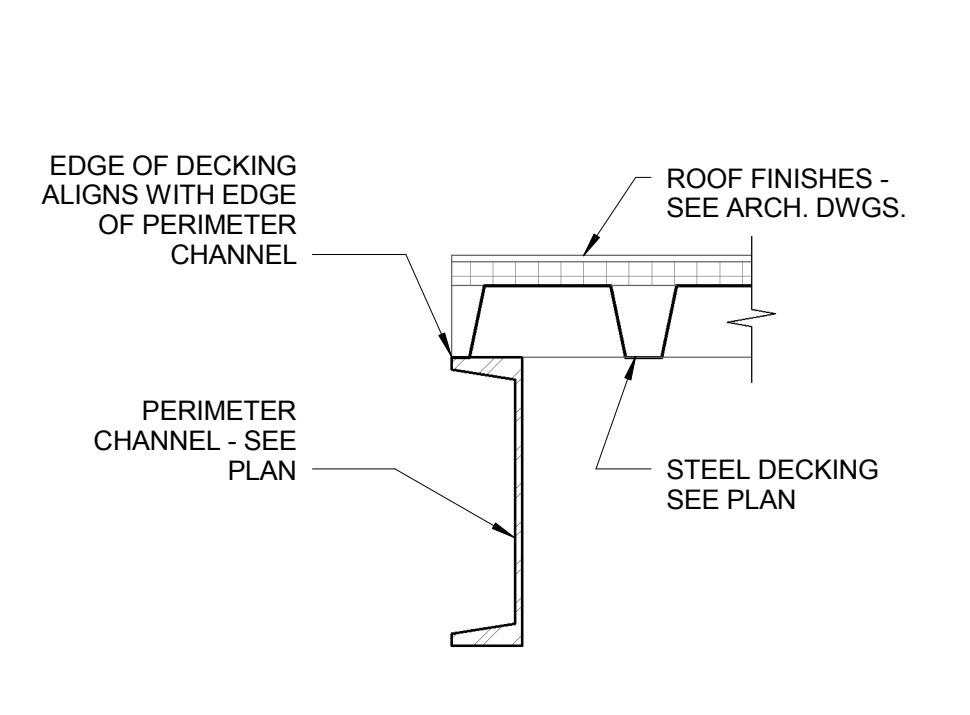
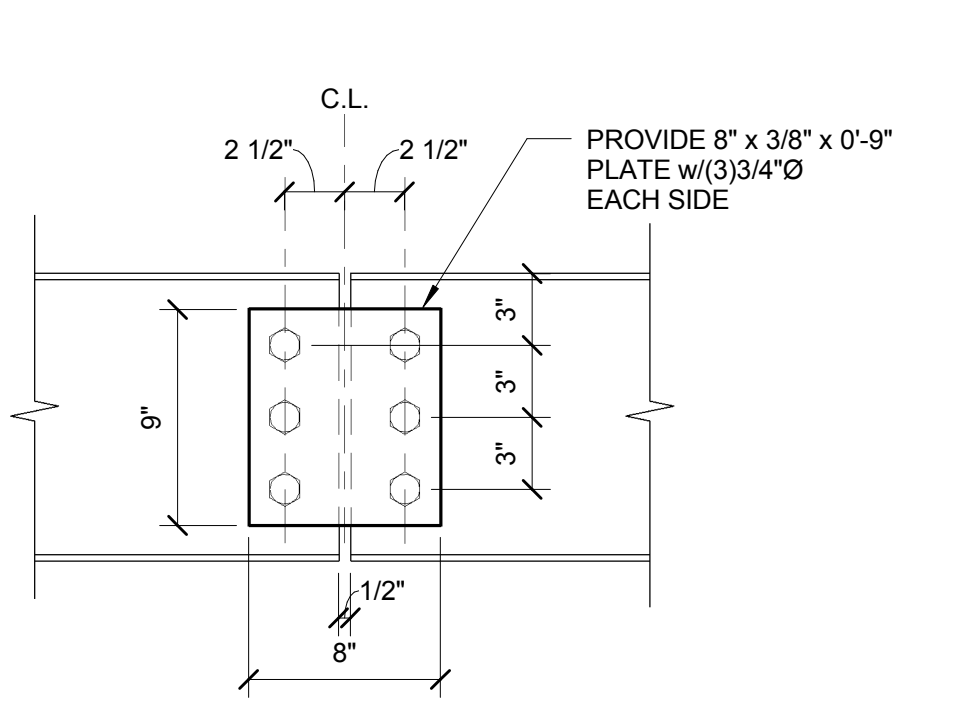
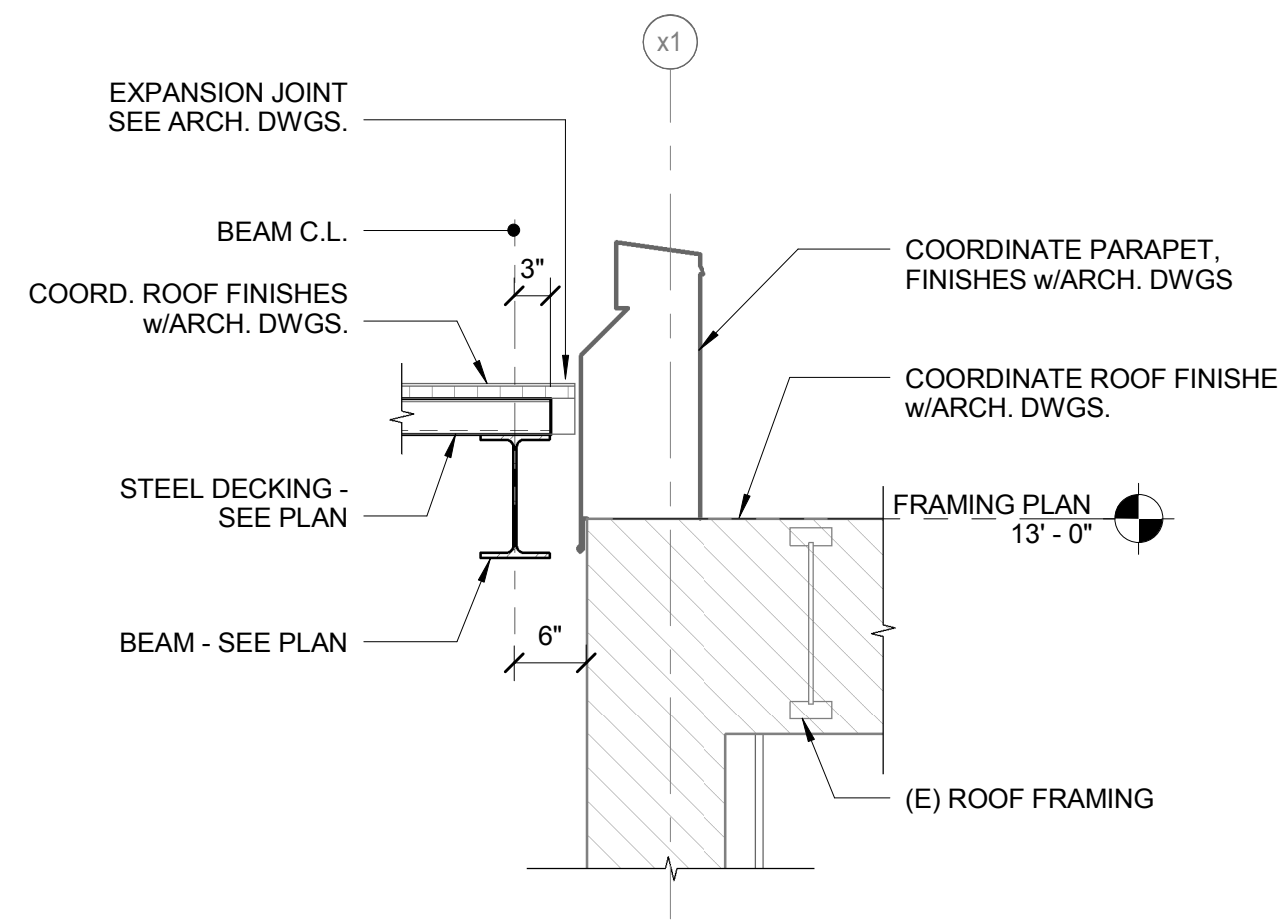


G1 TOP VIEW OF CAP PLATE AT CF/C5
 1 1/2" = 1'-0"

G4 DETAIL
 1 1/2" = 1'-0"

G7 DETAIL
 3/4" = 1'-0"

G9 DETAIL
 3/4" = 1'-0"

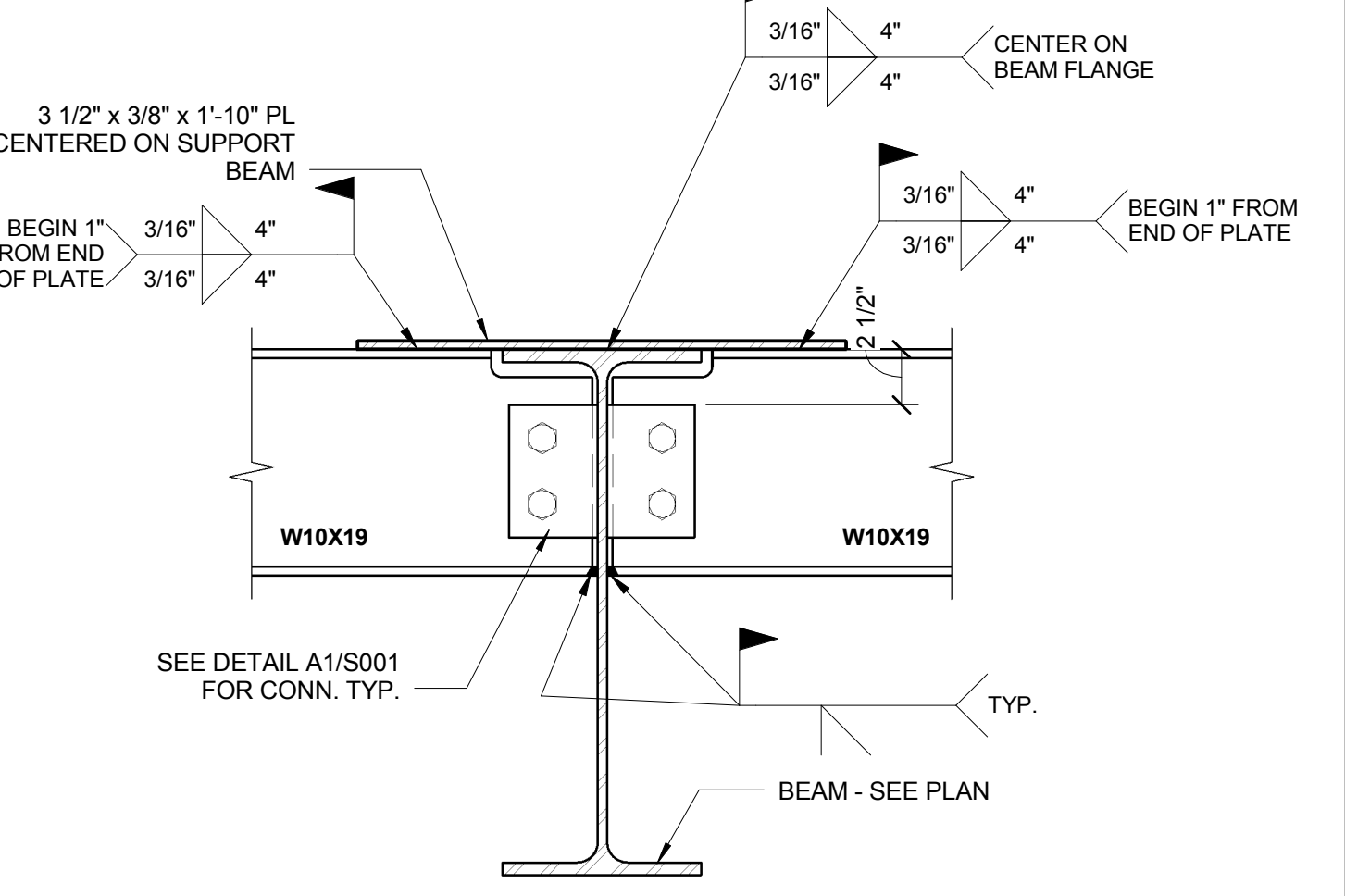
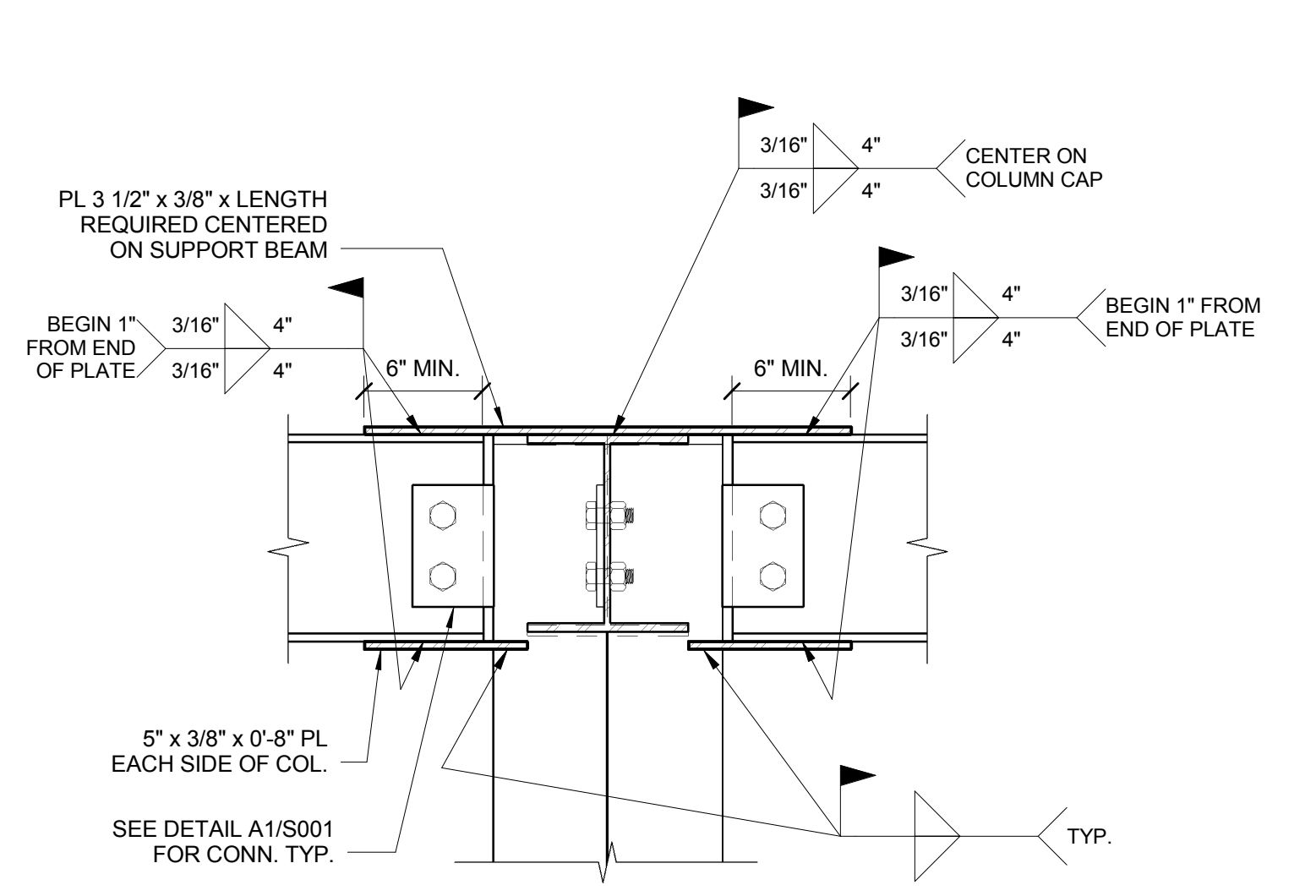


E1 DETAIL
 3/4" = 1'-0"

E4 TYPICAL SPLICE DETAIL
 1 1/2" = 1'-0"

E7 DETAIL
 1 1/2" = 1'-0"

E9 DETAIL
 3/4" = 1'-0"



A6 DETAIL AT COLUMN CG/C2
 1 1/2" = 1'-0"

A8 DETAIL
 1 1/2" = 1'-0"

4/30/2013 8:39:06 AM N:\Projects\2013\13008 - TruChoice Federal Credit Union - Park Ave\00 Drawing Files\13008S.rvt