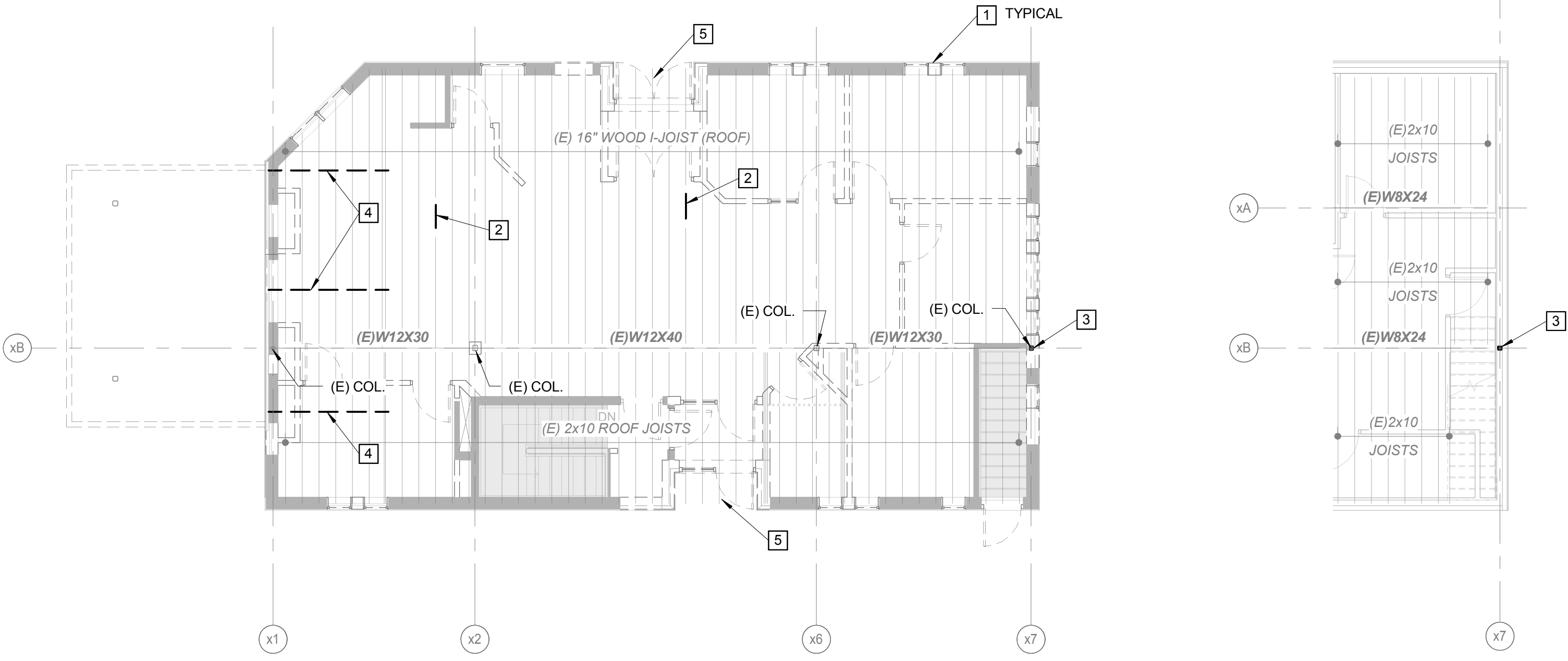
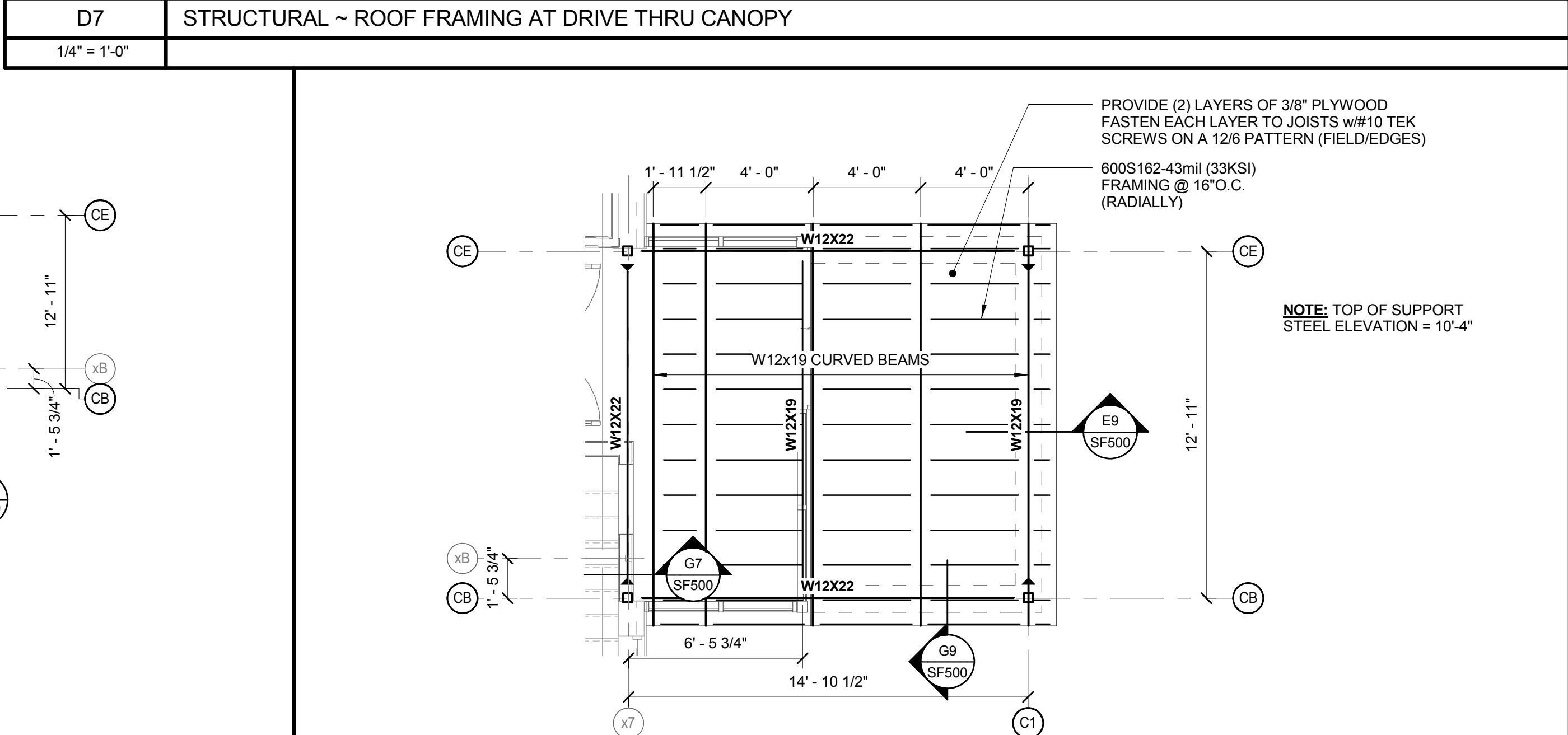
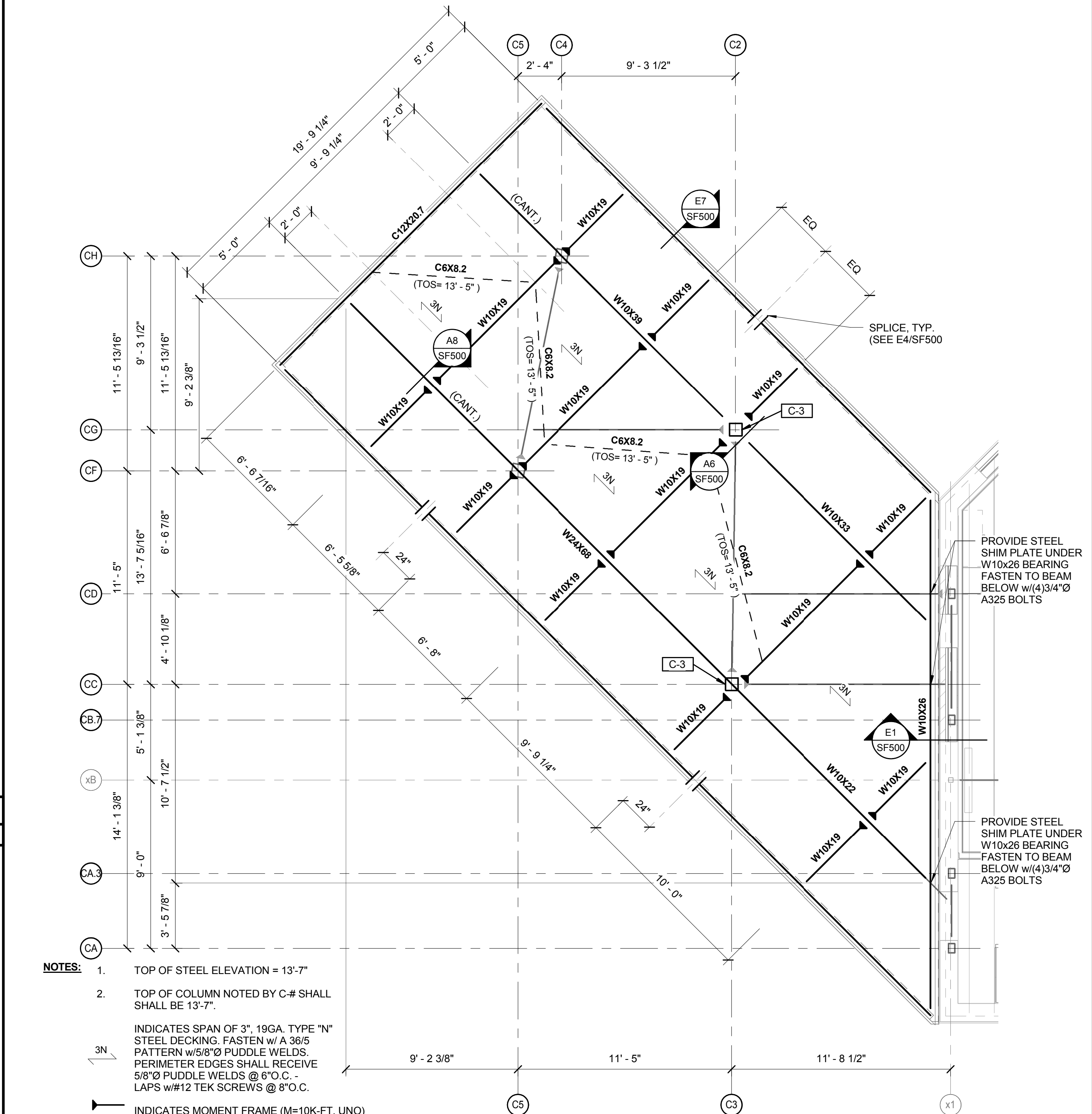
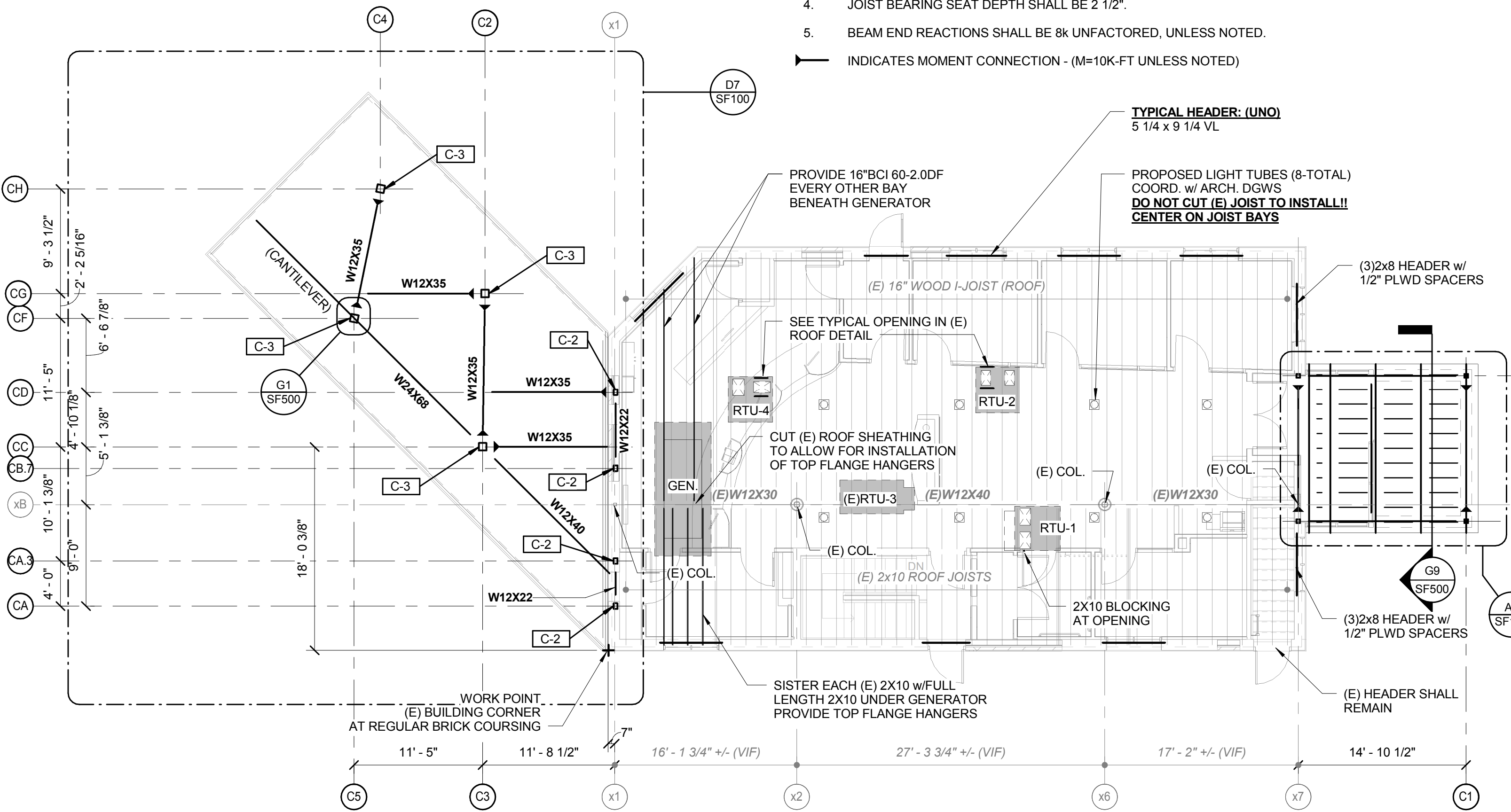


- 1 REMOVE EXISTING WOOD HEADER AND STEEL BRICK LINTEL (TYPICAL AT EXISTING OPENINGS ALONG BUILDING EXTERIOR) COORDINATE EXTENT OF REMOVAL w/ARCHITECTURAL DRAWINGS.
- 2 REMOVE EXISTING ROOF JOIST (LENGTH REQUIRED BY DUCT SIZE PENETRATION) REFER TO TYPICAL OPENING IN EXISTING ROOF DETAIL ON SHEET S001)
- 3 REMOVE PORTION OF EXISTING TUBE STEEL COLUMN FROM 1 1/2" BELOW FINISH FIRST FLOOR TO TOP OF PROPOSED HEADER
- 4 REMOVE EXISTING UNDERSLUNG FRAMING
- 5 REMOVE SIDEWALK SLAB-ON-GRADE THIS AREA



BRICK VENEER LINTEL SCHEDULE		
OPENING	ANGLE SIZE (GALV)	BEARING (EA. END)
0' - 3'-11"	L4"x4"x1/4" (LLV)	8" MIN.
4' - 7'-11"	L6"x4"x5/16" (LLV)	8" MIN.
8' - 11'-11"	L6"x4"x5/8" (LLV)	8" MIN.

1. BOTTOM OF STEEL ELEVATION AT THE DRIVE THRU CANOPY FRAMING SHALL MATCH BOTTOM OF W24x68 NOTED.
 2. SEE A5/S001 FOR FRAMED OPENINGS IN ROOF.
 3. SEE ARCHITECTURAL ROOF PLAN FOR ROOF DRAIN LOCATIONS.
 4. JOIST BEARING SEAT DEPTH SHALL BE 2 1/2".
 5. BEAM END REACTIONS SHALL BE 8k UNFACTORED, UNLESS NOTED.
- INDICATES MOMENT CONNECTION - (M=10K-FT UNLESS NOTED)



4/30/2013 8:39:03 AM N:\Projects\2013\1313008 - TruChoice Federal Credit Union - Park Ave\00 Drawing Files\13008S.rvt