



49 DARTMOUTH STREET
PORTLAND, MAINE 04101
207-775-1059
www.pdtarchts.com

COPYRIGHT
PDT Architects
Reuse or reproduction of the
contents of this document is not
permitted without written
permission of PDT Architects.

TruChoice FCU - 272 Park Avenue
272 Park Ave
Portland Maine 04041

JOB NO.
12042

DRWN. Author
CHK. Checker

SCALE:
1/4" = 1'-0"

ISSUE
04/26/2013

TITLE
CODE PLAN

SHEET
A001

ARCHITECTURAL CODE COMPLAINE SUMMARY

IBC International Building Code (Ammended per Maine Uniform Building and Energy Code - MUBEC)
NFPA 101 Life Safety Code 2009 Edition

Project Summary:

Addition of a secure entry vestibule with canopy, renovation of the first floor offices, lobby, and teller area within existing building footprint, demolition of old drive-thru canopy and addition of a new drive-thru canopy.

Existing Building Summary:

Occupancy Group	Group B Business
Construction Type	III B
Floor Area:	
First Floor	1,995 s.f.
Lower Level	1,958 s.f.
Building Height:	13 ft.
Lowest Level of Exit Discharge	1st story

Proposed New Project Summary

Vestibule Area:	80 s.f. (at grade)
Total Project Area:	14,033 s.f.
Occupancy Group:	Group B Business
Construction Type:	III B

Means of Egress

Maximum Travel Distance to Exit	150 feet (200' w/sprinklers)
Maximum Common Path of Travel	75 feet
Maximum Dead End Length	20 feet

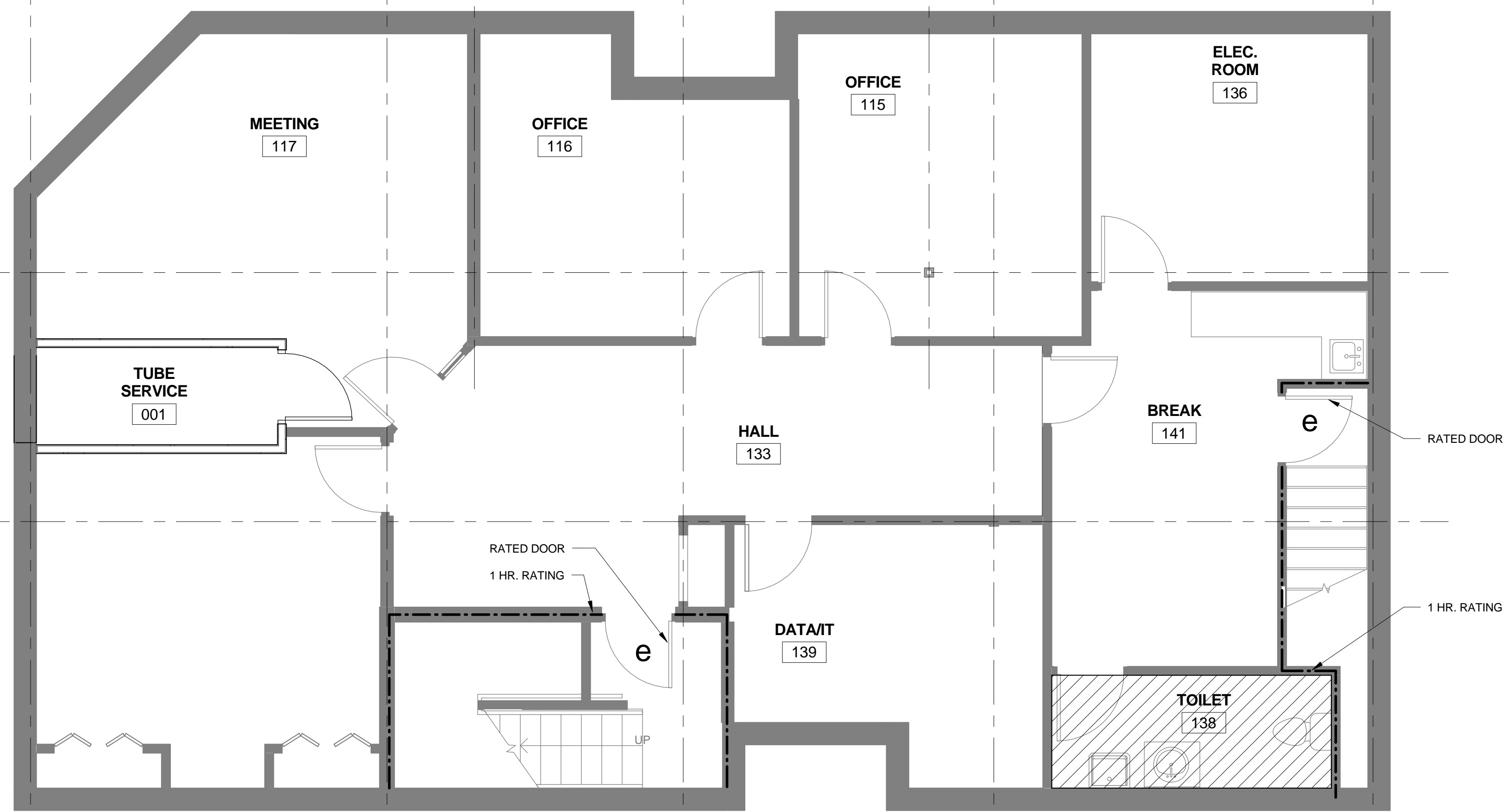
Occupant Load

Load Factor:	Business - 100 s.f. per person
Calculated Load:	
First Floor	20
Lower Level	20

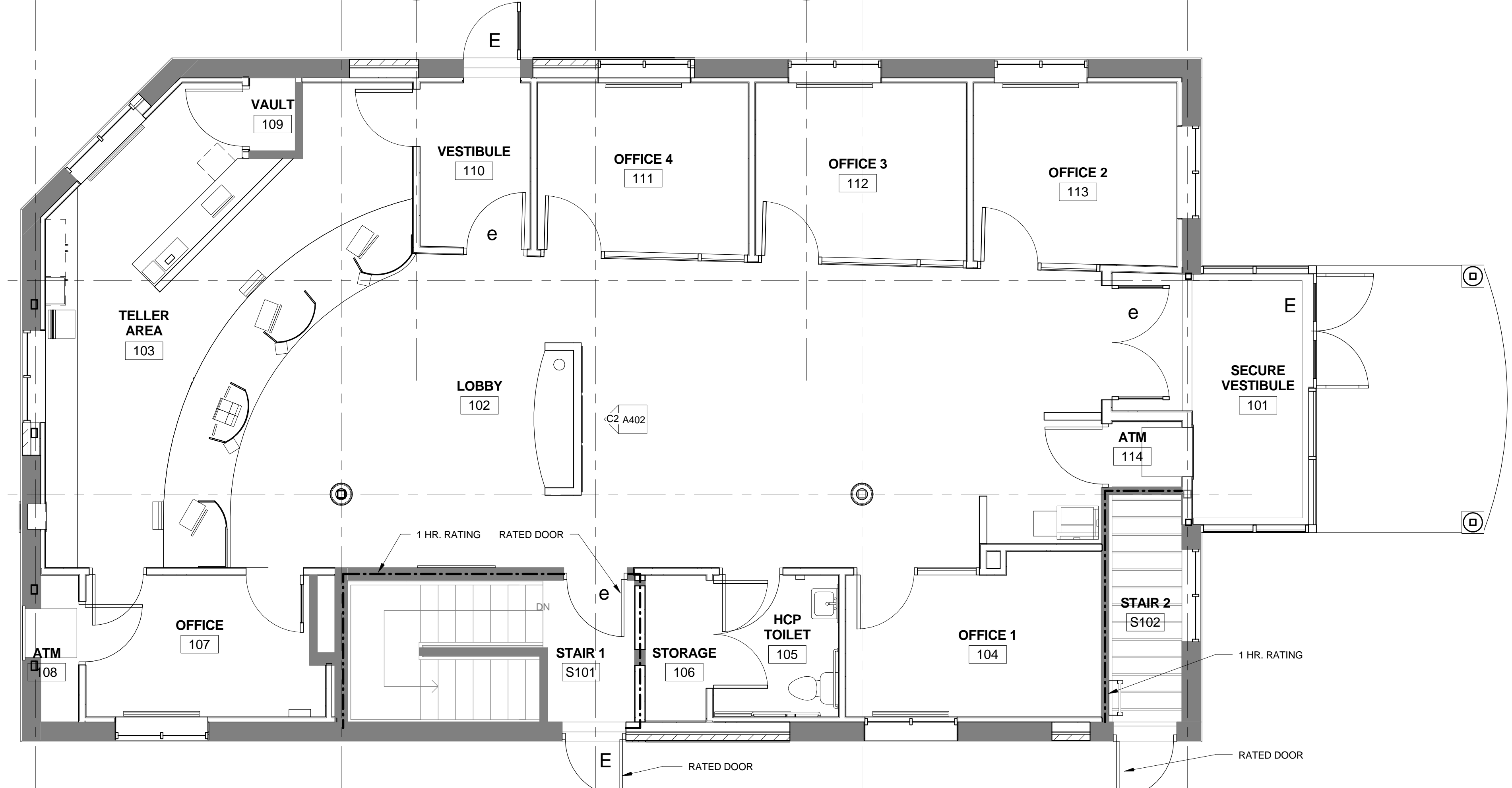
Required # exits per floor: 2

CODE LEGEND:

- 1 HR RATED PARTITION
- SMOKE PARTITION
- E EXIT DISCHARGE OR EXIT FROM A FLOOR
- e REQUIRED EXIT FROM AN AREA OR SPACE OR A MAJOR EXIT ACCESS DOOR



1 BASEMENT CODE PLAN
1/4" = 1'-0"



2 FIRST FLOOR CODE PLAN
1/4" = 1'-0"