

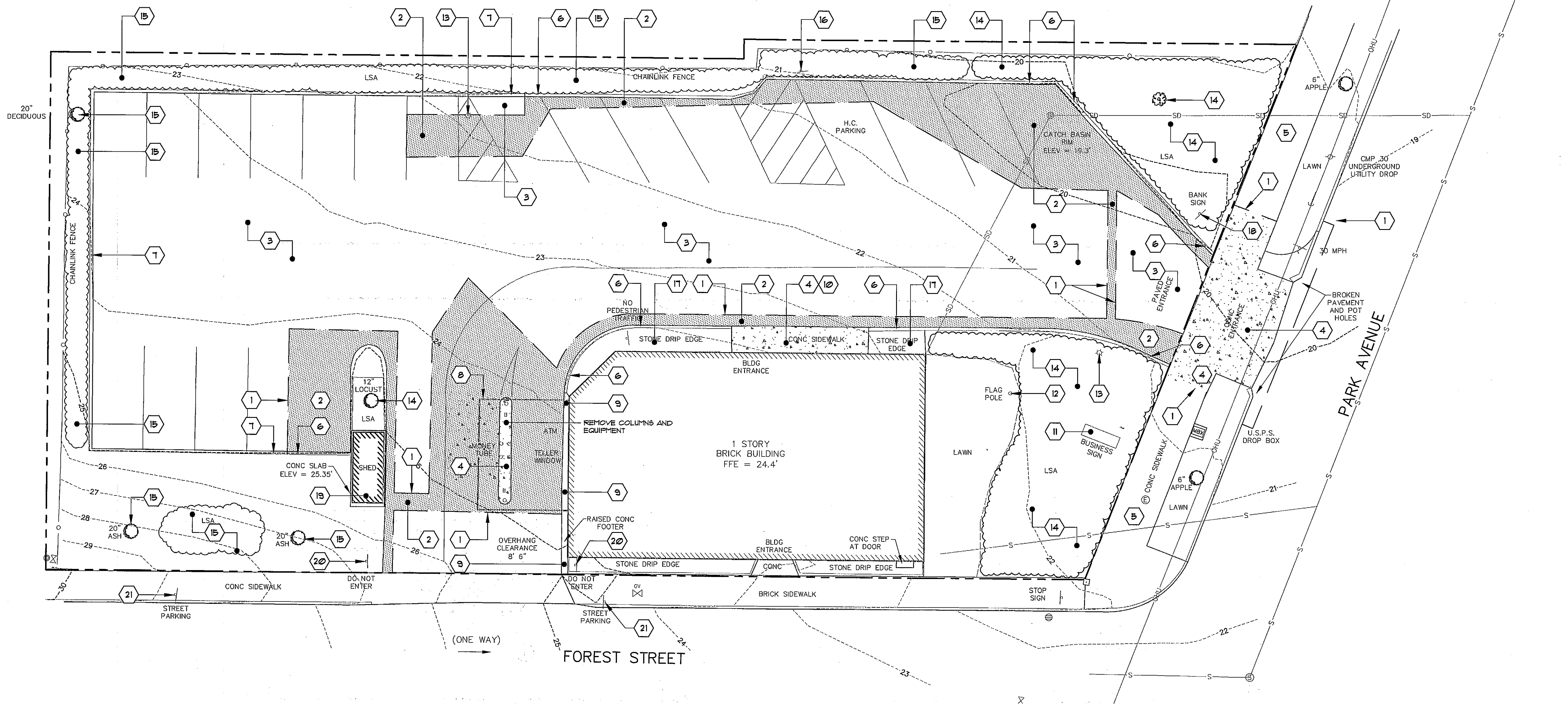
N/F
RAHEM LLC
TM 065 LOT 007

N/F
RAHEM LLC
TM 065 LOT 006

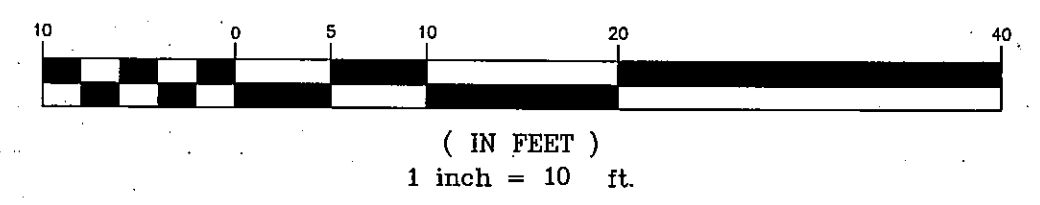
N/F
MORRIS ANDREW &
DAVID A. SHERIFF
TM 065 LOT 003

N/F
GALAPAGOS PROPERTIES LLC
TM 065 LOT 002

N/F
JAMES P. &
KATHERINE B. KILMARTIN
TM 065 LOT 013



GRAPHIC SCALE

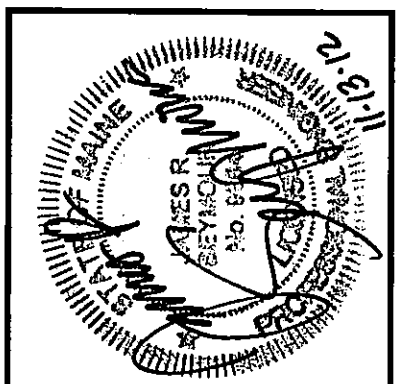


LEGEND

EXISTING	DESCRIPTION	PROPOSED
---	BOUNDARY LINE/ROLL	---
---	ADJUTER LINE/ROLL	---
---	SETBACK	---
---	MONUMENT	---
---	IRON PIPE/ROD	---
---	BUILDING SIGN	---
---	EDGE PAVEMENT	---
---	EDGE CONCRETE	---
---	PAVEMENT PAINT	---
---	CURBLINE	---
---	CHAIN LINK FENCE	---
---	STOCKADE FENCE	---
---	RETAINING WALL	---
---	GUARDRAIL	---
---	BOLLARD	---

DEMOLITION NOTES

- 1 SAWCUT EXISTING PAVING.
- 2 REMOVE EXISTING PAVING.
- 3 EXISTING PAVING TO REMAIN.
- 4 REMOVE EXISTING CONCRETE PAVING.
- 5 CONCRETE PAVING TO REMAIN.
- 6 REMOVE EXISTING CURBING.
- 7 EXISTING CURBING TO REMAIN.
- 8 REMOVE EXISTING BUILDING CANOPY.
- 9 EXISTING RAISED BUILDING FOUNDATION TO REMAIN.
- 10 REMOVE EXISTING CONCRETE STEPS.
- 11 REMOVE AND RETAIN EXISTING PRIMARY SIGN FOR RELOCATION.
- 12 REMOVE AND RETAIN EXISTING FLAGPOLE FOR RELOCATION.
- 13 REMOVE EXISTING LIGHT POLE; EXISTING LIGHT BASE AND CONDUIT TO REMAIN.
- 14 REMOVE EXISTING LANDSCAPING.
- 15 EXISTING LANDSCAPING TO REMAIN.
- 16 REMOVE AND RETAIN EXISTING ADA SIGN FOR RELOCATION.
- 17 REMOVE EXISTING DRIP EDGE GRAVEL.
- 18 REMOVE AND RETAIN EXISTING DIRECTIONAL SIGN FOR RELOCATION.
- 19 REMOVE EXISTING SHED AND CONCRETE SLAB. RETAIN SHED FOR RELOCATION ON SITE.
- 20 REMOVE "DO NOT ENTER" SIGN. RETAIN POST.
- 21 ON-STREET PARKING SIGN TO REMAIN.



RESUBMIT TO CITY	11/09/12	JRS	BY:	JRS	DATE:	09/25/12	STATUS:	INITIAL CITY SUBMITTAL
REV:								

THIS PLAN SHALL NOT BE MODIFIED WITHOUT WRITTEN PERMISSION FROM SEBAGO TECHNICS, INC. ANY ALTERATIONS AUTHORIZED OR OTHERWISE, SHALL BE AT THE USER'S SOLE RISK AND WITHOUT LIABILITY TO SEBAGO TECHNICS, INC.

SEBAGO TECHNICS
 WWW.SEBAGOTECHNICS.COM
 75 John Roberts Rd., Suite 1A
 South Berwick, ME 04986
 Tel: 207-200-2100 Fax: 207-783-8559

PROJECT NO. 12059
 DESIGN: JRS
 FIELD BOOK: JRS
 CHKD: JRS
 DRAWN: JRS
 ACQUA: JRS

DEMOLITION PLAN
 OF: **TRUCHOICE FEDERAL CREDIT UNION**
 272 PARK AVENUE
 PORTLAND, MAINE

FOR: **TRUCHOICE FEDERAL CREDIT UNION**
 272 PARK AVENUE
 PORTLAND, MAINE 04101

DATE: 09/12/12
 SCALE: 1" = 10'

SHEET 3 OF 11

12059DEMO.dwg, TAB: DEMO