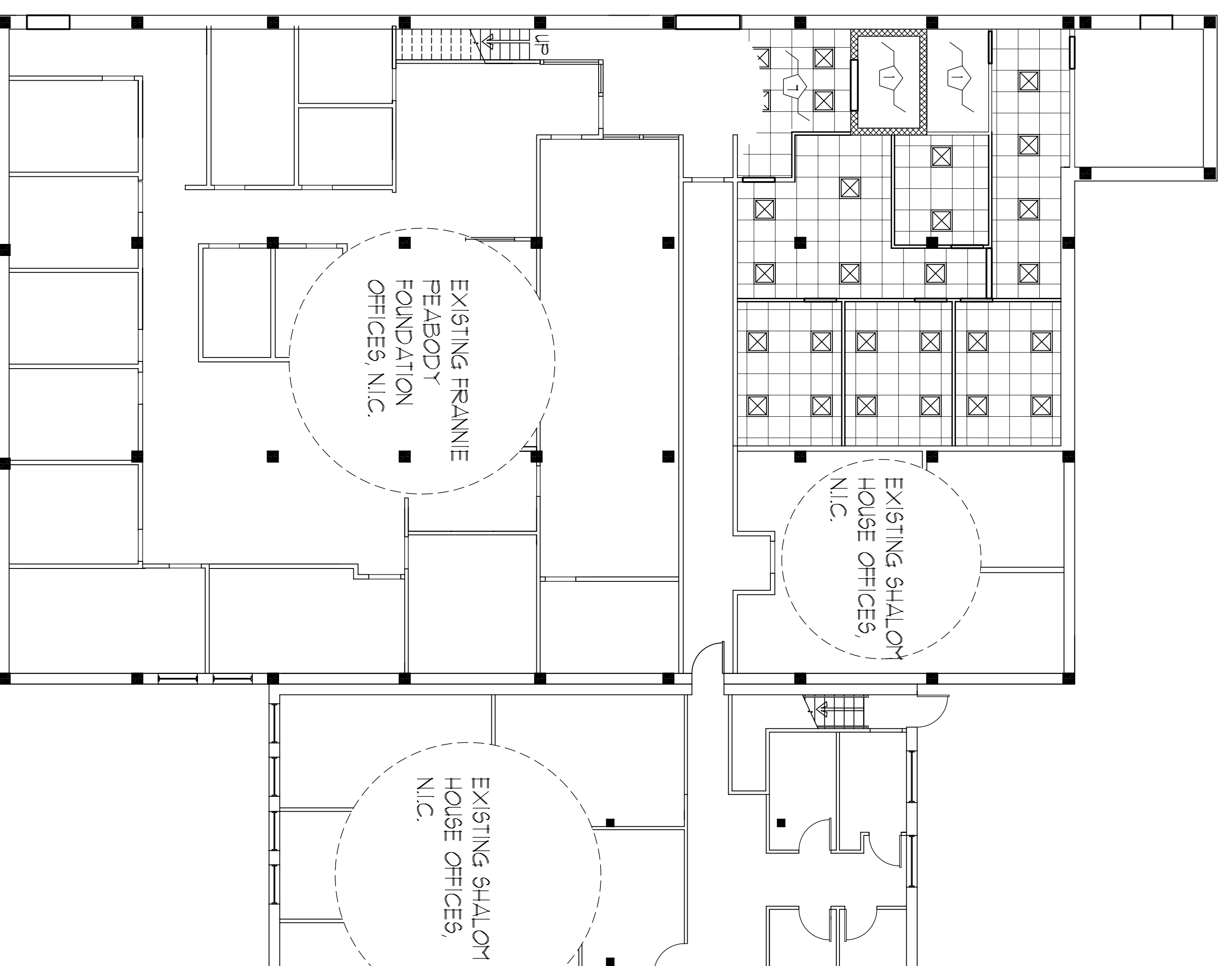


SECOND FLOOR REFLECTED CEILING PLAN  
SCALE: 3/8" = 1'-0"



FIRST FLOOR REFLECTED CEILING PLAN  
SCALE: 3/8" = 1'-0"

GENERAL NOTES

1. CEILING AT 8'-0" UNLESS NOTED OTHERWISE.

KEYED NOTES

- ① (1) RR CEILING - SEE DRAWING A3 FOR DETAIL.
- ② GB. SOFFIT @ 8'-10" AFF. - PTD.
- ③ 6" GB. SOFFIT @ 7'-6" AFF. - PTD.
- ④ CEILING @ 7'-6" AFF.
- ⑤ CEILING @ 8'-3" AFF.
- ⑥ 6" GB. SOFFIT - PTD.
- ⑦ CONTINUE EXISTING LOBBY CEILING IN THIS AREA

LEGEND

- 2x2 RECESSED FLUORESCENT LIGHT FIXTURE W/PARABOLIC LENS.
- 2x2 RECESSED FLUORESCENT LIGHT FIXTURE W/PARABOLIC LENS.
- PENDANT LIGHT FIXTURE (TYP. OF 3)
- SOFFIT.
- RECESSED WALL WASHER LIGHT FIXTURE.
- 2x2 ACOUSTIC TILE CEILING GRID.
- STEEL COLUMN. GB. UNWRAPPED - PTD.
- PENDANT LIGHT FIXTURE (TYP. OF 3)
- PENDANT (2) LAMP. 1x4 FLUORESCENT LIGHT FIXTURE WITH WIRE MESH GUARD.

Drawing:  
REFLECTED CEILING  
PLANS

Date:  
12/18/06

Scale:  
As Noted

Project:  
INTERIOR OFFICE FIT-UP  
106 GILMAN STREET  
PORTLAND, MAINE 04102

Architect:  
**ARCHETYPE, P.A.**  
**ARCHITECTS**  
INTERIOR RESOURCES  
48 Union Wharf Portland, Maine 04101  
(207) 772-6022 Fax (207) 772-4056

Owner:  
SHALOM HOUSE, INC.  
P.O. BOX 560  
PORTLAND, MAINE 04112

A.2