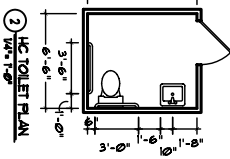


LEGEND

- LIMIT OF WORK LINE
- - - - - EXISTING WALL
- ===== WALL TO BE REMOVED
- NEW PARTITION WALL
- ▬ EXISTING STRUCTURAL COLUMN
- ⊕ NEW DOOR
- ⊖ EXISTING WINDOW
- ⊙ OFFICE CUBICLE (SIZE INDICATED)
- ⊗ EXIT SIGN
- ⊕ EMERGENCY LIGHTING
- ⊕ FINE EXTINGUISHER

KEYED NOTES

- ① HANDRAILS BOTH SIDES.



A.1	Drawing FIRST FLOOR PLAN	Date	Scale As Noted	Project SHALOM HOUSE, INC. INTERIOR OFFICE FIT-UP 321 VALLEY STREET PORTLAND, MAINE 04102	Architect ARCHETYPE, P.A. ARCHITECTS INTERIOR RESOURCES 48 Union Wharf Portland, Maine 04101 (207) 772-6822 Fax (207) 772-6886	Owner SHALOM HOUSE, INC. P.O. BOX 560 PORTLAND, MAINE 04112