

INTERIOR OFFICE FIT-UP SHALOM HOUSE, INC. 321 VALLEY STREET PORTLAND, MAINE

INDEX OF DRAWINGS

- Title Sheet, Code Analysis
- A1 First Floor Plan
- A2 Second Floor Plan
- A3 First and Second Floor Ceiling Plans
- A4 Interior Elevations, Schedules

OWNER

Shalom House, Inc.
PO Box 560
Portland, Maine 04101

ARCHITECT

Archetype, P.A.
48 Union Wharf
Portland, Maine 04101

CONTRACTOR

Thaxter Company
Portland, Maine 04101

PROJECT DESCRIPTION

THE PROJECT CONSISTS OF A 10,325 SQUARE FOOT OFFICE FIT-UP OF AN EXISTING BUSINESS OCCUPANCY. THE PREVIOUS OCCUPANT WAS WESTON-WALSH PUBLISHING, A PUBLISHER OF TEXT BOOKS. SHALOM HOUSE INC PROVIDES SERVICES TO THE MENTALLY ILL AND WILL USE THE FIT-UP SPACE AS THEIR OFFICES. SHALOM HOUSE'S USE OF THE SPACE IS SIMILAR TO THAT OF WESTON-WALSH.

THE BUILDING IS FULLY SPRINKLED. NO SITE WORK, BUILDING ADDITIONS OR STRUCTURAL CHANGES ARE PROPOSED.

CODE ANALYSIS - NFPA 1003

OCCUPANCY

CHAPTERS 38/39 - BUSINESS OCCUPANCIES

OCCUPANT LOAD

TABLE 1.3.12 - (1) OCCUPANT PER EACH 100 sq.

ARRANGEMENT OF MEANS OF EGRESS

SECTION 302.5.2J - DEAD END CORRIDORS. SHALL NOT EXCEED 50' IN A SPRINKLED BUILDING.

SECTION 302.5.3.2 - COMMON PATH OF TRAVEL. 100' IN A SPRINKLED BUILDING.

SECTION 302.6J - TRAVEL DISTANCE TO EXITS. 300' IN A SPRINKLED BUILDING.

SECTION 302.8 - ILLUMINATION OF MEANS OF EGRESS. REQUIRED PER SECTION 1.8.

SECTION 302.9 - EMERGENCY LIGHTING. NOT REQUIRED.

DETECTION ALARM & COMMUNICATIONS SYSTEMS

SECTION 303.4J - FIRE ALARM SYSTEM NOT REQUIRED.

EXTINGUISHMENT REQUIREMENTS

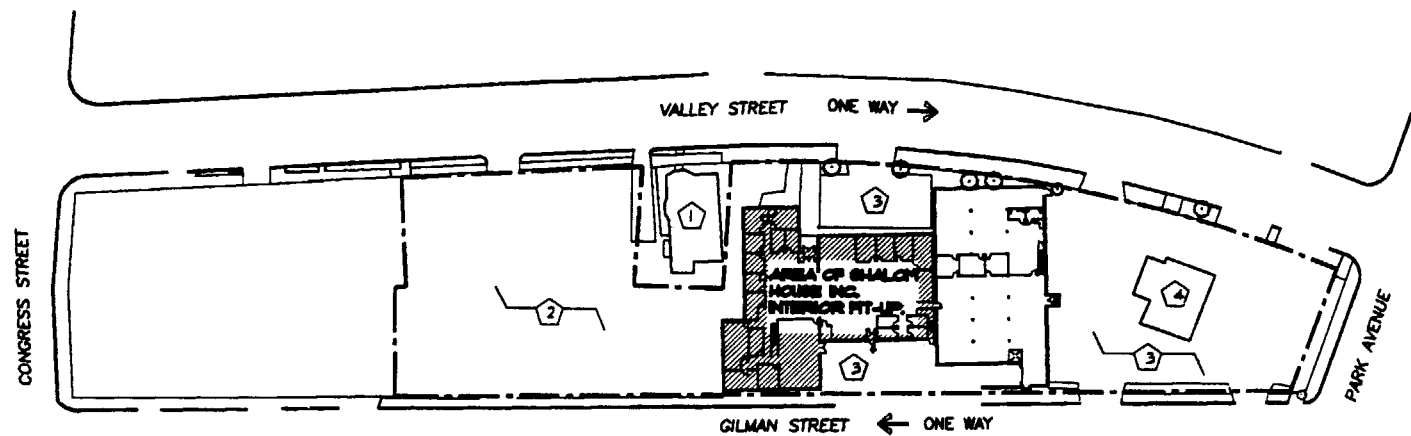
BUILDING IS FULLY SPRINKLED.

SECTION 303.5 - PORTABLE FIRE EXTINGUISHERS REQUIRED.

CODE ANALYSIS - BOCA 1999

USE GROUP

BOCA 304.0 - BUSINESS USE GROUP.



KEYED NOTES

- ① EXISTING (3) STORY WOOD APT. BUILDING.
- ② EXISTING VACANT LOT.

- ③ EXISTING PAVED PARKING LOT.
- ④ EXISTING (1) STORY CMU BUILDING.

LEGEND

PROPERTY LINE - - - - -

LOCATION PLAN
SCALE: NO SCALE



65 D 018

SEP 22 2004

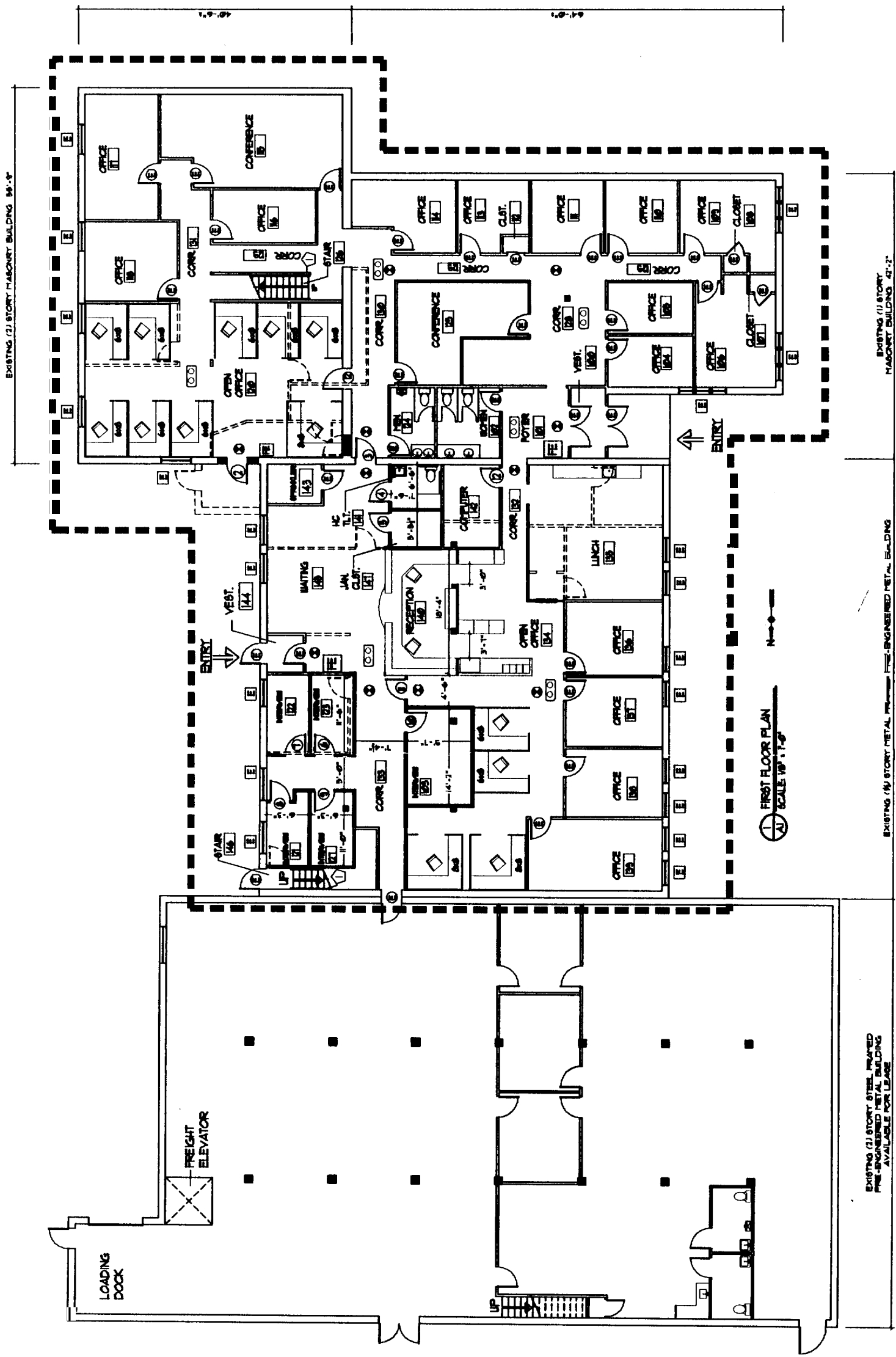
Issue Date: 09/27/04

Project:
SHALOM HOUSE, INC.
INTERIOR OFFICE FIT-UP
321 VALLEY STREET
PORTLAND, MAINE 04102

Architect:
ARCHETYPE, P.A.
ARCHITECTS
INTERIOR RESOURCES
48 Union Street - Portland, Maine 04101
(207) 773-0022 Fax (207) 773-4008

Owner:
SHALOM HOUSE, INC.
P.O. BOX 560
PORTLAND, MAINE 04112

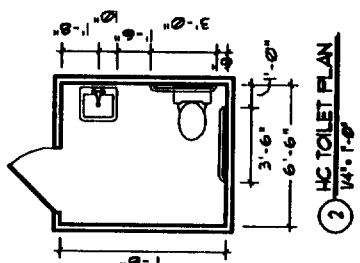
SEP 27 2012



- LEGEND**
- LIMIT OF WORK LINE
 - EXISTING WALL
 - - - WALL TO BE REMOVED
 - ▬ PARTITION WALL
 - EXISTING STRUCTURAL COLUMN
 - ⊙ EXISTING DOOR
 - ⊙ EXISTING WINDOW
 - OFFICE CUBICLE (SIZE INDICATED)
 - ⊙ EXIT SIGN
 - ⊙ EMERGENCY LIGHTING
 - ⊙ FIRE EXTINGUISHER

KEYED NOTES

- ① HANDRAILS BOTH SIDES



EXISTING (1) STORY STEEL FRAMED PRE-ENGINEERED METAL BUILDING AVAILABLE FOR LEASE

EXISTING (4) STORY METAL FRAMED PRE-ENGINEERED METAL BUILDING

EXISTING (1) STORY MASONRY BUILDING 27'-2"

EXISTING (2) STORY MASONRY BUILDING 36'-8"

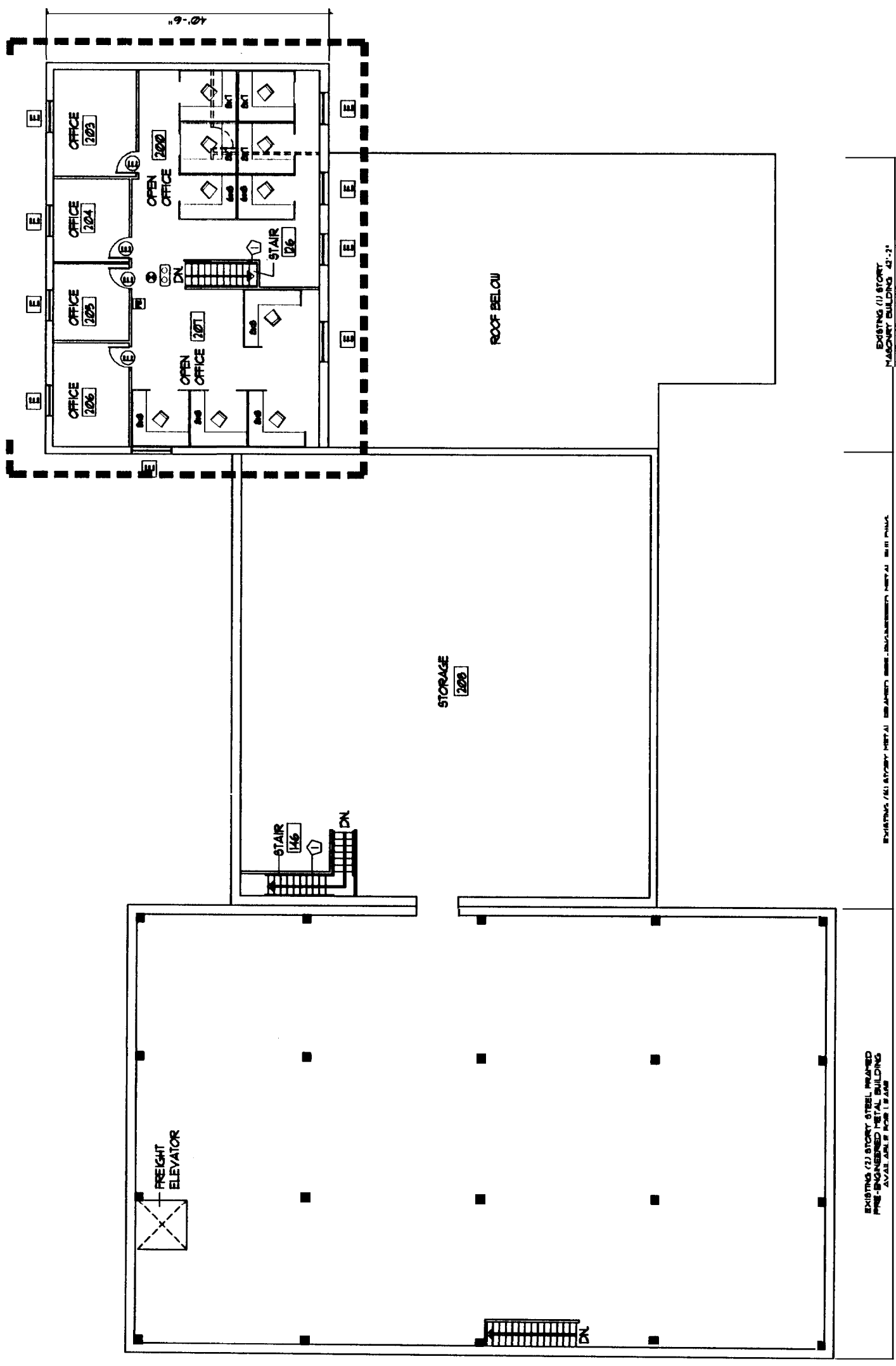
⊙ FIRST FLOOR PLAN
SCALE 1/4" = 1'-0"

Drawings SHALOM HOUSE, INC. 321 VALLEY STREET PORTLAND, MAINE 04102 Project:	Dates
	Scales As Noted
Architect: ARCHETYPE, P.A. 48 Union Street Portland, Maine 04101 (207) 773-8222 Fax (207) 773-4050	Owner: SHALOM HOUSE, INC. P.O. BOX 560 PORTLAND, MAINE 04112

SEP 2 2 2004

REVISED

⊕ SECOND FLOOR PLAN
SCALE: 1/8" = 1'-0"



- LEGEND**
- LIMIT OF WORK LINE
 - EXISTING WALL
 - - - WALL TO BE REMOVED
 - EXISTING STRUCTURAL COLUMN
 - ⊕ EXISTING DOOR
 - ⊕ EXISTING WINDOW
 - ◇ OFFICE CUBICLE (SIZE INDICATED)
 - ⊕ EXIT SIGN
 - ⊕ EMERGENCY LIGHTING
 - ⊕ FIRE EXTINGUISHER
- KEYED NOTES**
- ① HANDRAILS BOTH SIDES.

EXISTING (1) STORY STEEL FRAMED
PRE-ENGINEERED METAL BUILDING
AVAILABLE FROM 1/8" AND

EXISTING (1) STORY
MASONRY BUILDING 43'-3"

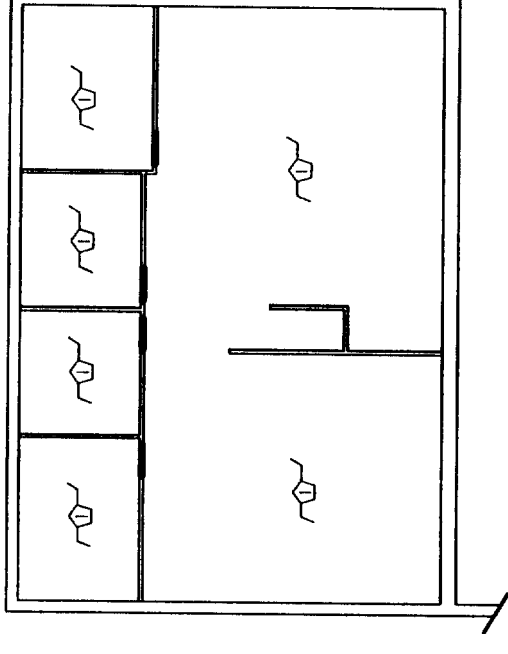
Date:	
Sheet As Noted	

Project: SHALOM HOUSE, INC.
INTERIOR OFFICE FIT-UP
321 VALLEY STREET
PORTLAND, MAINE 04102

Architect: ARCHETYPE, P.A.
ARCHITECTS
48 Union Street Portland, Maine 04101
(207) 773-0022 Fax (207) 773-4088

Owner: SHALOM HOUSE, INC.
P.O. BOX 560
PORTLAND, MAINE 04112

SEP 2 2 2004

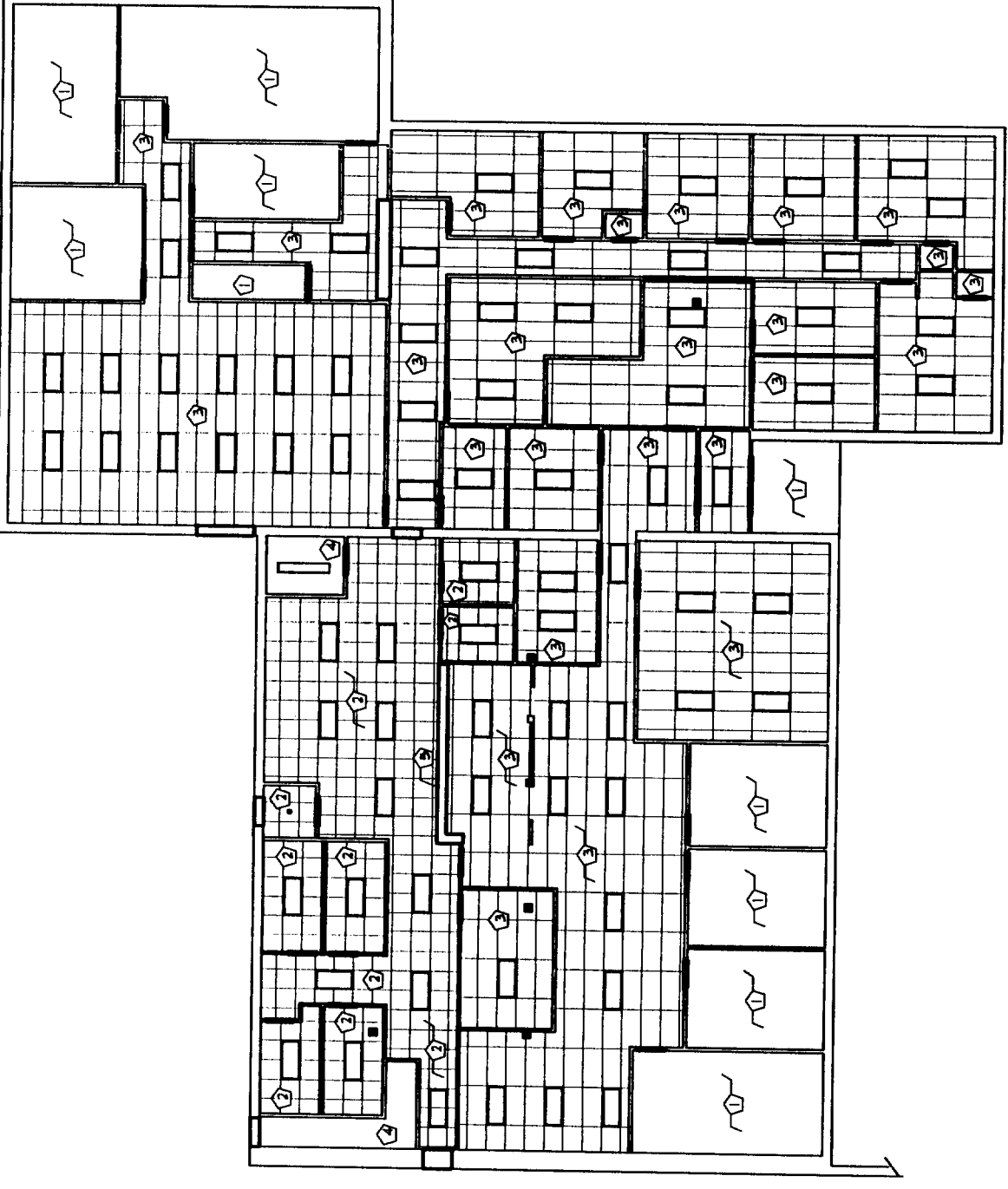


2 SECOND FLOOR CEILING PLAN
SCALE 1/8" = 1'-0"

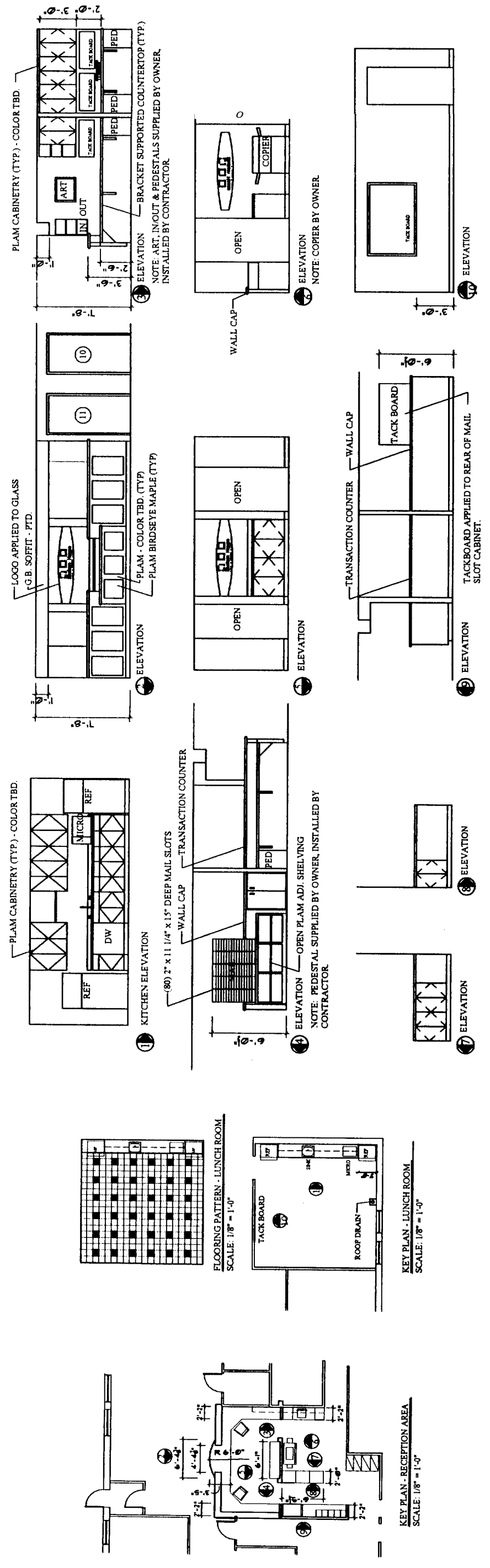
- LEGEND
- WALL
 - SORBIT
 - EXISTING STRUCTURAL COLUMN
 - 2X4 RECESSED FLUORESCENT FIXTURE
 - RECESSED DOWNLIGHT
 - 1X4 SURFACE MTD. FLUORESCENT FIXTURE

KEYED NOTES

- 1 REMOVE EXISTING TILES, EXISTING 2X4 GRID TO REMAIN. INSTALL 2X4 TILES - ARTISTRONG "SECOND LOOK" (2X2 LOOK).
- 2 2X2 GRID WITH 2X2 TILES.
- 3 2X4 GRID WITH 2X4 TILES.
- 4 EXISTING CEILING TO REMAIN.
- 5 G.B. SORBIT (PTD.) @ 6'-0" AFF.



1 1st FLOOR REFLECTED CEILING PLAN
SCALE 1/8" = 1'-0"



FINISH SCHEDULE

KEY	TYPE	FLOOR	WALL COLOR	KEY	TYPE	FLOOR	WALL COLOR	KEY	TYPE	FLOOR	WALL COLOR	KEY	TYPE	FLOOR	WALL COLOR	KEY	TYPE	FLOOR	WALL COLOR	
106	VESTIBLE	EXISTING	P-1	106	OFFICE	CPT-1	P-2	106	CORRIDOR	CPT-2	P-1	106	CORRIDOR	CPT-2	P-1	106	RECEPTION	CPT-2	P-1	
107	FOYER	EXISTING	P-1	107	OFFICE	CPT-1	P-2	107	CORRIDOR	CPT-2	P-1	107	CORRIDOR	CPT-2	P-1	107	HC TLT.	CT-1/CT-2	GT-1/P-3	P-1
108	WOMEN	EXISTING	P-3	108	OFFICE	CPT-1	P-2	108	CORRIDOR	CPT-2	P-1	108	CORRIDOR	CPT-2	P-1	108	COMPUTER	VCT-1/2	P-1	P-1
109	INTERVIEW	CPT-1	P-2	109	OFFICE	CPT-1	P-2	109	CORRIDOR	CPT-2	P-1	109	CORRIDOR	CPT-2	P-1	109	SPRINKLER	EXISTING	P-1	P-2
110	OFFICE	CPT-1	P-2	110	OFFICE	CPT-1	P-2	110	CORRIDOR	CPT-2	P-1	110	CORRIDOR	CPT-2	P-1	110	VESTIBLE	EXISTING	P-1	P-2
111	OFFICE	CPT-1	P-2	111	CONFERENCE	CPT-2	P-4	111	CORRIDOR	CPT-2	P-1	111	CORRIDOR	CPT-2	P-1	111	WAITING	EXISTING	P-1	P-2
112	OFFICE	CPT-1	P-2	112	CONFERENCE	CPT-2	P-4	112	CORRIDOR	CPT-2	P-1	112	CORRIDOR	CPT-2	P-1	112	STAIR	CPT-2	P-1	P-2
113	OFFICE	CPT-1	P-2	113	CONFERENCE	CPT-2	P-4	113	OFFICE	CPT-1	P-2	113	OFFICE	CPT-1	P-2	113	JANITOR'S CLOSET	EXISTING	P-1	P-2
114	OFFICE	CPT-1	P-2	114	CONFERENCE	CPT-2	P-4	114	OFFICE	CPT-1	P-2	114	OFFICE	CPT-1	P-2	114	NOT USED	VCT-1/2	P-1	P-1
115	OFFICE	CPT-1	P-2	115	CONFERENCE	CPT-2	P-4	115	OFFICE	CPT-1	P-2	115	OFFICE	CPT-1	P-2	115	NOT USED	EXISTING	P-1	P-1
116	OFFICE	CPT-1	P-2	116	CONFERENCE	CPT-2	P-4	116	OFFICE	CPT-1	P-2	116	OFFICE	CPT-1	P-2	116	NOT USED	EXISTING	P-1	P-1
117	OFFICE	CPT-1	P-2	117	CONFERENCE	CPT-2	P-4	117	OFFICE	CPT-1	P-2	117	OFFICE	CPT-1	P-2	117	NOT USED	EXISTING	P-1	P-1
118	OFFICE	CPT-1	P-2	118	CONFERENCE	CPT-2	P-4	118	OFFICE	CPT-1	P-2	118	OFFICE	CPT-1	P-2	118	NOT USED	EXISTING	P-1	P-1
119	OFFICE	CPT-1	P-2	119	CONFERENCE	CPT-2	P-4	119	OFFICE	CPT-1	P-2	119	OFFICE	CPT-1	P-2	119	NOT USED	EXISTING	P-1	P-1

DOOR SCHEDULE

KEY	TYPE	SIZE	DOOR		FRAME	FINISH	HARDWARE FUNCTION	REMARKS
			MATL.	FINISH				
1	A	3'-0" x 7'-0"	MFL	PTD.	A	UNT.	PTD.	NOT USED
2	B	3'-0" x 7'-0"	BC	PTD.	A	UNT.	PTD.	OPEN OFFICE 126 TO EXTERIOR
3	B	3'-0" x 7'-0"	BC	PTD.	A	UNT.	PTD.	WAITING 148 TO CORR. 134; DOOR NOTE 1.
4	B	3'-0" x 7'-0"	BC	PTD.	A	UNT.	PTD.	HC TLT. 141 TO WAITING 145; DOOR NOTE 1.
5	B	3'-0" x 7'-0"	BC	PTD.	A	UNT.	PTD.	JAN. CLST. 141 TO WAITING 145.
6	B	3'-0" x 7'-0"	BC	PTD.	A	UNT.	PTD.	CORR. 135 TO INTERVIEW 123.
7	B	3'-0" x 7'-0"	BC	PTD.	A	UNT.	PTD.	CORR. 135 TO INTERVIEW 121.
8	B	3'-0" x 7'-0"	BC	PTD.	A	UNT.	PTD.	CORR. 135 TO INTERVIEW 121.
9	B	3'-0" x 7'-0"	BC	PTD.	A	UNT.	PTD.	CORR. 135 TO INTERVIEW 121.
10	B	3'-0" x 7'-0"	BC	PTD.	A	UNT.	PTD.	CORR. 135 TO INTERVIEW 121.
11	B	3'-0" x 7'-0"	BC	PTD.	A	UNT.	PTD.	OPEN OFFICE 134 TO CORR. 133; DOOR NOTE 1.
12	B	3'-0" x 7'-0"	BC	PTD.	A	UNT.	PTD.	CORR. 132 TO COMPUTER 142.
E	B	3'-0" x 7'-0"	BC	PTD.	A	UNT.	PTD.	EXISTING DOOR TO REMAIN

