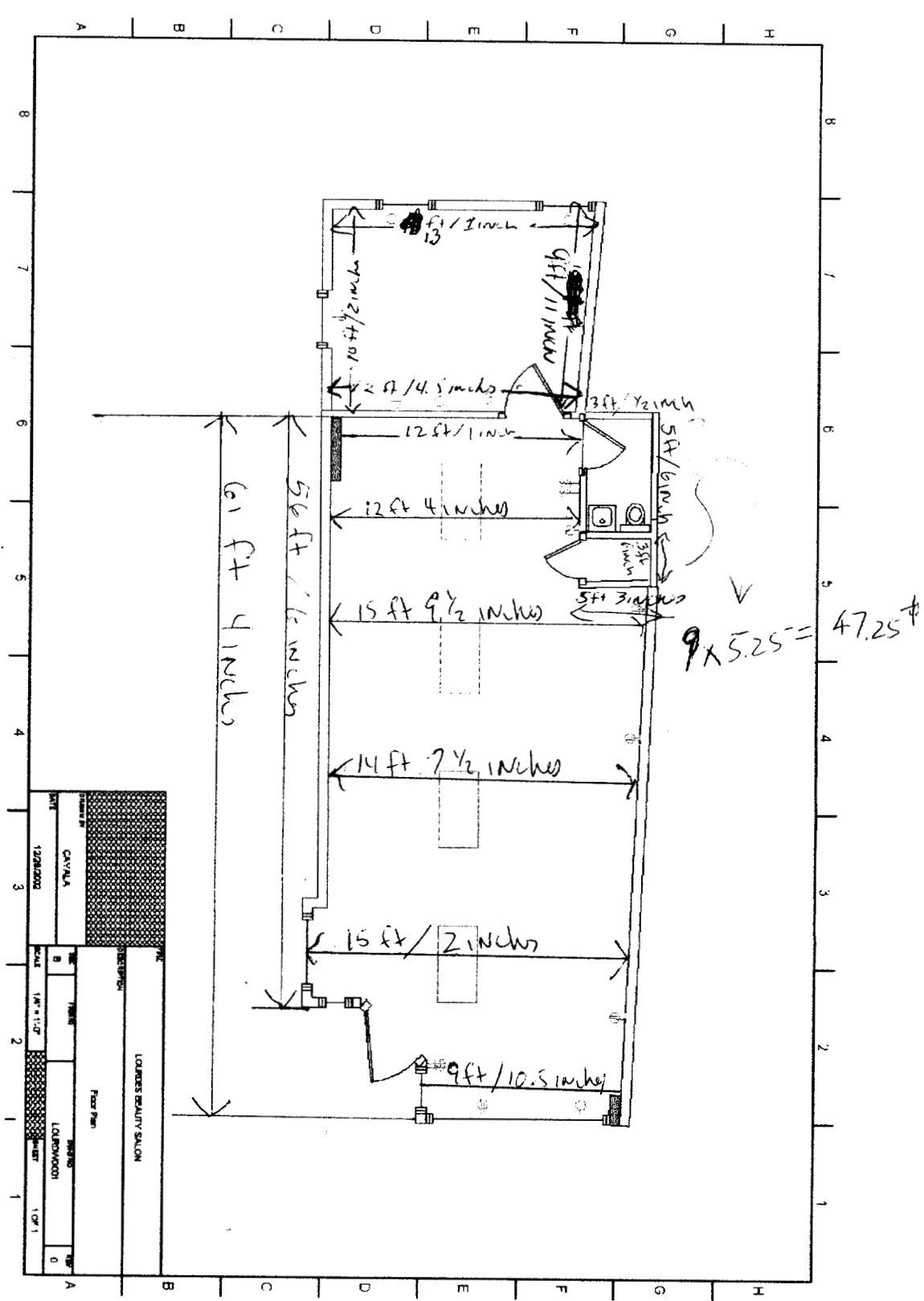


131 Congress St  
 John Carpenter  
 207-831-2319



$$9 \times 12.33 = 111 \text{ ft}^2$$

$$15 \times 47.5 = 712.5 \text{ ft}^2$$

$$4.83 \times 9.83 = 47.5 \text{ ft}^2$$

Back Room

$$10 \times 12.75 = 127.5 \text{ ft}^2$$

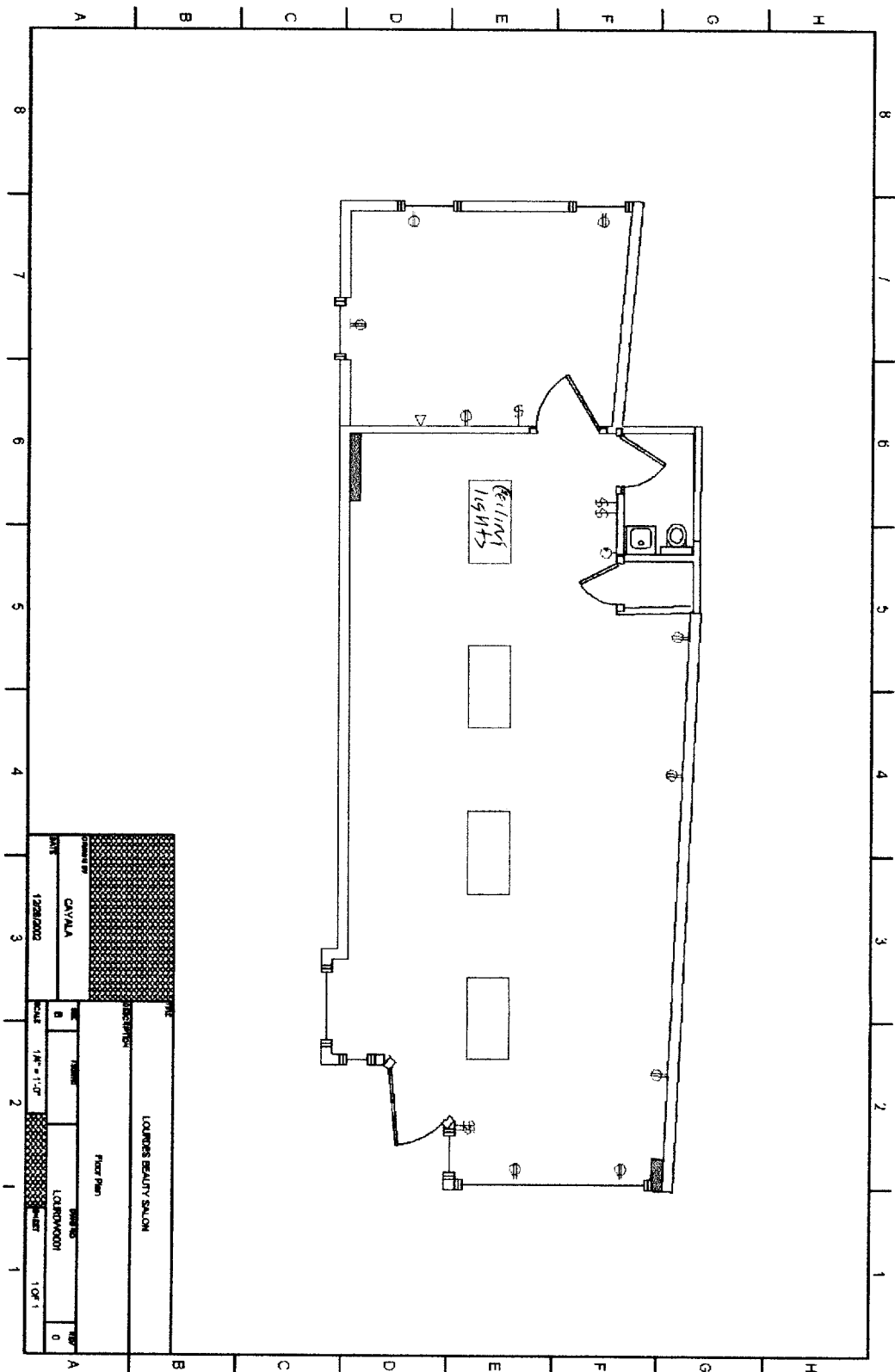
$$998.5 \text{ ft}^2 - 334 \text{ ft}^2 = 2.99$$

rec'd  
 1/9/03

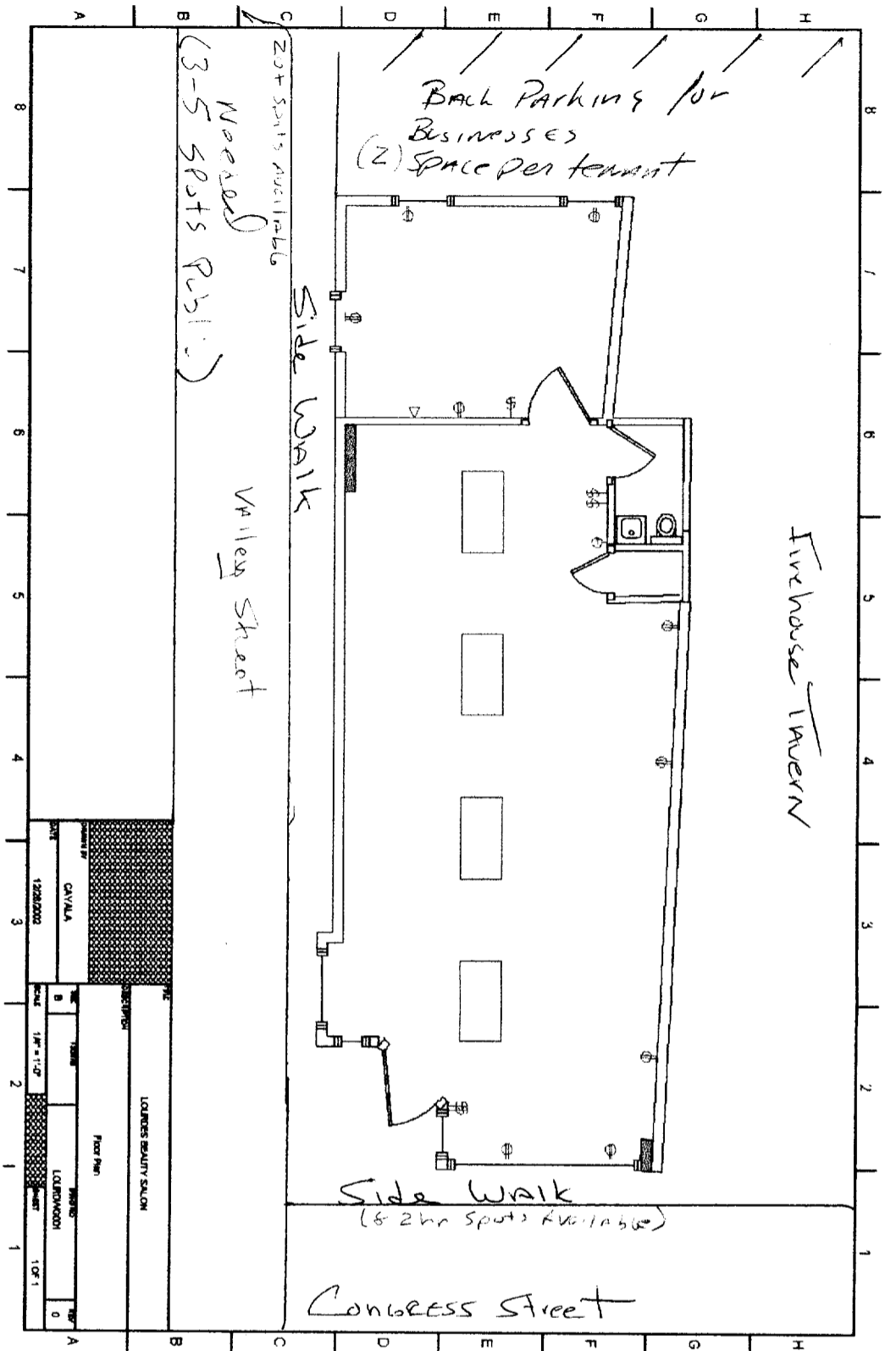
1/9/03 -  
 letter showing  
 3 off street parking  
 spaces  
 or 3 parking  
 spaces  
 required



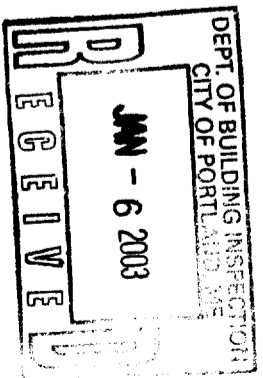
*BEFORE - NO structural changes*



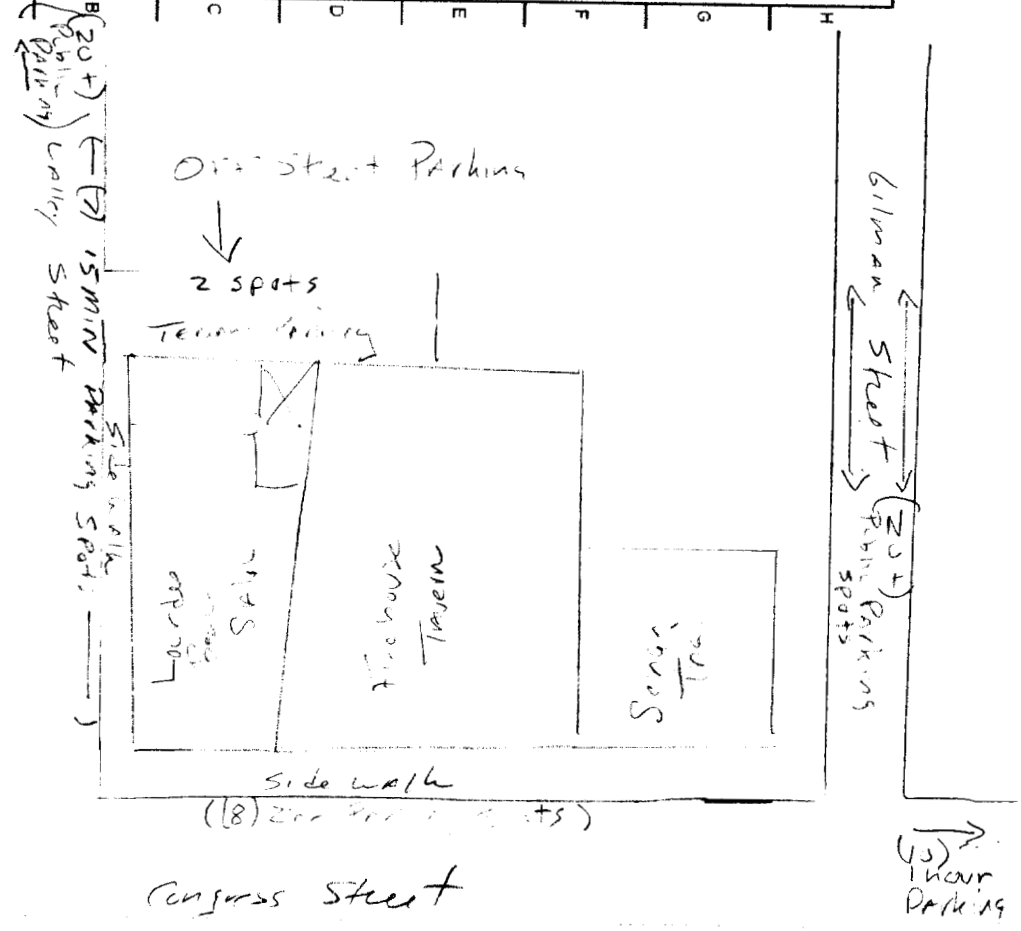
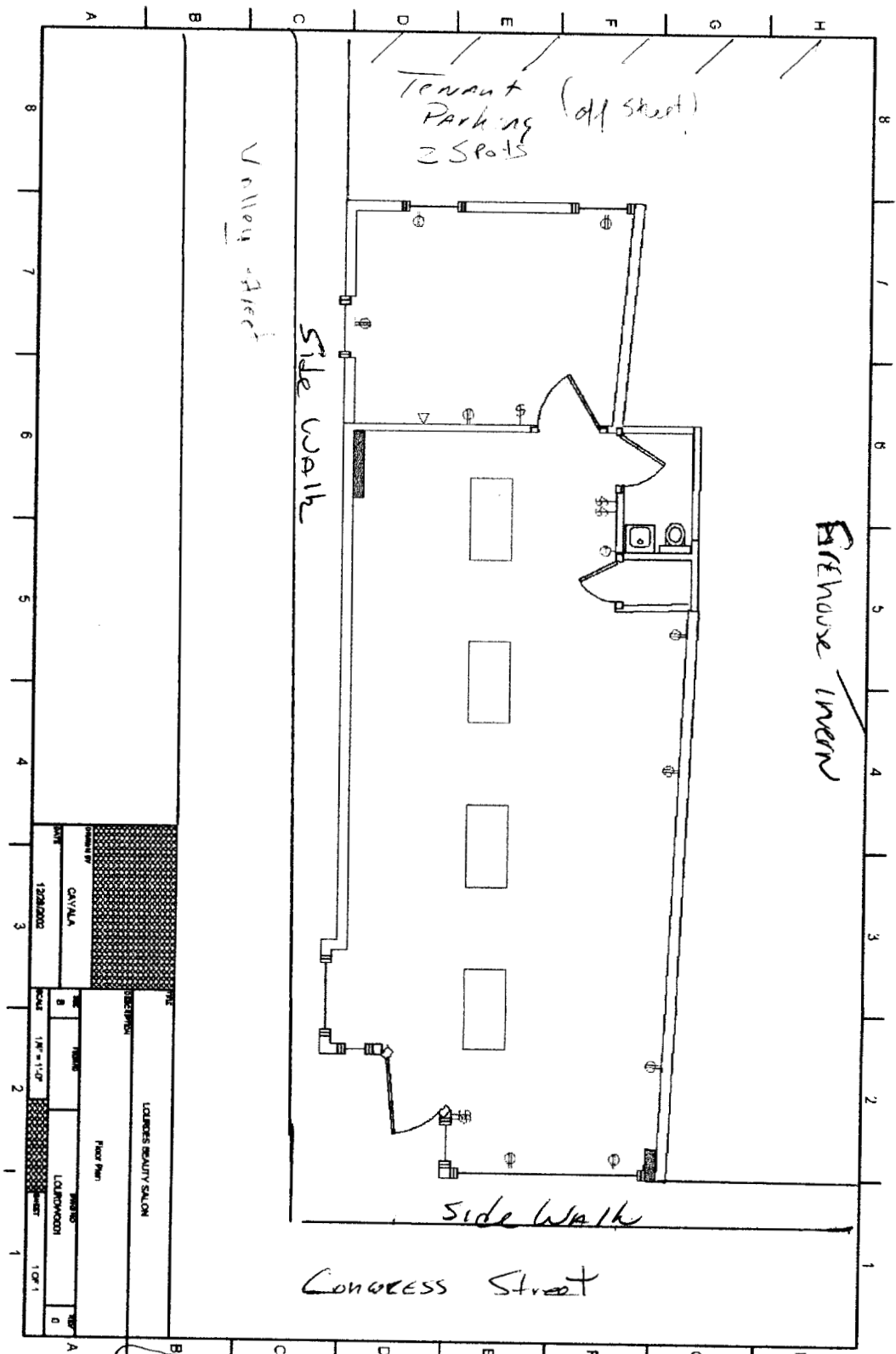
DEPT. OF BUILDING INSPECTION  
CITY OF PORTLAND  
JAN - 6 2003  
RECEIVED



REQUIRED PARKING



DIF Street Parking



DEPT. OF BUILDING  
CITY OF PORTLAND  
RECEIVED  
JAN - 6 2003