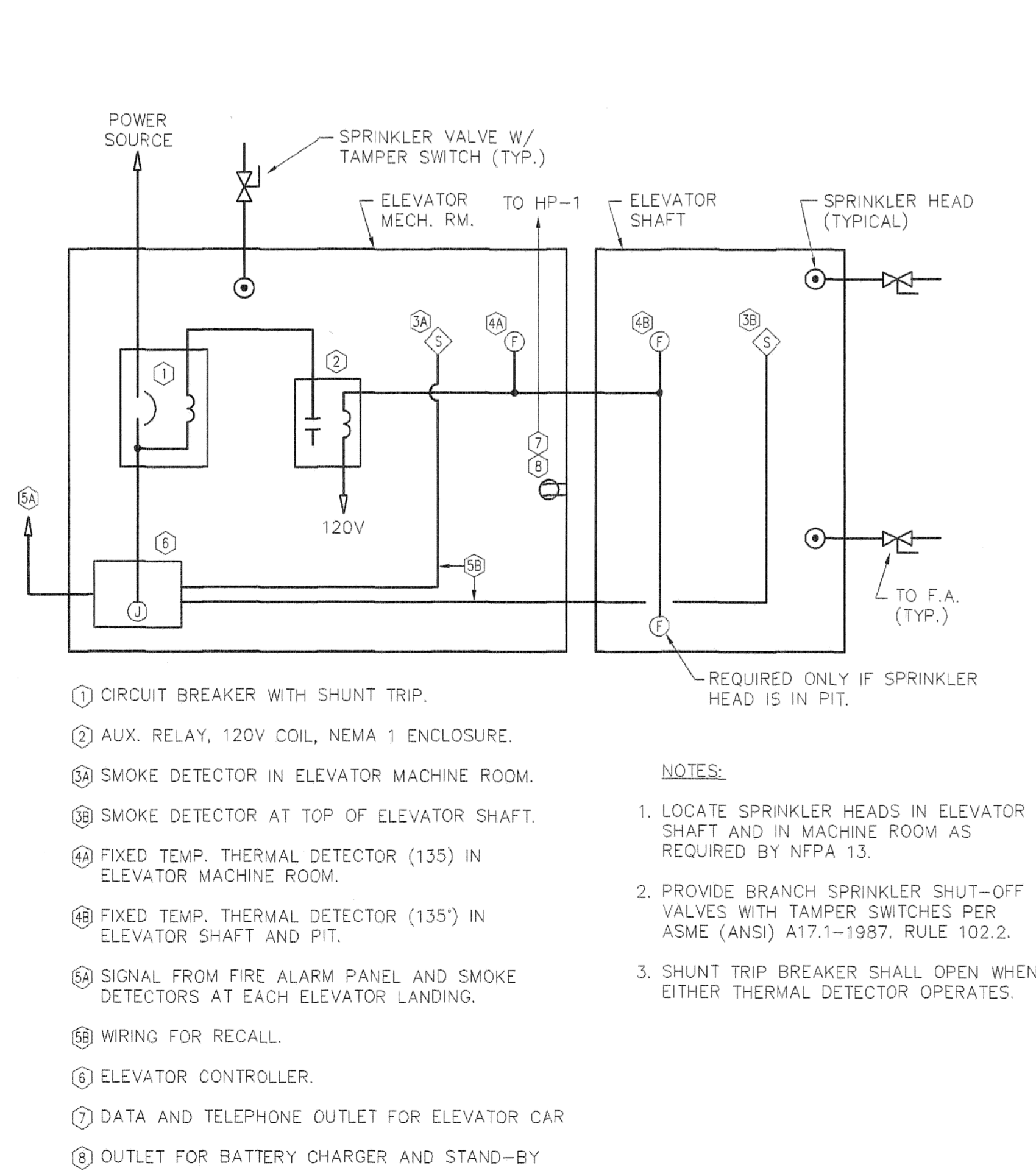


**FIRE ALARM NOTES**

1. MINIMUM SIZE CONDUIT SHALL BE 3/4" UNLESS NOTED OTHERWISE.
2. SYSTEM WIRING SHALL BE INSTALLED IN CONDUIT AND IN ACCORDANCE WITH EQUIPMENT SUPPLIER'S APPROVED SHOP DRAWINGS AND WIRING DIAGRAMS.
3. RISER DIAGRAM DOES NOT SHOW ENTIRE SYSTEM. REFER TO FLOOR PLANS FOR EXACT QUANTITIES AND LOCATIONS OF ALL SYSTEM DEVICES.
4. PROVIDE CIRCUITS AS REQUIRED FOR AUDIBLE/VISUAL SIGNALS. ALTERNATELY WIRE AUDIBLE/VISUAL SIGNALS.
5. PROVIDE LOCKING CIRCUIT BREAKER HANDLE ON POWER CIRCUIT. HANDLE LOCK SHALL ALLOW THE CIRCUIT BREAKER TO TRIP, BUT PREVENT SWITCHING OF THE CIRCUIT BREAKER TO THE "OFF" POSITION.
6. TO AUXILIARY CONTACTS FOR ELEVATOR SHUTDOWN ON ALARM.
7. ALL WIRING SHALL BE CONCEALED.

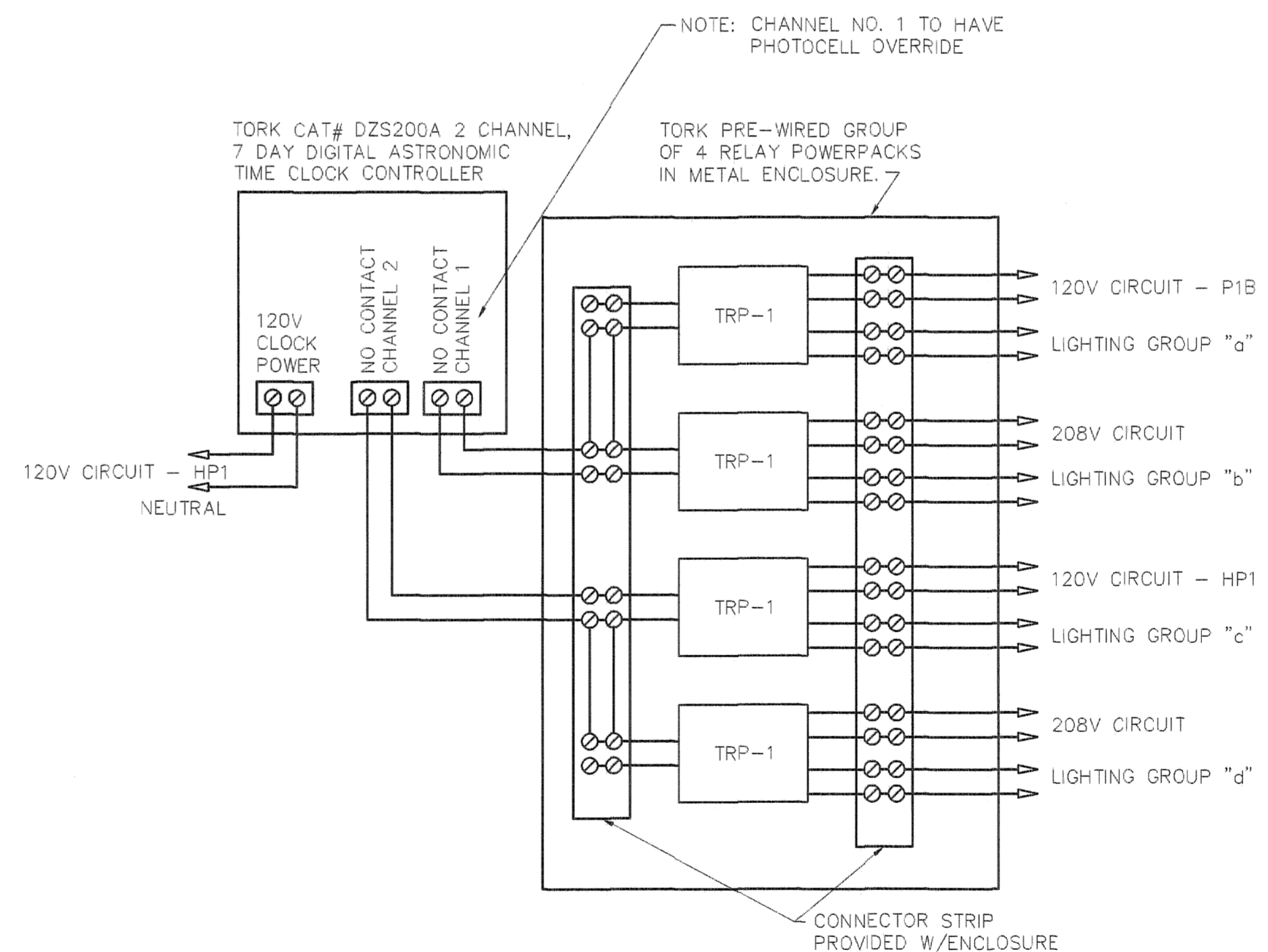
**FIRE ALARM RISER DIAGRAM**

SCALE: N.T.S.



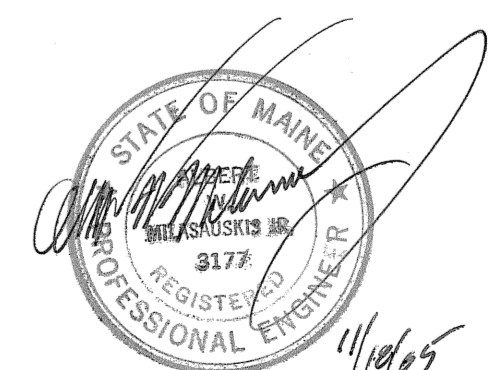
**ELEVATOR DEVICES AND WIRING DETAIL**

SCALE: N.T.S.



**EXTERIOR LIGHTING CONTROL DIAGRAM**

SCALE: NONE



**FOR BIDDING**  
11/18/05



Owner:  
**SHALOM HOUSE, INC.**  
P.O. BOX 560  
PORTLAND, MAINE 04112

Architect:  
**ARCHETYPE, P.A.**  
**ARCHITECTS**  
48 Union Wharf Portland, Maine 04101  
(207) 772-6022 Fax (207) 772-4056

Project:  
**VALLEY STREET APARTMENTS**  
GILMAN STREET  
PORTLAND, MAINE 04102

Scale: N.T.S.

Date: 11-18-05

Drawing:  
**ELECTRICAL DETAILS,  
NOTES, SCHEDULES,  
AND DIAGRAMS**

**E.5**