

Owner:
SHALOM HOUSE, INC.
P.O. BOX 560
PORTLAND, MAINE 04112

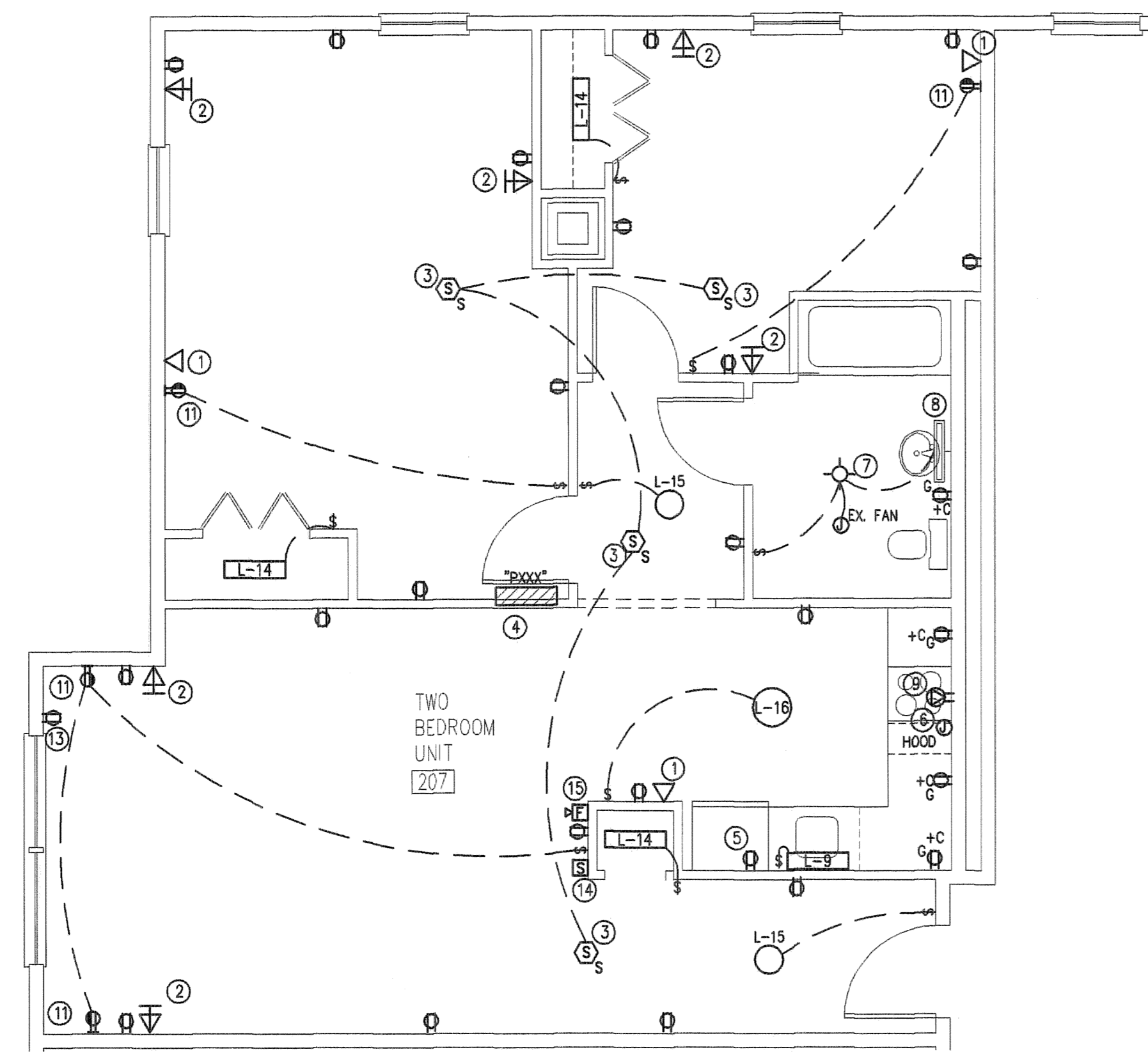
Architect:
ARCHETYPE, P.A.
ARCHITECTS
48 Union Wharf Portland, Maine 04101
(207) 772-6022 Fax (207) 772-4056

Project:
VALLEY STREET APARTMENTS
GILMAN STREET
PORTLAND, MAINE 04102

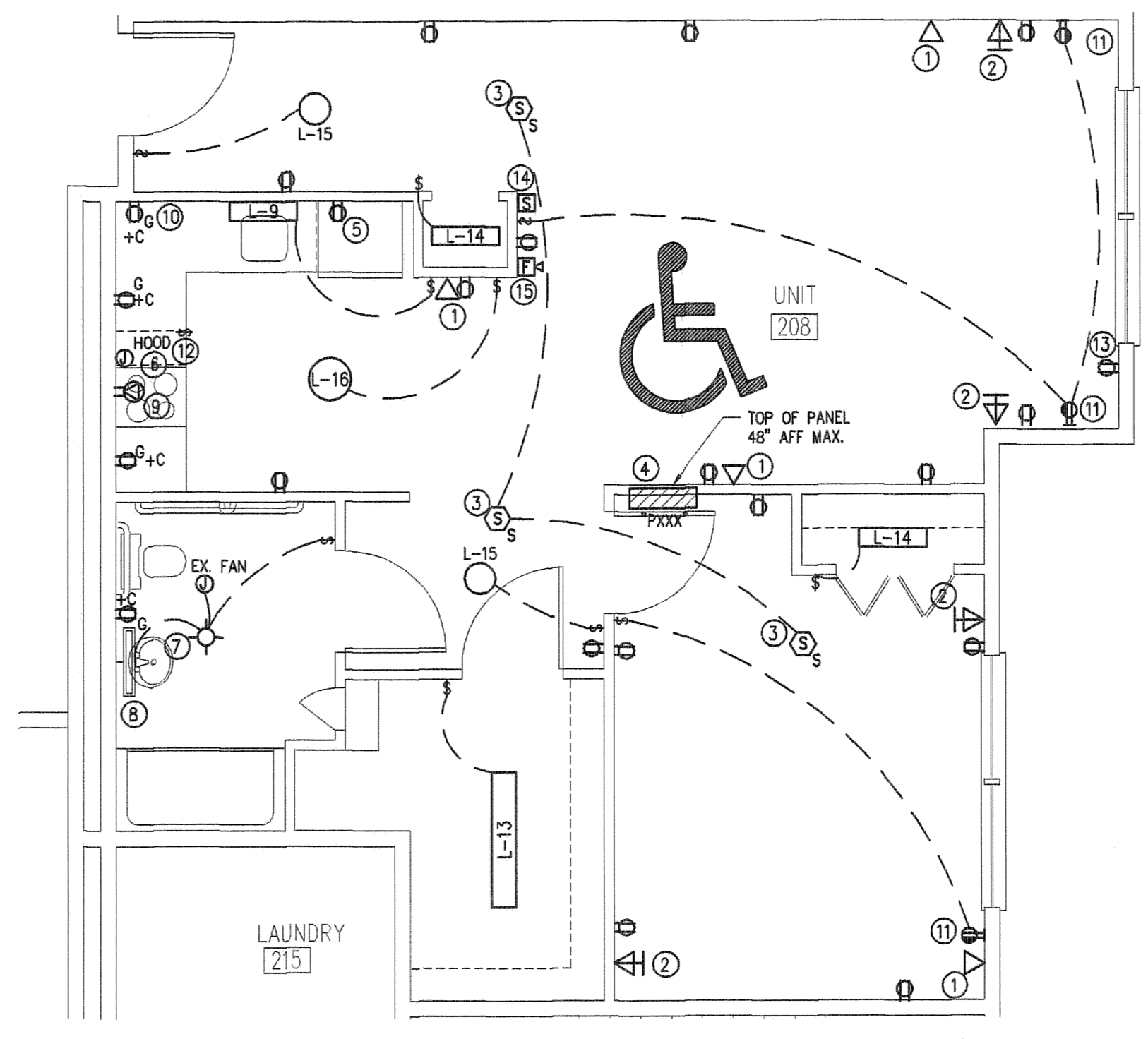
Date: **REVISED NOV. 9, 2004.**
Scale: **As Noted**

Drawing:
**2nd & 3rd FLOOR
ELECTRICAL
LIGHTING/POWER
PLANS**

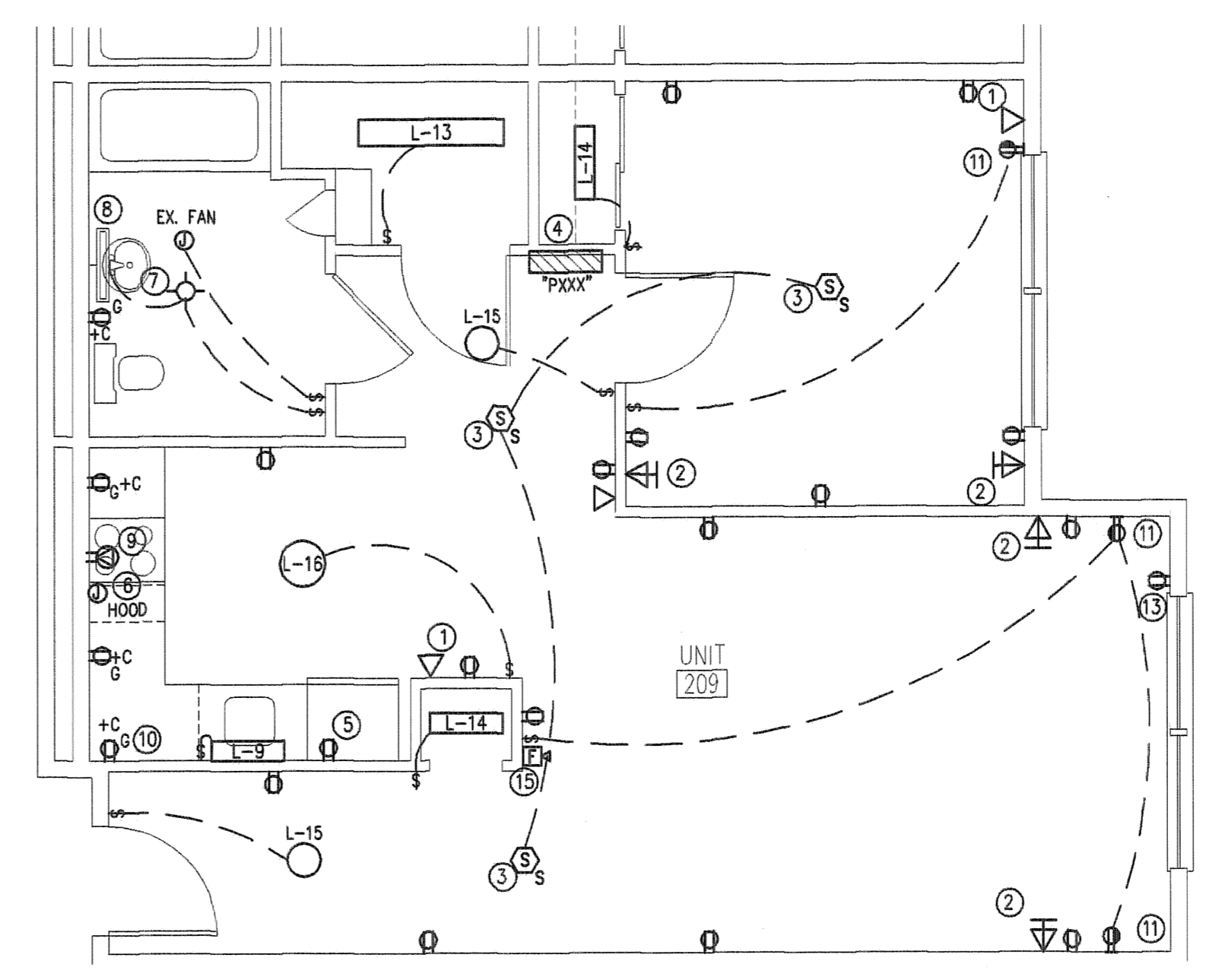
E.4



1 TYPICAL 2 BED UNIT - ELECTRICAL PLAN
SCALE: 1/4"=1'-0"

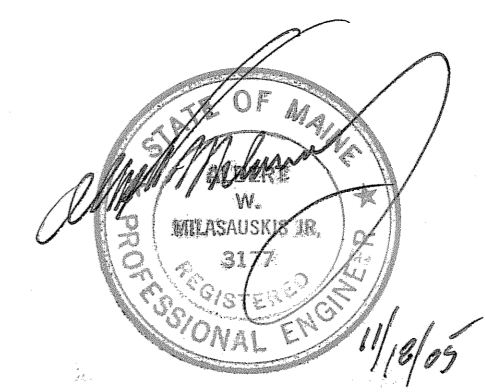


2 TYPICAL ADA UNIT - ELECTRICAL PLAN
SCALE: 1/4"=1'-0"



3 TYPICAL UNIT - ELECTRICAL PLAN
SCALE: 1/4"=1'-0"

- ELECTRICAL NOTES:**
- 1 NEW TELEPHONE TERMINATION 1-RJ45. PROVIDE CAT5E CABLES HOMERUNS FROM LAST BOX TO MAIN ELECTRIC ROOM COMMUNICATIONS PATCH.
 - 2 PROVIDE CABLE TELEVISION TERMINATION. PROVIDE RG6 COAXIAL. PROVIDE SINGLE HOMERUN TO MAIN ELECTRIC ROOM.
 - 3 PROVIDE 120V SINGLE STATION SMOKE DETECTOR WITH SOUNDER BASE. INTERCONNECT ALL DEVICES WITHIN THE UNIT. DEVICES IN A.D.A. UNITS 208, 308, 408, AS WELL AS 207, 307 AND 407 SHALL HAVE VISUAL STROBES.
 - 4 PROVIDE NEW 100AMP MAIN CIRCUIT BREAKER, 20 POLE 120V/240V, 1 PH, 3 WIRE LOAD CENTER 10,000AIC. PROVIDE (3#2G) 2" C FEEDER FROM MAIN ELECTRIC ROOM.
 - 5 PROVIDE DEDICATED 120V, 20 AMP CIRCUIT FOR REFRIGERATOR.
 - 6 PROVIDE DEDICATED 120V, 20 AMP CIRCUIT FOR HOOD AND MICROWAVE.
 - 7 CONNECT COMBINATION FAN/LIGHT FIXTURE. SEE MECH DWGS. FURNISHING UNIT.
 - 8 PROVIDE 120V CONNECTION IN SINGLE GANG JUNCTION BOX +72" ABOVE FINISHED FLOOR TO MEDICINE CABINET LIGHT FIXTURE (BY OTHERS). CONNECT TO BATHROOM LIGHTING CIRCUIT VIA WALL SWITCH.
 - 9 PROVIDE FLUSH MOUNT 240V GROUND 50A/2P RANGE RECEPTACLE.
 - 10 PROVIDE THREE DEDICATED CIRCUITS FOR KITCHEN COUNTER RECEPTACLES.
 - 11 PROVIDE LIGHTING CONTROLLED RECEPTACLE. THE BOTTOM OUTLET SHALL BE SWITCHED, THE TOP SHALL BE CONNECTED AHEAD OF SWITCHING FOR CONTINUOUS USE.
 - 12 ADA UNIT TYPES ONLY. PROVIDE WALL SWITCH MOUNTED ABOVE COUNTER FOR EXHAUST HOOD OPERATION.
 - 13 RECEPTACLE DEDICATED FOR A.C. UNIT
 - 14 STROBE UNIT TIED TO SINGLE STATION SMOKE DETECTORS.
 - 15 HORN UNIT TIED TO MAIN BLDG. FIRE ALARM SYSTEM.



FOR BIDDING
11/18/05