

LEGEND

POWER DISTRIBUTION

- DRY-TYPE TRANSFORMER
- LIQUID-TYPE TRANSFORMER
- PANELBOARD
- TEL/DATA AND CABLE TV PATCH PANEL
- HEAVY DUTY FUSED DISCONNECT SWITCH
- HEAVY DUTY NON-FUSED DISCONNECT SWITCH
- MOTOR (NUMERAL INDICATES HP)
- JUNCTION BOX
- WIRING UNDERGROUND OR UNDERSLAB
- HOMERUN - 2#12, #12G UNLESS GREATER THAN 75' THEN PROVIDE 2#10, #12G UNLESS NOTED OTHERWISE
- MULTI-PHASE HOMERUN OR MULTIPLE HOMERUNS UTILIZING THE SAME CONDUIT

RECEPTACLES

- MOUNT WITH CENTERLINE 18" AFF UNO
- MOUNT EXTERIOR WITH CENTERLINE 24" AFF UNO
- DUPLEX RECEPTACLE - 20A, 125V
- DUPLEX RECEPTACLE - 20A, 125V
- DUPLEX RECEPTACLE - 20A, 125V - MOUNT WITH CENTERLINE AT 8" ABOVE CABINET TOP.
- GFCI TYPE DUPLEX RECEPTACLE
- GFCI RECEPTACLE WITH WEATHERPROOF COVER
- DUPLEX RECEPTACLE - 20A, 125V - MOUNT WITH TOP OUTLET SWITCHED
- SINGLE PHASE 208V 30 AMP RECEPTACLE

COMMUNICATIONS SYSTEM

- MOUNT 18" AFF UNLESS NOTED OTHERWISE.
- TELEPHONE ONLY OUTLET: 1-RJ11
- TELE/DATA OUTLET: 1-RJ11 VOICE, 1-RJ45 DATA
- CABLE TELEVISION OUTLET: 1-TERMINATION, RG6 COAXIAL

FIRE ALARM SYSTEM

- FIRE ALARM CONTROL PANEL
- FIRE ALARM ANNUCIATOR
- VOICE EVACUATION CONTROL AND FIREMANS COMMUNICATION PANEL (EACH STAIR TOWER LANDING)
- FIRE ALARM SMOKE DETECTORS
- "1" - DENOTES SYSTEM SMOKE
- "2" - DENOTES ELEVATOR RECALL
- "3" - DENOTES SINGLE STATION DETECTORS 120 VOLTS WIRED TO SOUND ALL DEVICES WITHIN UNIT AND TROUBLE TO SYSTEM
- "4" - DENOTES SUPPLY AIR DUCT DETECTOR WITH REMOTE TEST AND STATICS STATION ON FLOOR BELOW
- HEAT DETECTOR - 135'
- MANUAL PULL STATION
- ALL STROBES ARE 75cd UNLESS NOTED OTHERWISE
- AUDIO/VISUAL INDICATING DEVICE
- MINI AUDIO/VISUAL INDICATING DEVICE
- AUDIO INDICATING DEVICE
- SPRINKLER TAMPER AND FLOW SWITCH OFF STANDPIPES FOR EACH FLOOR AND ZONE

LIGHTING FIXTURES:

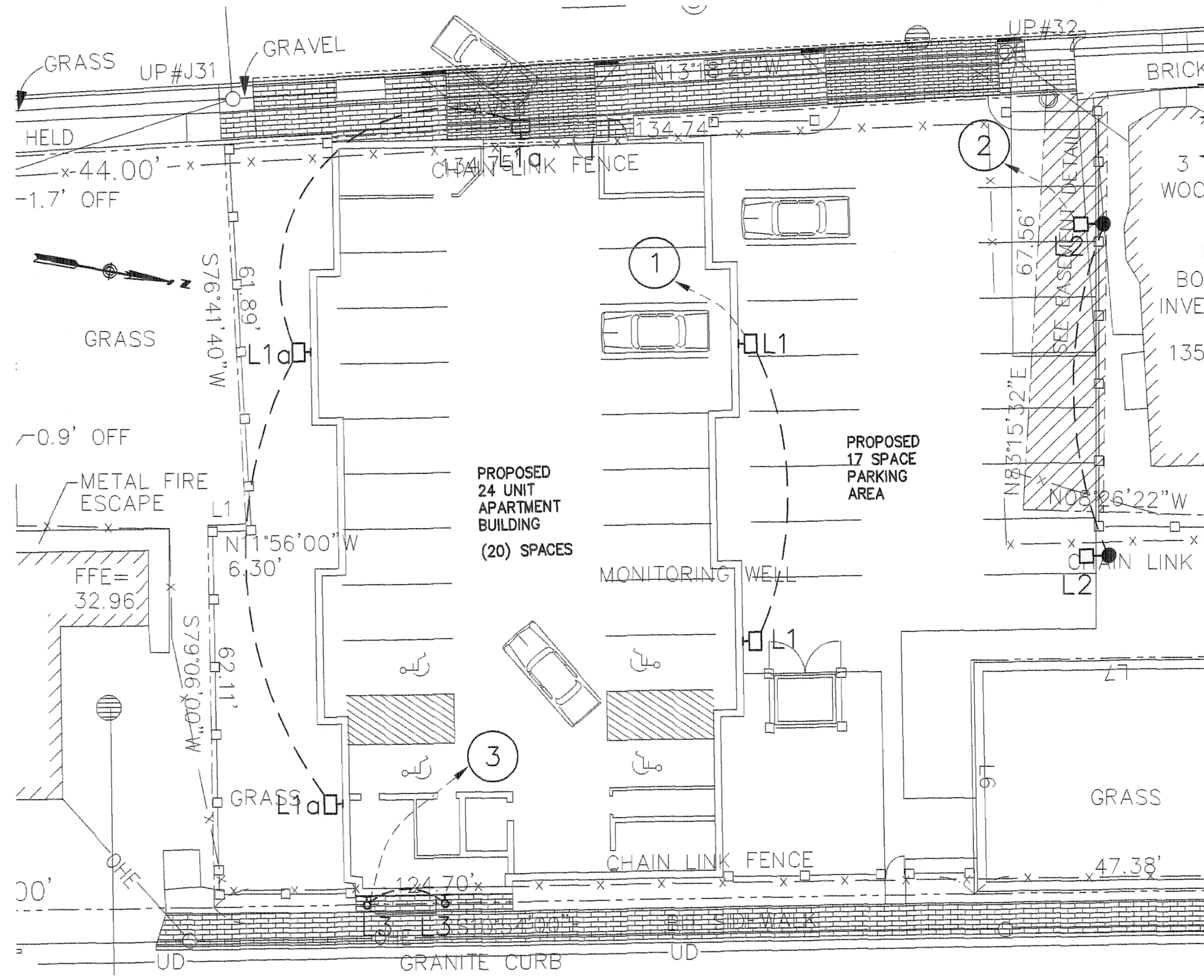
- NEW: FR1
- FIXTURE TYPE
- SWITCHING
- WALL MOUNTED
- CEILING MOUNTED
- PARKING LOT POLE MOUNT FIXTURE
- EMERGENCY BATTERY LIGHTING UNIT W/HEADS
- REMOTE EMERGENCY HEADS
- UNIVERSAL MOUNT EXIT SIGN - SINGLE FACE ARROWS AS INDICATED ON LIGHTING PLANS
- EDGE MOUNT EXIT SIGN - DOUBLE FACE ARROWS AS INDICATED ON LIGHTING PLANS
- COMBINATION LIGHT/MULTI-SPEED EXHAUST FAN PANASONIC #V-11VQL3

SWITCHES

- SINGLE POLE
- THREE WAY
- BOILER BURNER SWITCH
- KEY SWITCH W/ L.E.D. PILOT LIGHT
- RHEOSTAT FAN SPEED CONTROL SWITCH

LIGHTING FIXTURE & LAMPING SCHEDULE

TYPE	DESCRIPTION	SUBS.	VOLTAGE	VA	MOUNTING & INSTRUCTIONS	LAMPING
	SURE-LITES #CC4-WH-347 SELF-POWERED EMERGENCY LIGHTING WITH LEAD CALCIUM BATTERY, 9W HALOGEN HEADS.	OR EQUAL	120	-	WALL SURFACE 7'-6" AFF OR AS INDICATED ON DRAWINGS	INCLUDED 2-9WATT PAR36
	SURE-LITES #CCX-7-0-R-WH SELF-POWERED L.E.D. EXIT SIGNAGE SINGLE FACE, WITH RED LETTERING.	OR EQUAL	120	-	WALL/CEILING UNIVERSAL MOUNTING FACES AND ARROWS AS INDICATED ON DRAWINGS	INCLUDED L.E.D.
	SURE-LITES #CCX-7-2-R-WH SELF-POWERED L.E.D. EXIT SIGNAGE DUAL FACE, WITH RED LETTERING.	OR EQUAL	120	-	WALL/CEILING UNIVERSAL MOUNTING FACES AND ARROWS AS INDICATED ON DRAWINGS	INCLUDED L.E.D.
	SURE-LITES #6T-6-W SINGLE OR #6T-6-DW DOUBLE HEAD REMOTE SPOT, 6W HALOGEN LAMP	OR EQUAL	120	-	WALL SURFACE 7'-6" AFF OR AS INDICATED ON DRAWINGS	INCLUDED 6WATT PAR36
L1	GEOMATRIX GXMW70PMAL-B WALL PACK - MEDIUM SERIES	OR EQUAL	120	-	EXTERIOR WALL MOUNTED AT 12' ABOVE FINISHED GRADE - TILTED AT 22 DEGREES	70 WATT METAL HALIDE PULSE START
L10	GEOMATRIX GXMW70PMAL-B WALL PACK - MEDIUM SERIES	OR EQUAL	120	-	EXTERIOR WALL MOUNTED AT 12' ABOVE FINISHED GRADE - TILTED AT 0 DEGREES	70 WATT METAL HALIDE PULSE START
L2	WIDE-LITE - SPECTRA II - AL2P154HSQVSSDB WITH 101-4011-18-D1-DB POLE W/ INTERNAL CUT-OFF SHIELD - FORWARD THROW	OR EQUAL	208	-	POLE MOUNTED AT 18' ABOVE FINISHED PAVEMENT	150 WATT METAL HALIDE
L3	KIM SW1-50MH-120-BL-P ELECTRONIC BALLAST	OR EQUAL	120	-	EXTERIOR WALL MOUNT AT 8'-6" AFF TO TOP OF FIXTURE	50WVH ED17 MED. BASE
L4	PGL4-100 MH208-05 KIM LIGHTING	OR EQUAL	208	-	SURFACE MOUNT GARAGE PARKING - BOTTOM OF STEEL BEAM	100 WATT METAL HALIDE WITH T-4 QUARTZ 50 WATT STAND-BY
L5	HALO #H2411-WG11 JELLY JAR WITH WIREGUARD	OR EQUAL	120	-	WALL MOUNTED	1-CF24W 4-PIN 3000K
L6	NOT USED					
L7	LIGHTOLIER 48020ALU740913 SOLI CFL WALL SCONCE WITH ELECTRONIC BALLASTS	OR EQUAL	120	-	WALL MOUNTED	1-32W TTT CFL FL
L8	LIGHTOLIER 5543WH239U WHITE SPILL RING WITH ELECTRONIC BALLAST	OR EQUAL	120	-	CEILING MOUNTED	2-36W TT 4 PIN
L9	ALKCO #0117-RSW, 2' UNDERCABINET LIGHT WITH INTEGRAL ROCKER SWITCH WITH ELECTRONIC BALLAST	OR EQUAL	120	-	SURFACE UNDER CABINET	1-F017 T8/3000K
L10	NOT USED					
L11	NOT USED					
L12	LIGHTOLIER PRISMALYTE SURFACE - 2x4 PNB25RAV443212004 - 3 LAMP STATIC LENS AND ELECTRONIC BALLAST	OR EQUAL	120	-	CEILING MOUNTED	3 - T8 LAMPS
L13	LIGHTOLIER JETSTAR - JS4A232 - 2 LAMP FOUR FOOT UNIT - STATIC LENS	OR EQUAL	120	-	CEILING MOUNTED	2 - T8 LAMPS
L14	LIGHTOLIER JETSTAR - JS2C117 - 1 LAMP TWO FOOT UNIT - WRAP AROUND LENS	OR EQUAL	120	-	CEILING MOUNTED	1 - T8 LAMPS
L15	LUMIRONDE G73WH213N1 WHITE 12" POLYCARBONATE HOUSING	OR EQUAL	120	-	CEILING MOUNTED	2 - 13W TWIN TUBE
L16	DISCUS G700MS38U - 120 ELECTRONIC BALLAST - MATTE SILVER	OR EQUAL	120	-	CEILING MOUNTED	1 - 38W GE-20

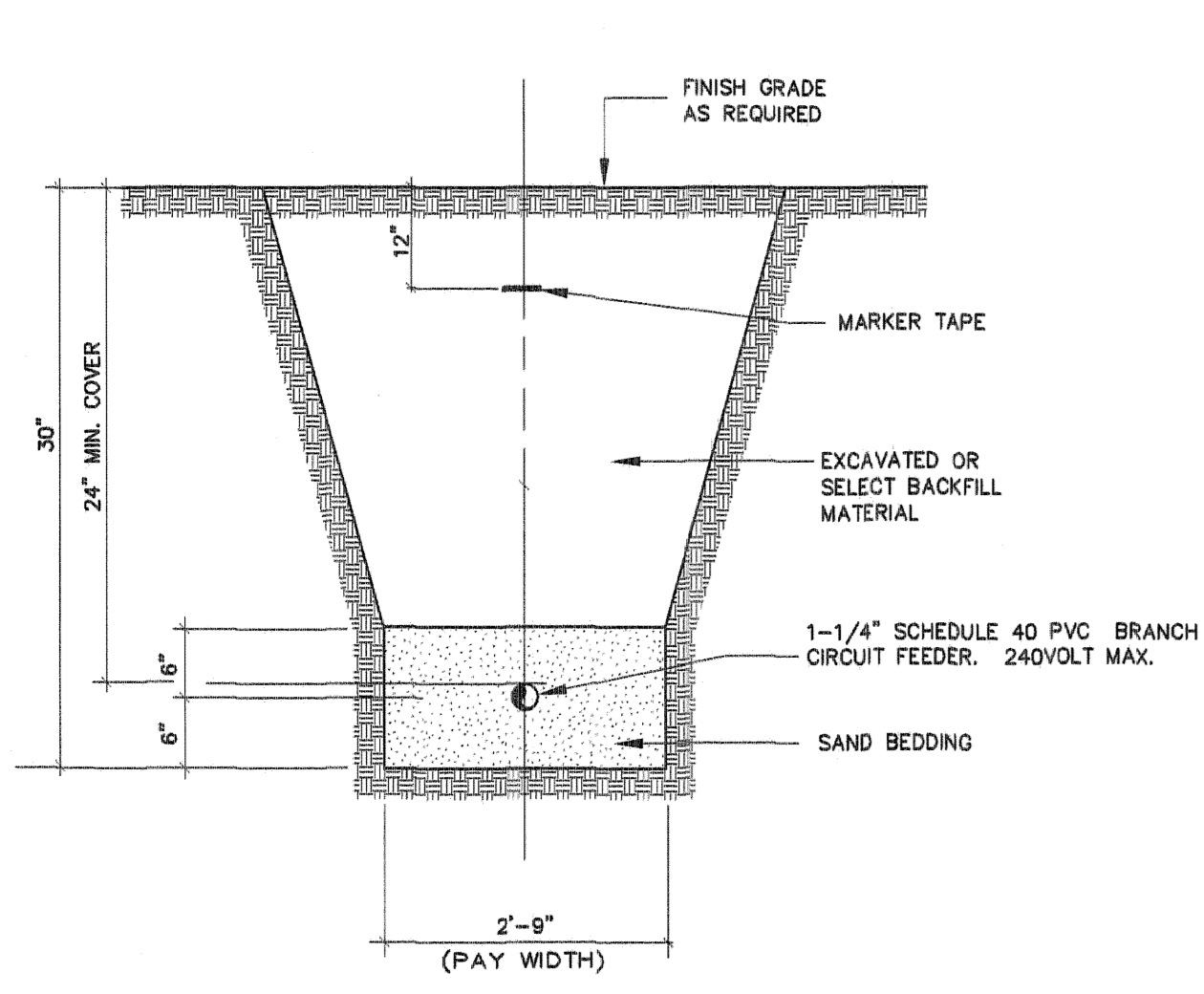


KEY NOTES

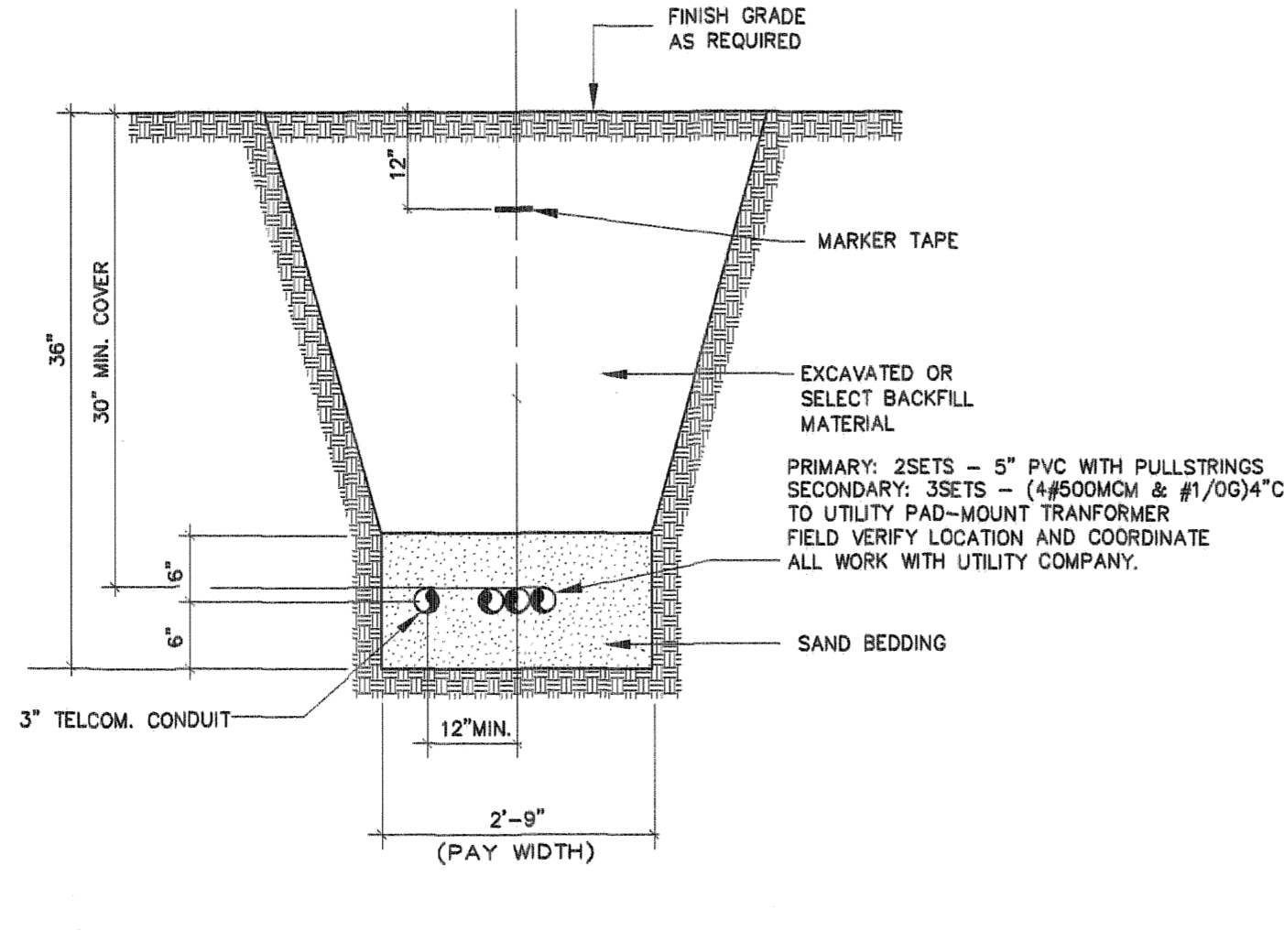
- ① TO EXTERIOR LIGHTING PANEL (LIGHTING GROUP a)
- ② UNDERGROUND TO EXTERIOR LIGHTING PANEL (LIGHTING GROUP b)
- ③ TO EXTERIOR LIGHTING PANEL (LIGHTING GROUP c)

ELECTRICAL POWER AND SITE LIGHTING PLAN

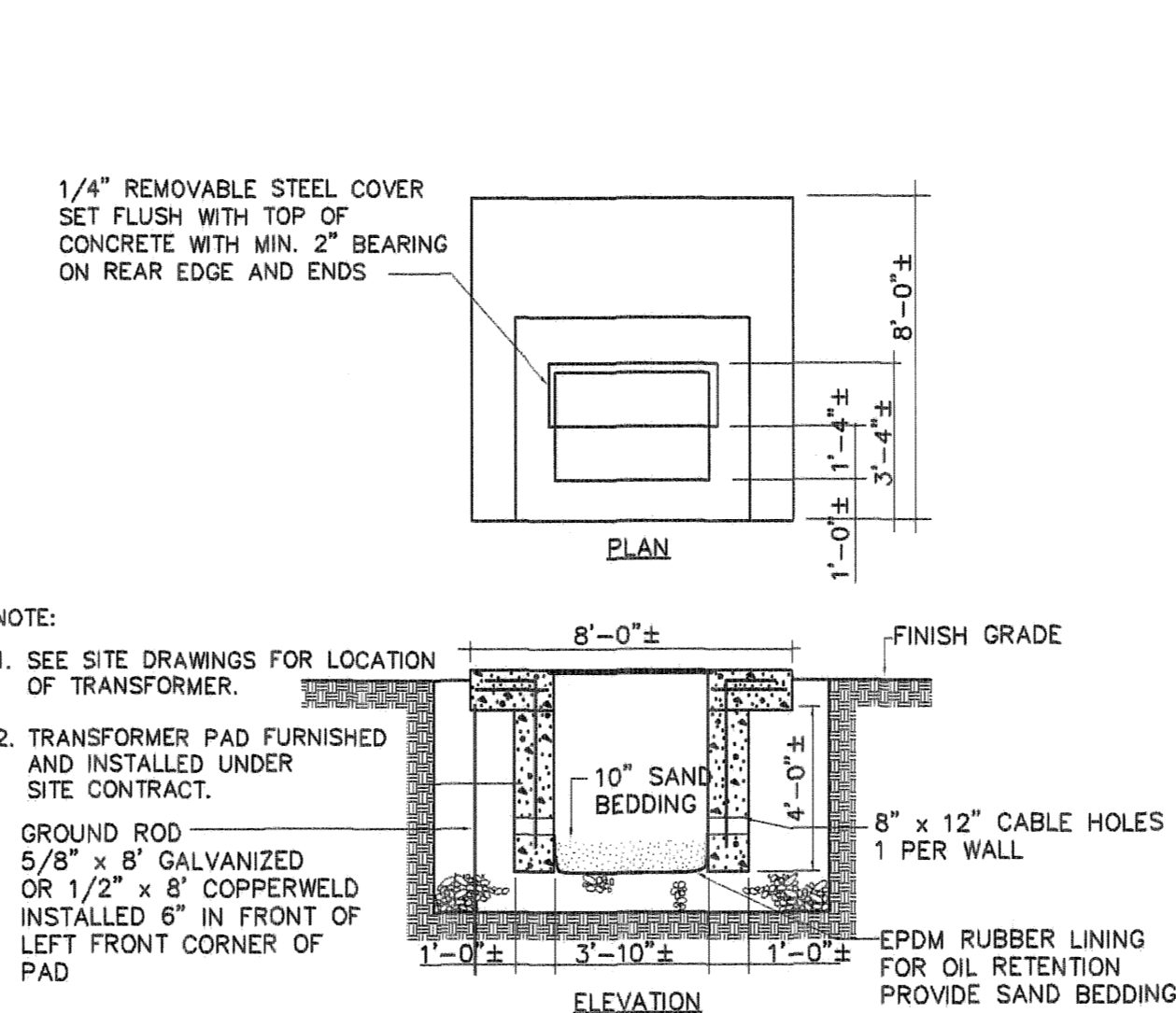
SCALE: 1/16"=1'-0"



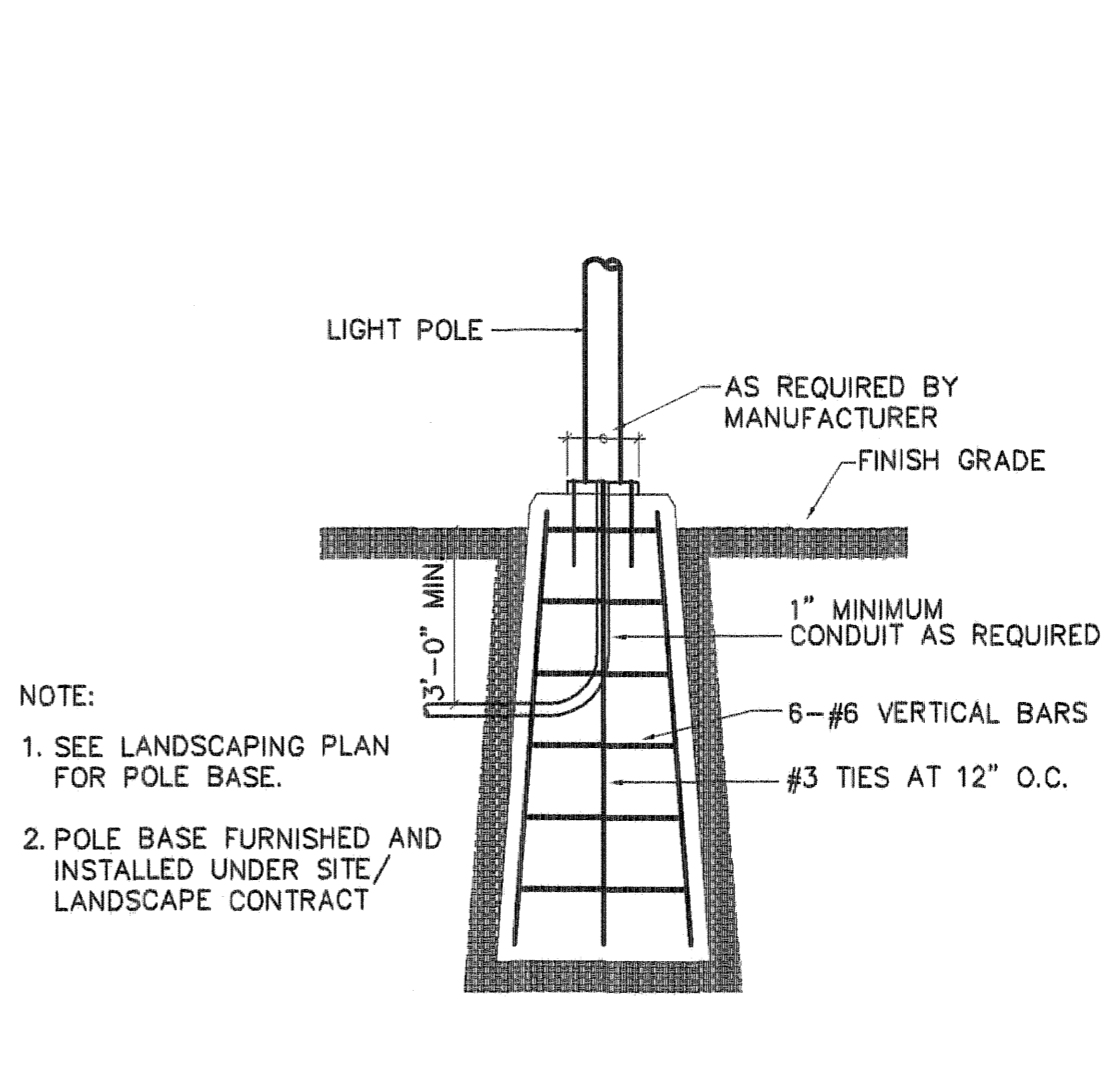
BRANCH CIRCUIT TRENCH DETAIL
SCALE: N.T.S.



SERVICE FEEDER TRENCH DETAIL
SCALE: N.T.S.



TRANSFORMER PAD DETAIL
SCALE: N.T.S.



TYPICAL LIGHT POLE BASE DETAIL
SCALE: N.T.S.

FOR BIDDING
11/18/05

