

Owner: 315 VALLEY STREET, LP
P.O. BOX 560
PORTLAND, MAINE 04112

Architect: **ARCHETYPE, P.A.**
ARCHITECTS
48 Union Wharf Portland, Maine 04101
(207) 772-6022 Fax (207) 772-4056

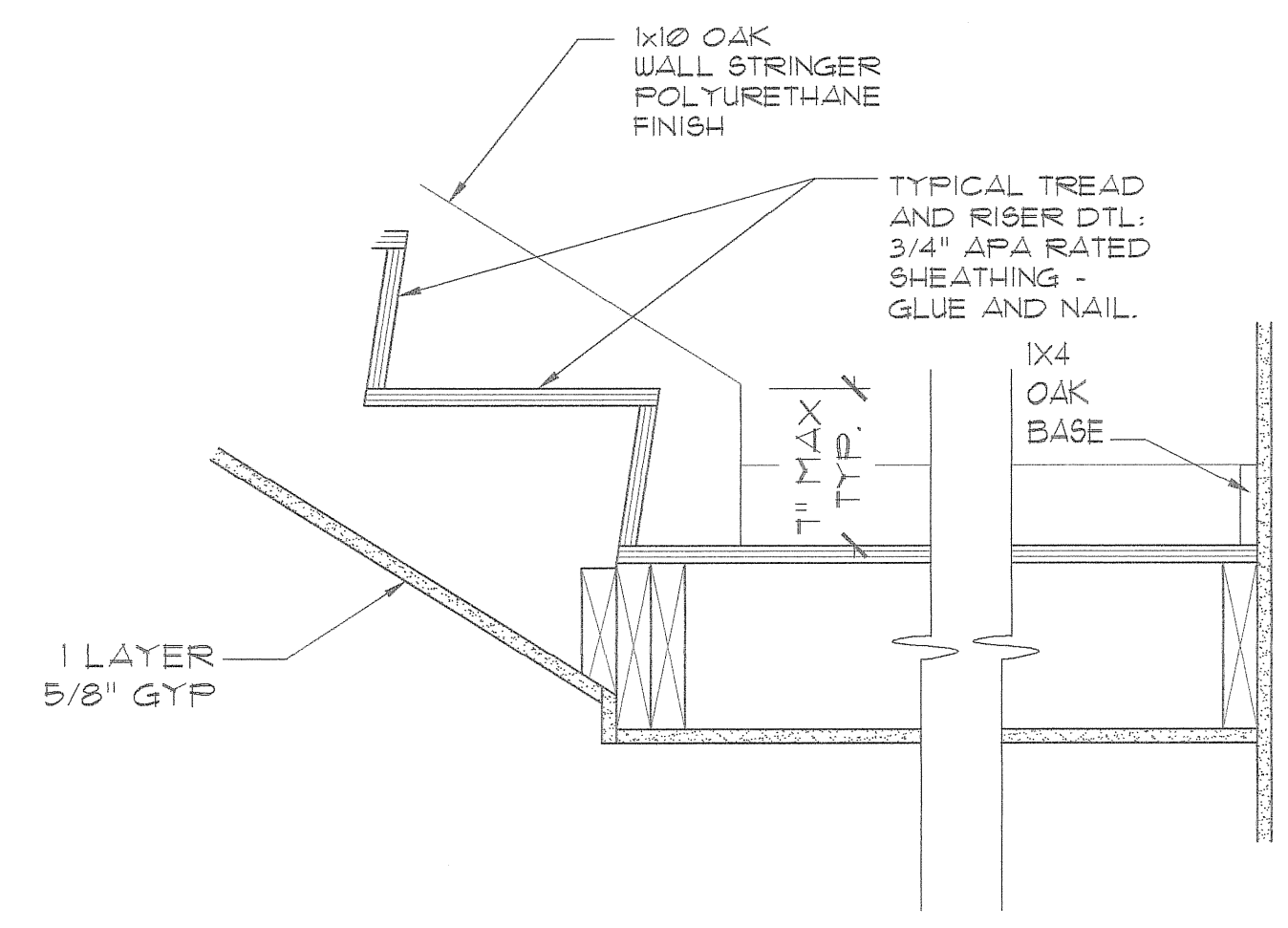
Project: VALLEY STREET APARTMENTS
GILMAN STREET
PORTLAND, MAINE 04102

Date: NOV 21 2005
Scale: As Noted

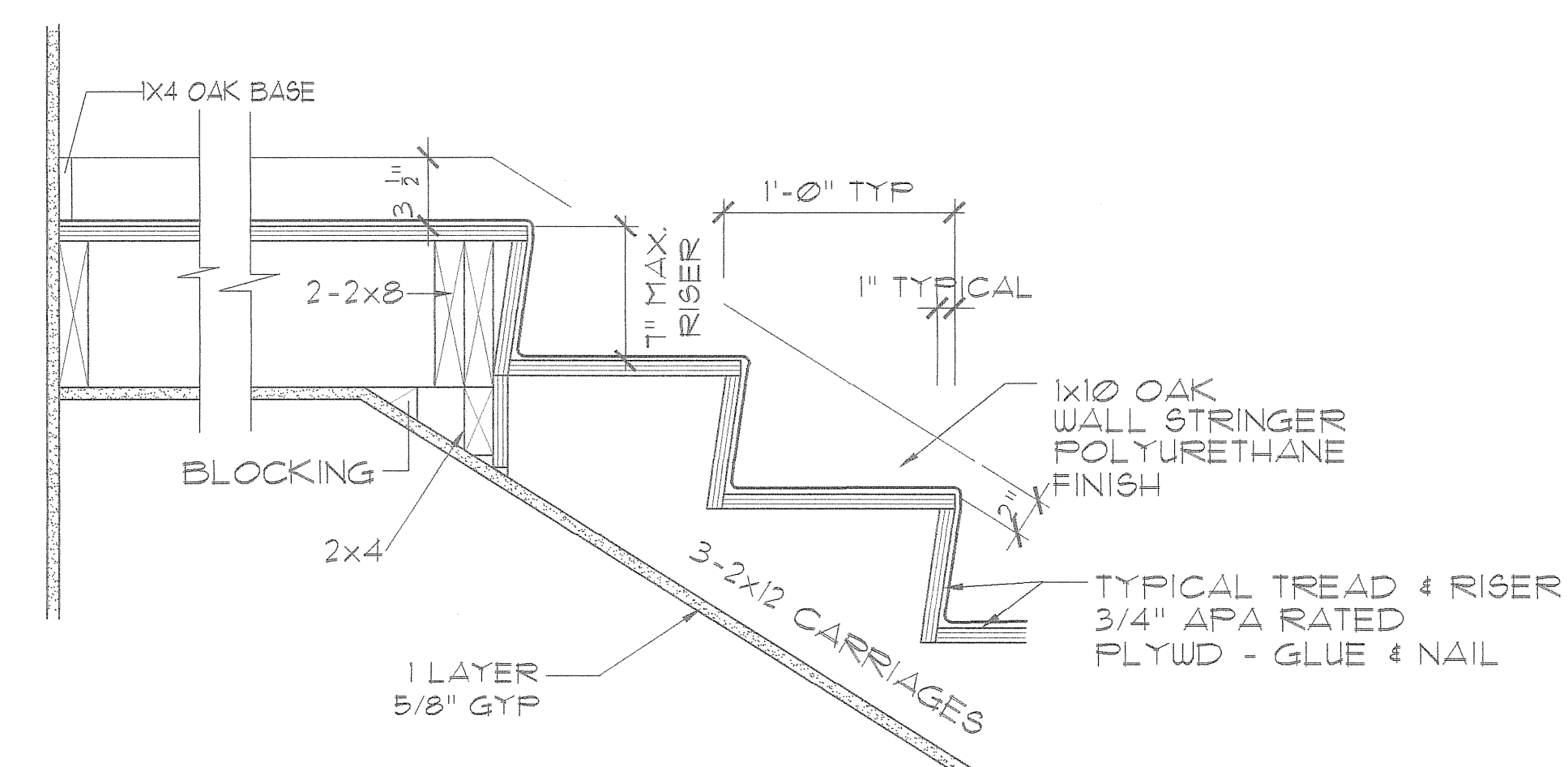
Drawing: **STAIR DETAILS**

A.12

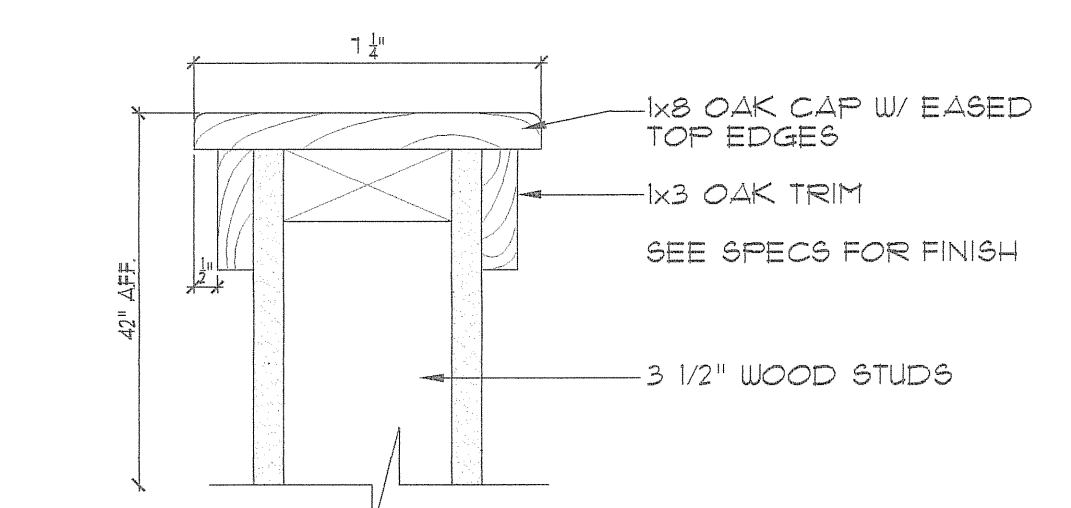
NOTE: DIMENSIONS IN STAIRS MEASURED TO FACE OF STUD OR CONCRETE.



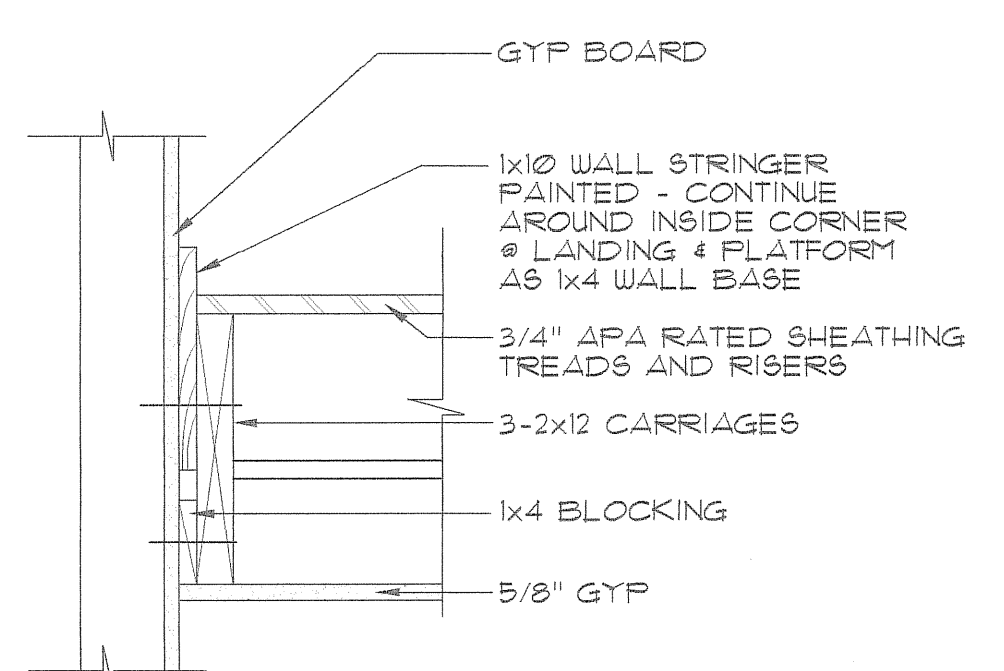
B STAIR DETAIL
SCALE: 1-1/2"=1'-0"



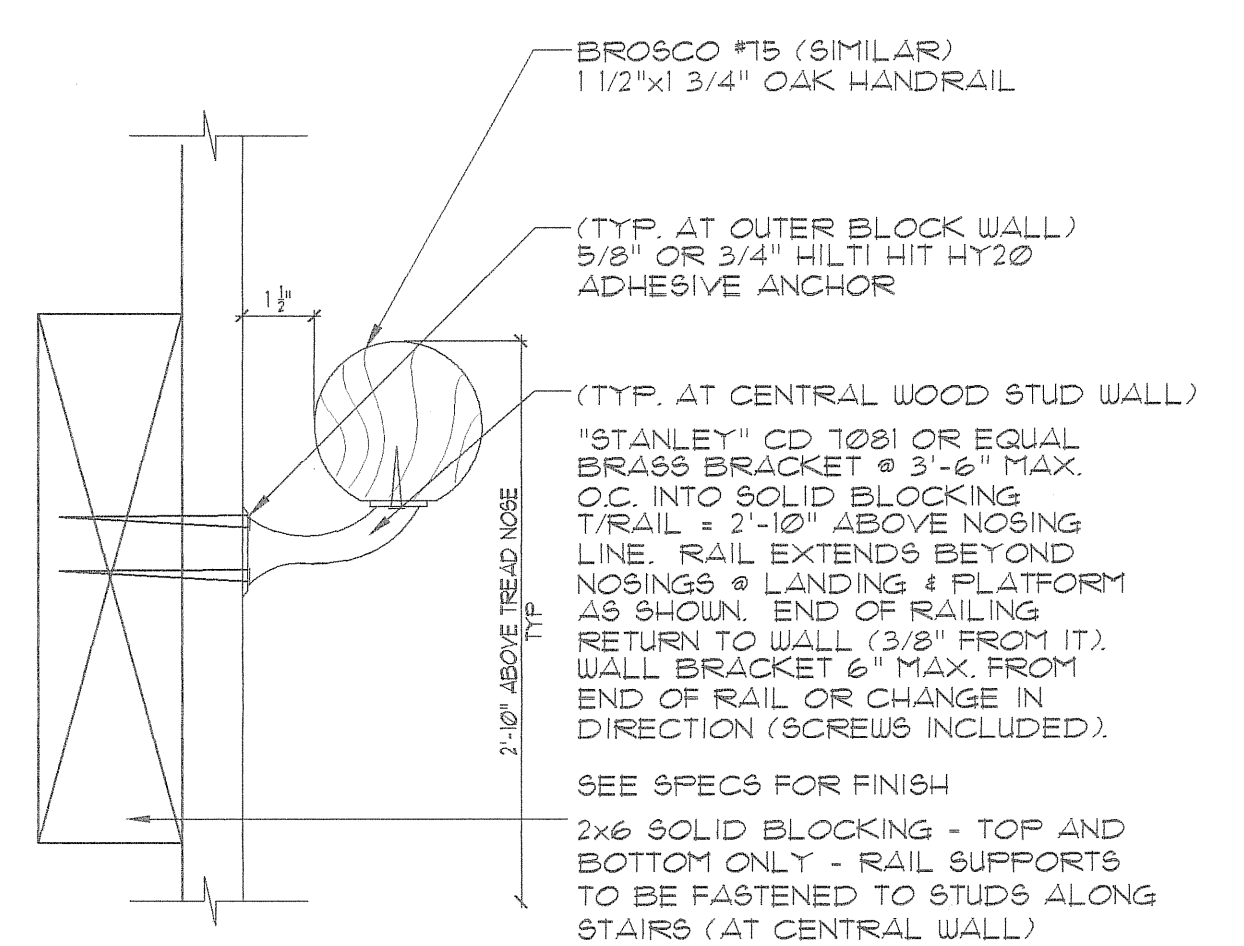
A STAIR DETAIL
SCALE: 1-1/2"=1'-0"



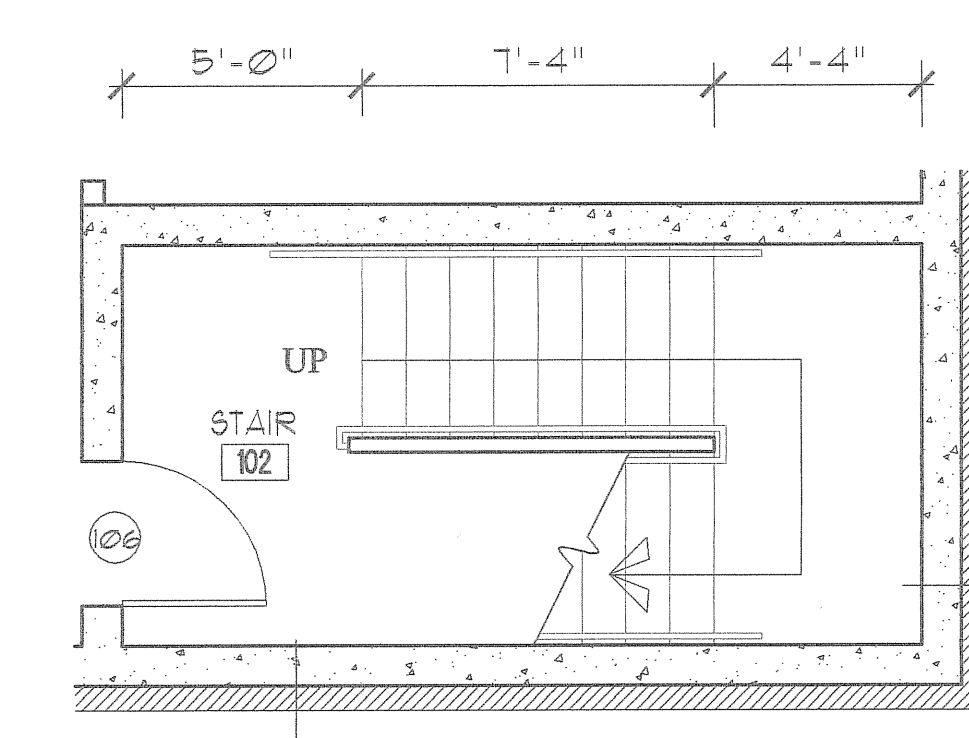
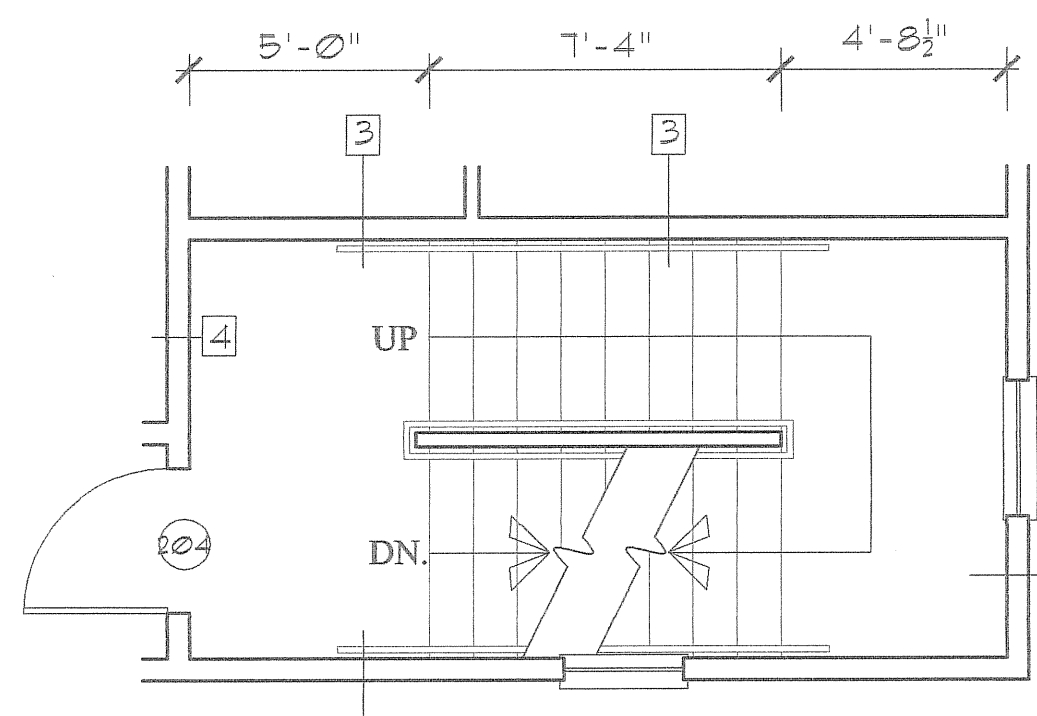
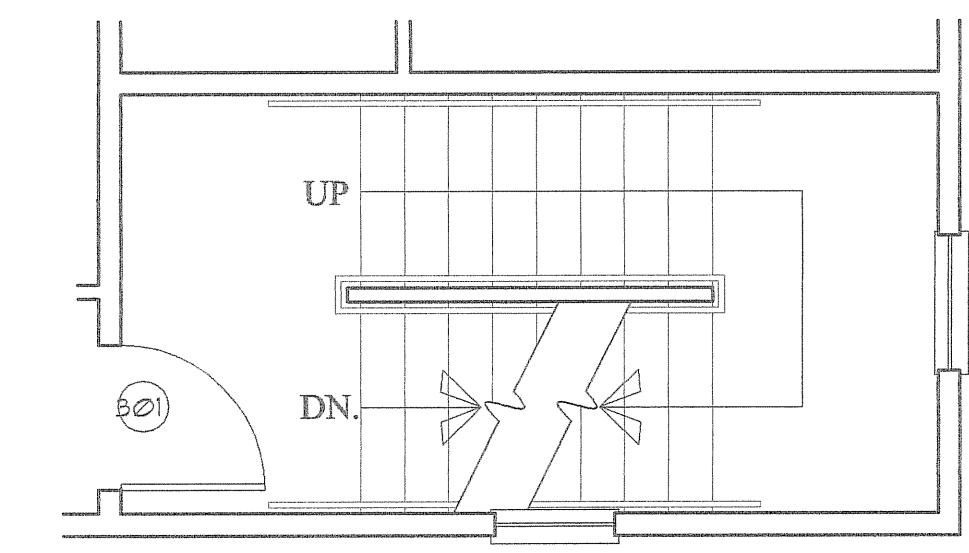
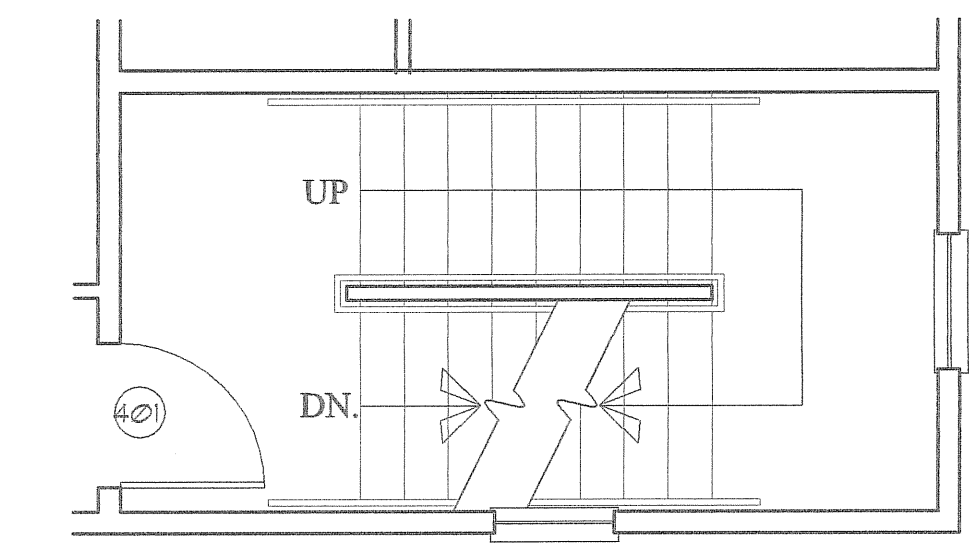
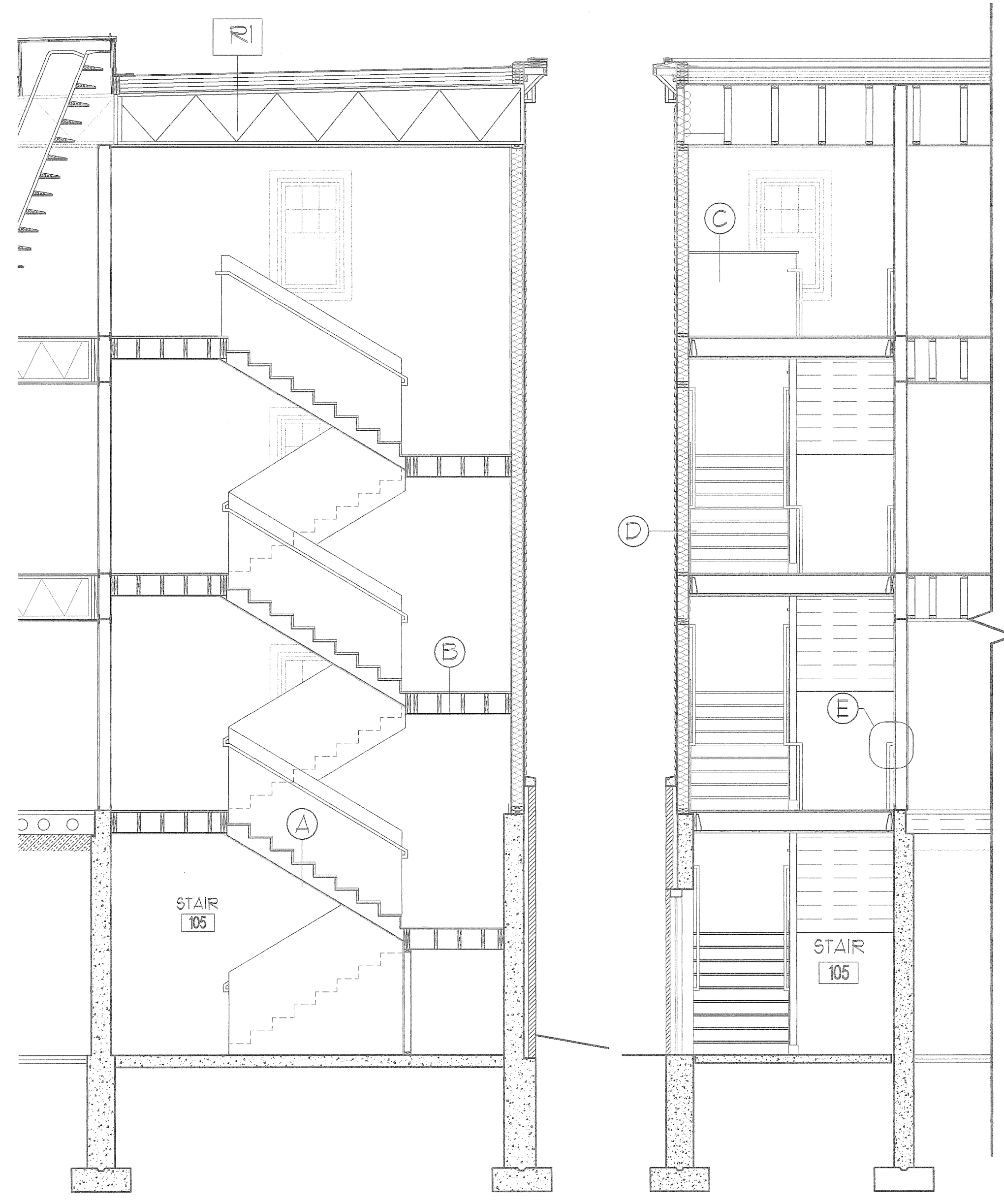
C WALL CAP DETAIL
SCALE: 3"=1'-0"



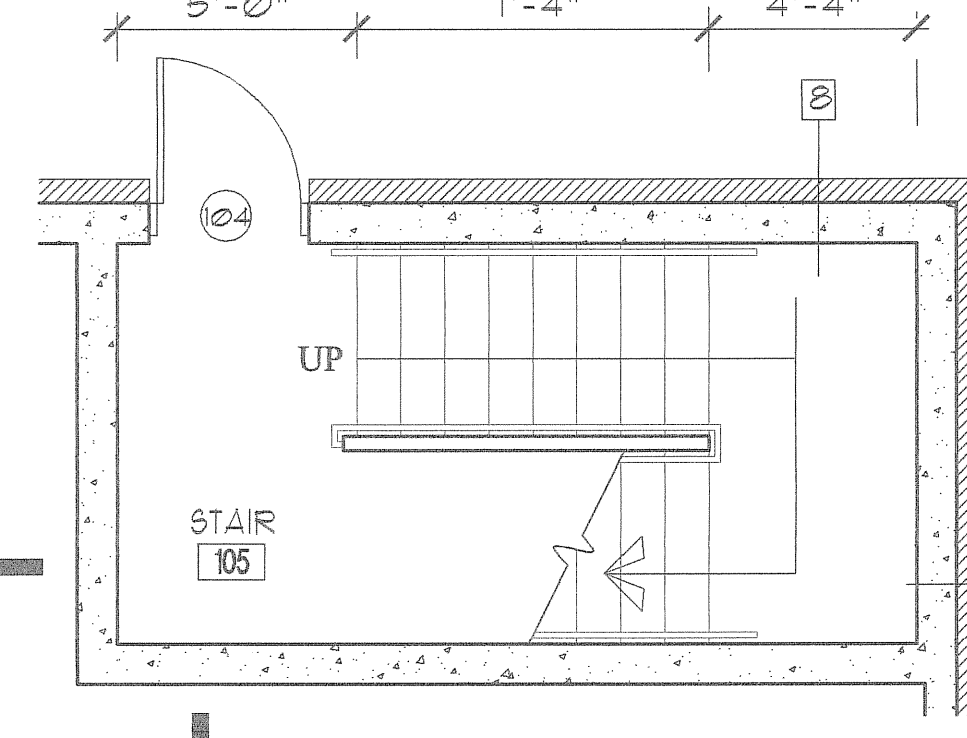
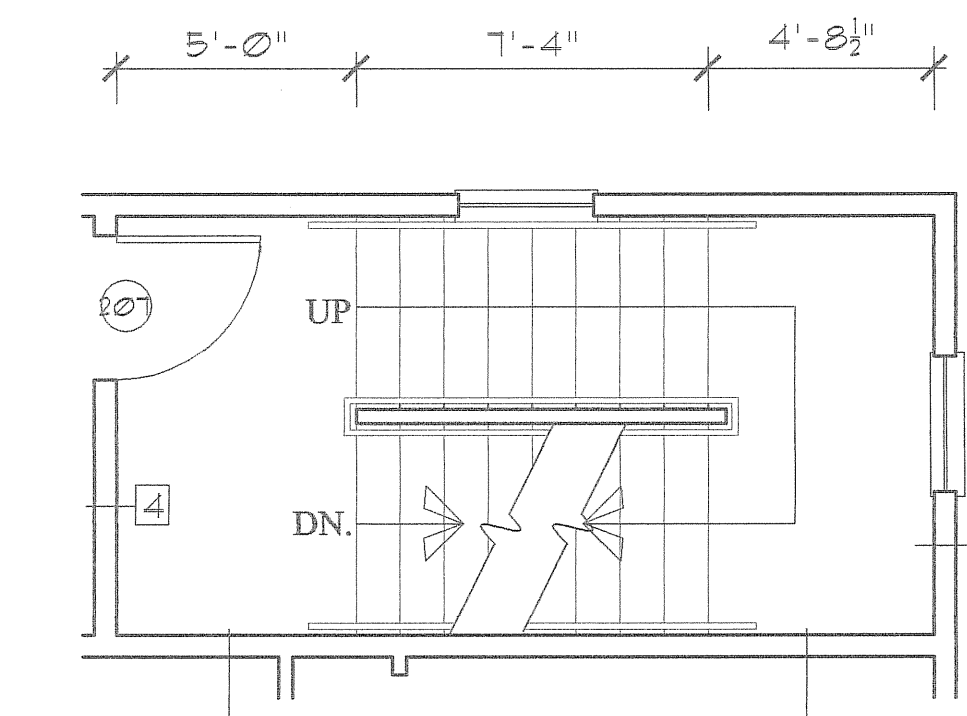
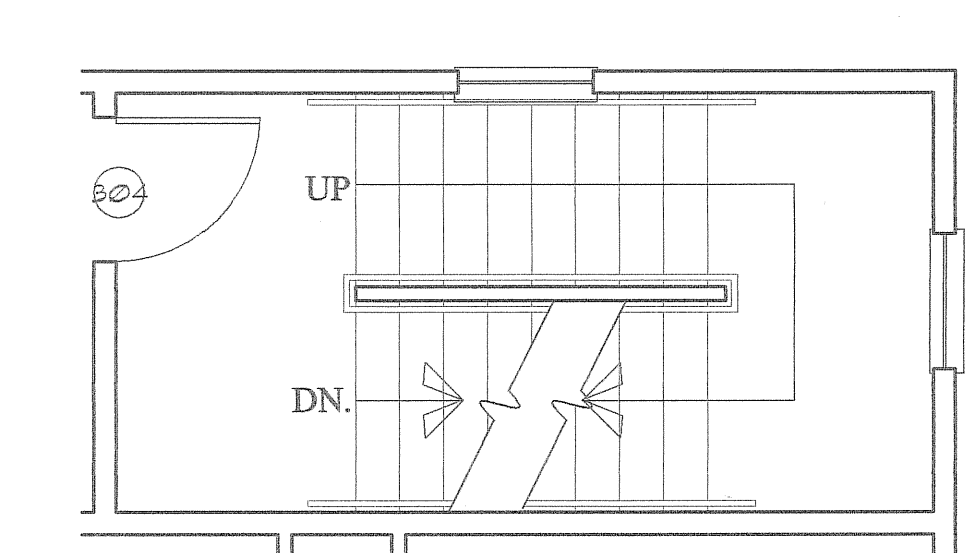
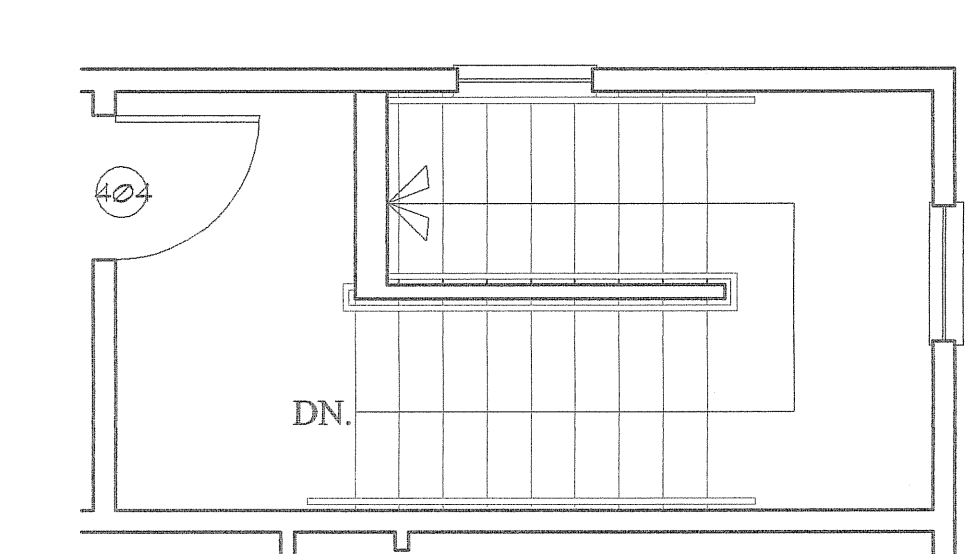
D STAIR DETAIL
SCALE: 1-1/2"=1'-0"



E STAIR HANDRAIL DETAIL
SCALE: 3"=1'-0"



1 STAIR 102 - PLANS
SCALE: 1/4" = 1'-0"



1 STAIR 105 - PLANS
SCALE: 1/4" = 1'-0"

NOTE: STAIR 102 IS SIMILAR TO STAIR 105.