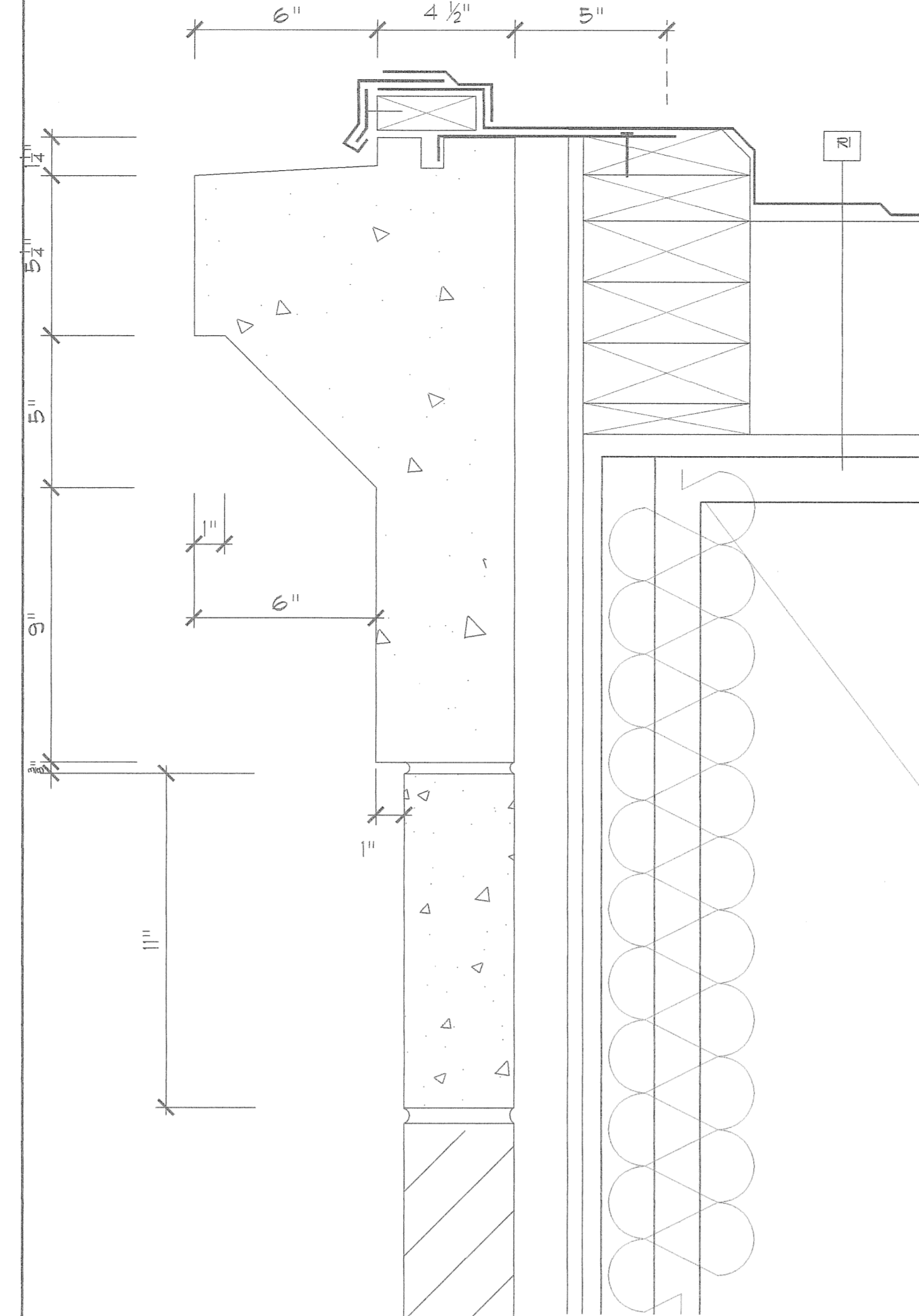
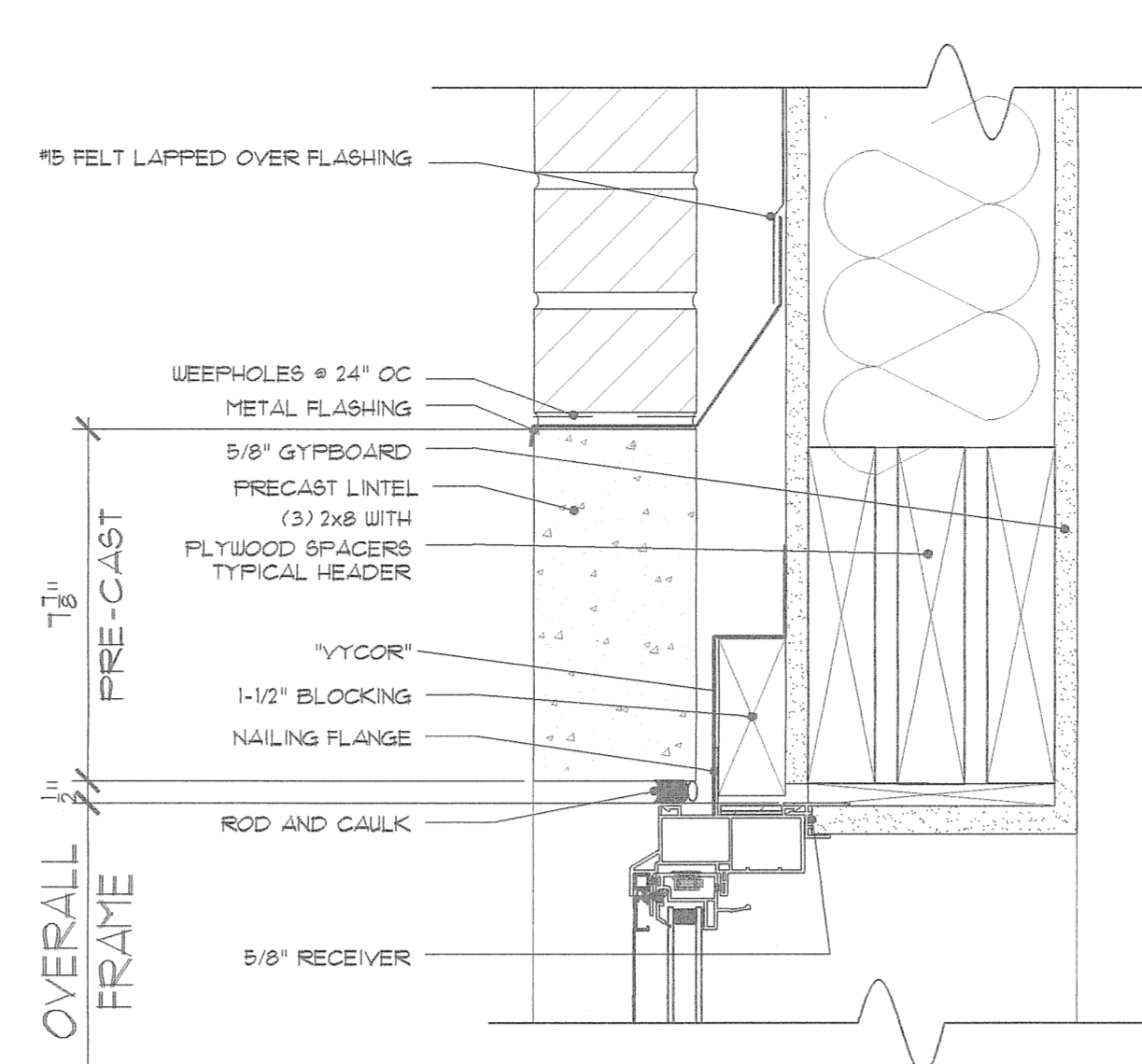


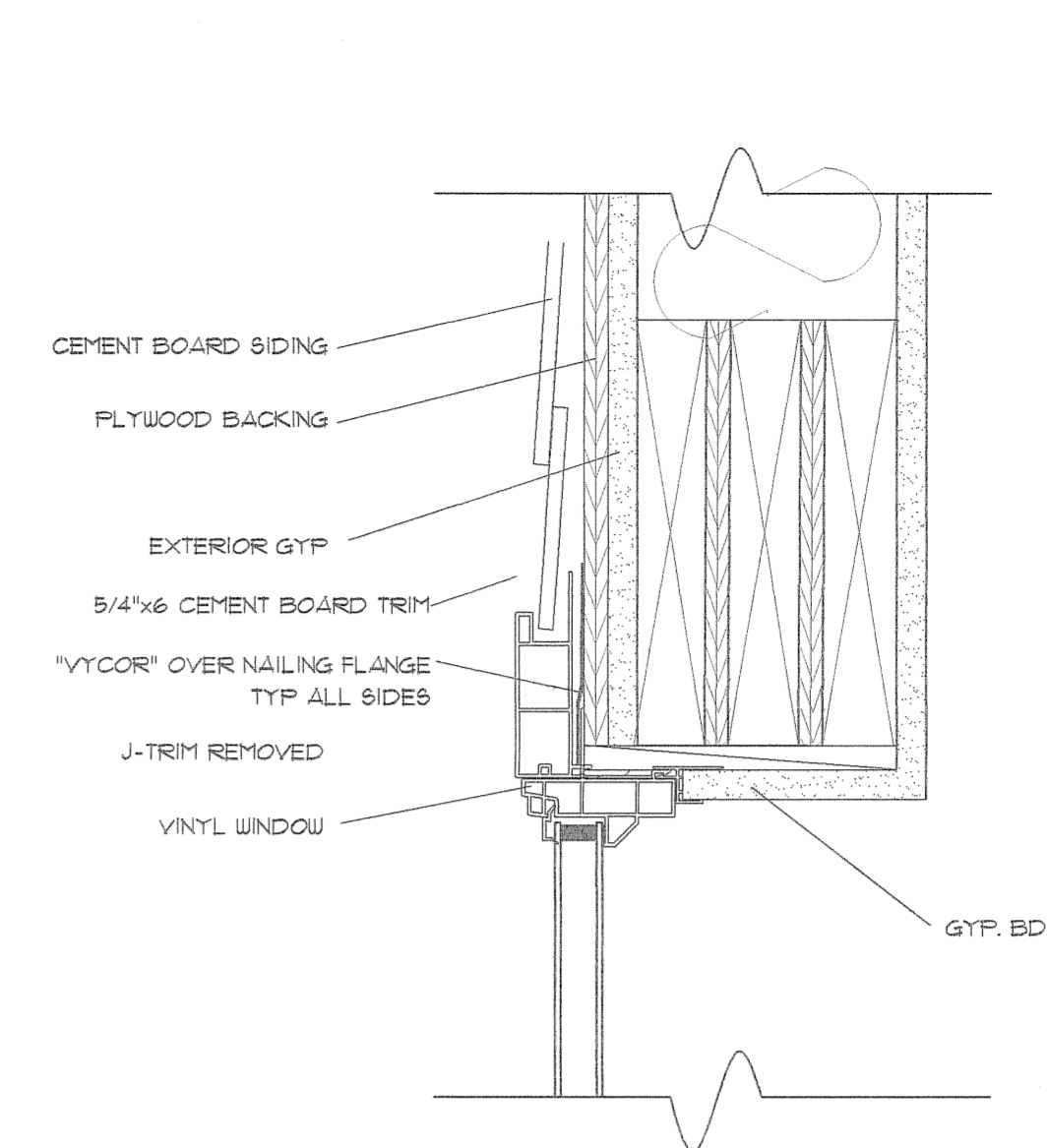
1 ROOF EDGE - BRICK SIDING (DETAIL #2 NOT USED)
SCALE: 3"=1'-0"



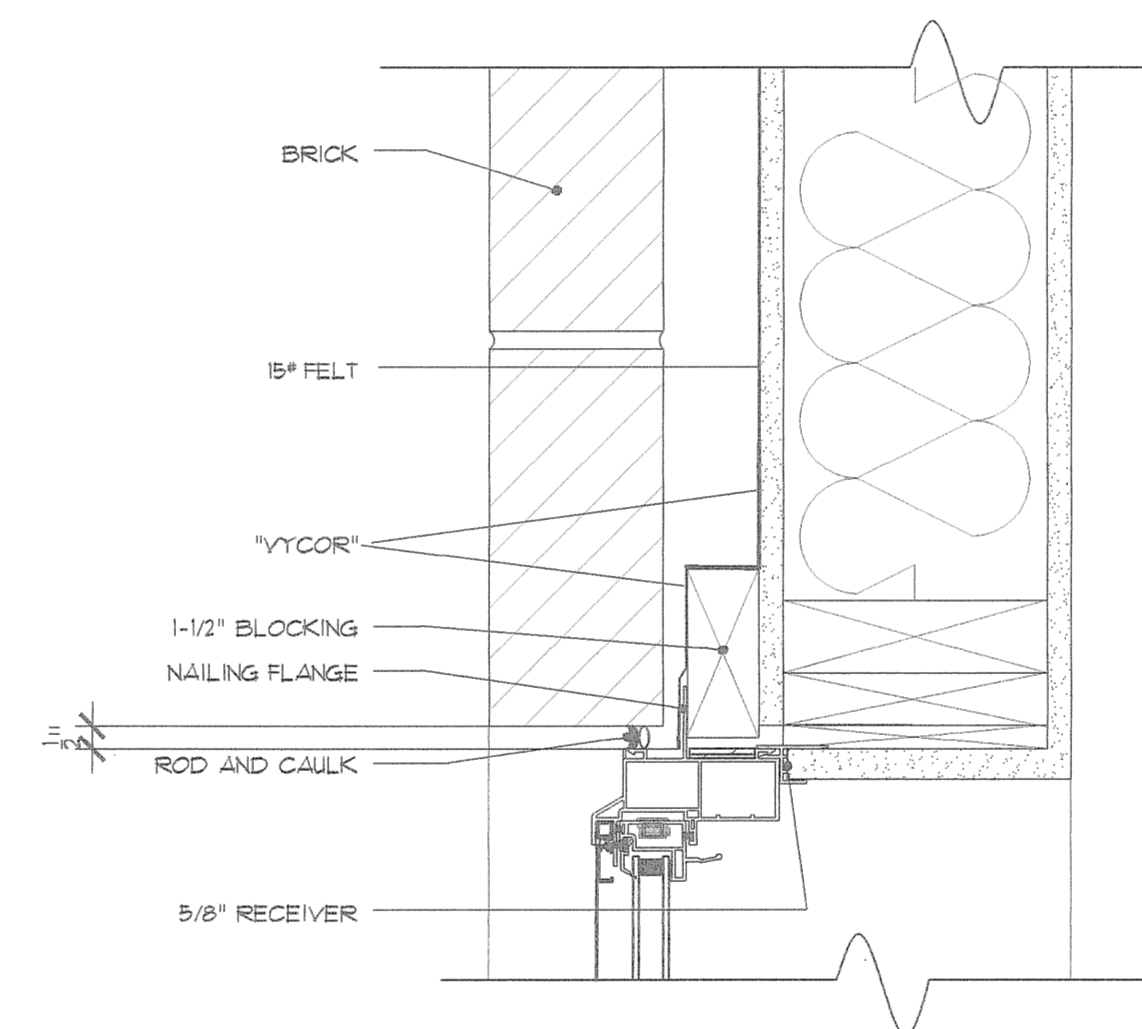
2 ROOF EDGE - BRICK SIDING
SCALE: 3"=1'-0"



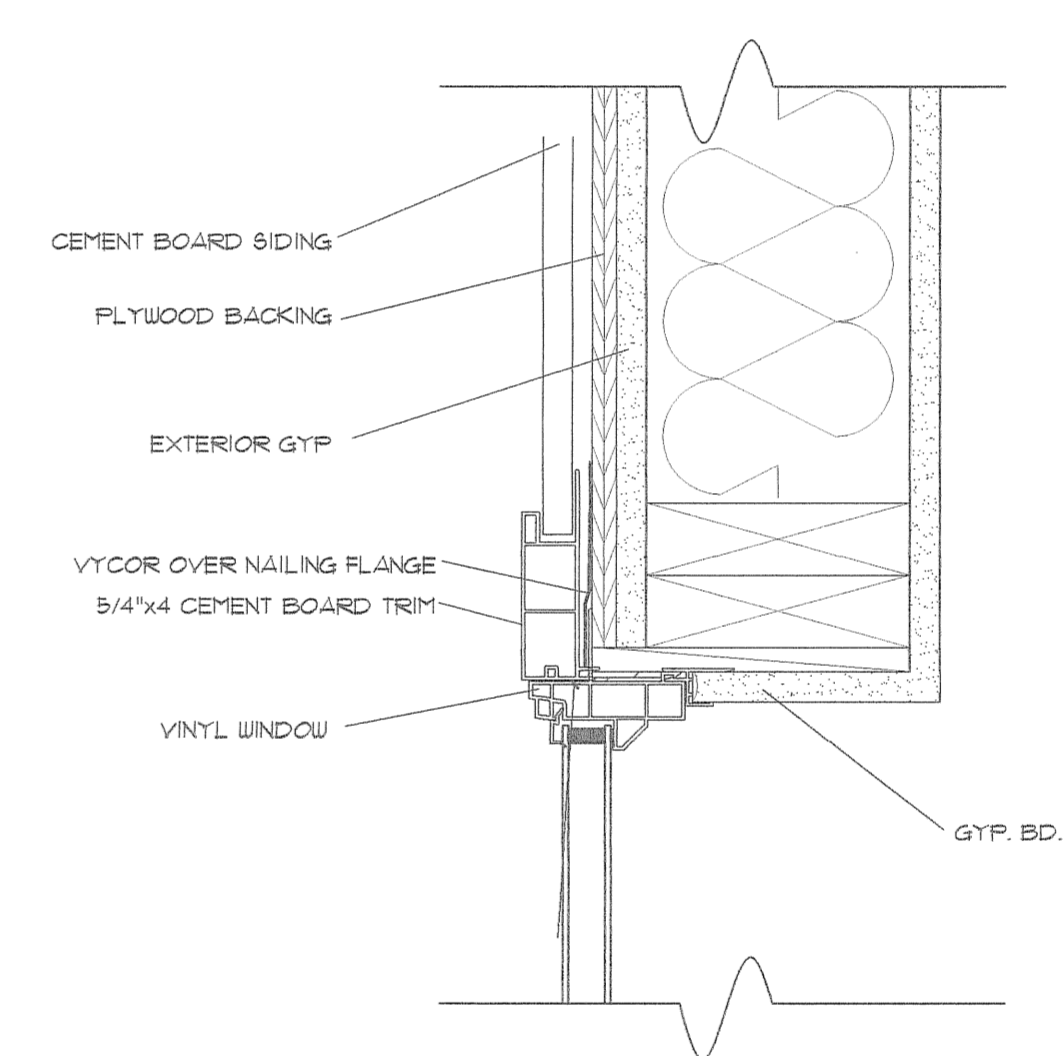
3 VINYL WINDOW IN BRICK VENEER - HEAD DETAIL
SCALE: 1-1/2"=1'-0"



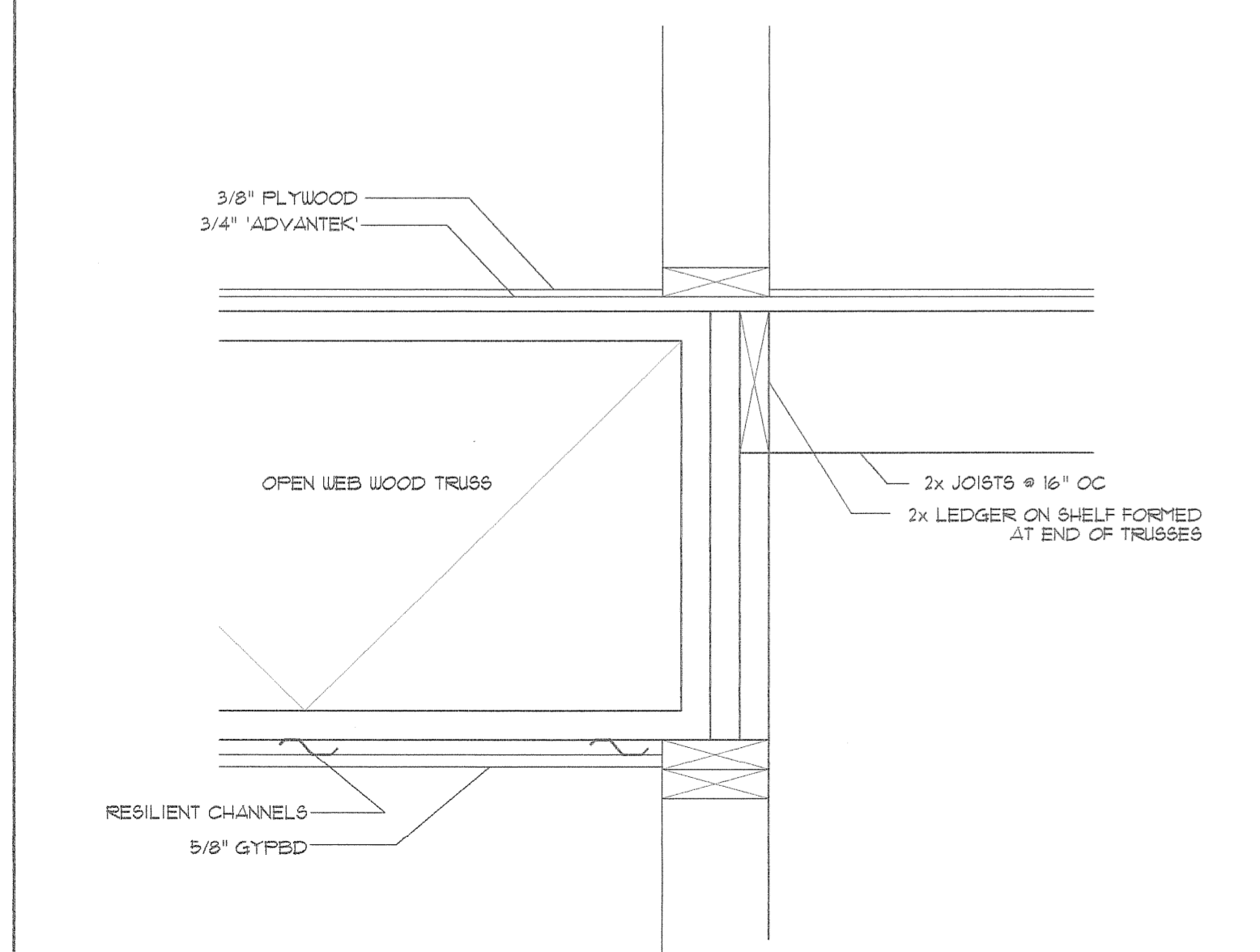
4 VINYL WINDOW IN CEMENT SIDING - HEAD DETAIL
SCALE: 3"=1'-0"



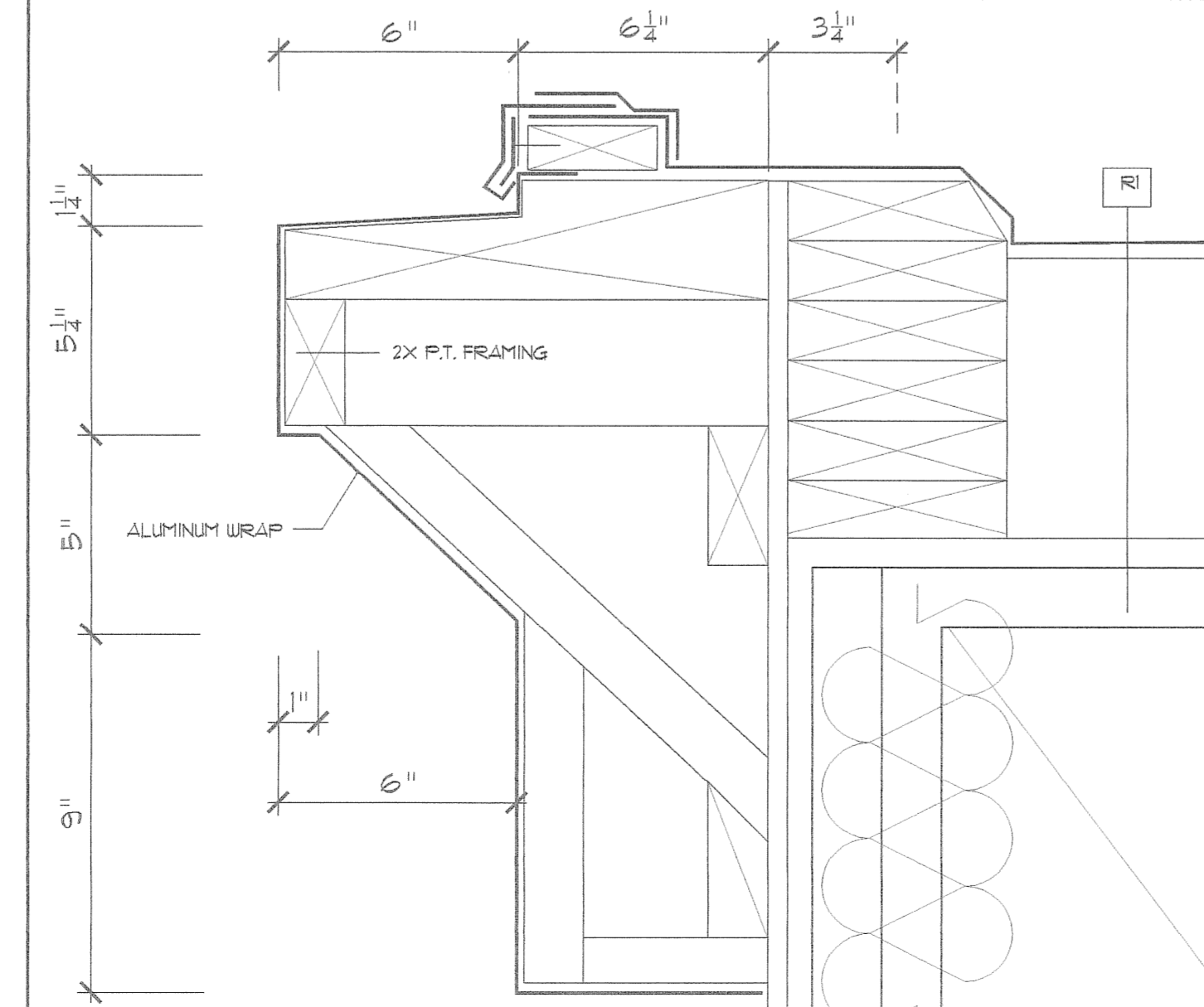
7 VINYL WINDOW IN BRICK VENEER - JAMB DETAIL
SCALE: 3"=1'-0"



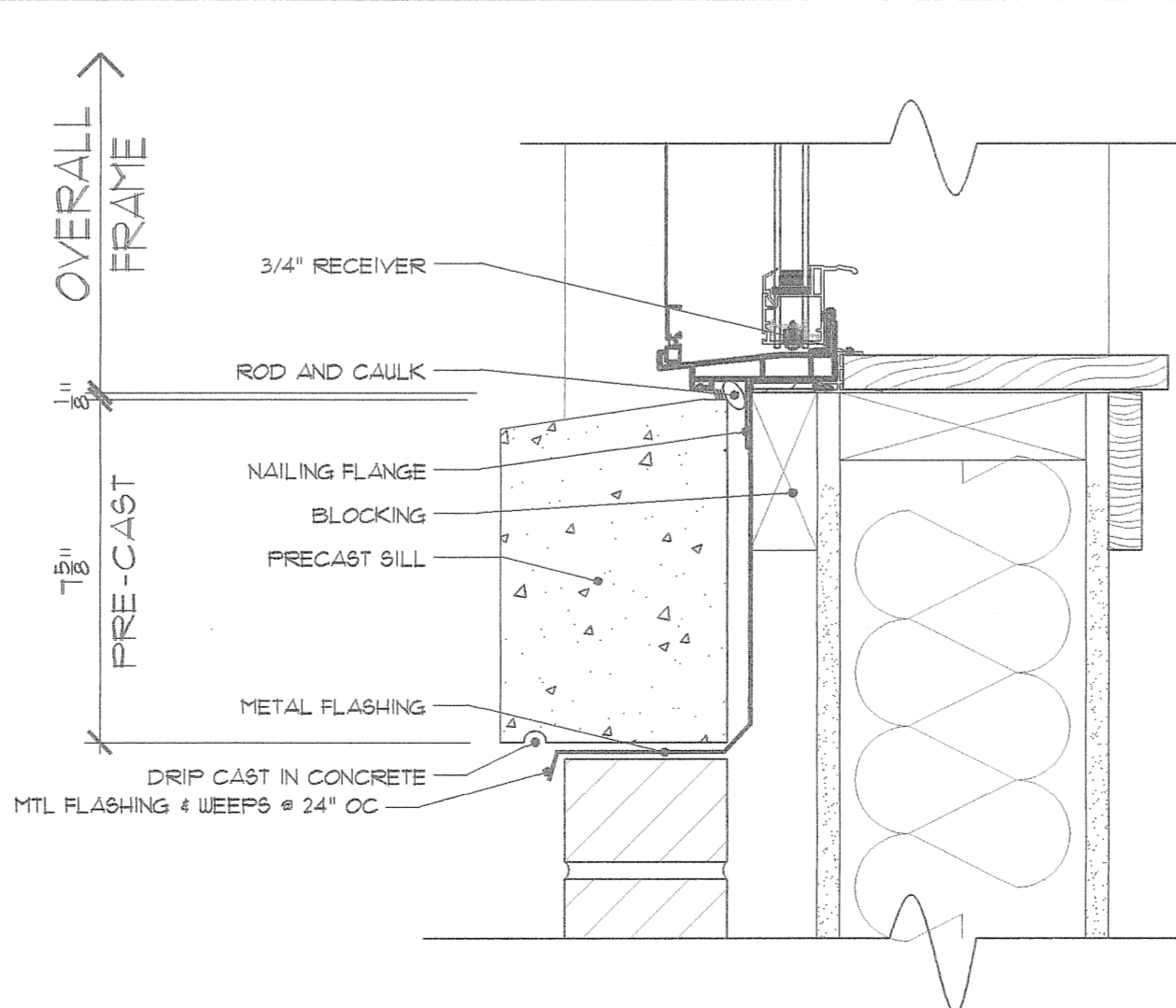
8 VINYL WINDOW IN CEMENT SIDING - JAMB DETAIL
SCALE: 3"=1'-0"



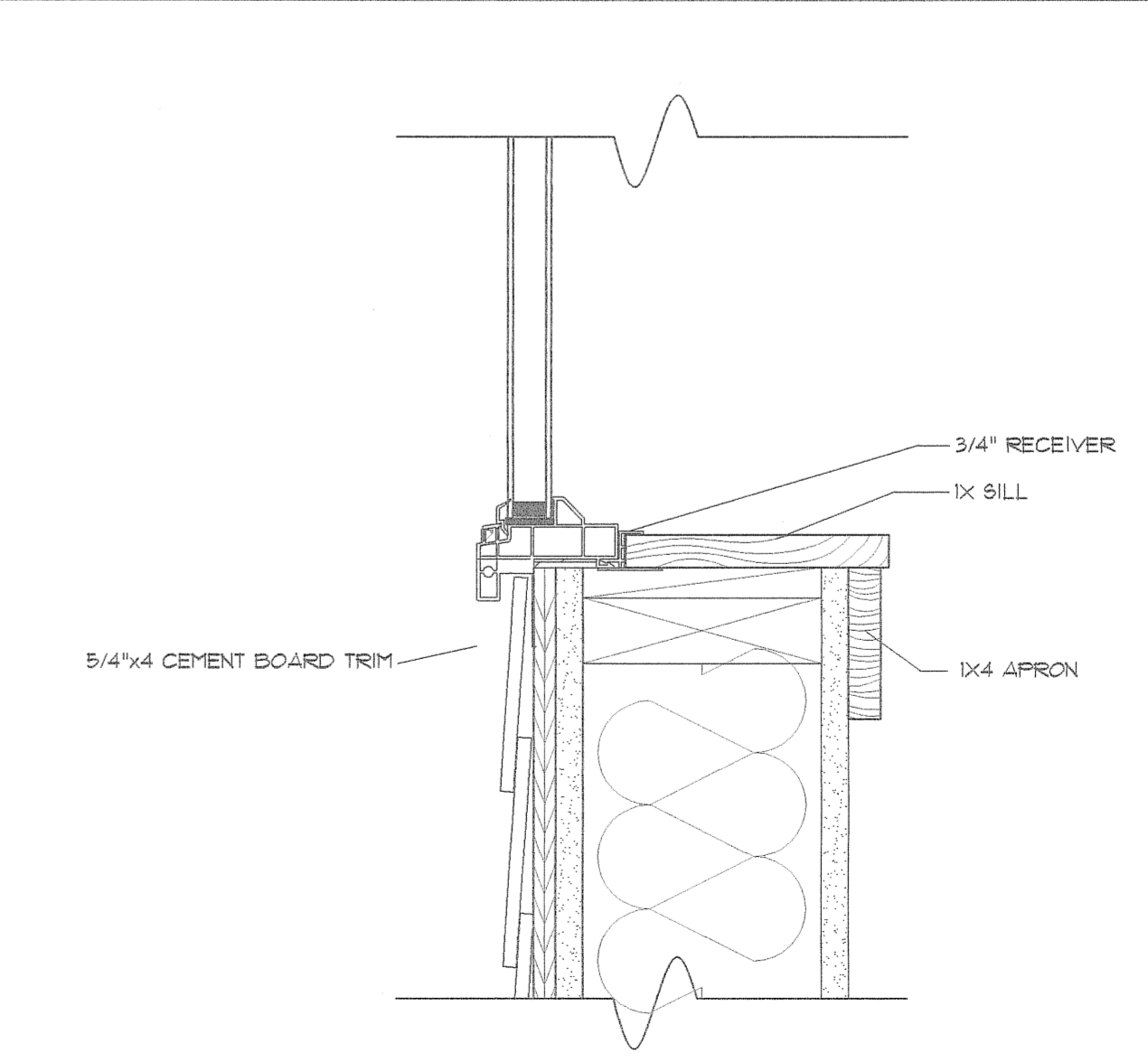
9 FLOOR/WALL DETAIL AT CORRIDOR
SCALE: 1 1/2"=1'-0"



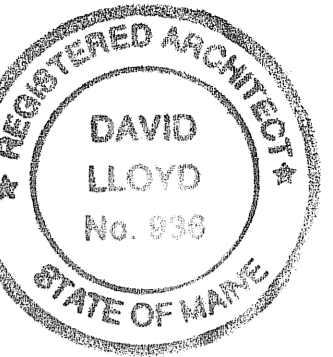
10 ROOF EDGE - CEMENT BOARD SIDING
SCALE: 3"=1'-0"



11 VINYL WINDOW IN BRICK VENEER - SILL DETAIL
SCALE: 3"=1'-0"



12 VINYL WINDOW IN CEMENT SIDING - SILL DETAIL
SCALE: 3"=1'-0"



Owner:
315 VALLEY STREET, L.P.
P.O. BOX 560
PORTLAND, MAINE 04112

Architect:
ARCHETYPE, P.A.
ARCHITECTS
48 Union Wharf Portland, Maine 04101
(207) 772-6022 Fax (207) 772-4056

Project:
VALLEY STREET APARTMENTS
GILMAN STREET
PORTLAND, MAINE 04102

Scale: As Noted

Date: NOV 21 2005

Drawing:
DETAILS

A.10