

Owner:
315 VALLEY STREET, LP
P.O. BOX 560
PORTLAND, MAINE 04112

Architect:
ARCHETYPE, P.A.
ARCHITECTS
48 Union Wharf Portland, Maine 04101
(207) 772-6022 Fax (207) 772-4056

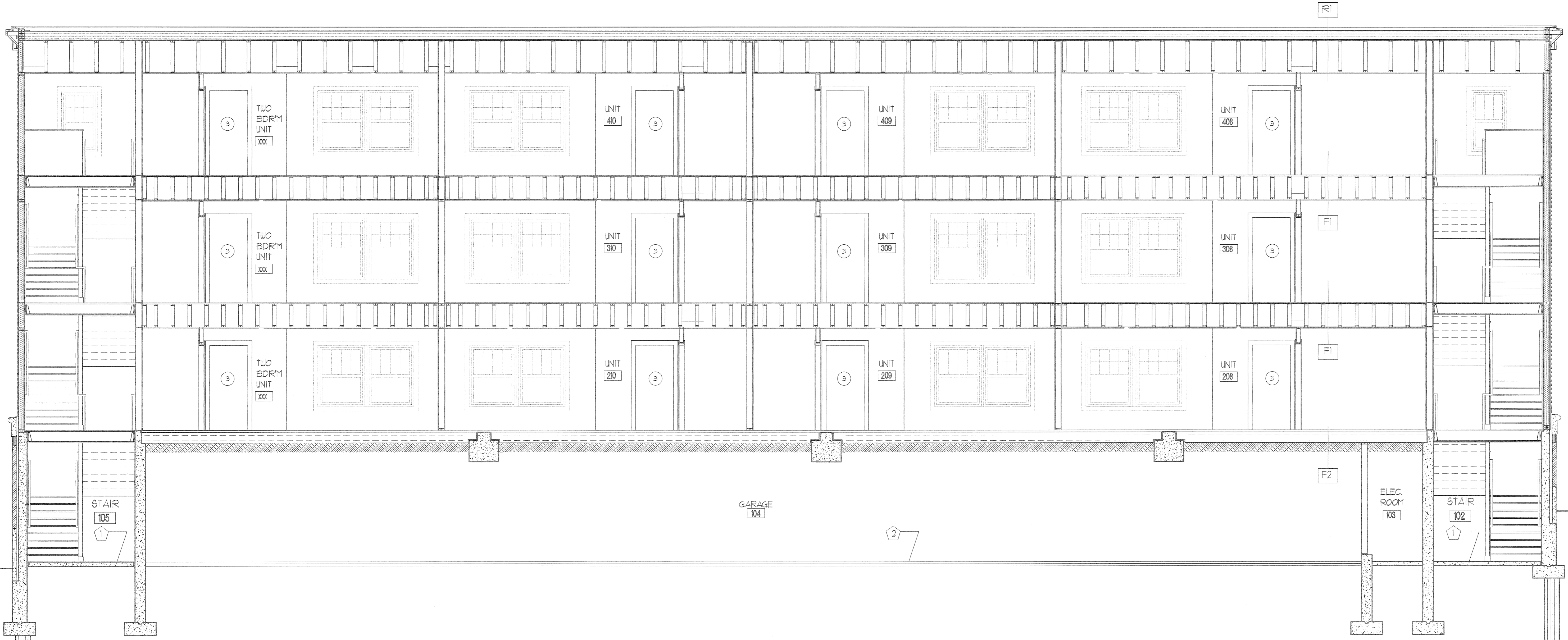
Project:
VALLEY STREET APARTMENTS
GILMAN STREET
PORTLAND, MAINE 04102

Date:
NOV 21 2005

Scale:
As Noted

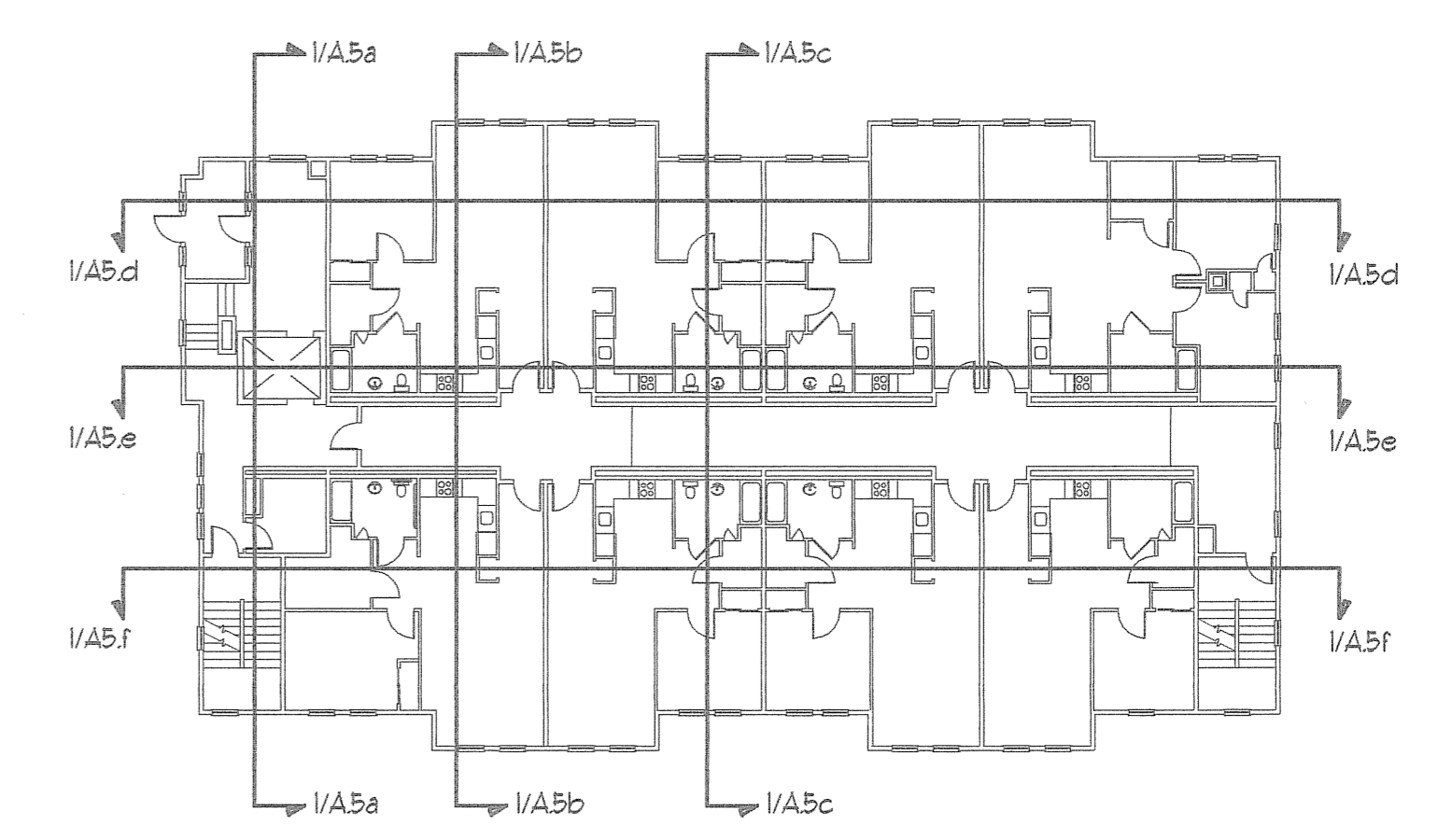
Drawing:
BUILDING SECTION

A.5f



1
A5f BUILDING SECTION
SCALE: 1/4" = 1'-0"

- KEYED NOTES:
- ① CONCRETE SLAB
 - ② BITUMINOUS PAVEMENT
 - ③ FLOOR DRAIN



KEY PLAN
NO SCALE