

Owner:
 315 VALLEY STREET, LP
 P.O. BOX 560
 PORTLAND, MAINE 04112

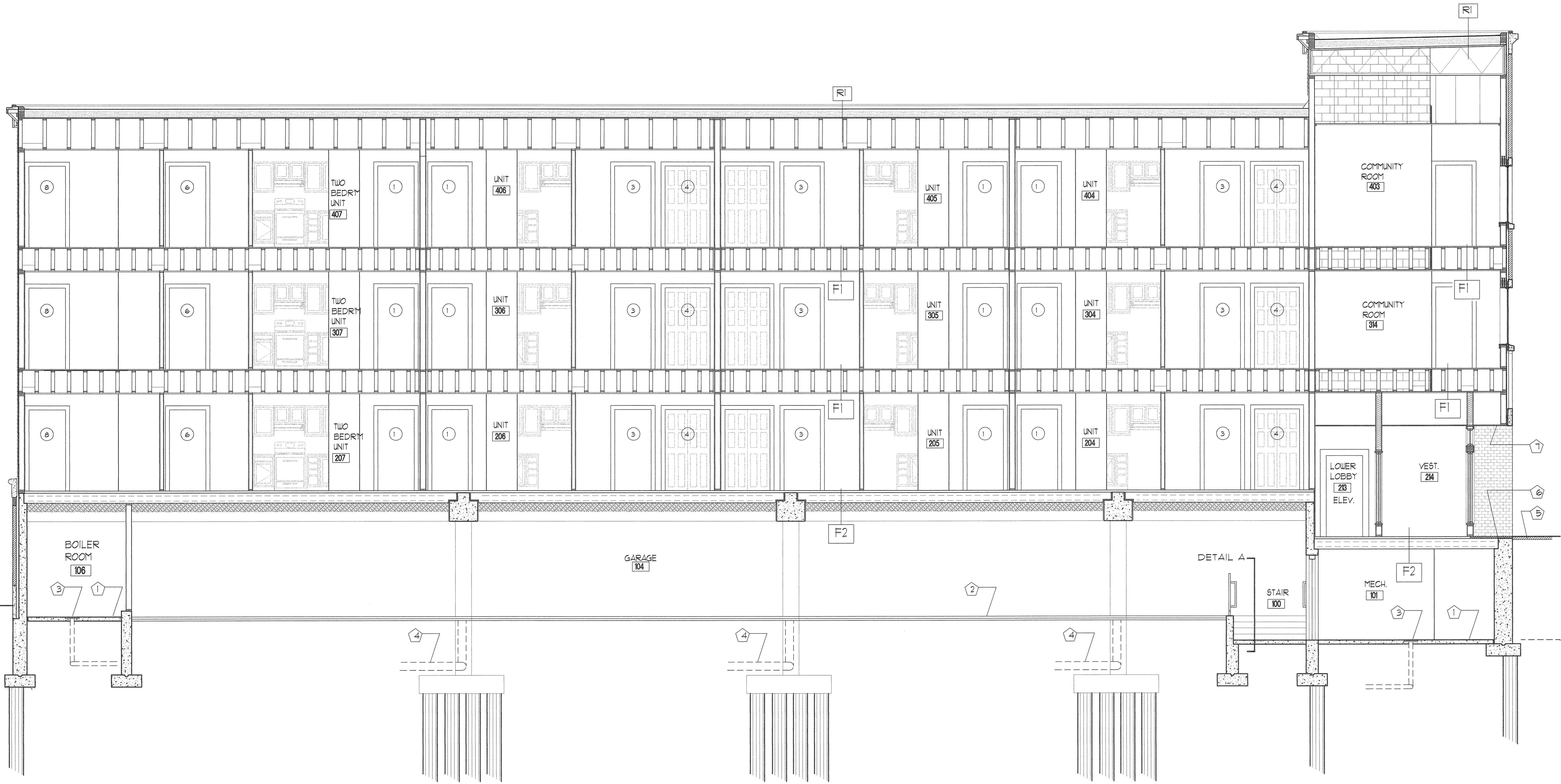
Architect:
ARCHETYPE, P.A.
ARCHITECTS
 48 Union Wharf Portland, Maine 04101
 (207) 772-6022 Fax (207) 772-4056

Project:
 VALLEY STREET APARTMENTS
 GILMAN STREET
 PORTLAND, MAINE 04102

Date: NOV 21 2005
 Scale: As Noted

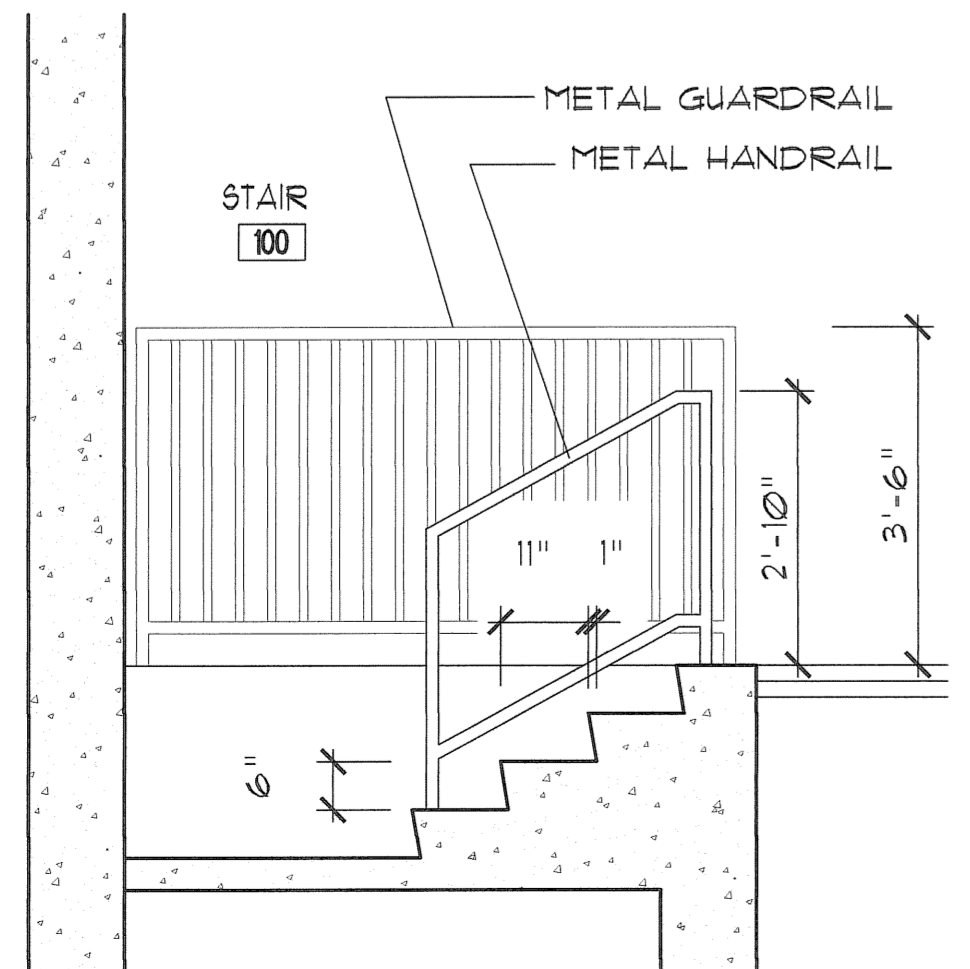
Drawing:
BUILDING SECTION

A.5d

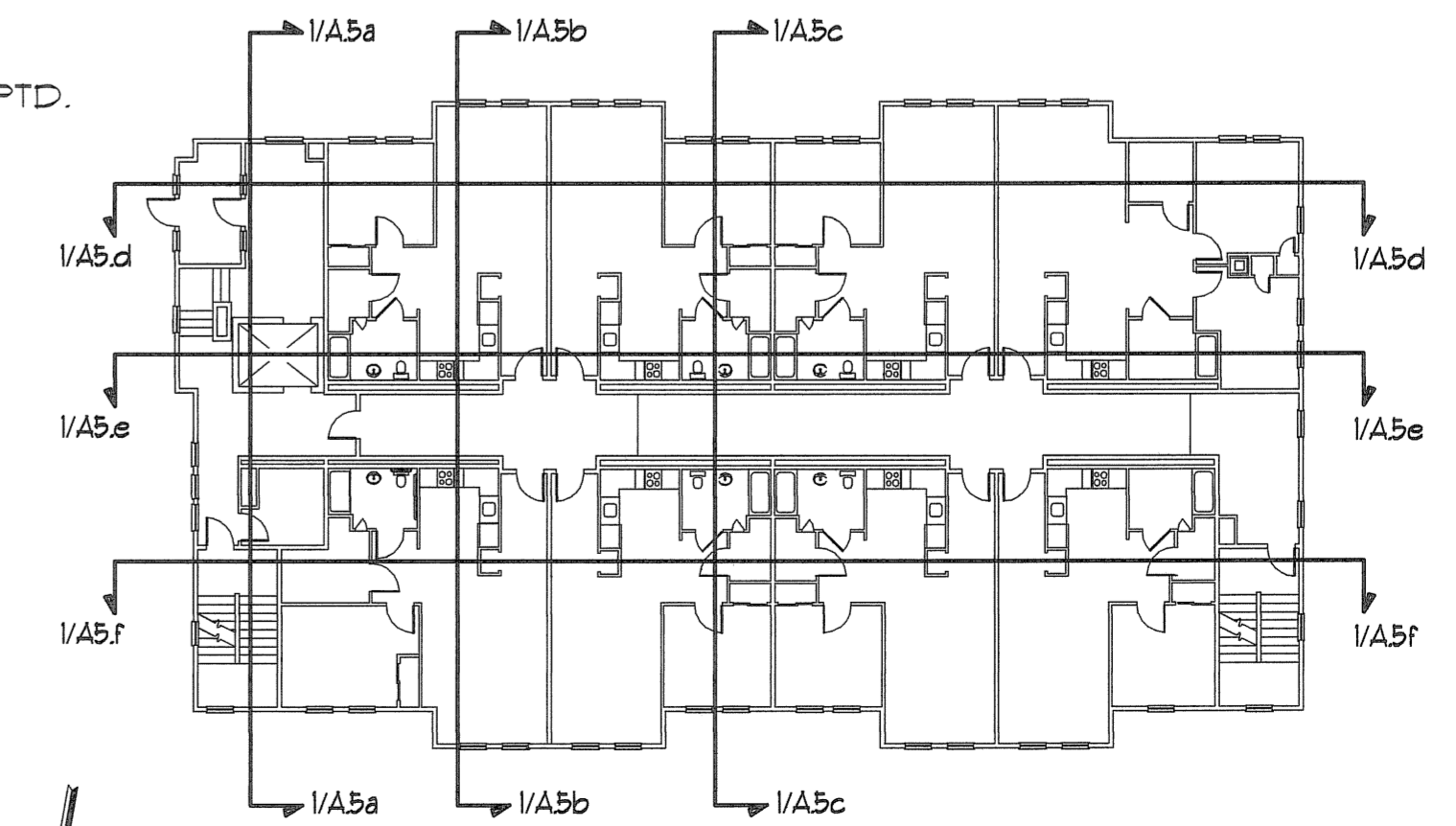


1
A5d BUILDING SECTION
 SCALE: 1/4" = 1'-0"

- KEYED NOTES:
- ① CONCRETE SLAB
 - ② BITUMINOUS PAVEMENT
 - ③ FLOOR DRAIN
 - ④ ROOF DRAIN
 - ⑤ BRICK PAVERS
 - ⑥ WALK OFF MAT
 - ⑦ MDO - PTD.



A DETAIL
 SCALE: 1/2" = 1'-0"



KEY PLAN
 NO SCALE