

Owner:  
315 VALLEY STREET, LP  
P.O. BOX 560  
PORTLAND, MAINE 04112

Architect:  
**ARCHETYPE, P.A.**  
**ARCHITECTS**  
48 Union Wharf Portland, Maine 04101  
(207) 772-6022 Fax (207) 772-4056

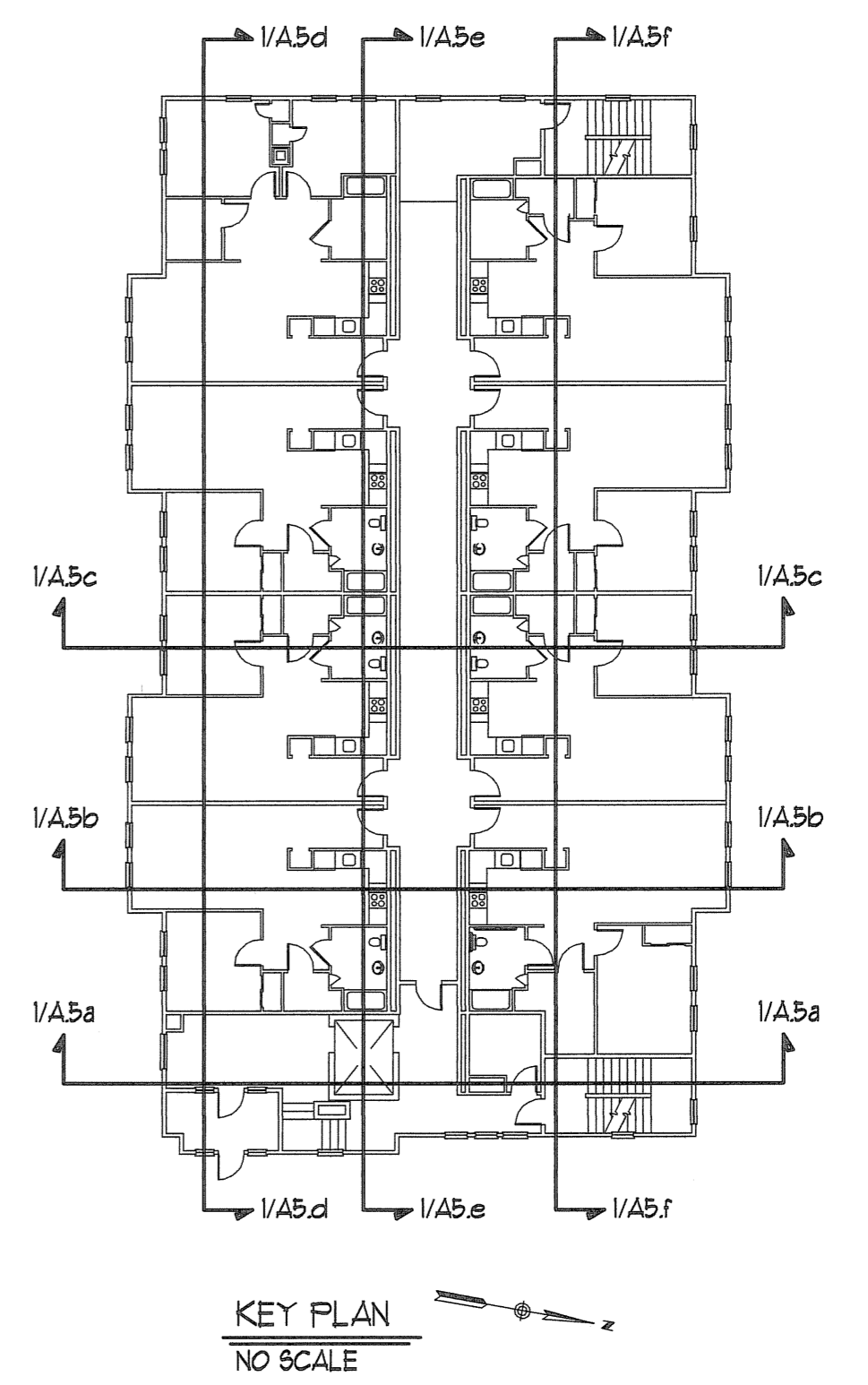
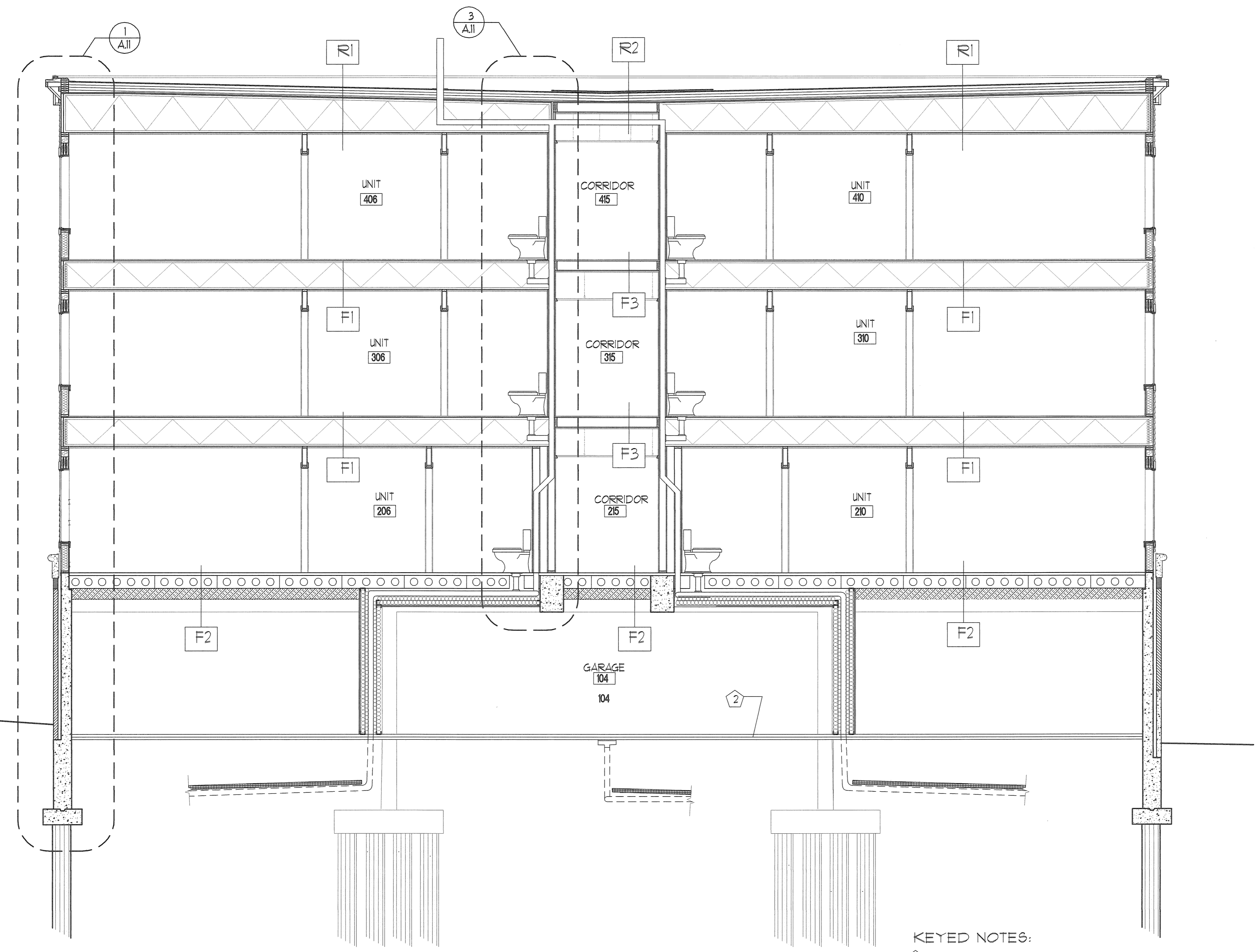
Project:  
VALLEY STREET APARTMENTS  
GILMAN STREET  
PORTLAND, MAINE 04102

Date: NOV 21 2005  
Scale: As Noted

Drawing:  
**BUILDING SECTION**

**A.5c**

MAIN ROOF ELEV. - 62'-1/2"  
4th FLOOR ELEV. - 51'-11 1/2"  
3rd FLOOR ELEV. - 41'-8 3/4"  
2nd FLOOR ELEV. - 31'-6"  
ENTRY ELEV. - 21'-8"  
GARAGE ENTRY ELEV. - 21'-2"



**1**  
**A5c** BUILDING SECTION  
SCALE: 1/4" = 1'-0"

- KEYED NOTES:
- ① NOT USED
  - ② BITUMINOUS PAVEMENT
  - ③ NOT USED