

Owner:  
 315 VALLEY STREET, LP  
 P.O. BOX 560  
 PORTLAND, MAINE 04112

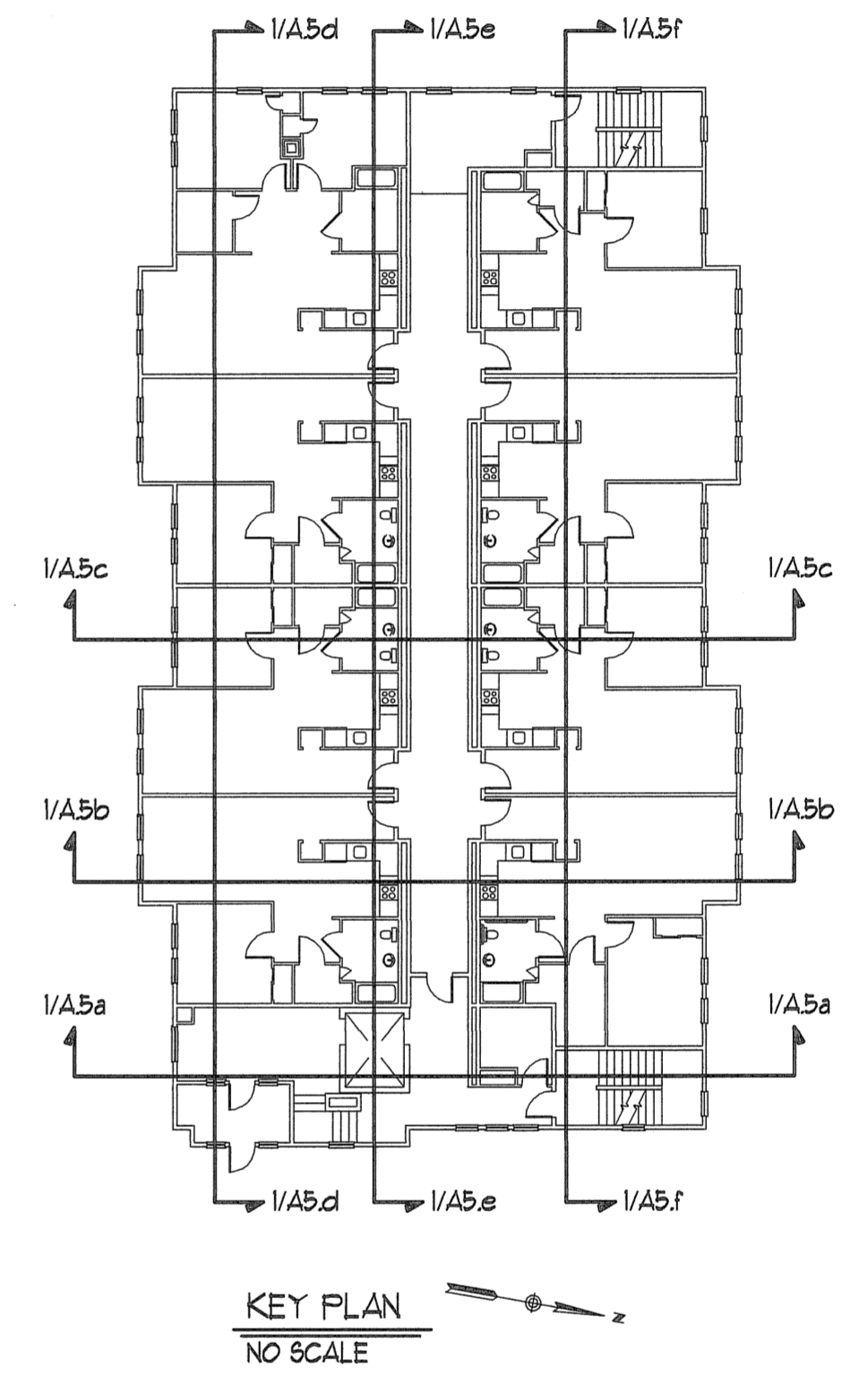
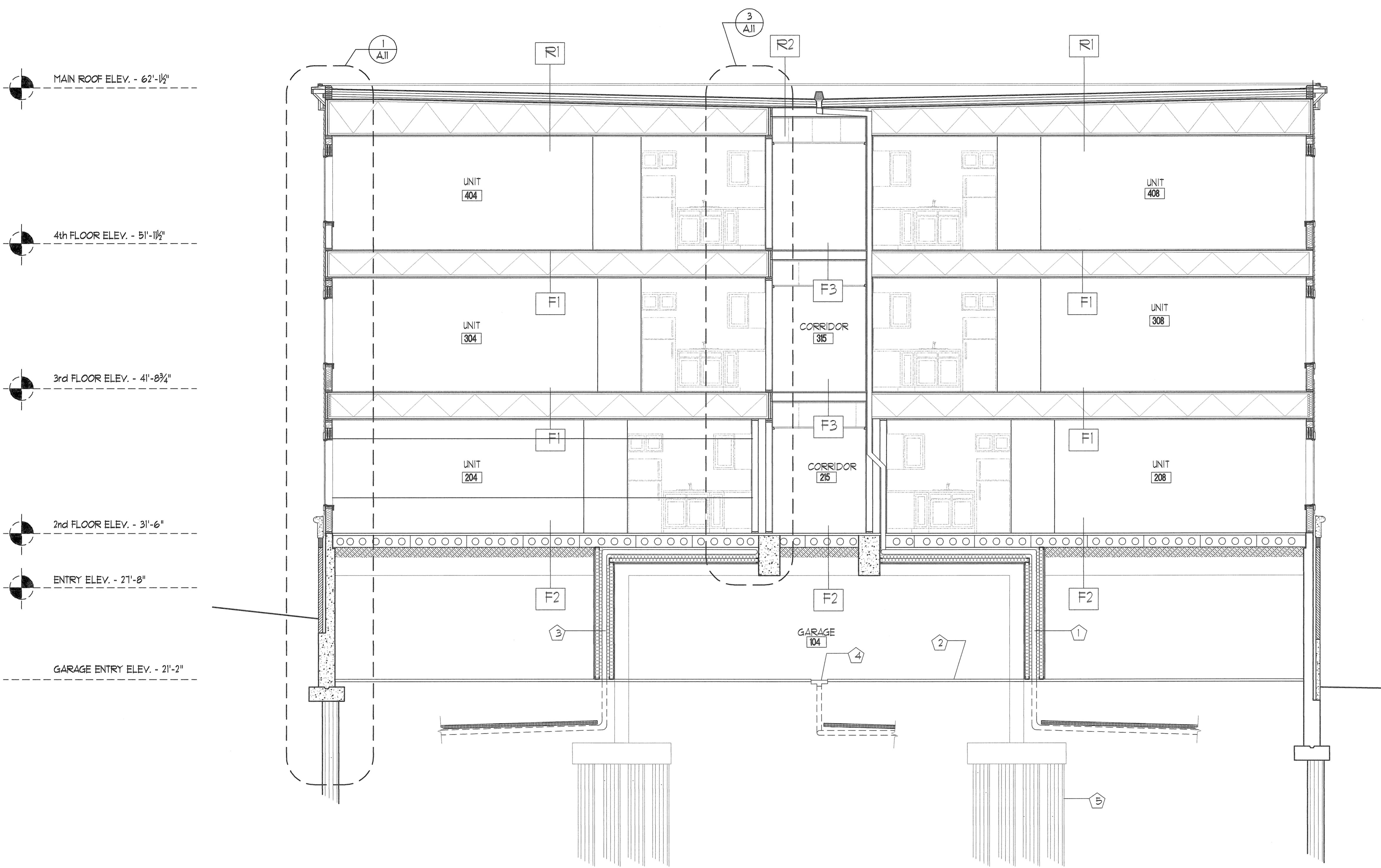
Architect:  
**ARCHETYPE, P.A.**  
**ARCHITECTS**  
 48 Union Wharf Portland, Maine 04101  
 (207) 772-6022 Fax (207) 772-4056

Project:  
 VALLEY STREET APARTMENTS  
 GILMAN STREET  
 PORTLAND, MAINE 04102

Date:  
 NOV 21 2005  
 Scale: As Noted  
 REVISED NOV. 9, 2004.

Drawing:  
**BUILDING SECTION**

**A.5b**



**1**  
**A5b** BUILDING SECTION  
 SCALE: 1/4" = 1'-0"

KEYED NOTES:

- ① 4" ROOF LEADER DOWN. ENCLOSED IN INSULATED SOFFIT/CHASE. SUBSURFACE PIPING INSULATED. SEE MECHANICALS. (TYP. OF 3)
- ② BITUMINOUS PAVEMENT
- ③ 4" SANITARY DRAIN LINE DOWN. ENCLOSED IN INSULATED SOFFIT/CHASE. SUBSURFACE PIPING INSULATED. SEE MECHANICALS. (TYP. OF 3).
- ④ FLOOR DRAIN W/GREASE TRAP. SUBSURFACE PIPING INSULATED. SEE CIVILS. (TYP. OF 2)
- ⑤ TIMBER PILES (TYP.)