

Owner:
 SHALOM HOUSE, INC.
 P.O. BOX 560
 PORTLAND, MAINE 04112

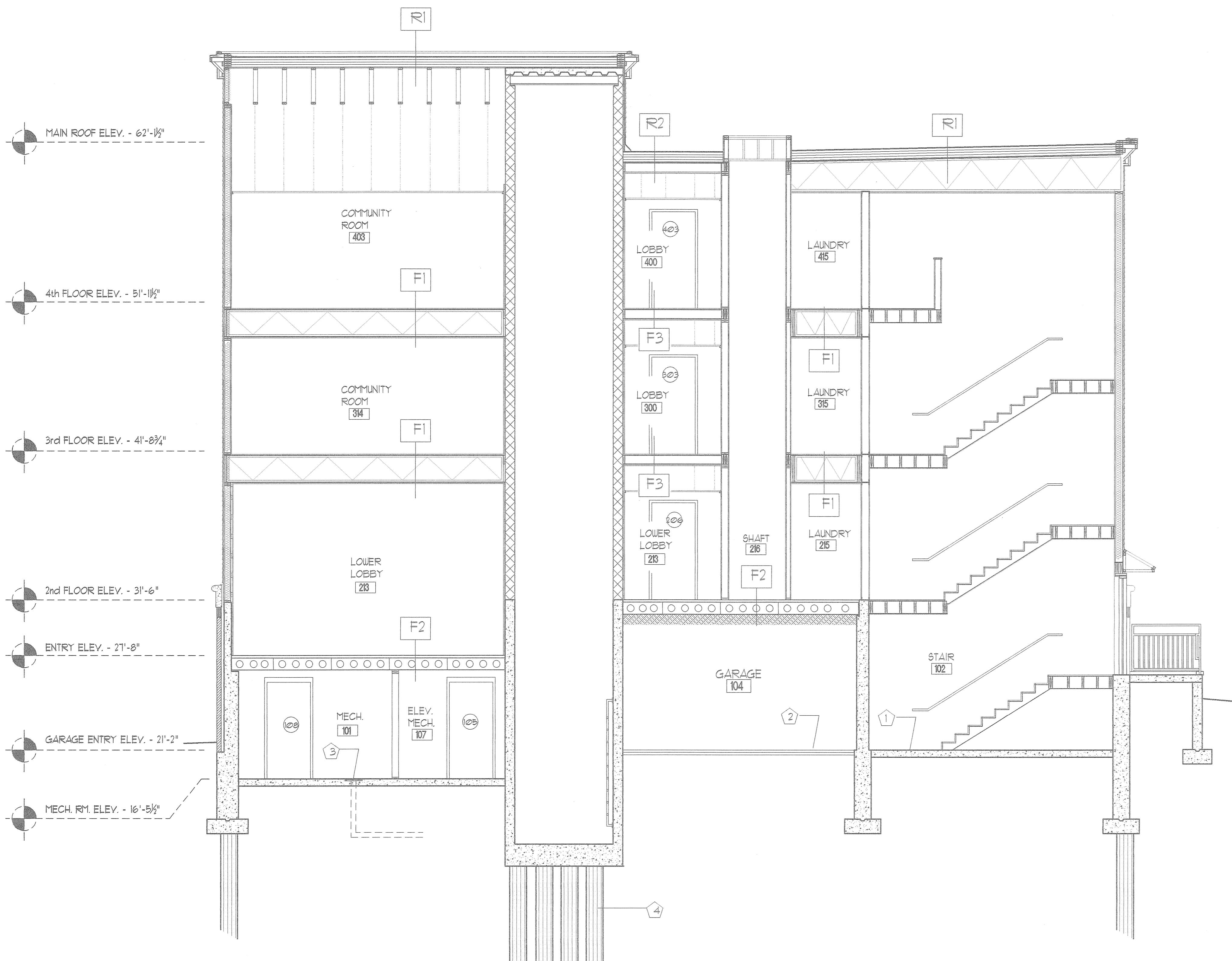
Architect:
 ARCHETYPE, P.A.
 ARCHITECTS
 48 Union Wharf Portland, Maine 04101
 (207) 772-6022 Fax (207) 772-4056

Project:
 GILMAN STREET
 APARTMENTS
 PORTLAND, MAINE 04102

Date: NOV 21 2005
 Scale: As Noted

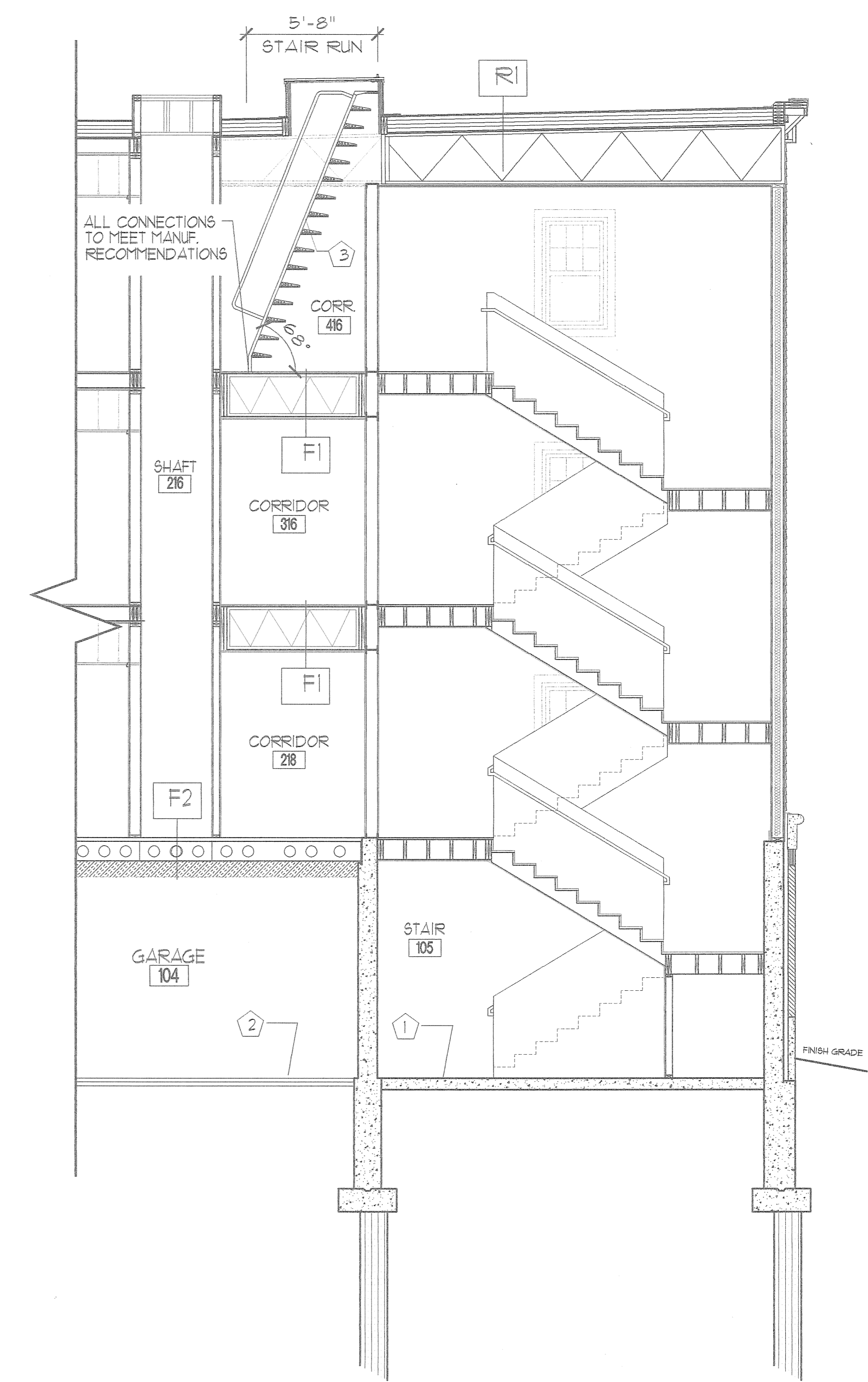
Drawing:
 BUILDING SECTION

A.5a



1 BUILDING SECTION
 SCALE: 1/4" = 1'-0"

- KEYED NOTES:
- ① CONCRETE SLAB
 - ② BITUMINOUS PAVEMENT
 - ③ FLOOR DRAIN
 - ④ FOUNDATION PIER (TYP.)



KEYED NOTES:
 ① CONCRETE SLAB
 ② BITUMINOUS PAVEMENT
 ③ ALTERNATING TREAD STAIR/ROOF HATCH

2 BUILDING SECTION
 SCALE: 1/4" = 1'-0"

