

Owner:
 315 VALLEY STREET, LP
 P.O. BOX 560
 PORTLAND, MAINE 04112

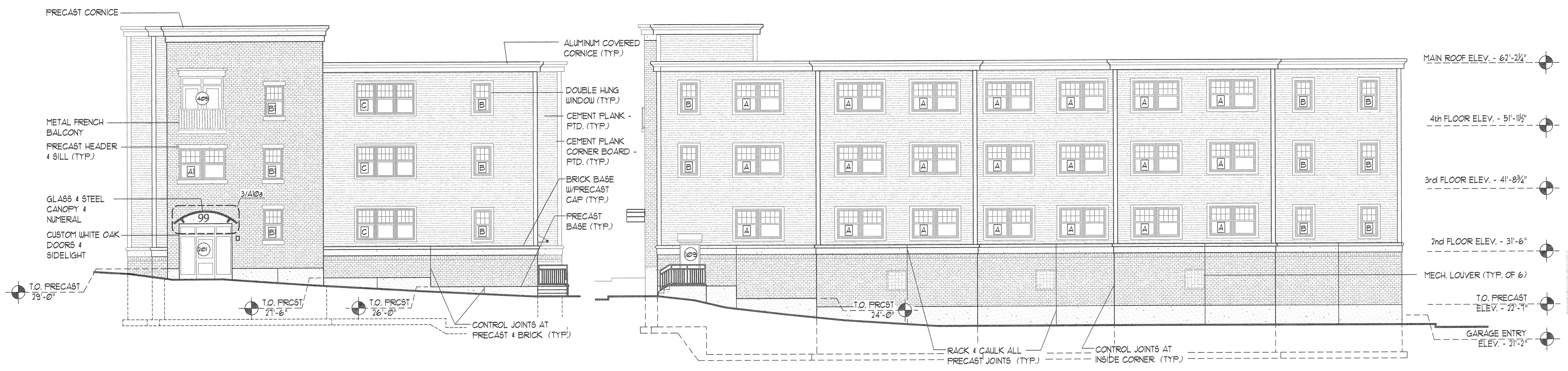
Architect:
ARCHETYPE, P.A.
ARCHITECTS
 48 Union Wharf Portland, Maine 04101
 (207) 772-6022 Fax (207) 772-4056

Project:
 VALLEY STREET APARTMENTS
 GILMAN STREET
 PORTLAND, MAINE 04102

Date: NOV 21 2005
 Scale: As Noted

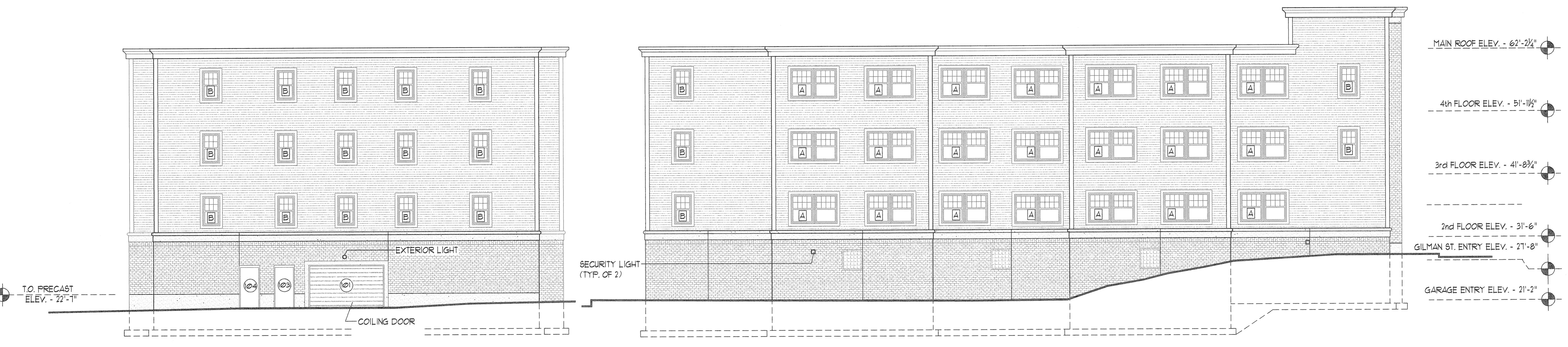
Drawing:
EXTERIOR ELEVATIONS

A.4



2 EAST (GILMAN STREET) ELEVATION
 A4 SCALE: 1/8" = 1'-0"

1 NORTH ELEVATION
 A4 SCALE: 1/8" = 1'-0"



4 WEST (VALLEY STREET) ELEVATION
 A4 SCALE: 1/8" = 1'-0"

3 SOUTH ELEVATION
 A4 SCALE: 1/8" = 1'-0"