

Owner:  
315 VALLEY STREET, LP  
P.O. BOX 560  
PORTLAND, MAINE 04112

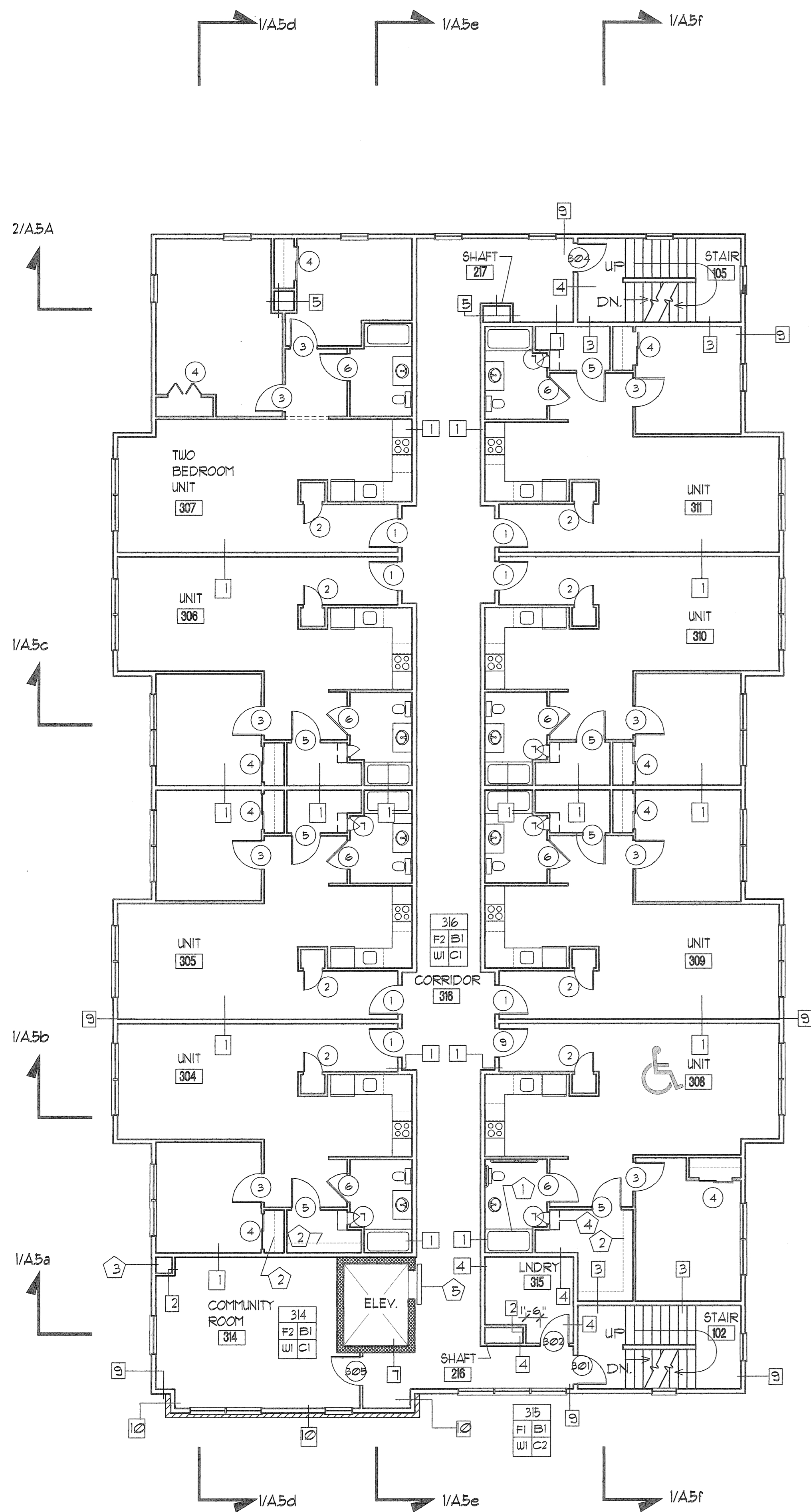
Architect:  
**ARCHETYPE, P.A.**  
ARCHITECTS  
48 Union Wharf Portland, Maine 04101  
(207) 772-6022 Fax (207) 772-4056

Project:  
VALLEY STREET APARTMENTS  
GILMAN STREET  
PORTLAND, MAINE 04102

Date: NOV 21 2005  
Scale: As Noted

Drawing:  
**FIRST, SECOND & THIRD FLOOR PLANS**

**A.1**

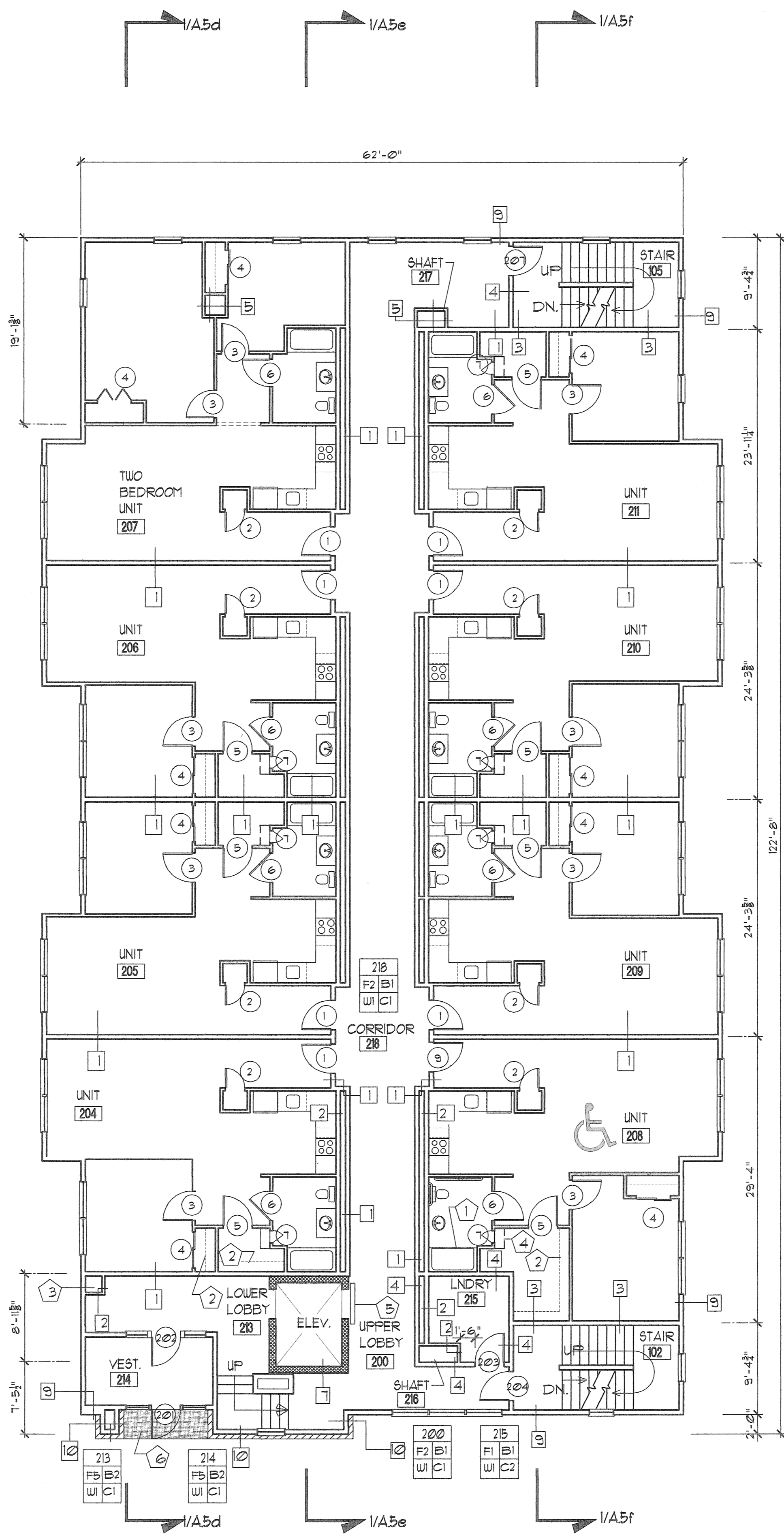


GENERAL NOTE - PARTITION WALLS WITHIN UNITS ARE WALL TYPE 2 UNLESS NOTED OTHERWISE.

KEYED NOTES

- 1 TRANSFER STYLE TUB
- 2 WIRE SHELF W/HANG BAR (TYP AT CLOSETS)
- 3 SPRINKLER RISER
- 4 5 TIER WIRE SHELVING (TYP AT DOOR 1)
- 5 ELEVATOR SMOKE SHUTTER

3 THIRD FLOOR PLAN  
SCALE: 1/8" = 1'-0"



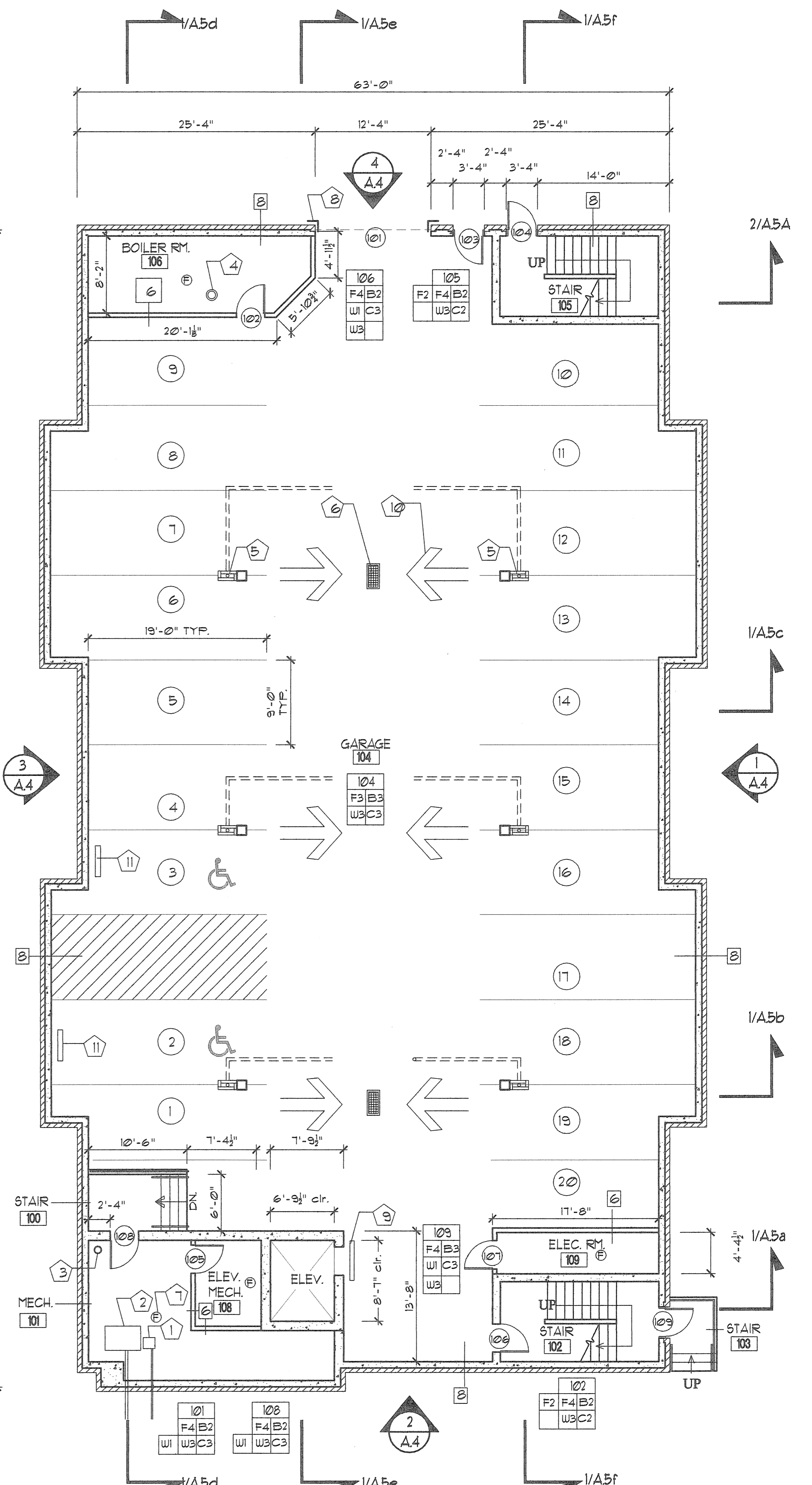
GENERAL NOTE - PARTITION WALLS WITHIN UNITS ARE WALL TYPE 2 UNLESS NOTED OTHERWISE.

FINISH NOTE - SEE A.8a FOR FINISH KEY AND TYPICAL UNIT FINISHES.

KEYED NOTES

- 1 ROLL-IN SHOWER
- 2 WIRE SHELF W/HANG BAR (TYP AT CLOSETS)
- 3 SPRINKLER RISER
- 4 5 TIER WIRE SHELVING (TYP AT DOOR 1)
- 5 ELEVATOR SMOKE SHUTTER
- 6 WALK OFF MATT AT ENTRY

2 SECOND FLOOR PLAN  
SCALE: 1/8" = 1'-0"



KEYED NOTES

- 1 DOMESTIC WATER ENTRY
- 2 SPRINKLER ENTRY
- 3 SPRINKLER RISER
- 4 METAL CHIMNEY
- 5 ROOF/SANITARY DRAIN (TYP. OF 6)
- 6 FLOOR DRAIN (TYP. OF 2)
- 7 FLOOR DRAIN (TYP. OF 4)
- 8 CORNER GUARDS (TYP. OF 2)
- 9 ELEVATOR SMOKE SHUTTER
- 10 SLOPE PAVEMENT TO DRAIN
- 11 WALL MTD. HC PARKING SIGN.

1 FIRST FLOOR PLAN  
SCALE: 1/8" = 1'-0"