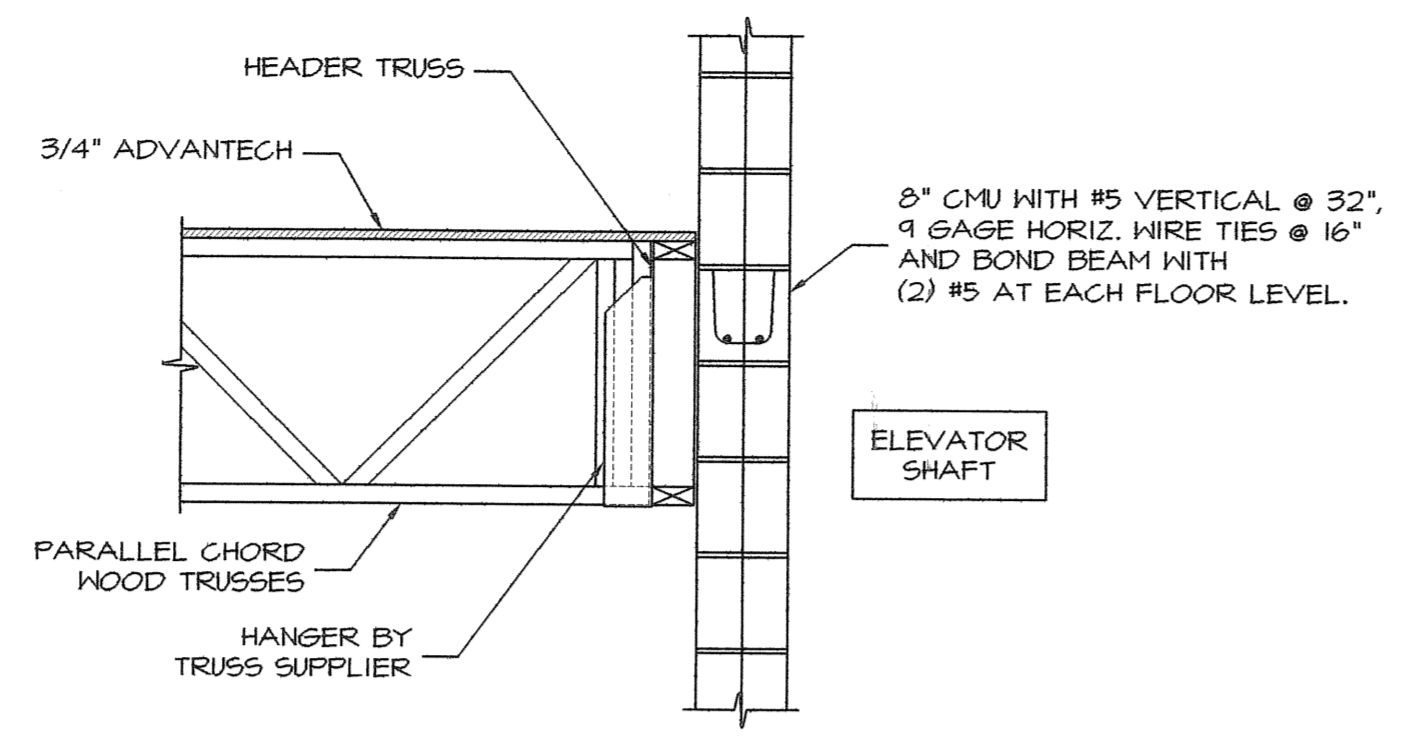
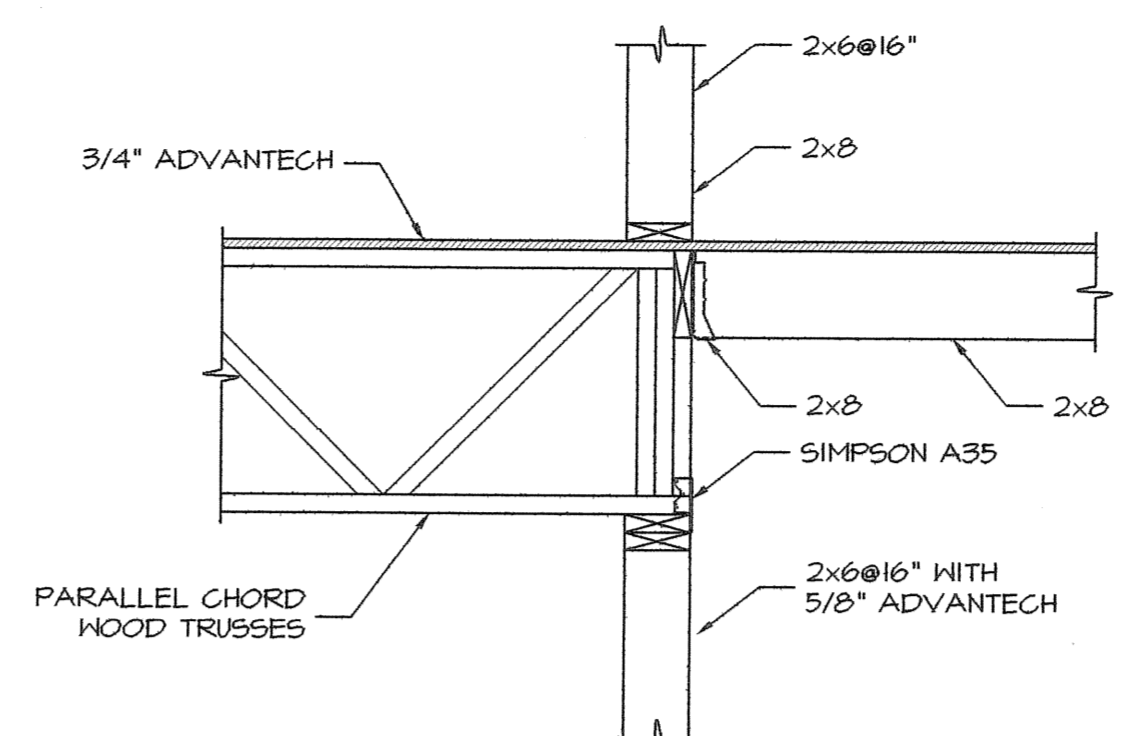


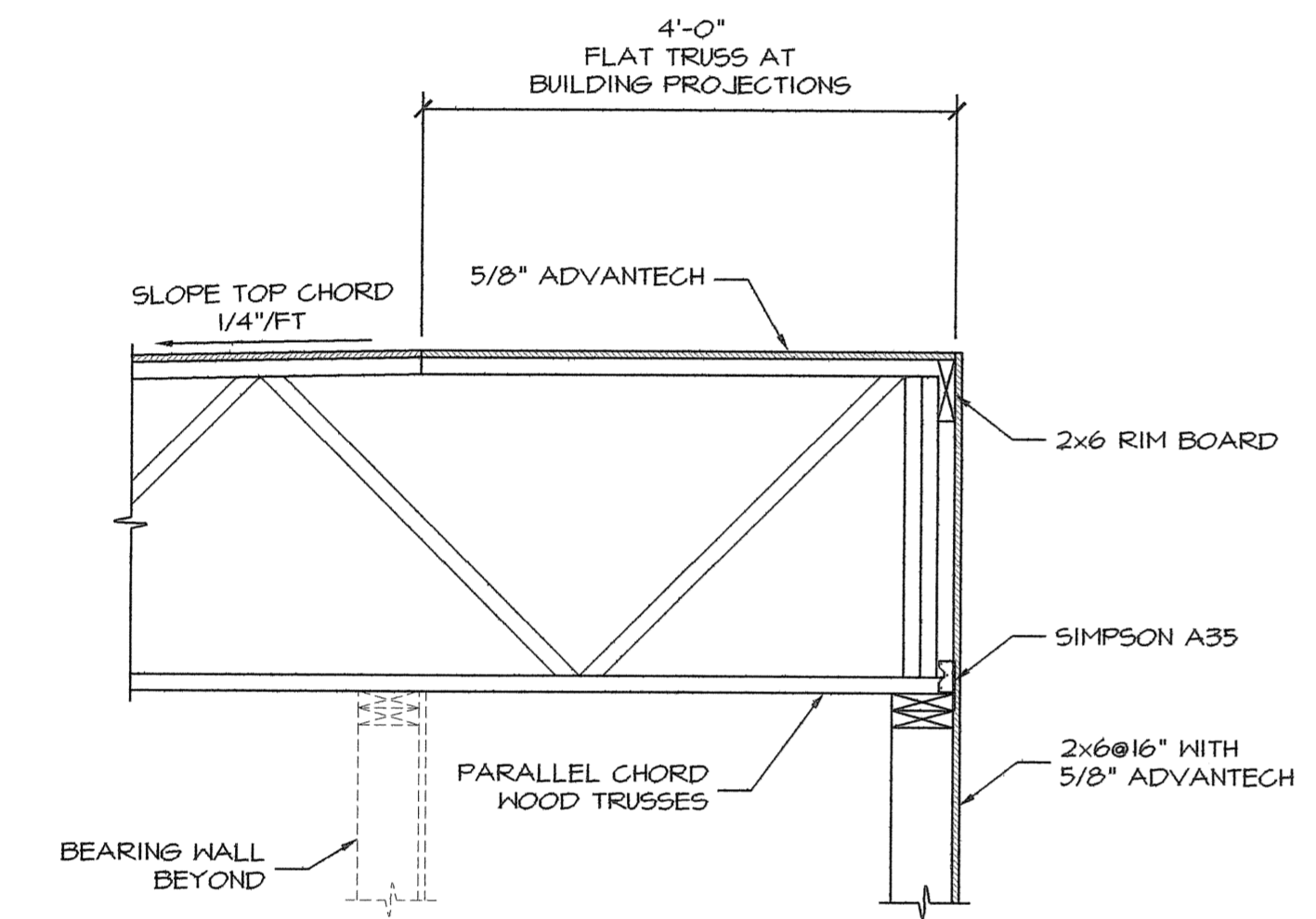
SECTION 1
3/4"=1'-0" S4



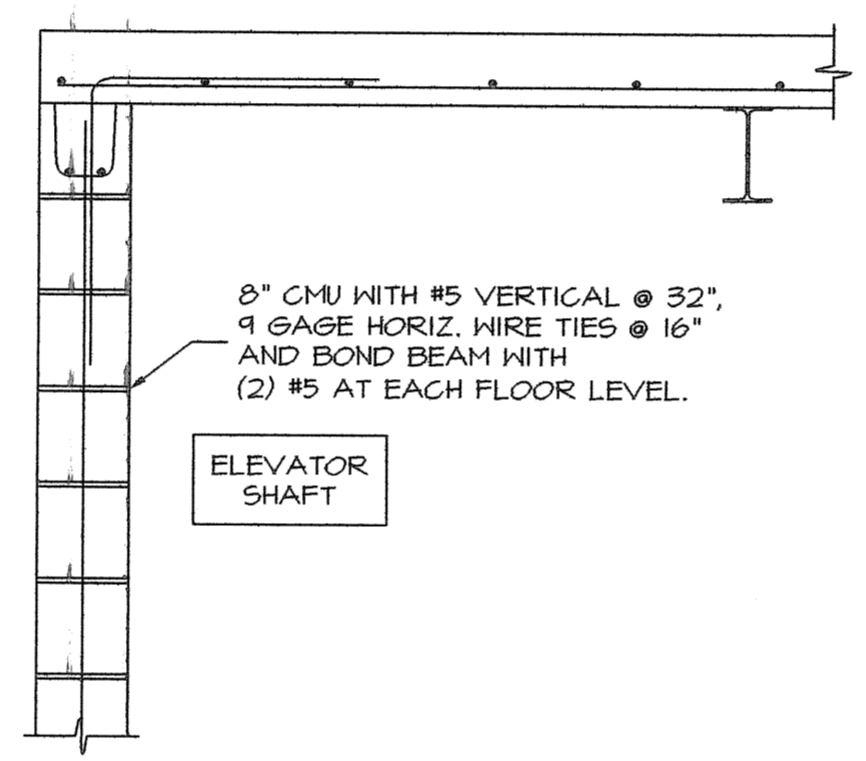
SECTION 2
3/4"=1'-0" S4



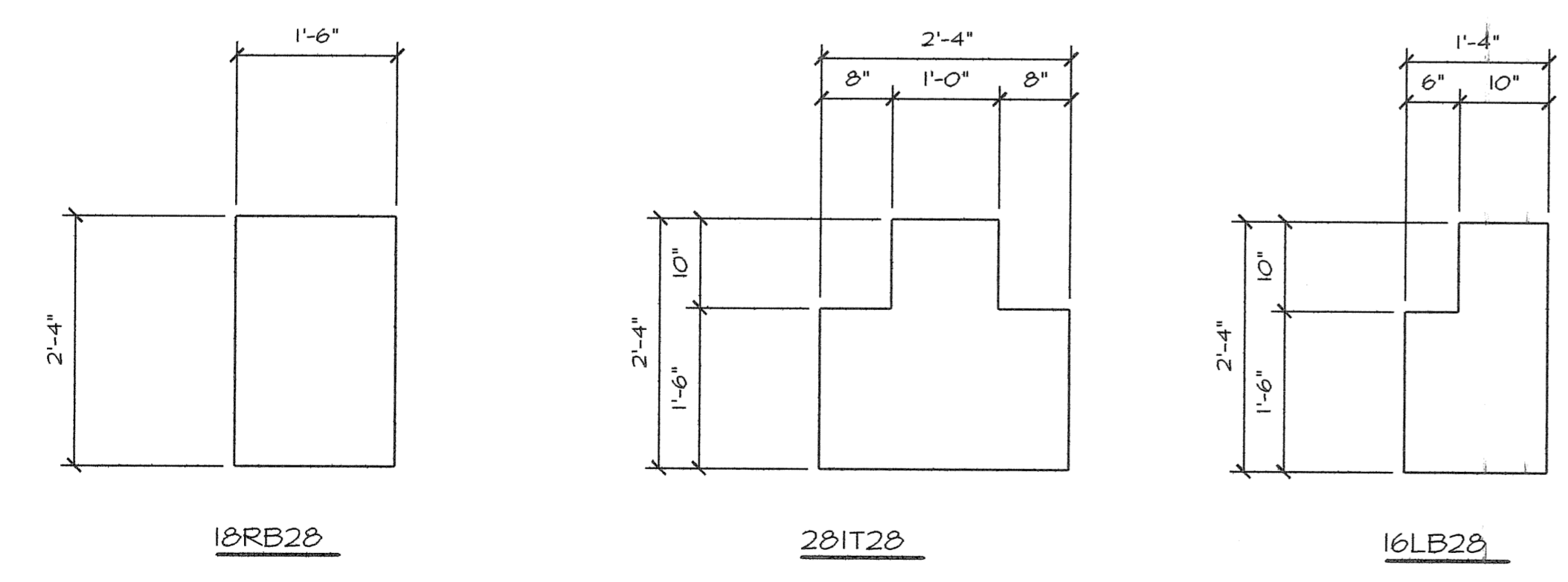
SECTION 3
3/4"=1'-0" S4



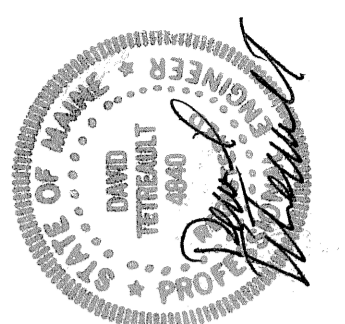
SECTION 4
3/4"=1'-0" S4



SECTION 5
3/4"=1'-0" S4



PRECAST CONCRETE SECTIONS
3/4"=1'-0"



Owner:
315 VALLEY STREET, LP
P.O. BOX 560
PORTLAND, MAINE 04112

Architect:
ARCHETYPE, P.A.
ARCHITECTS
48 Union Wharf Portland, Maine 04101
(207) 772-6022 Fax (207) 772-4056

Project:
VALLEY STREET APARTMENTS
GILMAN STREET
PORTLAND, MAINE 04102

Date: 11/18/05
Scale: As Noted

Drawing:
FRAMING
SECTIONS AND DETAILS

S.6