

Owner:  
 315 VALLEY STREET, LP  
 P.O. BOX 560  
 PORTLAND, MAINE 04112

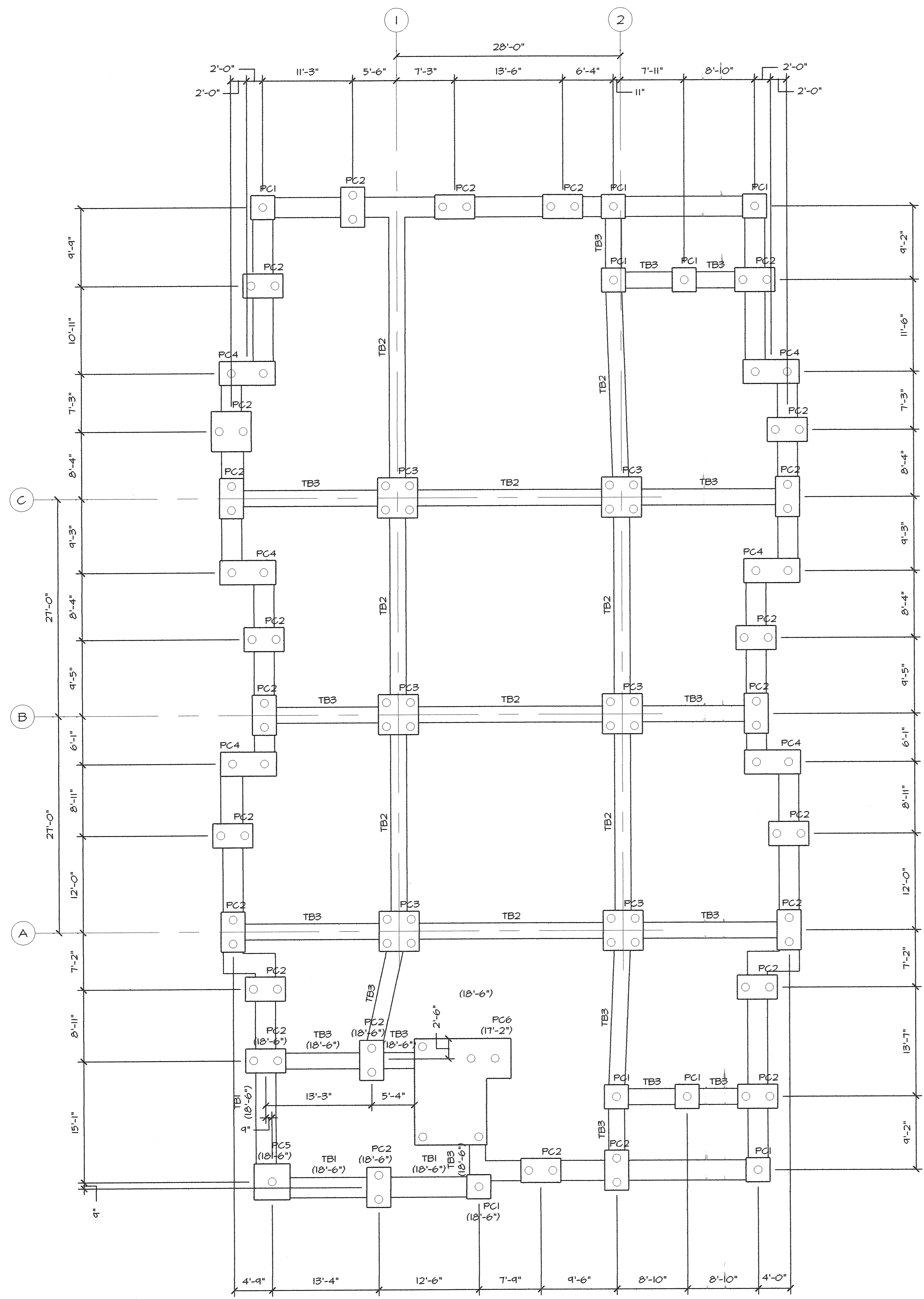
Architect:  
**ARCHETYPE, P.A.**  
 ARCHITECTS  
 48 Union Wharf Portland, Maine 04101  
 (207) 772-6022 Fax (207) 772-4056

Project:  
 VALLEY STREET APARTMENTS  
 GILMAN STREET  
 PORTLAND, MAINE 04102

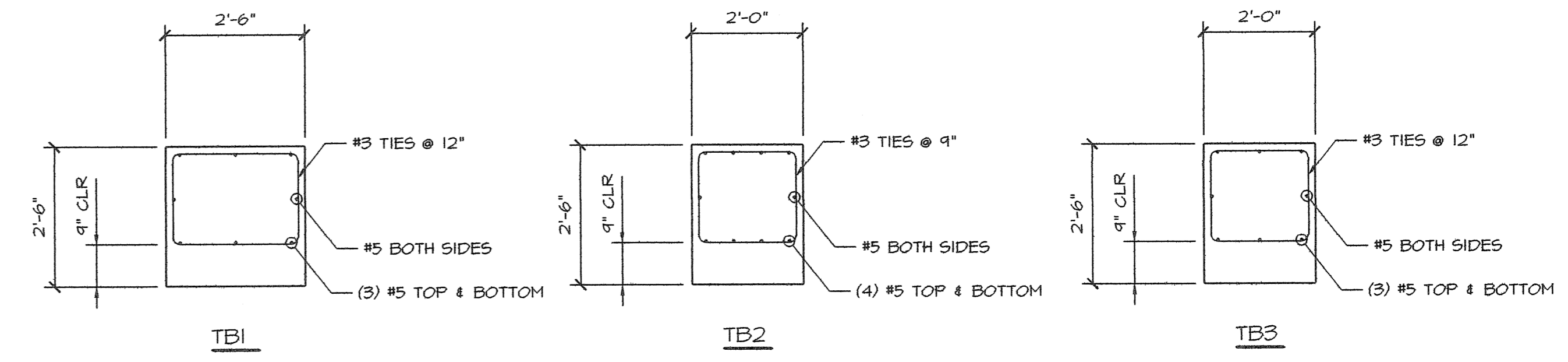
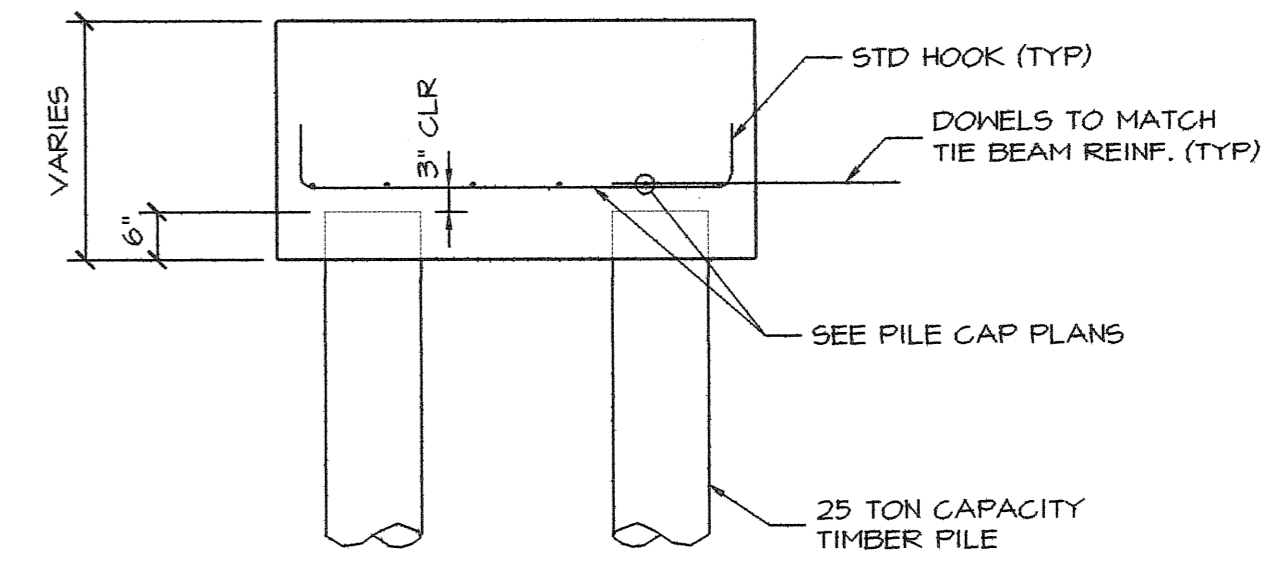
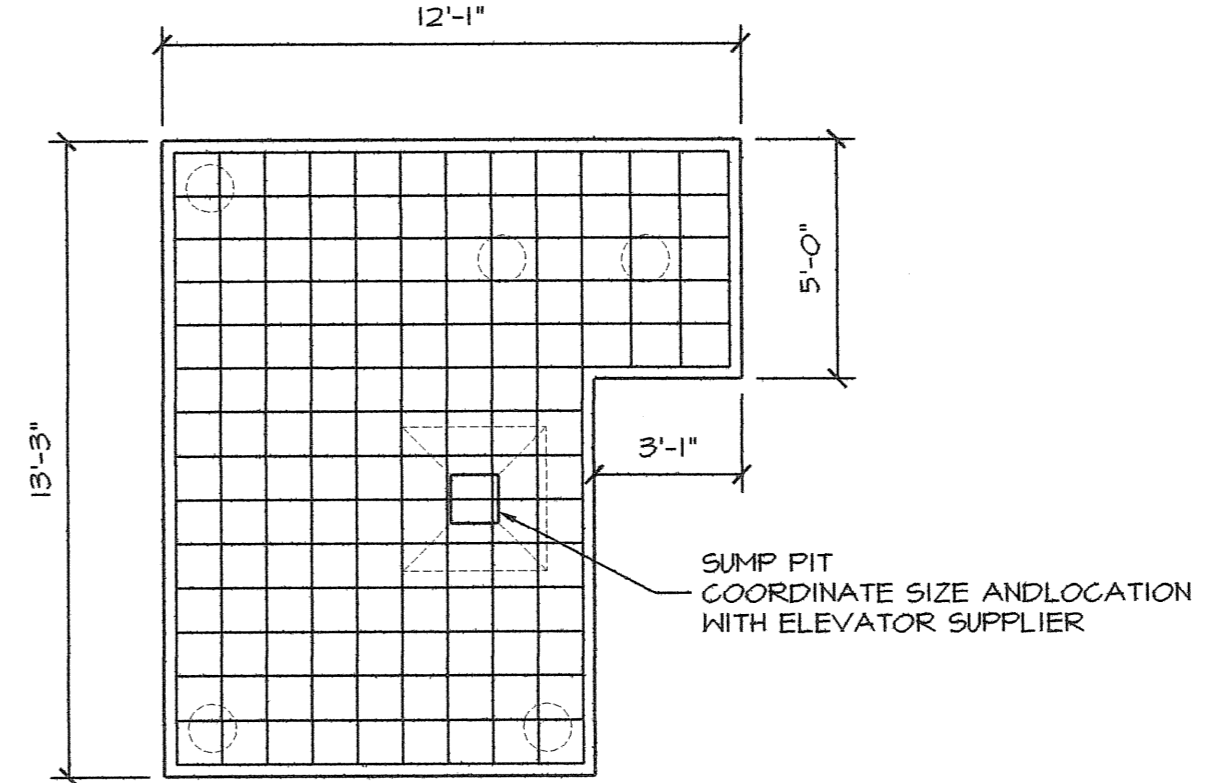
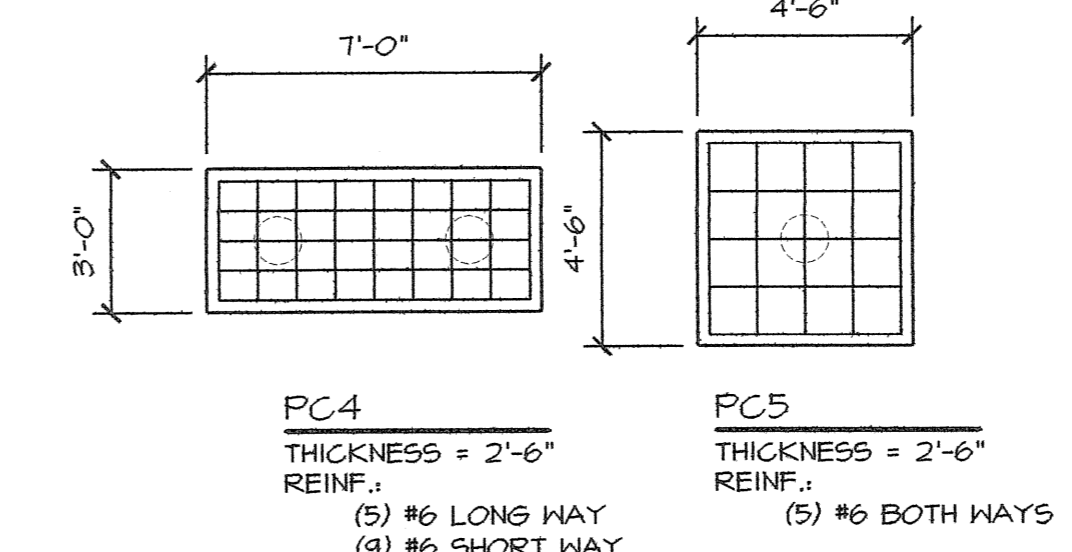
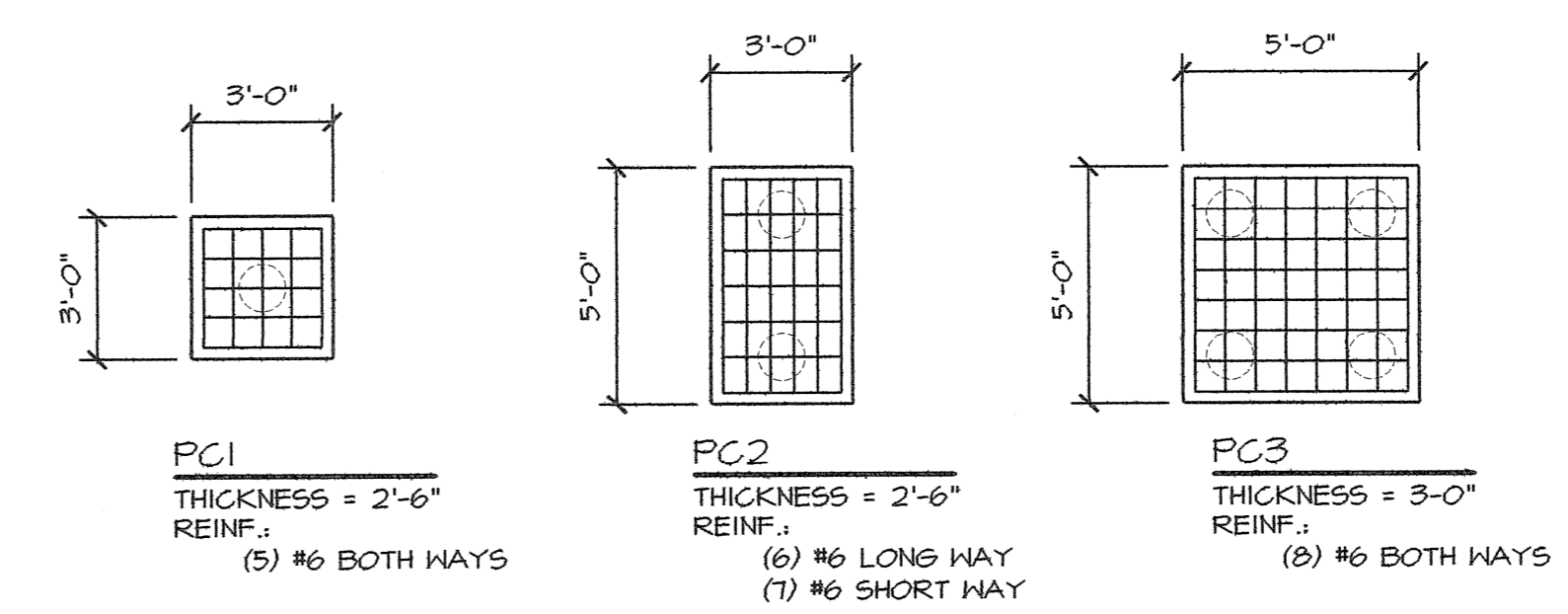
Date: 11/18/05  
 Scale: AS NOTED

Drawing:  
**PILE CAP/TIE BEAM  
 PLAN AND DETAILS**

**S.2**



**PILE CAP/TIE BEAM PLAN**  
 1/8"=1'-0"  
 TOP OF PILE CAP AND TIE BEAM ELEV. = 1'-2" UNLESS NOTED (XX'-X").  
 ALL TIE BEAMS ARE TYPE TB1 UNLESS NOTED.  
 ALL TIE BEAMS ARE CENTERED ON PILE CAPS UNLESS OTHERWISE DIMENSIONED.



**TIE BEAM SECTIONS**  
 1/2"=1'-0"  
 ALL BARS TO HAVE 1 1/2" CLEAR  
 COVER UNLESS NOTED.  
 ALL BARS TO HAVE STANDARD LAP  
 SPLICE TO DONELS AT PILE CAPS.