

**SECOND FLOOR PLAN**  
 SCALE: 1/8"=1'-0"

NOTE:  
 FOR PIPE SIZES OF FEED PIPING TO  
 EQUIPMENT SEE AUTOMATIC CONTROL  
 VALVE SCHEDULE.

REVISIONS:

- 1 01-12-06  
 RECONFIGURE DRYER EXHAUST DUCTWORK IN CHASE AS SHOWN.  
 RELOCATE FIRE DAMPERS TO CHASE WALL(S) WHERE INDICATED.

VALLEY STREET APARTMENTS 5  
 GILMAN STREET  
 PORTLAND, MAINE 04102

PARTIAL SECOND FLOOR PLAN-Ref. Sht. M.3

PROJECT NO: 05-007	SCALE: AS NOTED	DATE: 01-12-06	SHEET NO: MSK-3
-----------------------	--------------------	-------------------	--------------------

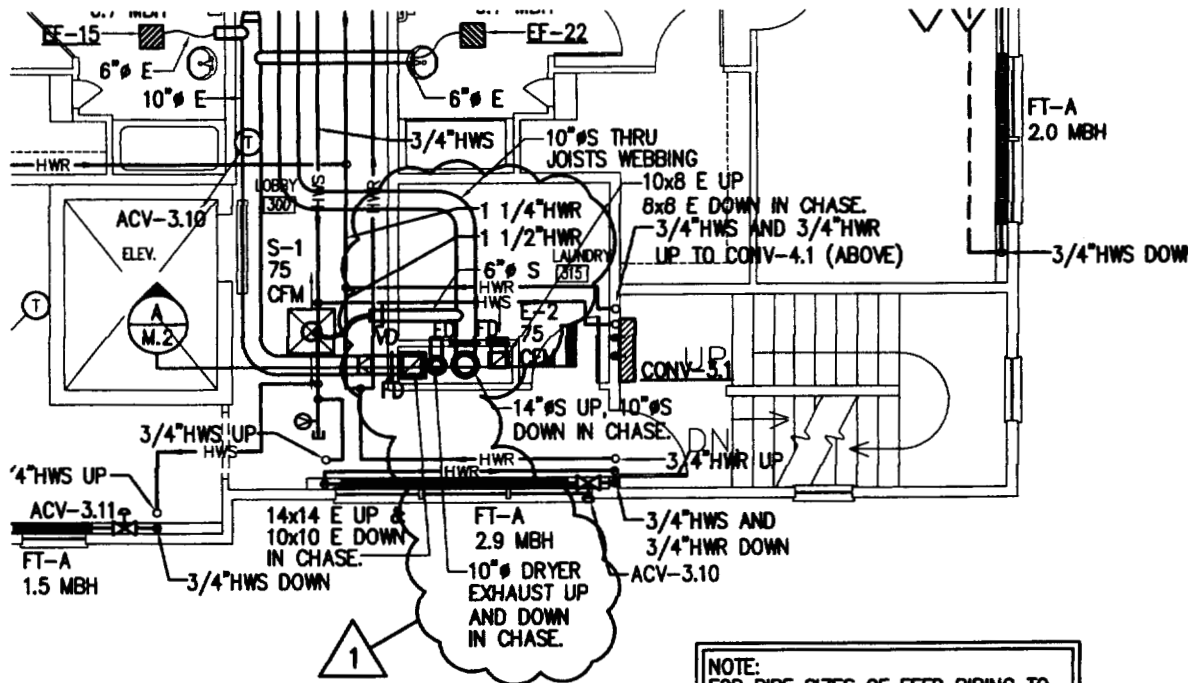


**AWM engineering, inc.**  
 CONSULTING ENGINEERS

Mechanical \* Elect. \* Enviro \* Construction Management

88 State Street Gorham, Maine 04038

Telephone: (207)839-2167 \* E-mail: [stuf@awmeng.com](mailto:stuf@awmeng.com)



### THIRD FLOOR PLAN

SCALE: 1/8" = 1'-0"

NOTE:  
FOR PIPE SIZES OF FEED PIPING TO  
EQUIPMENT SEE AUTOMATIC CONTROL  
VALVE SCHEDULE.

#### REVISIONS:



01-12-06  
RECONFIGURE DRYER EXHAUST DUCTWORK IN CHASE AS SHOW.  
RELOCATE FIRE DAMPERS TO CHASE WALL(S) WHERE INDICATED.

VALLEY STREET APARTMENTS  
GILMAN STREET  
PORTLAND, MAINE 04102

PARTIAL THIRD FLOOR PLAN-Ref. Sht. M.3

PROJECT NO: 5-007	SCALE: AS NOTED	DATE: 01-12-06	SHEET NO: MSK-4
----------------------	--------------------	-------------------	--------------------



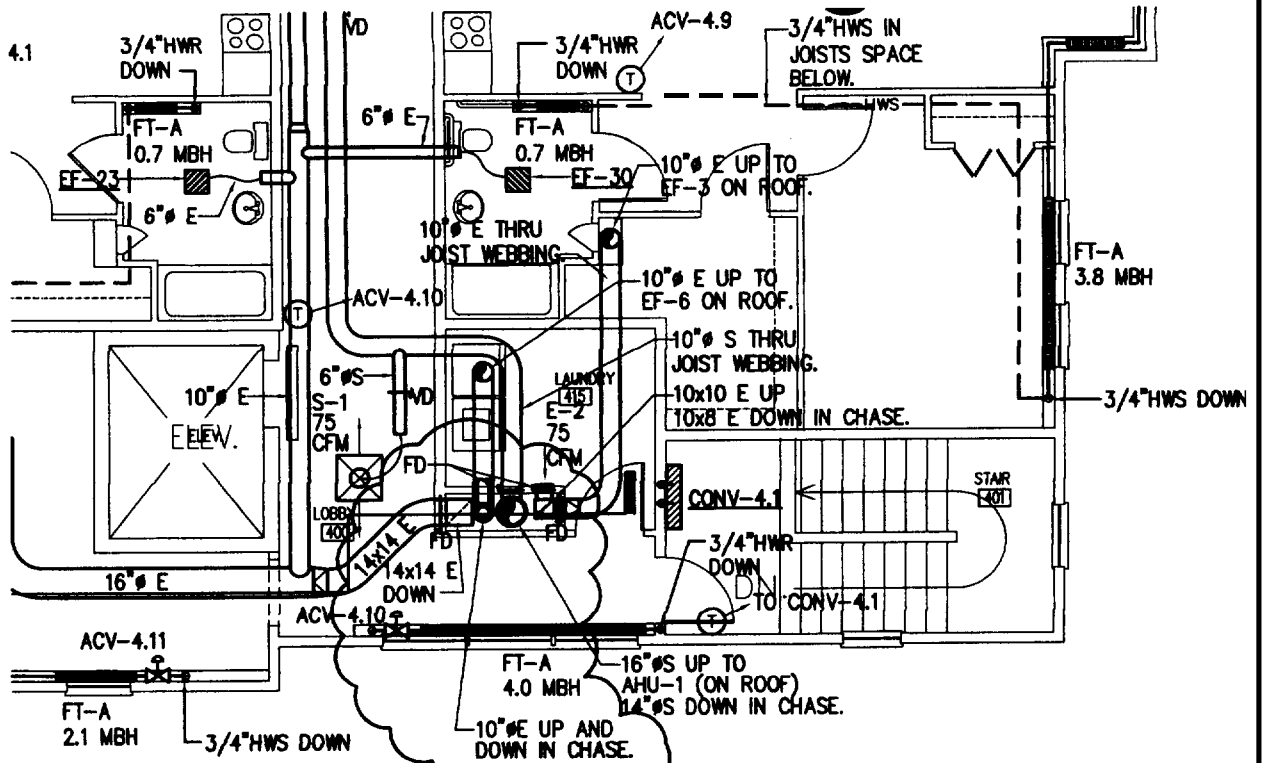
**AWM** *engineering, inc.*

CONSULTING ENGINEERS

Mechanical \* Elect. \* Enviro \* Construction Management

88 State Street Gorham, Maine 04038

Telephone: (207)839-2167 \* E-mail: [stuf@awmeng.com](mailto:stuf@awmeng.com)



NOTE:  
 FOR PIPE SIZES OF FEED PANG TO  
 EQUIPMENT SEE AUTOMATIC CONTROL  
 VALVE SCHEDULE.

1 FOURTH FLOOR PLAN  
 A.3 SCALE: 1/8" = 1'-0"

- REVISIONS:
- 1 01-12-06 RECONFIGURE DRYER EXHAUST DUCTWORK IN CHASE AS SHOWN. RELOCATE FIRE DAMPERS TO CHASE WALL(S) WHERE INDICATED.

VALLEY STREET APARTMENTS  
 GILMAN STREET  
 PORTLAND, MAINE 04 102

PARTIAL FOURTH FLOOR-Ref. Sht. M.4

PROJECT NO: 05-007	SCALE: AS NOTED	DATE: 01-12-06	SHEET N O MSK-5
-----------------------	--------------------	-------------------	--------------------



**AWM engineering, inc.**  
 CONSULTING ENGINEERS  
 Mechanical \* Elect. \* Enviro \* Construction Management  
 88 State Street Gorham, Maine 04038  
 Telephone: (207)839-2167 • E-mail: [stufqlowneng.com](mailto:stufqlowneng.com)