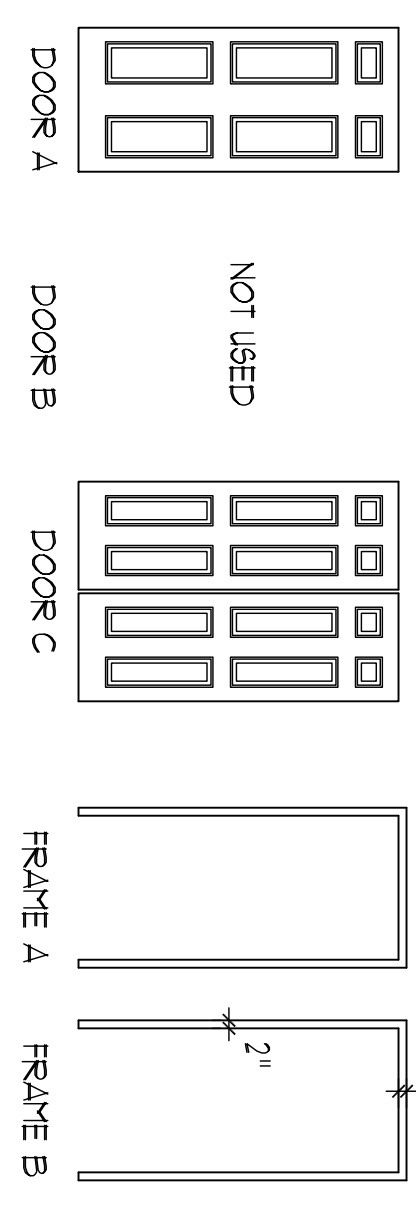


DOOR SCHEDULE

KEY	DOOR			FRAME		FIRE LABEL	HARDWARE FUNCTION	REMARKS
	TYPE	SIZE WxH	MATL	FINISH	TYPE			
1								
2								
3	A	3'-0"X6'-0"	HOLDED	PTD.	B	H41	PTD.	(1) HOUR PASSAGE DINING 116 TO STAIR 101. NOTE 3.
4	A	3'-0"X6'-0"	HOLDED	PTD.	B	H41	PTD.	(1) HOUR STOREROOM CORR 109 TO MECH 102. NOTE 3.
5	C	(2) 2'-6"X6'-0"	HOLDED	PTD.	A	WOOD	PTD.	PASSAGE DINING 116 TO STORAGE 115
6	A	3'-0"X6'-0"	FIBERGLASS	PTD.	A	WOOD	PTD.	ENTRANCE PORCH 100 TO STAIR 101
1	C	(2) 2'-6"X6'-0"	HOLDED	PTD.	A	WOOD	PTD.	CORR 105 FROM CLST 106
8								NOT USED
9	A	3'-0"X6'-0"	HOLDED	PTD.	A	WOOD	PTD.	CORR 109 TO LAUNDRY 109
10								NOT USED
11	A	3'-0"X6'-0"	HOLDED	PTD.	A	WOOD	PTD.	CORR 109 TO HC BATH 110
12	A	3'-0"X6'-0"	HOLDED	PTD.	A	WOOD	PTD.	CORR 109 TO BEDROOM III. NOTE 3.
13	C	(2) 2'-0"X6'-0"	HOLDED	PTD.	A	WOOD	PTD.	BEDROOM III FROM CLST 111a
14								NOT USED
15	A	3'-0"X6'-0"	HOLDED	PTD.	A	WOOD	PTD.	OFFICE 112 FROM CLST 112a
16								NOT USED
17	A	3'-0"X6'-0"	HOLDED	PTD.	A	WOOD	PTD.	CORR 109 TO OFFICE 112
18	A	3'-0"X6'-0"	HOLDED	PTD.	B	H41	PTD.	(1) HOUR PASSAGE CORR 201 TO STAIR 101. NOTE 3.
19	C	(2) 1'-6"X6'-0"	HOLDED	PTD.	A	WOOD	PTD.	BEDROOM 215 TO CLST 216
20								NOT USED
21	A	3'-0"X6'-0"	HOLDED	PTD.	A	WOOD	PTD.	CORR 212 TO BATH 210
22	A	3'-0"X6'-0"	HOLDED	PTD.	A	WOOD	PTD.	CORR 203 TO BATH 209
23	A	2'-0"X6'-0"	HOLDED	PTD.	A	WOOD	PTD.	CORR 203 FROM CLOSET 203a
24	C	(2) 1'-6"X6'-0"	HOLDED	PTD.	A	WOOD	PTD.	BEDROOM 213 FROM CLST 214
25	A	3'-0"X6'-0"	HOLDED	PTD.	A	WOOD	PTD.	CORR 212 TO BEDROOM 213. NOTE 3.
26	C	(2) 1'-6"X6'-0"	HOLDED	PTD.	A	WOOD	PTD.	BEDROOM 211 FROM CLST 208
27	C	(2) 1'-6"X6'-0"	HOLDED	PTD.	A	WOOD	PTD.	BEDROOM 206 FROM CLST 201
28	A	3'-0"X6'-0"	HOLDED	PTD.	A	WOOD	PTD.	CORR 212 TO BEDROOM 211. NOTE 3.
29	A	3'-0"X6'-0"	HOLDED	PTD.	A	WOOD	PTD.	CORR 203 TO BEDROOM 206. NOTE 3.
30	C	(2) 2'-6"X6'-0"	HOLDED	PTD.	A	WOOD	PTD.	BEDROOM 204 FROM CLST 205
31	A	3'-0"X6'-0"	HOLDED	PTD.	A	WOOD	PTD.	CORR 203 TO BEDROOM 204. NOTE 3.
32	A	3'-0"X6'-0"	HOLDED	PTD.	A	WOOD	PTD.	CORR 201 TO BEDROOM 215. NOTE 3.
33	...	3'-0"X2'-0"	WOOD	PTD.	..	WOOD	PTD.	CORR 201 TO ATTIC

GENERAL DOOR NOTES:
 A. CONTRACTOR TO FIELD VERIFY ALL DOORFRAME DIMENSIONS PRIOR TO SUBMITTALS TO ARCHITECT.
 B. HANDRAILS TO INCLUDE ADA APPROVED LEVER HANDLES.
 C. PROVIDE WEATHERSTRIPPING AT EXTERIOR DOOR.
 D. PROVIDE CLOSERS AT RATED DOORS.

DOOR NOTES:
 1. NOT USED.
 2. NOT USED.
 3. FIRE DOOR CONSTRUCTION SHALL MEET REQUIREMENTS FOR SMOKE AND DRAFT FEE UL1194 (INCLUDING, BUT NOT LIMITED TO ARTIFICIAL BOTTOM SEAL).



FINISH SCHEDULE

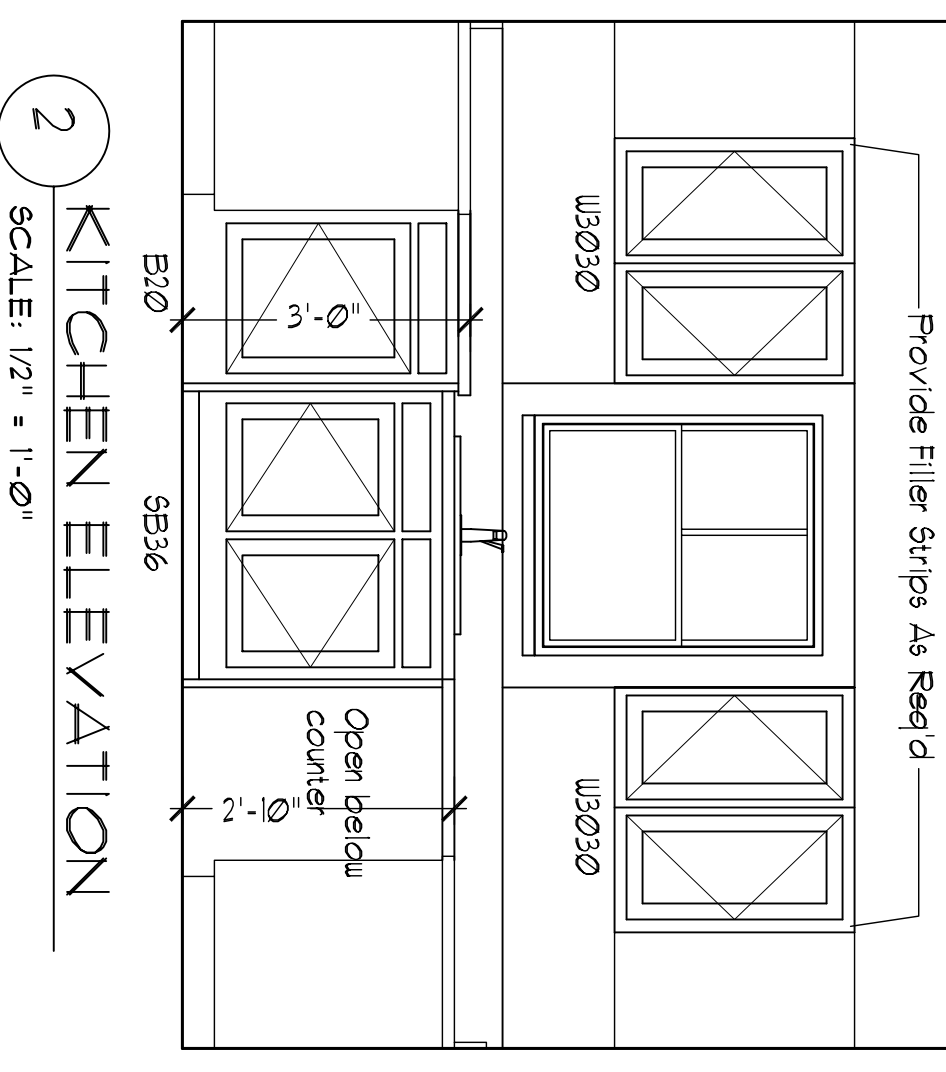
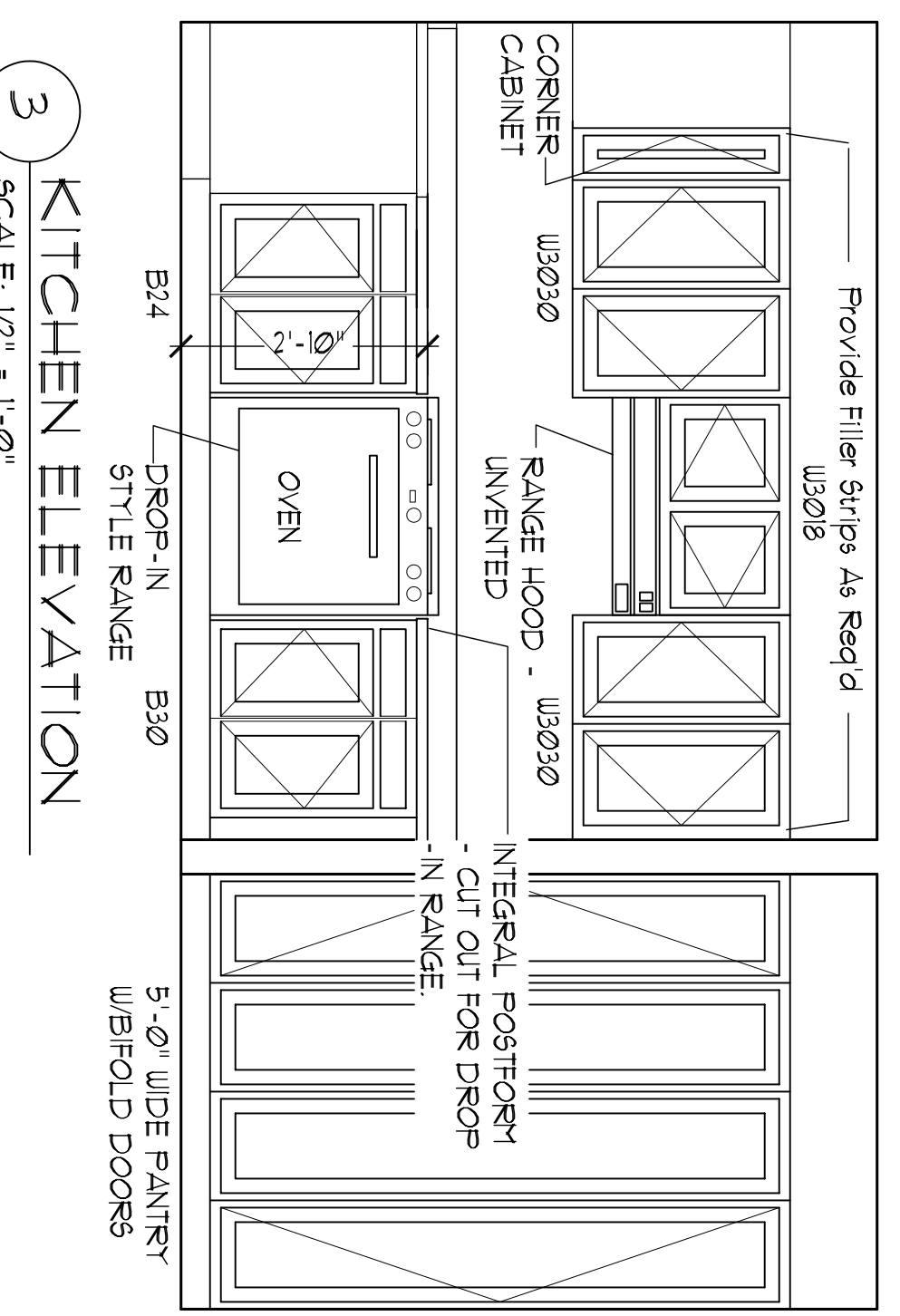
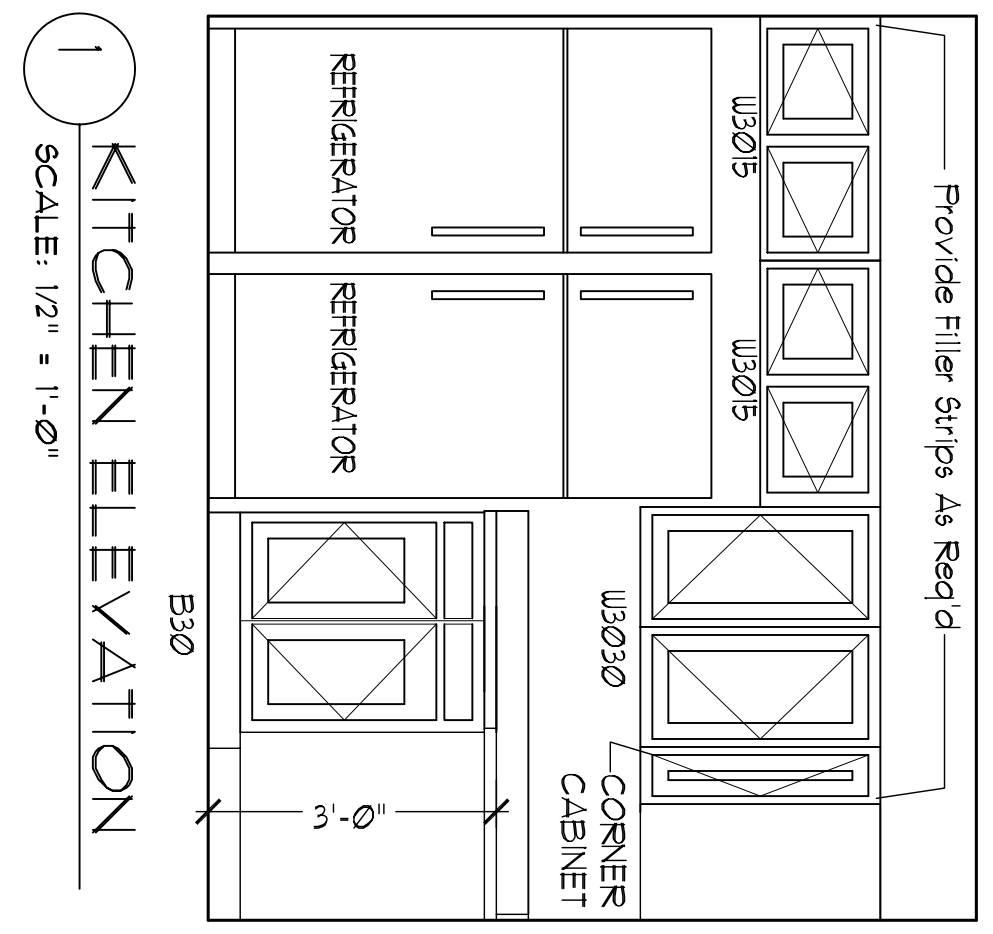
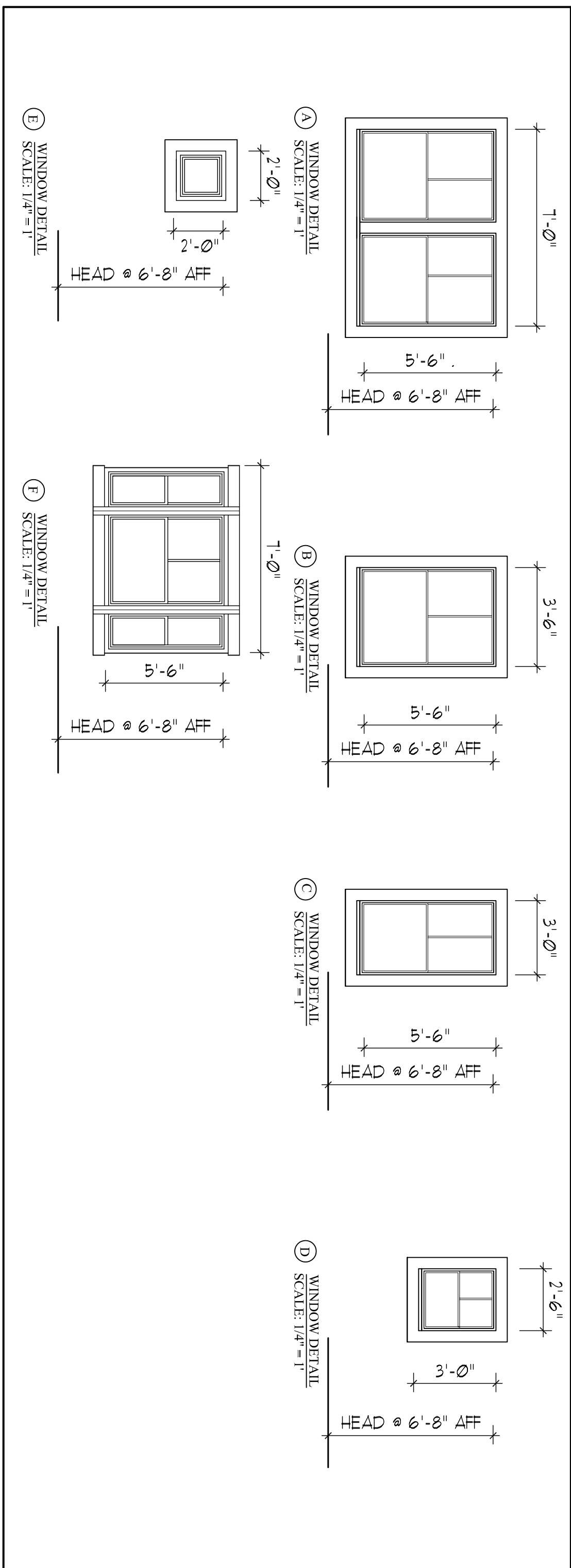
KEY	FLOORING		WALL		PAINTING NOTES: 1. INTERIOR WALLS, CEILINGS & TRIM TO RECEIVE (1) COAT PRIMER, (2) COATS 2. EXTERIOR FRONT PORCH, EXTERIOR DOORS AND OTHER EXTERIOR WOOD AND METAL ITEMS TO BE PAINTED ARE TO RECEIVE (1) COAT PRIMER, (2) COATS FINISH. A. STAIR 101. WALK-OFF MAT @ EXTERIOR ENTRY, CARPET STAIRS AND LANDINGS. ENGLISH KEY
	KEY	WALL	KEY	WALL	
F1	SHEET VINYL	W1	5/8" GYP BD - PTD.		FLOOR MATL. _____ BASE MATL./FIN. WALL MATL./FIN. _____ CLG. MATL./FIN.
F2	SEALED CONCRETE		BASE		
F3	CARPET	B1	3/12" WOOD BASE - PTD.		
F4	WALK-OFF MAT		CEILING 5/8" GYP BD - PTD. BEADBOARDED - PTD.		

WINDOW SCHEDULE

KEY	MANUFACTURER	MODEL	TYPE	REMARKS
A	PARADIGM	STANDARD DOUBLE HUNG	VNLT DOUBLE HUNG	NOTE A.
B	PARADIGM	STANDARD DOUBLE HUNG	VNLT DOUBLE HUNG	NOTE A.
C	PARADIGM	STANDARD DOUBLE HUNG	VNLT DOUBLE HUNG	
D	PARADIGM	STANDARD DOUBLE HUNG	VNLT DOUBLE HUNG	
E	PARADIGM	FIXED CASERMENT	VNLT FIXED CASERMENT	
E	ANDERSEN	30" DH W/1'-0" FLANKING UNITS	VNLT CLAD DOUBLE HUNG	NOTE B.

GENERAL WINDOW NOTE:
 1. ALL WINDOWS TO BE NFRC RATED AND HAVE U VALUE OF LESS THAN 0.35, SHGC OF 0.45 OR HIGHER, AIR LEAKAGE RATE OF 0.30 OR LESS.
 2. COLOR SELECTED BY ARCHITECT FROM MANUFACTURER'S STANDARD COLORS.
 3. FULL SCREENS ON OPERABLE WINDOWS.
 4. VERIFY WINDOW DIMENSIONS, WINDOW SUBMITTALS REQUIRED.

WINDOW TYPES



KITCHEN FIXTURES:
 1. KITCHEN SINK BARRIER FREE - ELKAY LUSTERTONE 1" RAD-2522-60-4, 25" x 22", 18 GAGE TYPE 302 SS, SEAMLESSLY DRAWN, SELF RIMMING, SOUND DEADENING UNDERSIDE, SINGLE 2 1/2" x 15 3/4" x 6" DEEP COMPARTMENT, FOUR FAUCET HOLES, ADA COMPLIANT.
 2. FAUCET - STYMONS SYMNETRIX 45-248-2, 8" CENTER DECK MOUNT, ADA COMPLIANT.
 3. HOGUIRE #91 STRAINER.
 4. HOGUIRE #265 1/2" ANGEL SUPPLIED WITH WHEEL HANDLE STOPS.
 5. HOGUIRE #009 5/16" VELP-TRAP WITH CLEANOUT AND BRASS NIPPLE W/CASET ESCUTHEON. ALL CHROME PLATED.
 6. TREBSO PIPE WRAP ON SUPPLIES, TRAP AND WASTE.

LAUNDRY FIXTURES:
 1. CLOTHES WASHER HOOKUP - STYMONS LAUNDRY MATE W-602-X SUPPLY AND DRAIN FITURE.
 WALL HYDRANT:
 1. WOODFORD #B6C AUTOMATIC DRAINING, FREEZELESS BOX TYPE WALL HYDRANT. ASSE STANDARD 109 APPROVED.

SCHEDULES, DETAILS

Date: 01/04/06
 Scale: AS NOTED

Project:
 THE SHALOM HOUSE at
 GILLMAN STREET
 PORTLAND, ME

ARCHETYPE, P.A.
 ARCHITECTS
 48 Union Wharf Portland, Maine 04101
 (207) 772-6022 Fax (207) 772-4056

OWNER:
 SHALOM HOUSE, INC.
 POST OFFICE BOX 560
 PORTLAND, ME 04112

A-5.0