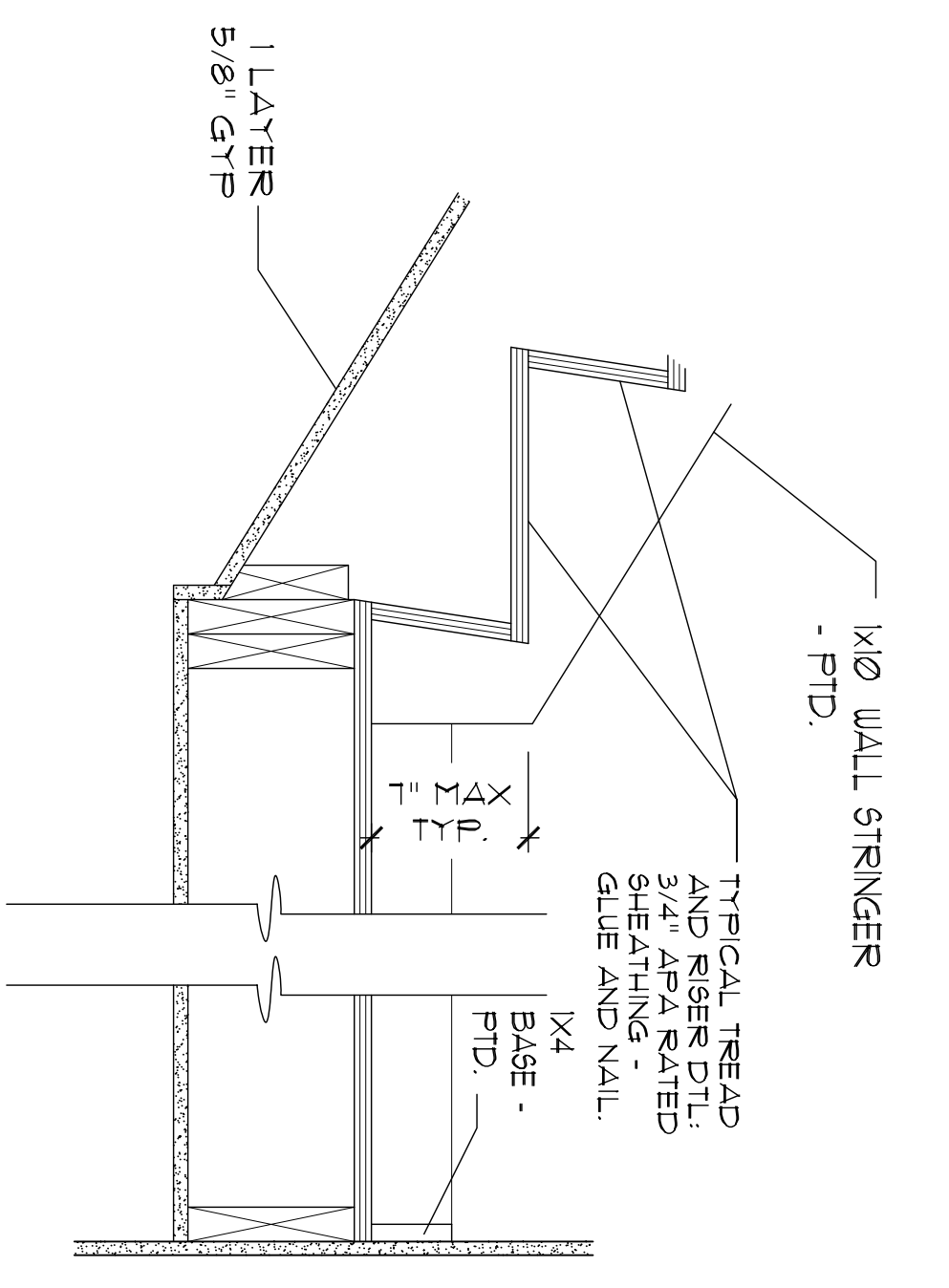
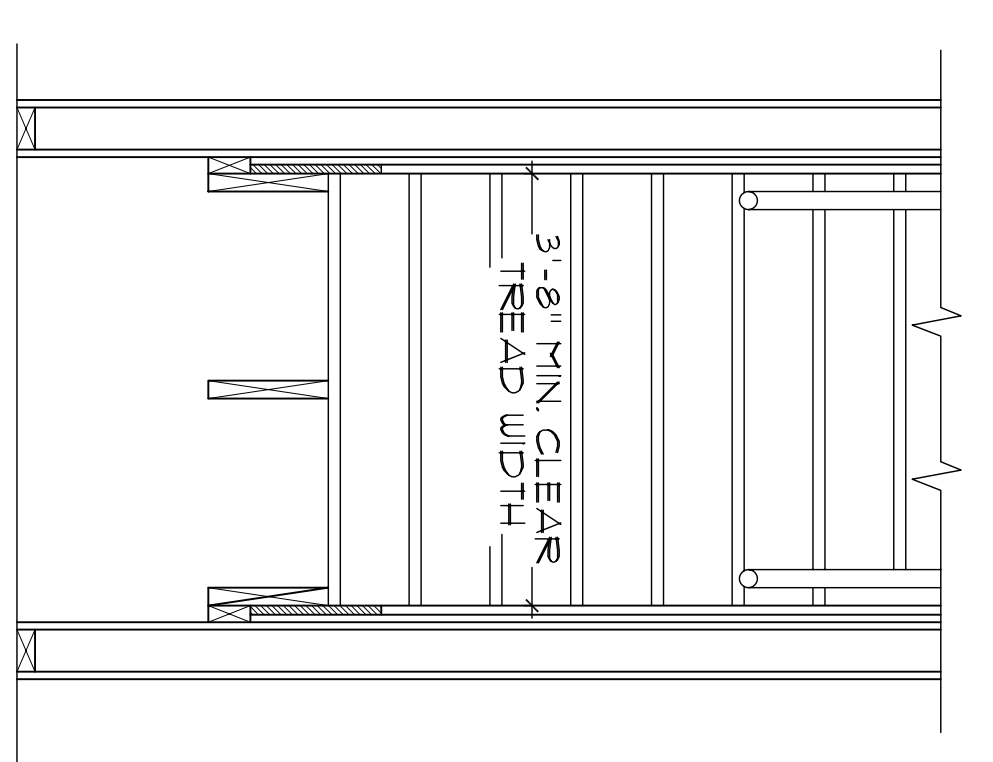
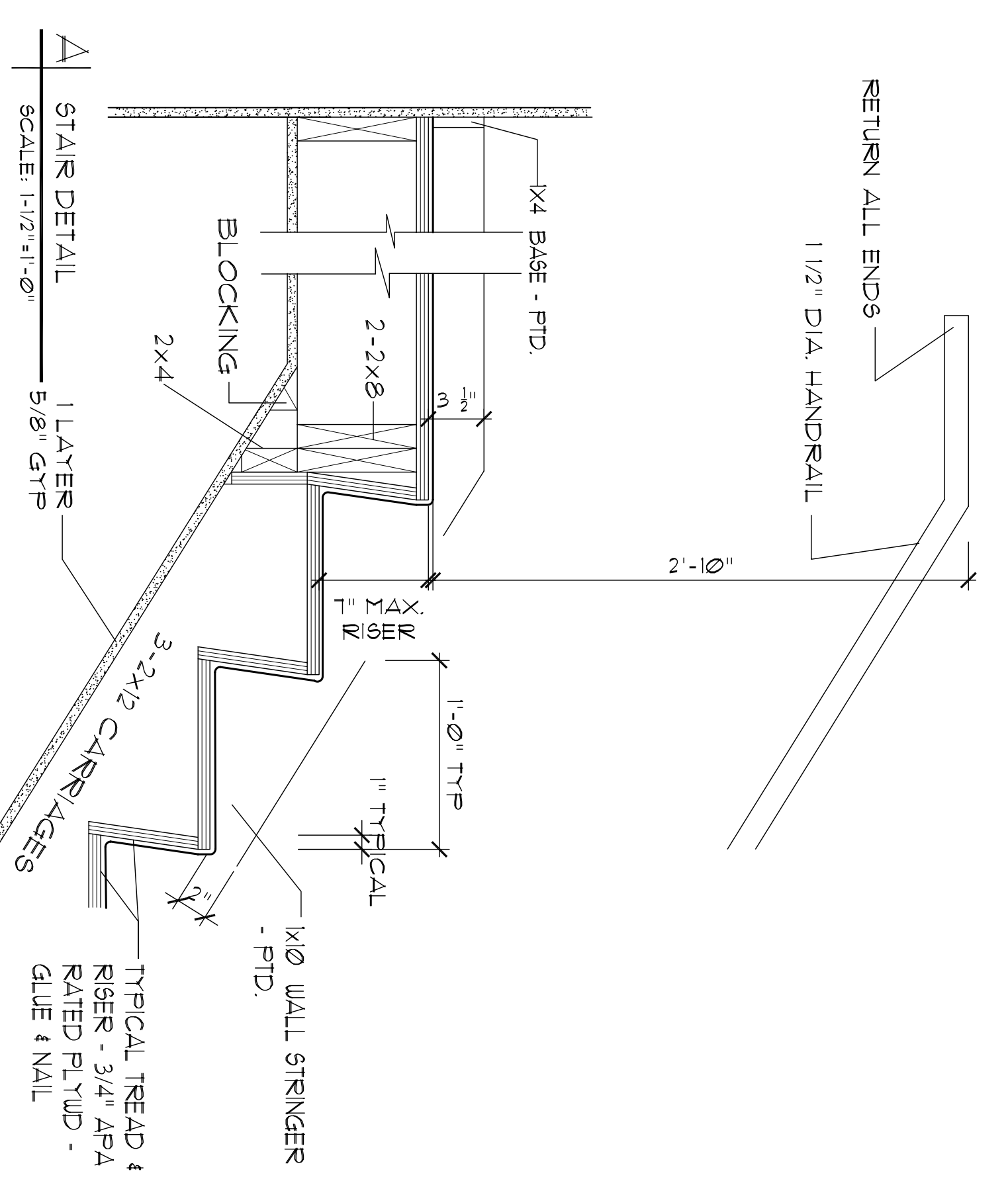


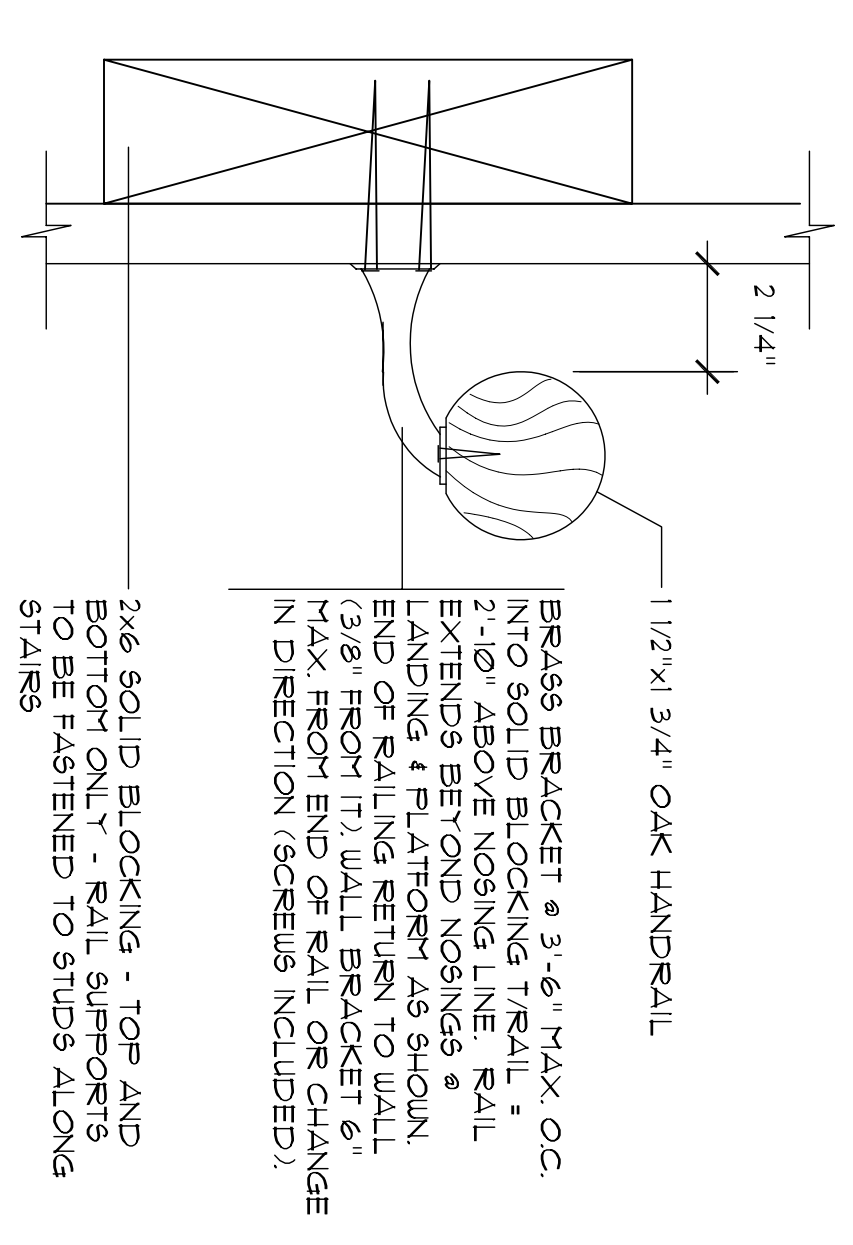
2 STAIR 101 - SECTION
SCALE: 1/2" = 1'-0"



B STAIR DETAIL
SCALE: 1-1/2" = 1'-0"



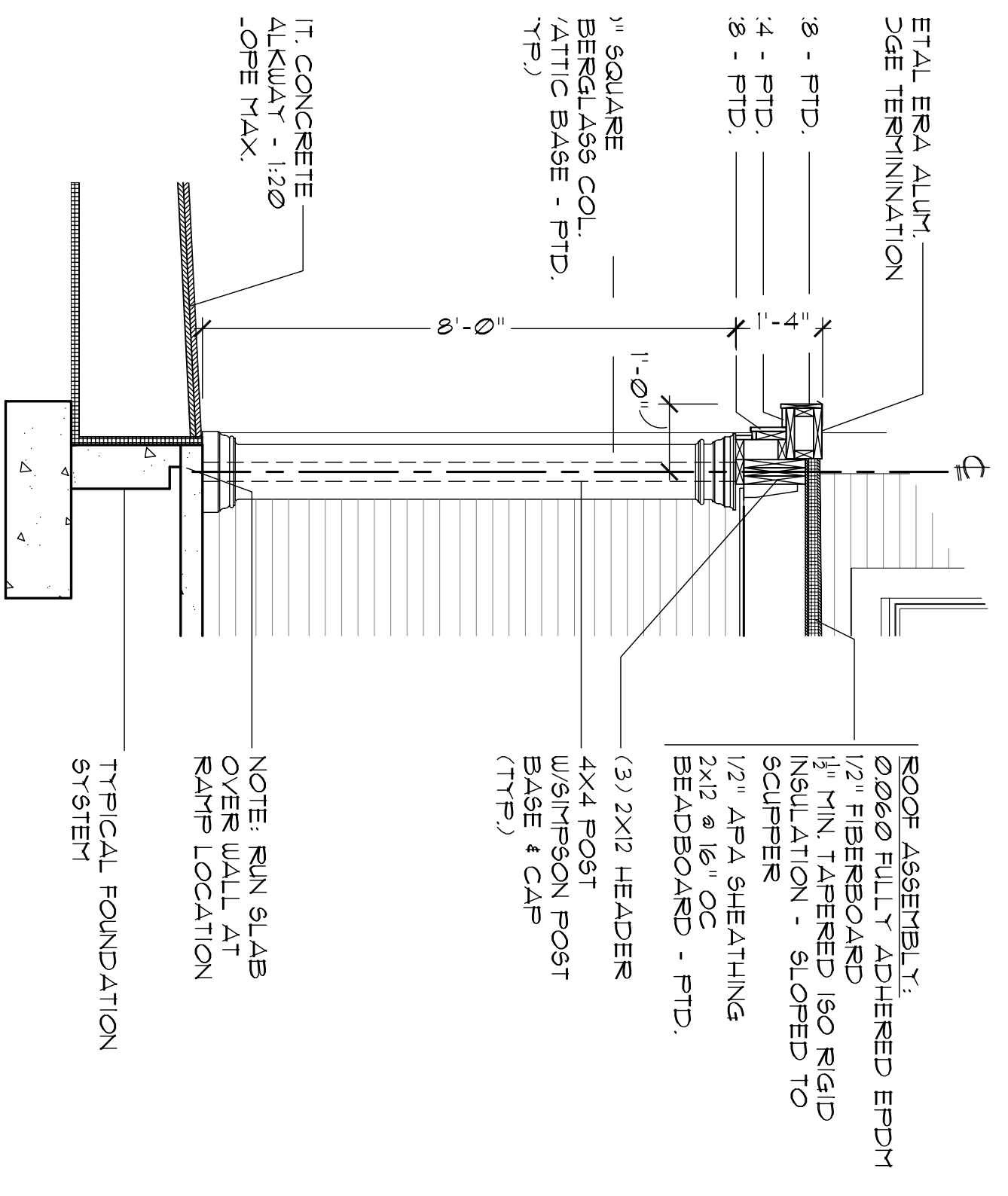
A STAIR DETAIL
SCALE: 1-1/2" = 1'-0"



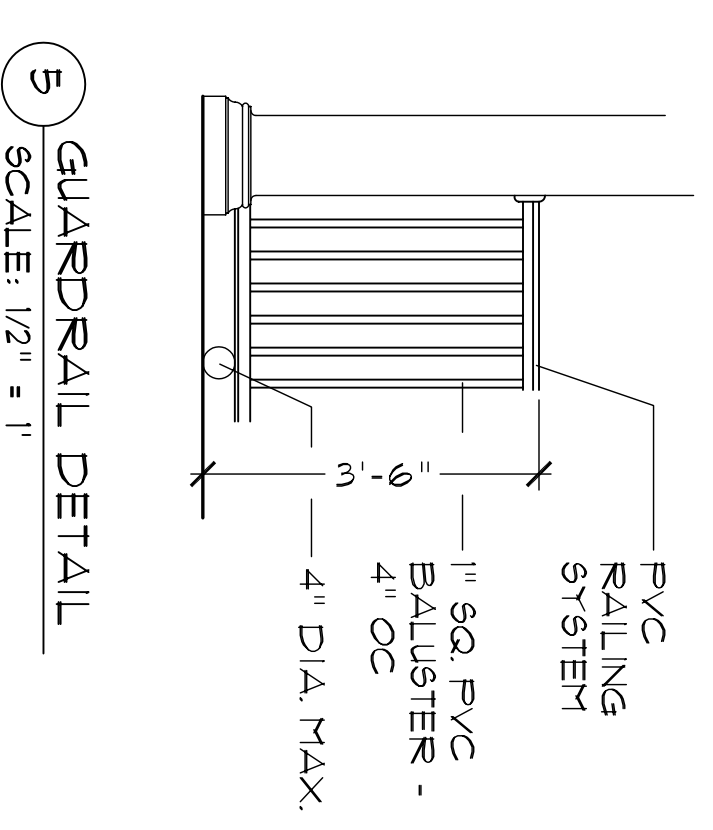
D STAIR HANDRAIL DETAIL
SCALE: 3/4" = 1'-0"

1 STAIR 101 - DETAILS
SCALE: AS NOTED

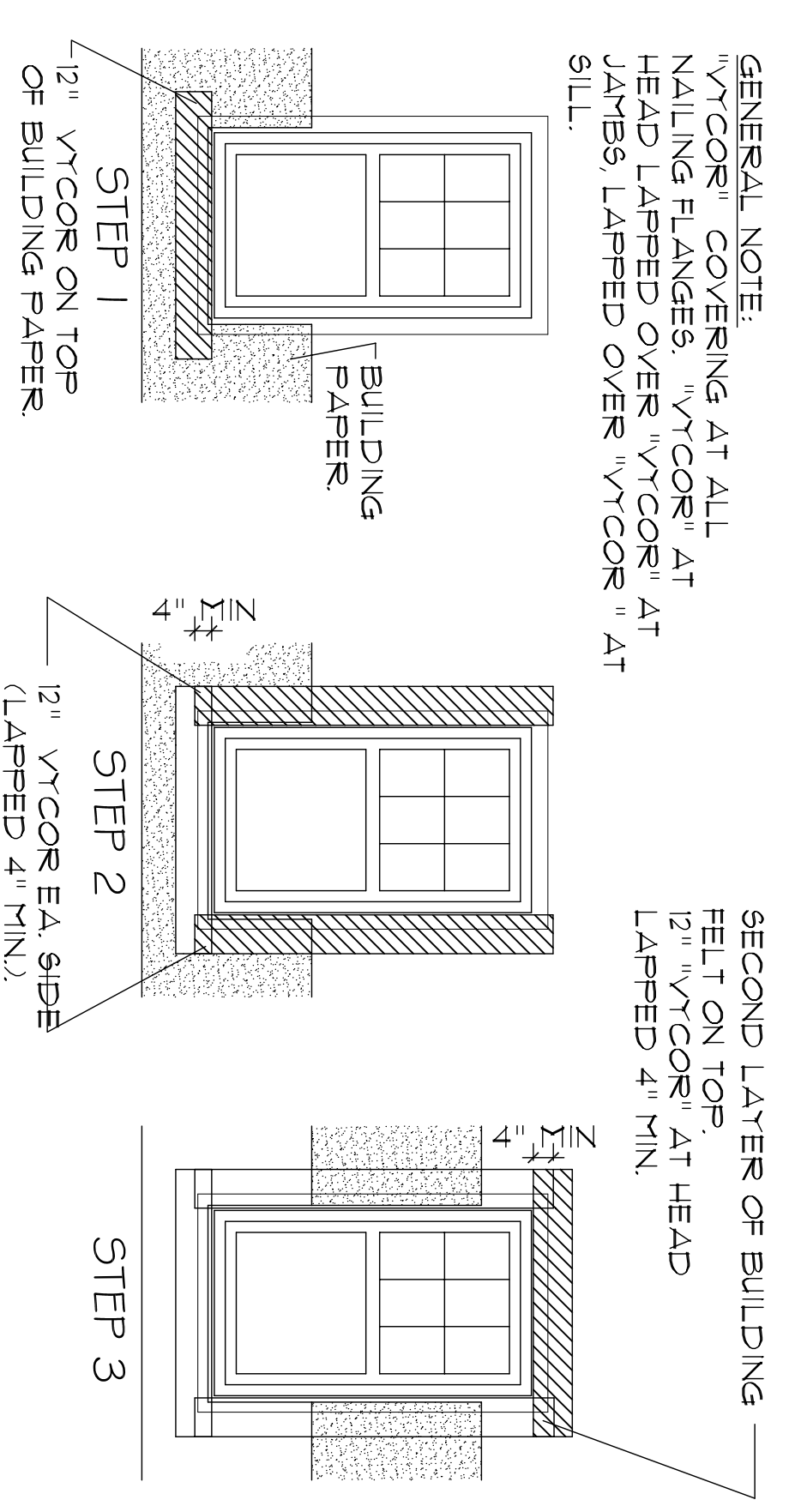
STAIR NOTE: STAIR 100 - 17 EQUAL RISERS. RISER NOT TO EXCEED 7".



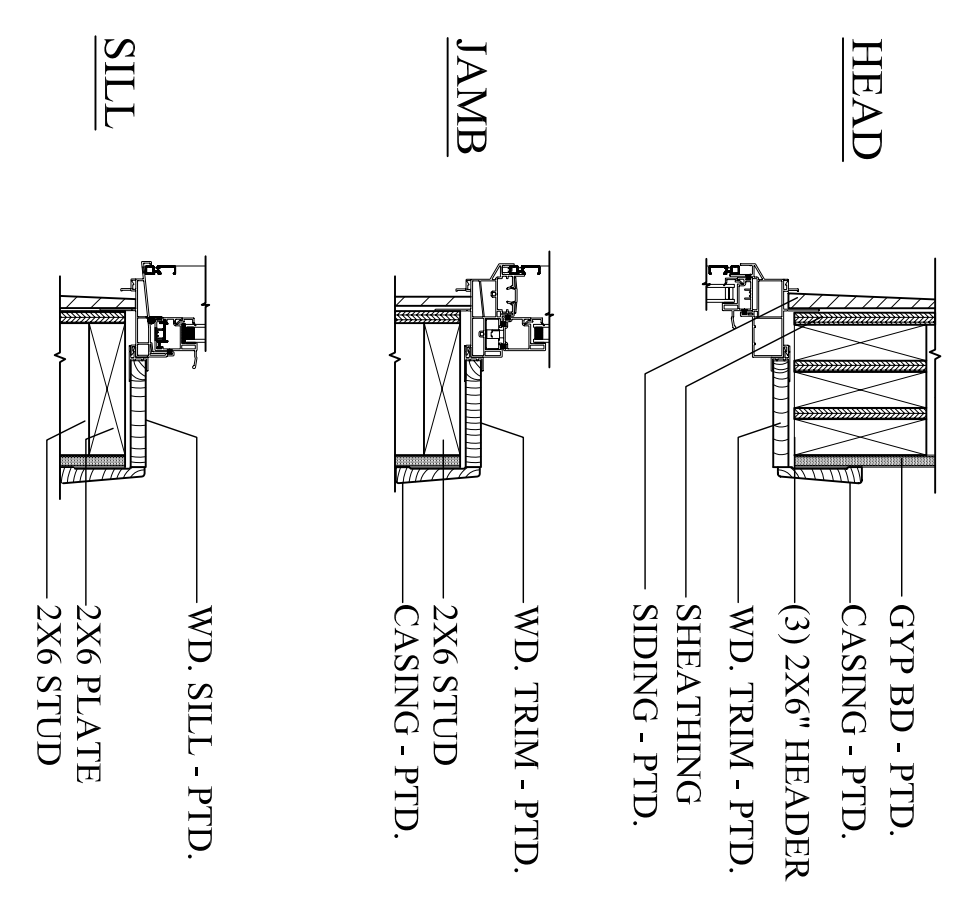
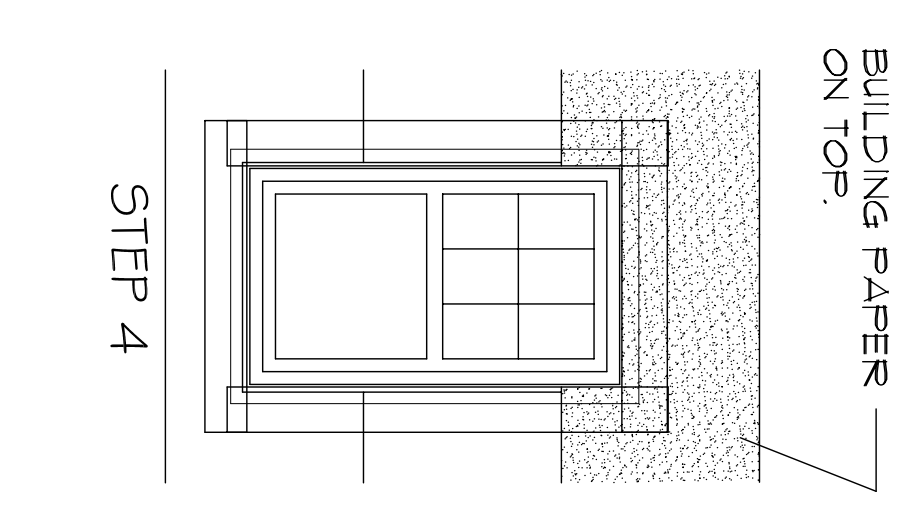
6 SECTION @ PORCH
SCALE: 1/2" = 1'



5 GUARDRAIL DETAIL
SCALE: 1/2" = 1'



4 WINDOW INSTALLATION DETAIL
SCALE: 1/4" = 1'



3 D.H. JAMB DETAIL
SCALE: 1/2" = 1'

DETAILS

Date: 01/04/06
Scale: AS NOTED

Project:
THE SHALOM HOUSE at
GILLMAN STREET
PORTLAND, ME

ARCHETYPE, P.A.
ARCHITECTS
48 Union Wharf Portland, Maine 04101
(207) 772-6022 Fax (207) 772-4056

OWNER:
SHALOM HOUSE, INC.
POST OFFICE BOX 560
PORTLAND, ME 04112