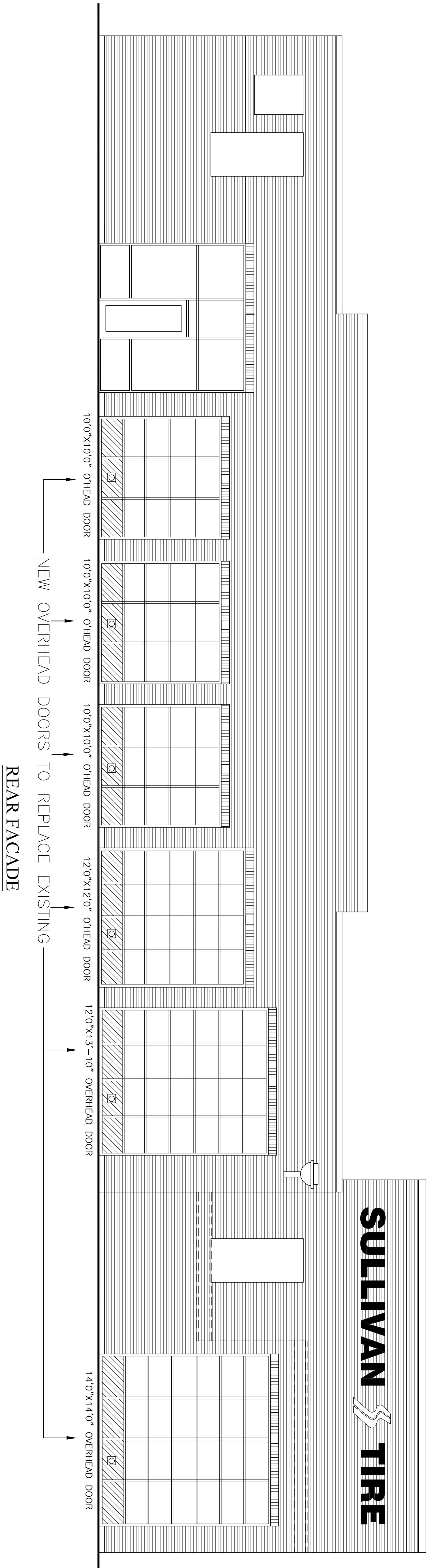


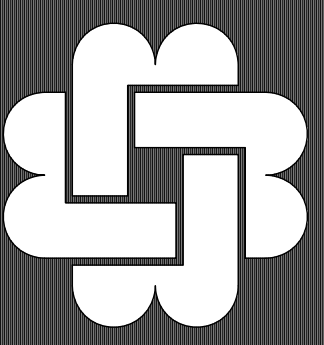
OVERHEAD DOOR & POWER OPERATOR SPEC.  
 MANUFACTURE & INSTALLATION PER R.G. TOMBS DOOR CO. INC.  
 PHONE: 603-668-2003. EMAIL: RICH@TOMBSDOOR.COM  
 FULL TUBULAR EXTRUDED ALUMINUM CONSTRUCTION ALLOY (ALCAN 508-T6)  
 ALUMINUM PANELS TO BE .040 GA. HERMETICALLY SEALED IN MOLDED VINYL GASKETS  
 IN A 3/8" DEEP GROOVE IN THE STILES AND RAJLS AND RETAINED ON THE INSIDE FACE  
 BY WEATHERSTRIPPING. BOTTOM RAJLS SUPPLIED WITH A FLEXIBLE ROLLED ASTRAGAL TO  
 PROVIDE A SEAL BETWEEN THE DOOR AND FLOOR. DOORS TO ACCOMMODATE EXISTING  
 FRAMED OPENING.  
 HARDWARE MODEL # 3-9.  
 POWER OPERATOR: MODEL PRO-TB TROLLEY OPERATOR W/  
 BRAKE AS MANUFACTURED BY MCGANN SYSTEMS, INC. POWER  
 RATED AS APPROPRIATE FOR DOORS SHOWN ON DRAWINGS.  
 TRACK: 2" MODEL 2-OS. GALVANIZED STEEL. TRACKS ARE MOUNTED FOR PT WOOD  
 BLOCKING. SIDE LOCK.  
 1/8" DSB CLEAR GLASS. INCLUDE FINISHED ALUMINUM PANELS AS SHOWN W/ EXHAUST  
 PORT.

LEFT SIDE ELEVATION FACING ABUTTING BUILDING

RIGHT SIDE ELEVATION



REAR FACADE



**JOHN T. BRENNAN & ASSOCIATES ARCHITECTS**  
 85 STILES ROAD, SUITE 203, PO BOX 21, SALEM, NH, 03079  
 PHONE: 603-893-4693 FAX: 603-893-4693

PROPOSED FACADE RENOVATION

DATE: FEBRUARY 6, 2008  
 SCALE: 3/16"=1'0"

BUILDING RENOVATION  
**SULLIVAN TIRE**  
 RETAIL CENTER  
 ST JOHN STREET, PORTLAND, MAINE

A2