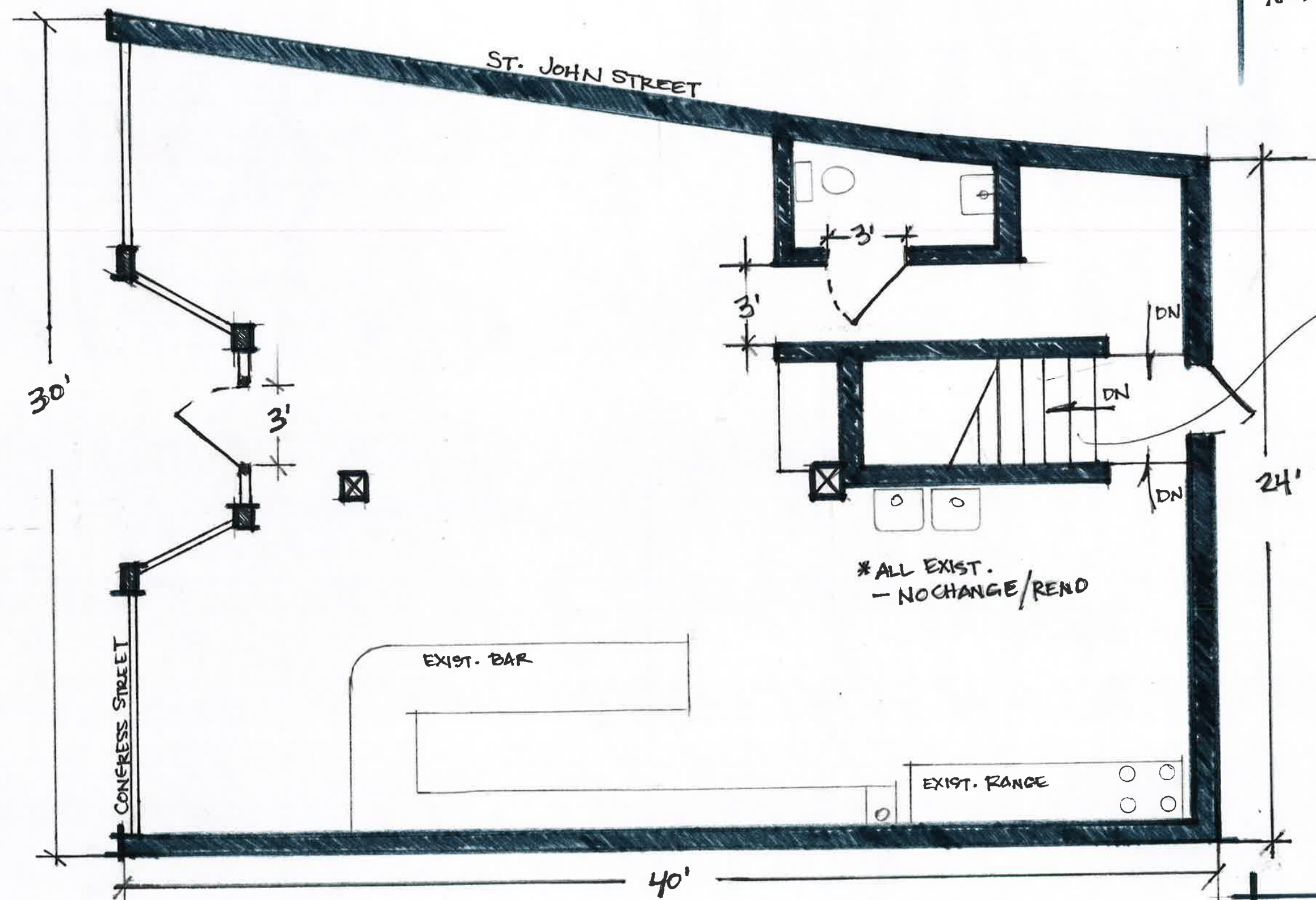


NOT FOR CONSTRUCTION

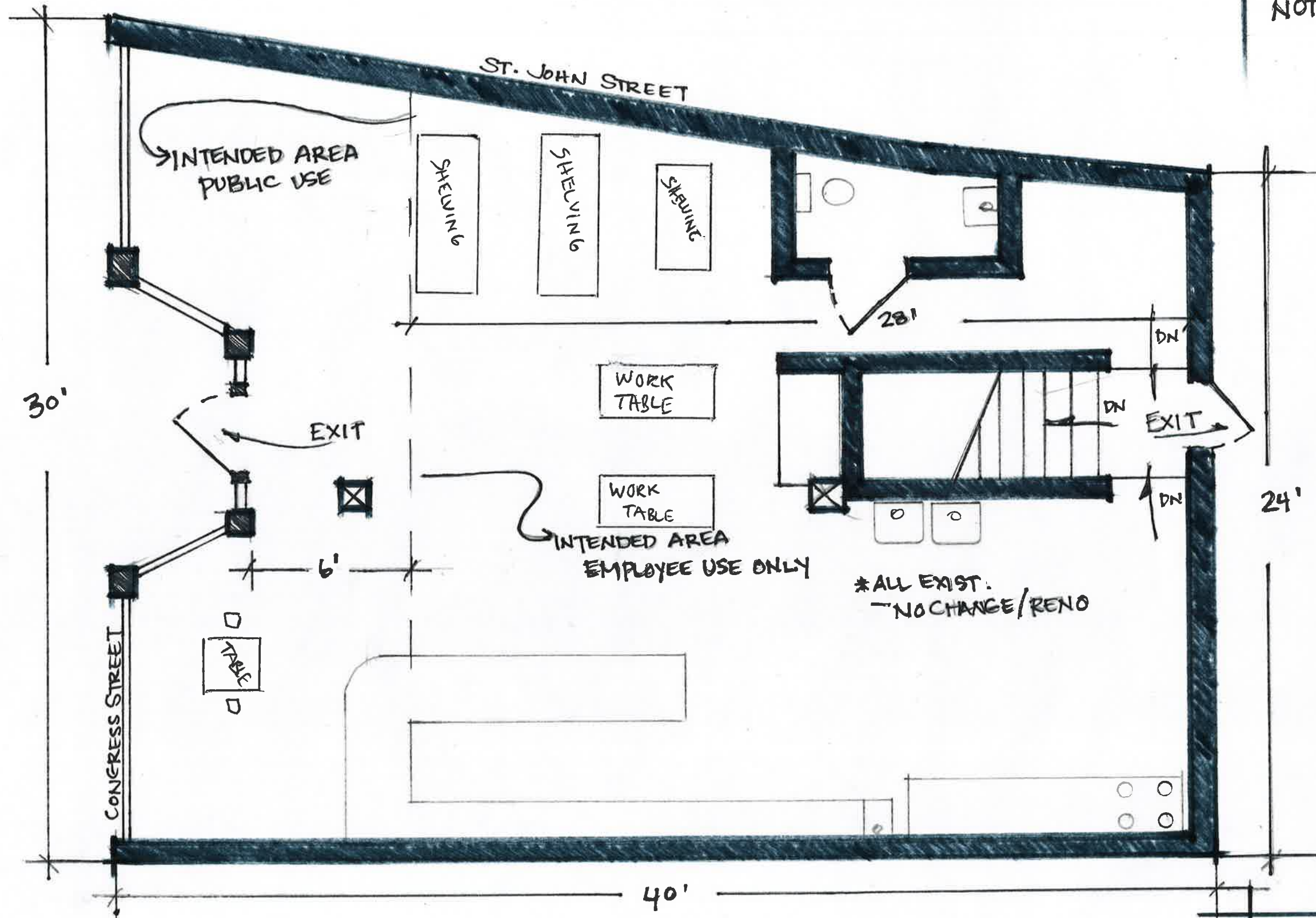


\* ALL EXIST.  
- NO CHANGE/RENO

7/11 RISE/RUN  
12 STEPS

953 CONGRESS ST.  
FLOOR PLAN (EXIST.)  
1/4" = 1'-0" 1070

NOT FOR CONSTRUCTION



\*ALL EXIST.  
NO CHANGE/RENO

953 CONGRESS ST.  
EGRESS/INTENDED USE  
1/4" = 1'-0" 1070

