

◆ 995 CONGRESS STREET ◆

PORTLAND, MAINE

09-01-2005

GENERAL NOTES

1. ALL WORK SHALL CONFORM TO LOCAL, FEDERAL AND STATE LAWS, ORDINANCES AND PREVAILING EDITIONS OF ADOPTED BUILDING CODES. IT IS THE CONTRACTOR'S RESPONSIBILITY TO SECURE ALL PERMITS FOR THE WORK.
2. THE CONTRACTOR SHALL VERIFY ALL CONDITIONS AND DIMENSIONS PRIOR TO COMMENCING THE WORK AND REPORT ANY DISCREPANCIES TO THE ARCHITECT. THE CONTRACTOR SHALL PROCEED WITH THE WORK ONLY AFTER SUCH DISCREPANCIES HAVE BEEN RESOLVED BY THE ARCHITECT. THE CONTRACTOR SHALL ALLOW A 48-HOUR TIME FRAME FOR RESOLVING DISCREPANCIES ONCE THE ARCHITECT HAS ACKNOWLEDGED THE CONDITION.
3. CONTRACTOR SHALL REVIEW AND VERIFY ALL EXISTING CONDITIONS PRIOR TO STARTING THE WORK IN ANY GIVEN AREA.
4. WORK WITH GIVEN DIMENSIONS AND LARGE SCALE DETAILS, DO NOT SCALE THE DRAWINGS AS THE REPRODUCTIVE PROCESS TENDS TO DISTORT THE ACCURACY OF THE GRAPHIC SCALE INDICATED.
5. ALL ACTIVITIES SHALL BE PERFORMED IN A NEAT, SAFE, AND CLEAN MANNER. ALL CONSTRUCTION WASTE SHALL BE REMOVED FROM THE BUILDING. SITE BURNING IS NOT ALLOWED. LEAVE WORK AREA IN A CLEAN, SAFE CONDITION AT THE END OF EACH WORK DAY.
6. ALL DEBRIS SHALL BE DISPOSED OF AT AN APPROVED OFF-SITE FACILITY IN COMPLIANCE WITH ALL REGULATIONS.
7. ALL WOOD IN CONTACT WITH MASONRY OR CONCRETE SHALL BE PRESURE PRESERVATIVE TREATED.
8. ALL CEILINGS SHALL BE LEVEL TO A TOLERANCE OF 1/8" IN A 20'-0" RADIUS WHEN CHECKED WITH A 10'-0" STRAIGHT EDGE.
9. INSTALL SOLID BLOCKING AT WALL FRAMING BEHIND ALL SURFACE MOUNTED FIXTURES, TRIM AND HANDRAILS.
10. THE LOCATION OF ANY DOOR JAMBS NOT DIMENSIONED SHALL BE 6" FROM ADJACENT PERPENDICULAR WALL.
11. ALL WALL PARTITIONS SHALL EXTEND FLOOR TO STRUCTURE ABOVE, UNLESS OTHERWISE NOTED.

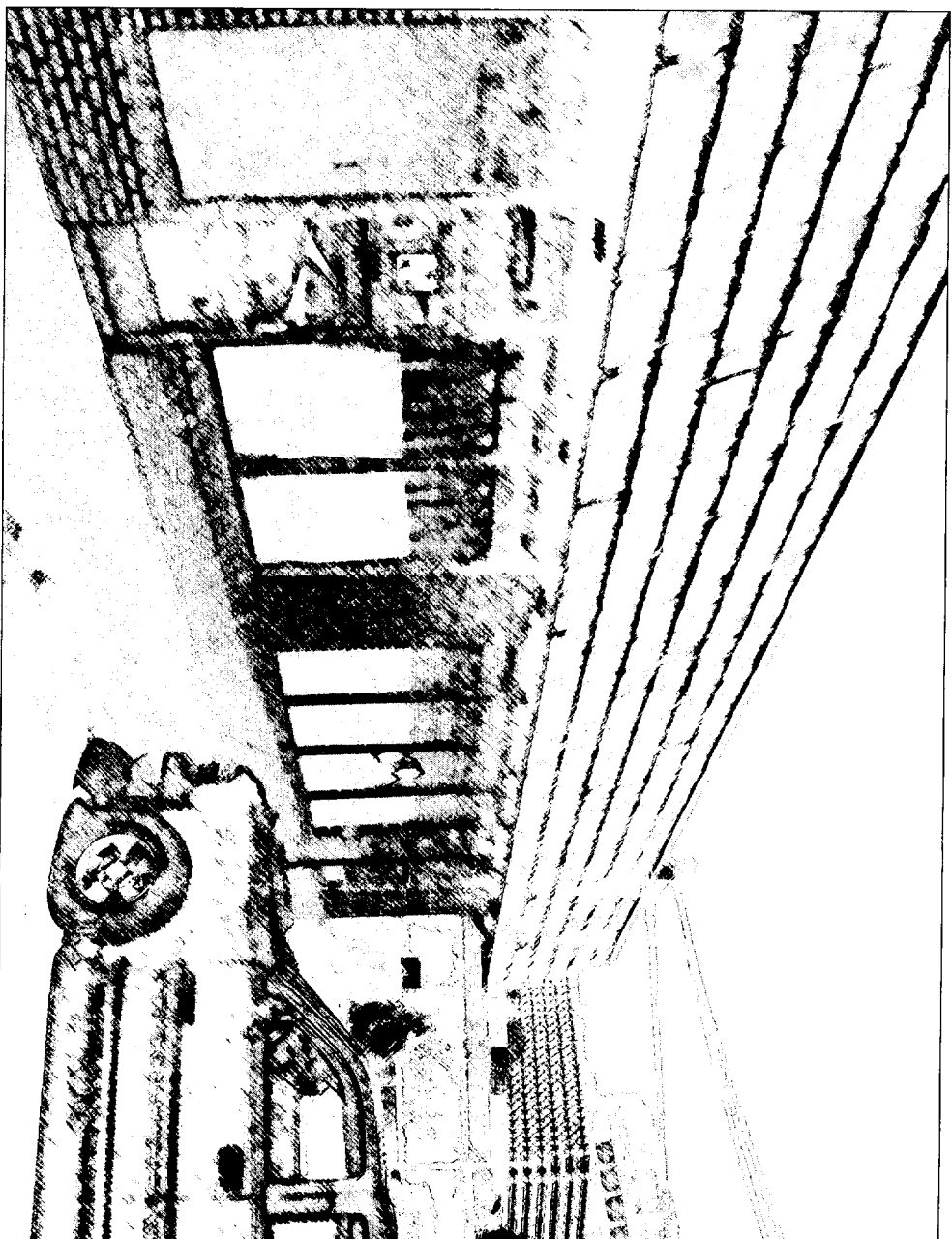
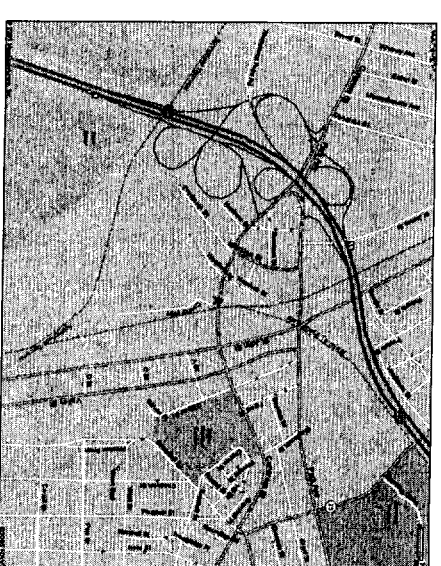


TABLE OF CONTENTS:

- A001- TITLE PAGE
- D101- EXG. FIRST FLOOR PLAN
- A101- FIRST FLOOR PLAN
- A801- ADA ACCESSIBILITY DETAILS

SITE LOCATION:



ISSUED FOR PERMITTING



80 Leighton Road
Falmouth, Maine 04105
Office: (207) 878-1751
Fax: (207) 878-1788
E-Mail: adp@adppengineering.com

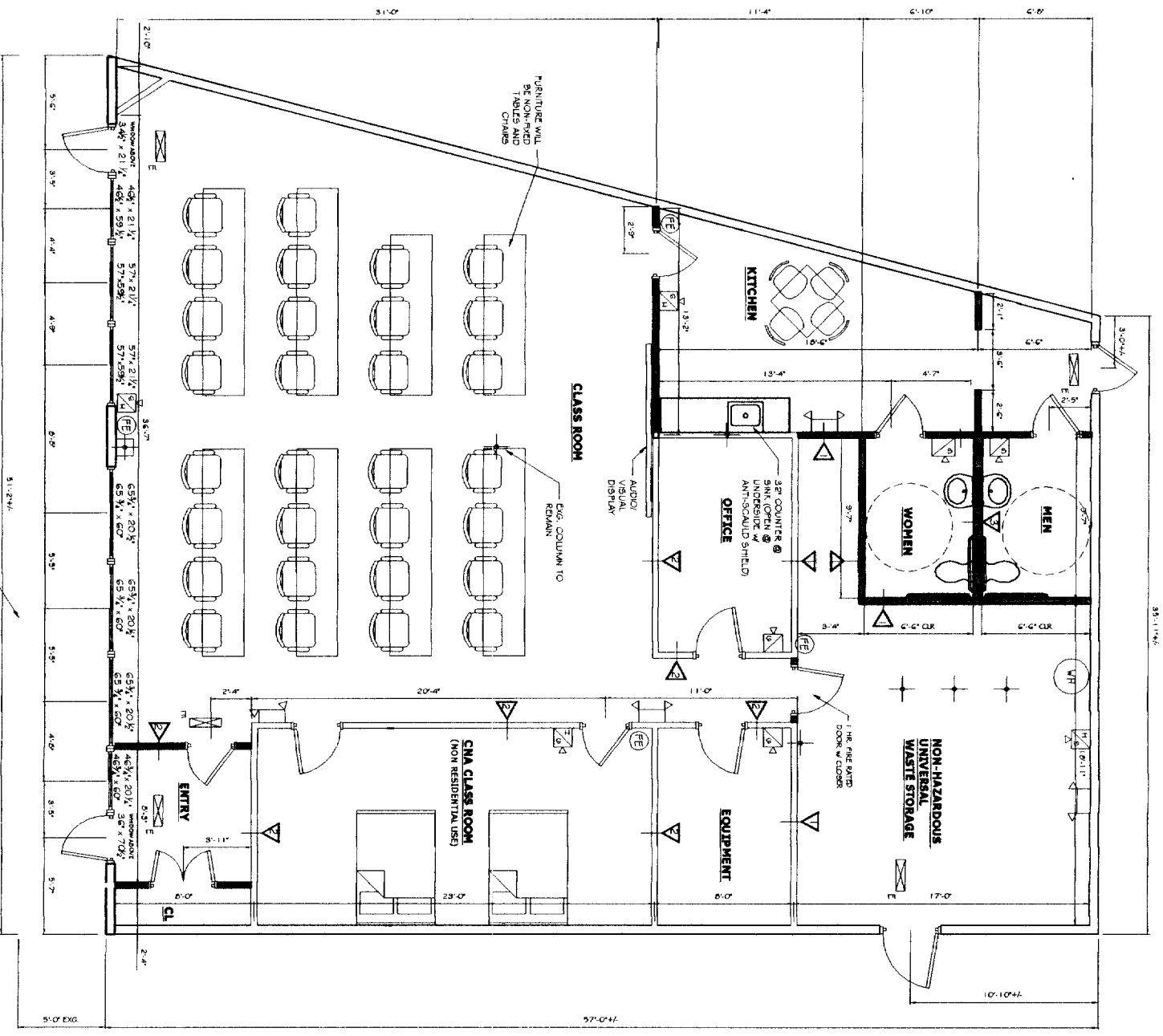
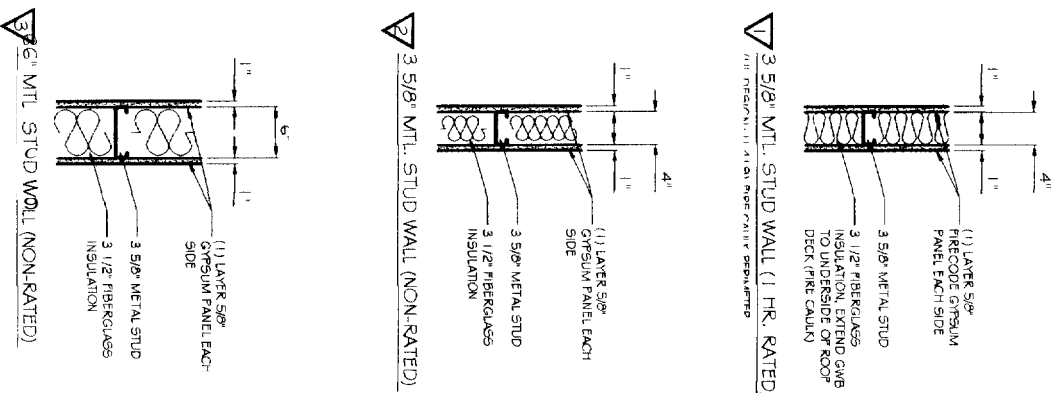
**M A R K
MUELLER
ARCHITECTS**

A.I.A.

100 Commercial Street
Suite 400
Portland, Maine 04101
Phone 207.774.9357
Fax 207.773.8851
www.markmuellearchitects.com
Web: www.markmuellearchitects.com

©2005 MKM
MKM ARCHITECTS

THESE DOCUMENTS, DRAWINGS AND ELECTRONIC FILES ARE THE PROPERTY OF ASSOCIATED DESIGN PARTNERS, INC. AND ARE TO BE USED ONLY FOR THE PROJECT AND OTHER USE OF THIS DOCUMENT WITHOUT WRITTEN CONSENT IS PROHIBITED.



DOG BUBB HEIGHT = 6" NO BAMP HANDRAILS ARE REQ'D
 PROPOSED ADA ACCESSIBLE BAMP WITHIN DESIGNING TRAVELING SPACE
 5'-0\"/>

- NOTES:**
1. ALL NEW PARTITION WALLS TO BE METAL STUDS MATCHING EXG. SIZE AND SPACING WITH 1 LAYER OF 1/2\"/>

*for PKG
 2381 ÷ 334 = 7.13 PKG SPACES
 a 7 req'*

PLAN LEGEND:
 EXISTING WALL TO REMAIN
 NEW WALL CONSTRUCTION

CODE DATA:

- NFPA LEGEND:**
- EMERGENCY LIGHT
 - EXIT LIGHT
 - 110 CANDELLA/15 DB HORIZONTAL UNIT
 - 100 ABC FIRE EXTINGUISHER W/ BRACKET
 - 1 HR. RATED WALL
 - NON-RATED WALL
 - 6\"/>

LIFE SAFETY AND FIRE ALARM SYSTEMS SHALL BE INSTALLED PER NFPA 72.

THE EXISTING BUILDING HAS BEEN RE-EVALUATED AND DETERMINED TO BE A TYPE III BUILDING. THE EXISTING FACILITY DOES NOT MEET THE HEIGHT AND HEIGHT LIMITATIONS. USE GROUP, BUSINESS/ASSEMBLY A-3 CONSTRUCTION TYPE, NO BUILDING HEIGHT EXCEEDS ONE STORY. BUILDING IS TO BE RECONSTRUCTED TO MEET THE HEIGHT AND HEIGHT LIMITATIONS. EQUIPMENT ROOM IS TO BE RECONSTRUCTED TO MEET THE OCCUPANT LOAD CALC. BUILDING BUSINESS-TYPE ASSEMBLY AREAS SHALL MEET NFPA 265 & 701 CLASSROOM (ASSEMBLY) 104/108.4.8 PROFILE

*10/17/05 - dropped off plans
 Plans - 18 PKG SPACES
 shown up front*

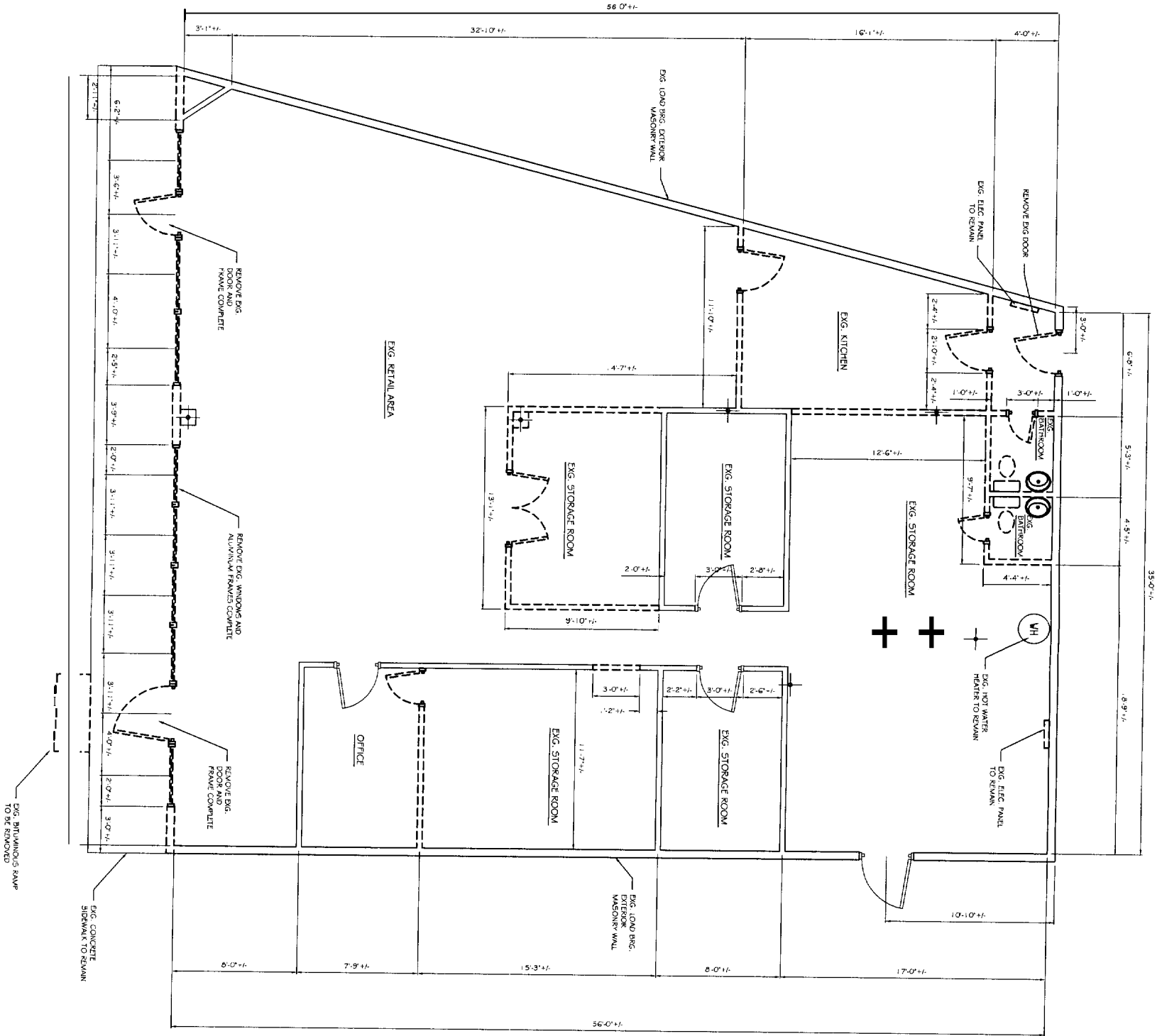
M A R K MUELLER ARCHITECTS A.I.A.
 100 Commercial Street
 Suite 205
 Portland, Maine 04101
 Phone: (207) 878-1751
 Fax: (207) 878-1788
 Email: mmark@markmuller.com
 Web: www.markmuller.com

ASSOCIATED DESIGN PARTNERS INC.
 80 Leighton Road
 Falmouth, Maine 04105
 Office: (207) 878-1751
 Fax: (207) 878-1788
 E-Mail: adp@adpengineering.com

PROJECT: MAINE MED OFFSITE BLDG PORTLAND, MAINE FOR GUS DOUGHTY
SHEET TITLE: PROPOSED FLOOR PLAN ISSUED FOR PERMITTING

REVISIONS	DATE
No.	BY

DATE: 09/01/05
SCALE: 1/2"=1'-0"
DESIGN BY: OTHER
DRAWN BY: AL
FILE # 0528-A101-DC
PROJECT NUMBER: 05229
SHEET NO: A101



- NOTES:**
1. REMOVE EXG. DROP CEILING COMPLETE
 2. ALL EXG. STRUCTURAL MEMBRANES TO REMAIN.
 3. REMOVE ALL EXG. BATH FIXTURES
 4. FLOORING DEMOLITION T.B.D. BY OTHERS
 5. REMOVE EXG. WOOD SOFFIT AND REPLACE LIGHTING AT FRONT CANOPY.

DATE : 09/01/05
 SCALE : 1/4"=1'-0"
 DESIGN BR: NA
 DRAWN BY: AL
 FILE #: 05229-0101.DWG
 PROJECT NUMBER:
05229
 SHEET NO:
D101

No.	BY	REVISIONS DESCRIPTION	DATE

PROJECT: **MAINE MED OFFSITE BLDG**
PORTLAND, MAINE
 FOR: GUS DOUGHTY

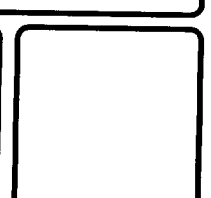
SHEET TITLE:
DEMOLITION PLAN
ISSUED FOR PERMITTING

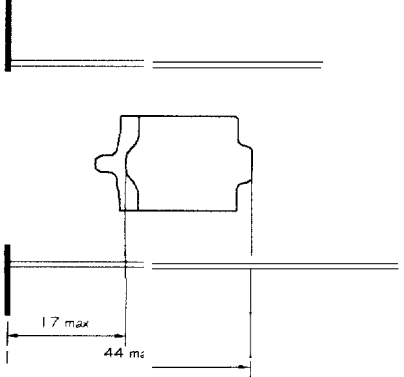
THIS DRAWING, SPECIFICATIONS AND PROJECT INFORMATION IS THE PROPERTY OF ASSOCIATED DESIGN PARTNERS INC. AND IS NOT TO BE REPRODUCED OR TRANSMITTED IN ANY FORM OR BY ANY MEANS, ELECTRONIC OR MECHANICAL, WITHOUT WRITTEN CONSENT OF ASSOCIATED DESIGN PARTNERS INC.

ASSOCIATED DESIGN PARTNERS INC.

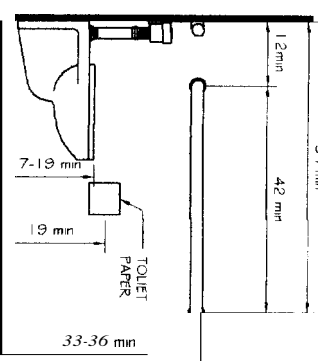
80 Leighton Road
 Falmouth, Maine 04105

Office: (207) 878-1751
 Fax: (207) 878-1788
 E-Mail: adp@adpengineering.com

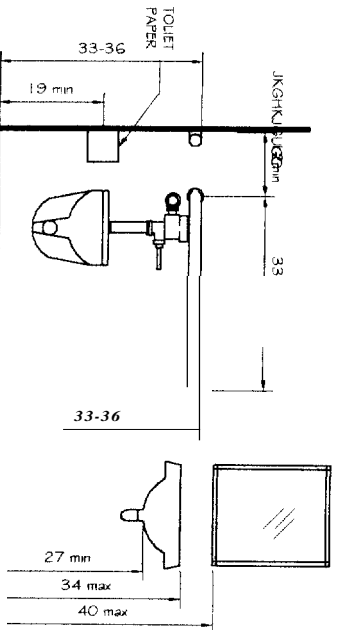




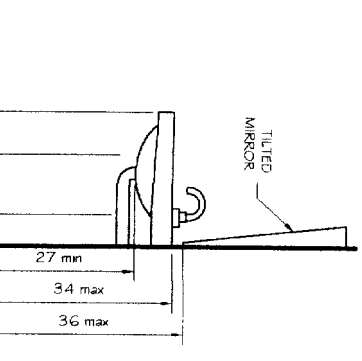
FRONT ELEVATION OF URINAL
SCALE: 1'-0"=3/4"



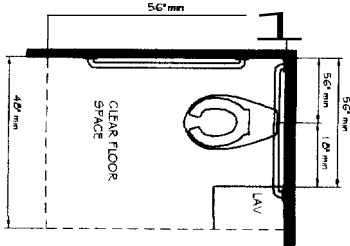
SIDE ELEVATION OF ADA TOILET
SCALE: 1'-0"=3/4"



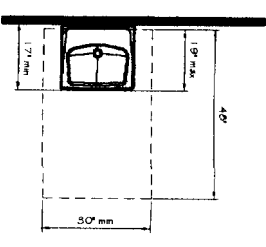
FRONT ELEVATION OF ADA TOILET AND SINK
SCALE: 1'-0"=3/4"



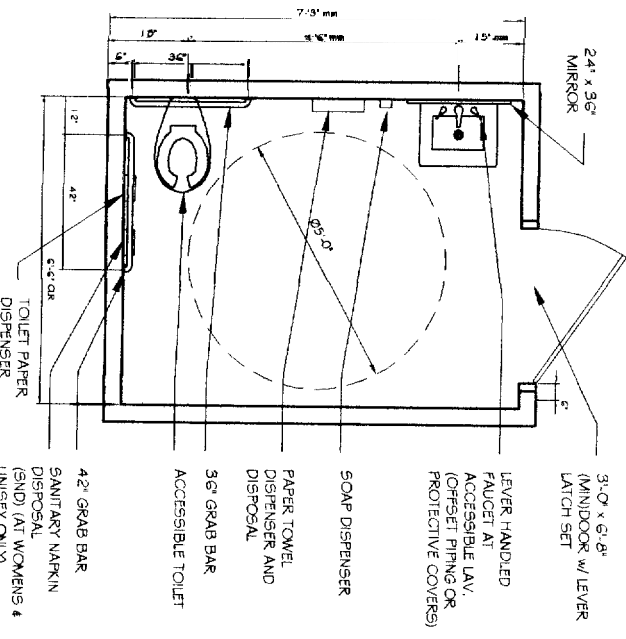
SIDE ELEVATION SINK
SCALE: 1'-0"=3/4"



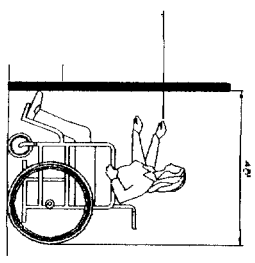
CLR FLOOR SPACE @ WATER CLOSETS
NTS



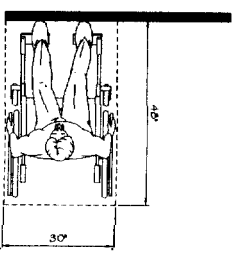
CLEAR FLOOR SPACE @ LAVS
NTS



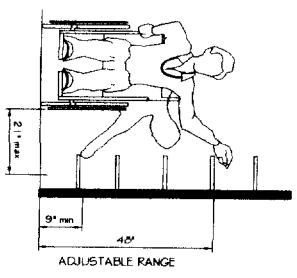
TYPICAL ACCESSORIES
NTS



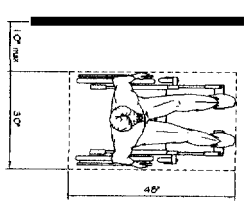
HIGH FORWARD REACH LIMIT
NTS



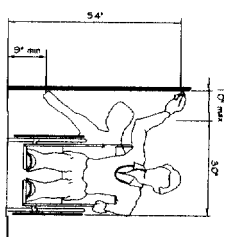
HIGH AND LOW SIDE REACH LIMITS
NTS



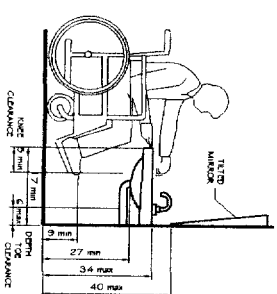
STORAGE SHELVES AND CLOSETS
NTS



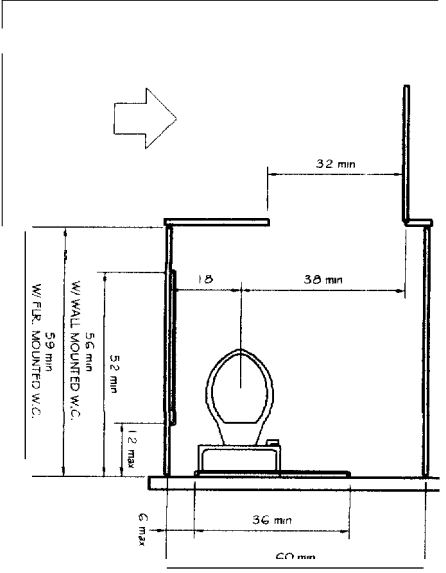
CLEAR FLOOR SPACE PARALLEL APPROACH
NTS



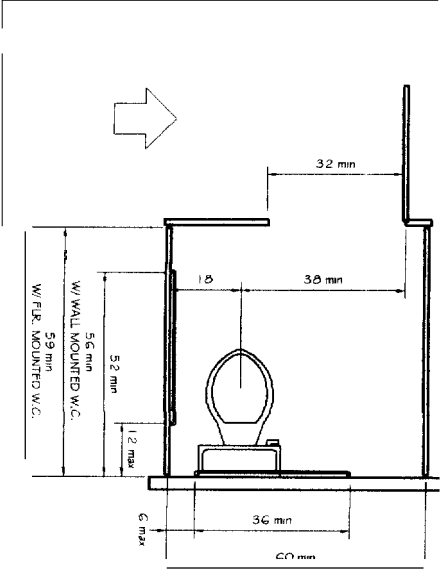
HIGH AND LOW SIDE REACH LIMITS
NTS



LAVATORY CLEARANCES
NTS



STANDARD ADA STALL
NTS



STANDARD STALL
NTS

- ACCESSIBILITY ACCESSORY MOUNTING HEIGHTS**
- GRAB BARS 33"-36"
 - TOILET PAPER HOLDER 19" MIN
 - TOWEL BAR/PAPER TOWEL DISPENSER 48" MAX
 - BUILT IN PAPER TOWEL DISPENSER 48" MAX
 - SOAP DISPENSER AT WALL 48" MAX
 - SANITARY NAPKIN DISPENSER 48" MAX
 - SANITARY NAPKIN DISPOSAL 19" MAX
 - MIRROR (BOTTOM) 40" MAX
 - SHELVES/STORAGE 48" MAX
 - ELECTRICAL SWITCHES/OUTLETS 48" MAX
 - COAT HOOKS/RODS 48" MAX
 - SIGNAGE (TO BRAILLE COMPONENT) 60" MAX

M A R K MUELLER ARCHITECTS A.I.A.

100 University Street
Portland, Maine 04101
Phone 207 774-8257
Fax 207 773-3881
Email: mark@markmullerarchitects.com
Web: www.markmullerarchitects.com

Copyright ©
www.markmullerarchitects.com

ASSOCIATED DESIGN PARTNERS INC.

80 Leighton Road
Falmouth, Maine 04105

Office: (207) 878-1751
Fax: (207) 878-1788
E-Mail: adp@adpengineering.com

**PROJECT: MAINE MED OFFSITE BLDG
PORTLAND, MAINE
FOR: GUS DOUGHTY**

**SHEET TITLE:
ADA ACCESSIBILITY STANDARD DETAILS
ISSUED FOR PERMITTING**

REVISIONS		
No.	BY	DESCRIPTION

DATE: 09/01/05
SCALE: AS SHOWN
DESIGN BY: OTHER
DRAWN BY: AL
FILE # 02229-ARB1.DWG
PROJECT NUMBER: 052229
SHEET NO: A801