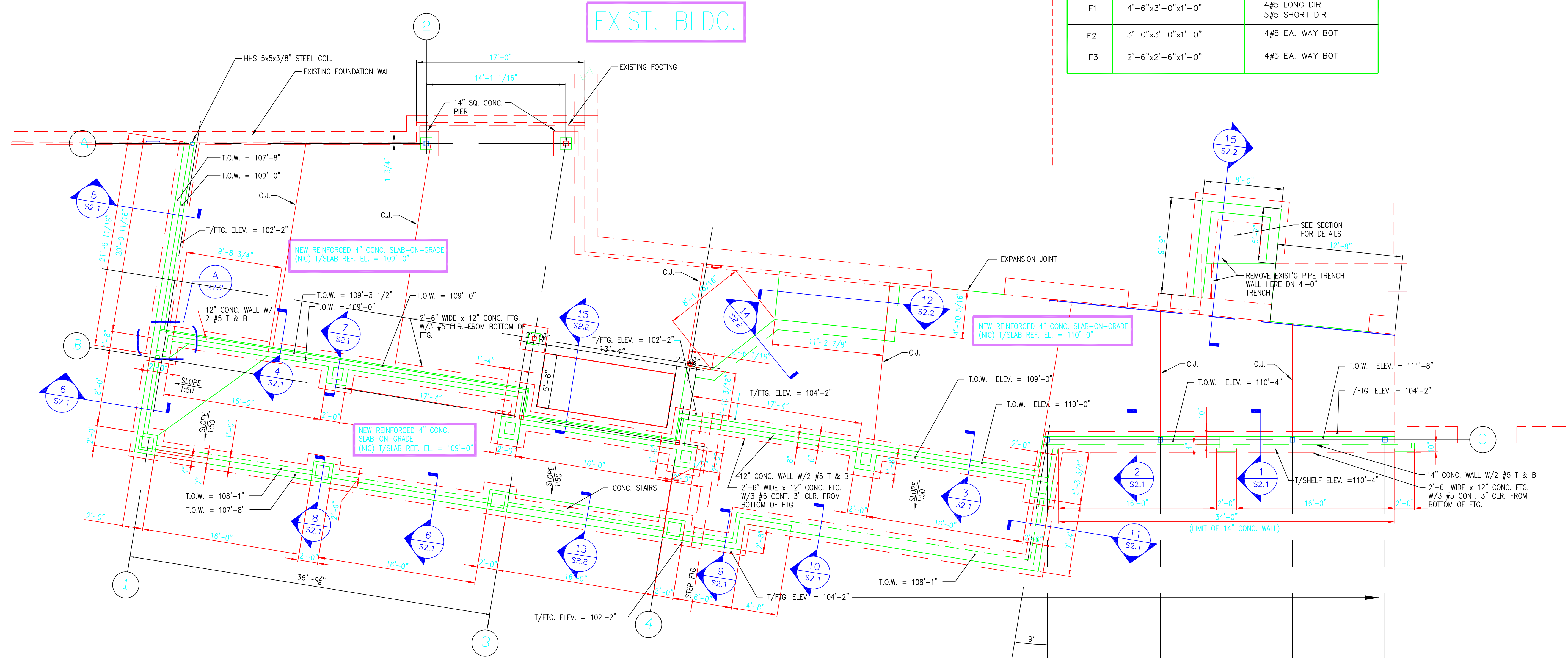


FOOTING SCHEDULE		
TYPE	SIZE	BOT. REINF.
F1	4'-6"x3'-0"x1'-0"	4#5 LONG DIR 5#5 SHORT DIR
F2	3'-0"x3'-0"x1'-0"	4#5 EA. WAY BOT
F3	2'-6"x2'-6"x1'-0"	4#5 EA. WAY BOT



EXIST/ NEW FOUNDATION PLAN

3/16" = 1'-0"

- NOTES:
1. TOP OF SLAB-ON-GRADE REFERENCE EL = 109'-0".
 2. TOP OF CONC WALL ELEV = 109'-0" (TYP UNO).
 3. TOP OF BRICK SHELF ELEV = VARIES (SEE PLAN).
 4. TOP OF COLUMN PIER ELEV = 109'-6" (TYP UNO).
 5. TOP OF EXTERIOR STRIP FOOTING EL = 105'-2" (TYP UNO).
 6. TOP OF EXIST CONC WALL EL = 109'-0" (TYP UNO).
 7. FOUNDATION WALLS SHALL BE 12" THICK (TYP UNO).
 8. F1, F2 - INDICATES FTG TYPE. (SEE SCHEDULE DWG S1.1).
 9. P1, P2 - INDICATES PIER TYPES. (SEE DWG S2.2).
 10. C.J. - INDICATES CONTROL JOINT (TYP).

NOT FOR CONSTRUCTION