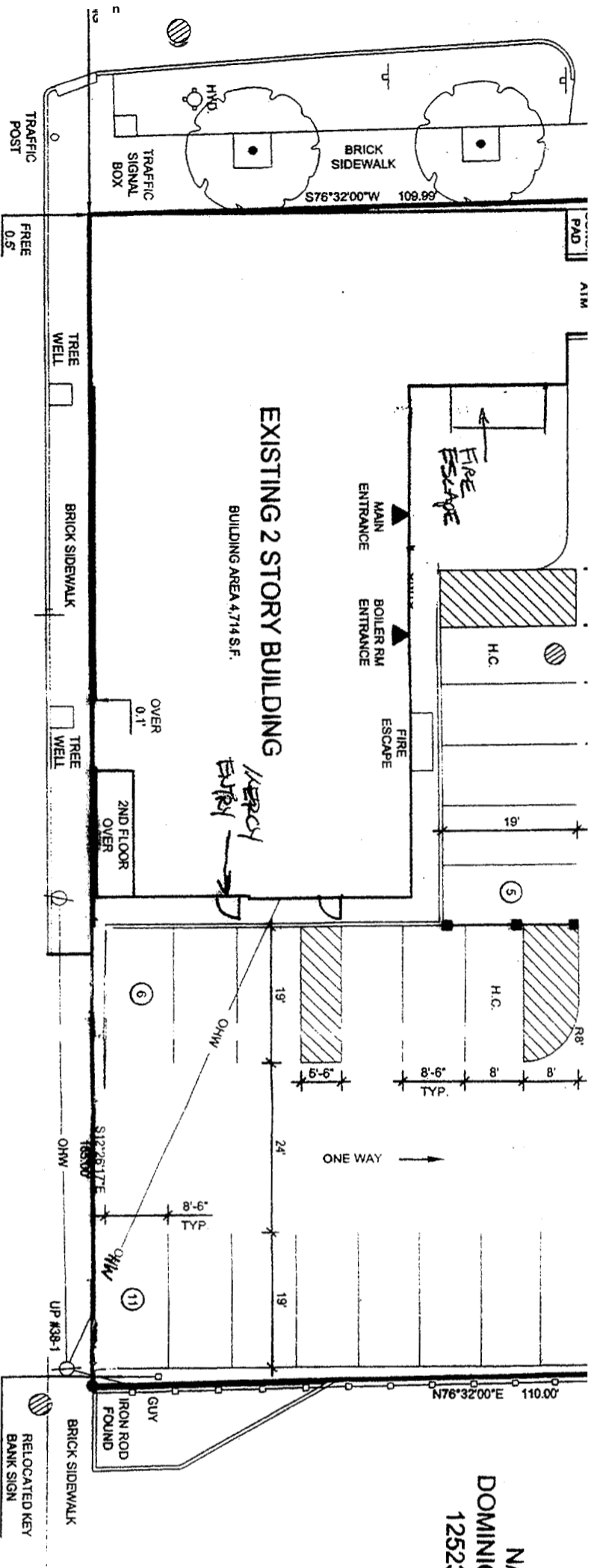


1100 ft Elevation
 4/10/06





N/F
DOMINIC REALI
12523/331

GENERAL NOTES

- o 1ST FLOOR TENANT HAS 15 DESIGNATED PARKING SPACES
- o 2ND FLOOR TENANT HAS 15 DESIGNATED PARKING SPACES
- o AREA HAS 1 SPACE

959 Congress

Date:

APRIL 27, 2006

Revisions:

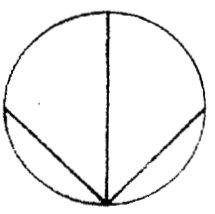
Reproduction or reuse of this document without the expressed written consent of Mitchell & Associates is prohibited.

Title:
SITE PLAN

Scale: 1"=20'



North:



Sheet No.:

1

Prepared For:

KEY, LLC
50 Portland Pier, Suite 400
Portland, Maine 04101

Prepared By:

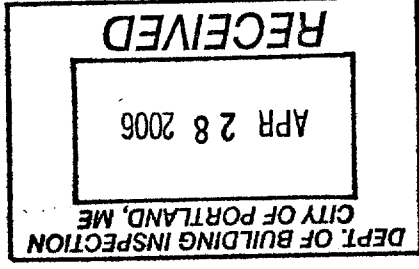
MITCHELL & ASSOCIATES
Landscape Architects
The Staples School
70 Center Street
Portland, Maine 04101
Tel: (207) 774-4427

E BUILDING

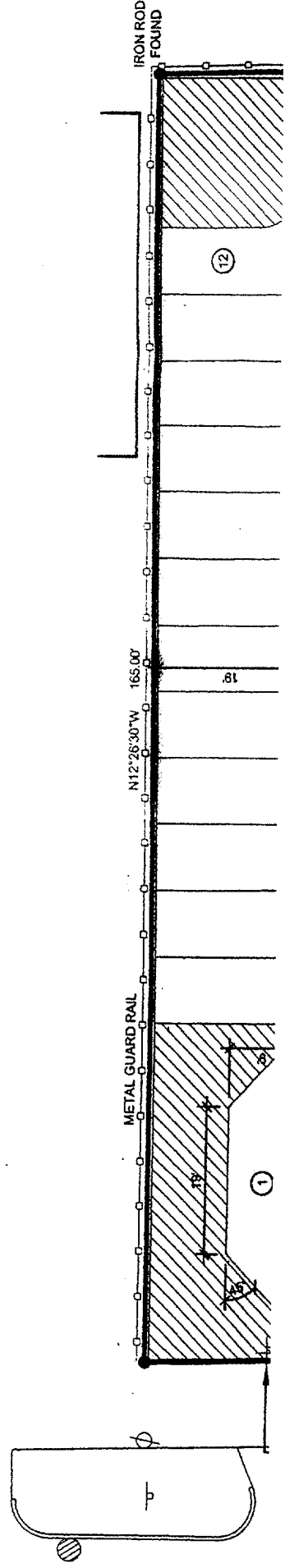
Portland, Maine

GENERAL NOTES

1. BOUNDARY LINE AND EXISTING CONDITIONS INFORMATION BASED ON ALTA/ACSM LAND TITLE SURVEY PREPARED BY OWEN HASKELL, INC., DATED OCTOBER 1, 1999.



N/F
CONSUELO S. LOGAN
4000/215
PLAN REFERENCE 2



ONE WAY TRAFFIC